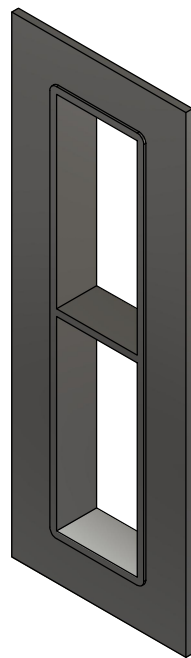


TYPE	ROWS [QTY]	H1 [mm]	H2 FOR +SINGLE FRAMES [mm]	H2 FOR +COMB. FRAMES [mm]
SF 2+2xN	2	101	352	362
SF 4+4xN	2	159.5	469	479
SF 6+6xN	2	218	586	596
SF 8+8xN	2	278	706	716
SF 2+2+2xN	3	101	463	483
SF 4+4+4xN	3	159.5	638.5	658.5
SF 6+6+6xN	3	218	814	834
SF 8+8+8xN	3	278	994	1014
SF 2+2+2+2xN	4	101	574	604
SF 4+4+4+4xN	4	159.5	808	838
SF 6+6+6+6xN	4	218	1042	1072
SF 8+8+8+8xN	4	278	1282	1312

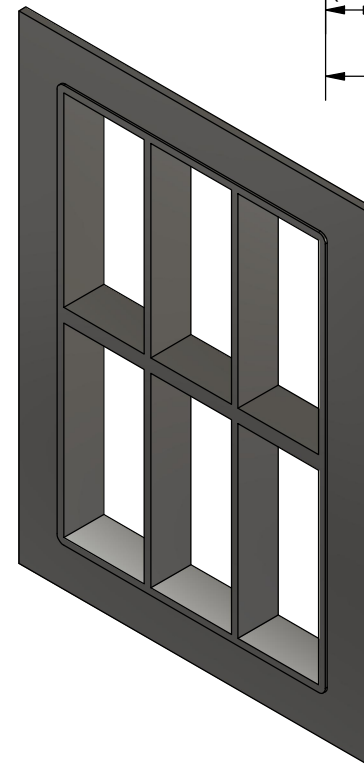
N [QTY]	TYPE	W [mm]	T [mm]
x1	+SINGLE	260.5	10
x2	+COMB.	391	20
x3	+COMB.	521.5	20
x4	+COMB.	652	20
x5	+COMB.	782.5	20
x6	+COMB.	913	20
x7	+COMB.	1043.5	20
x8	+COMB.	1174	20
x9	+COMB.	1304.5	20
x10	+COMB.	1435	20

N: FRAME OPENINGS/ROW

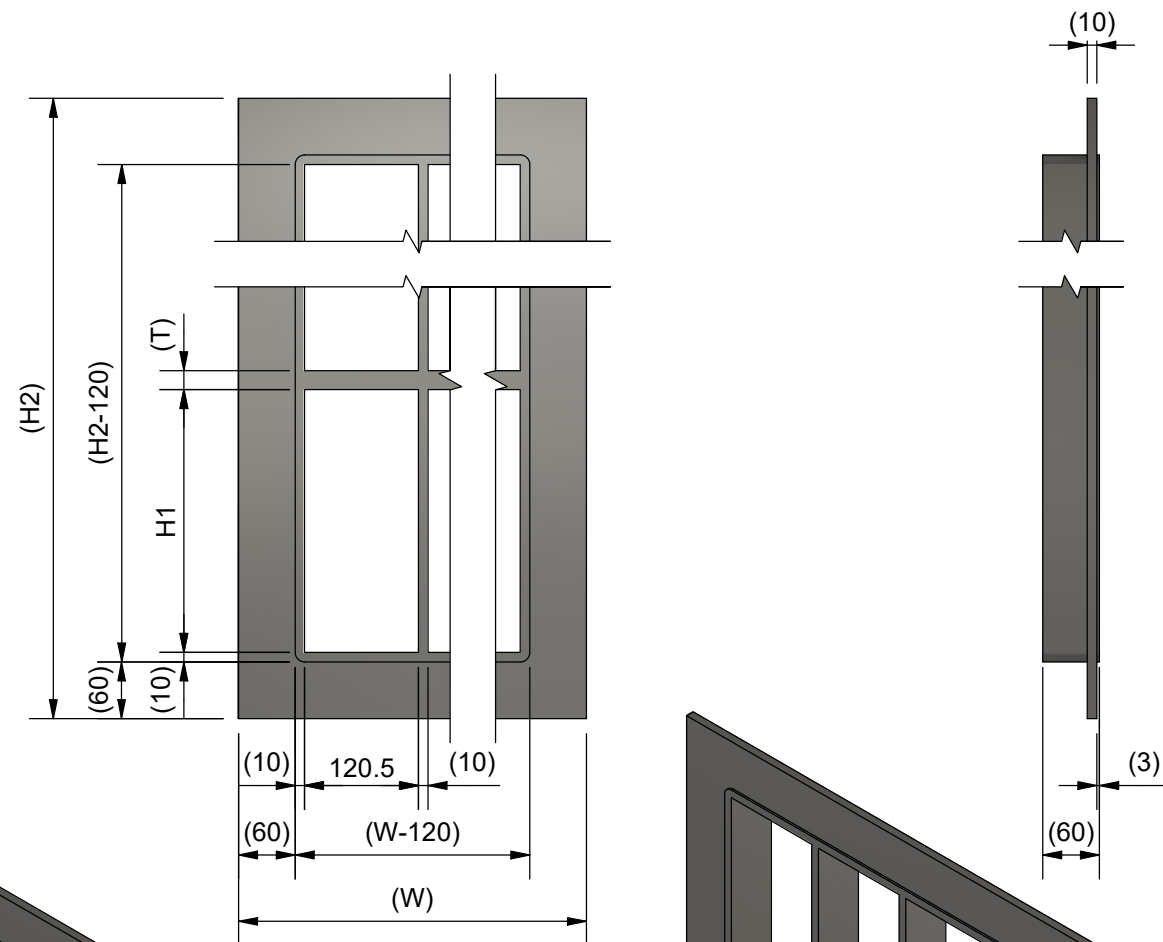
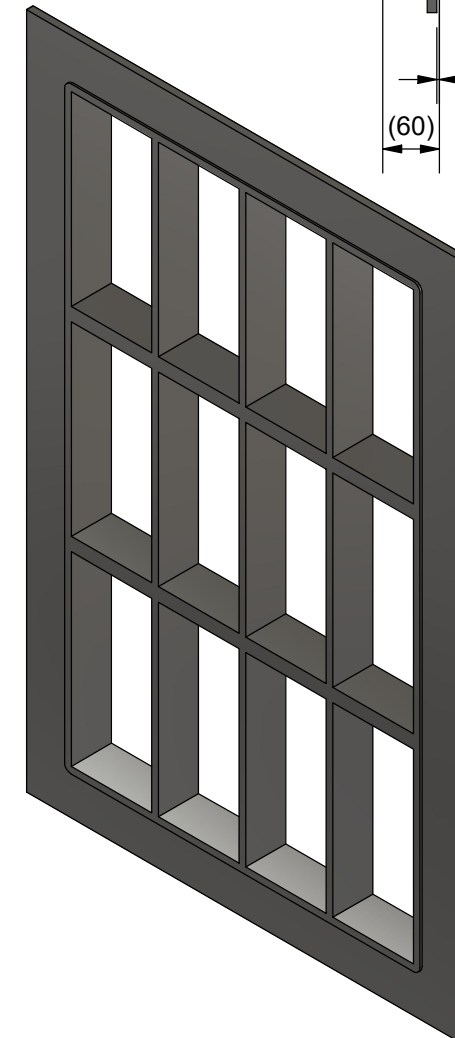
SF 8+8x1
N=1




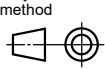
SF 8+8x3
N=3



SF 8+8+8x4
N=4



E	LAYOUT CHANGED	2024-09-20	se-marfre
Rev	Type of revision	Date	Sign

General tolerances used for manufacturing shown in document DOC-002180		Designed by/date se-luckri 2003-11-03	Latest save date 2024-10-08	Format A3	Scale	Sheet no 1 / 1	TotWeight
 www.roxtec.com		Title SF FRAME +SINGLE AND +COMBINATION FRAME				Projection method 	
		Restricted due to Information drawing			Drawing number S1005533		Rev E