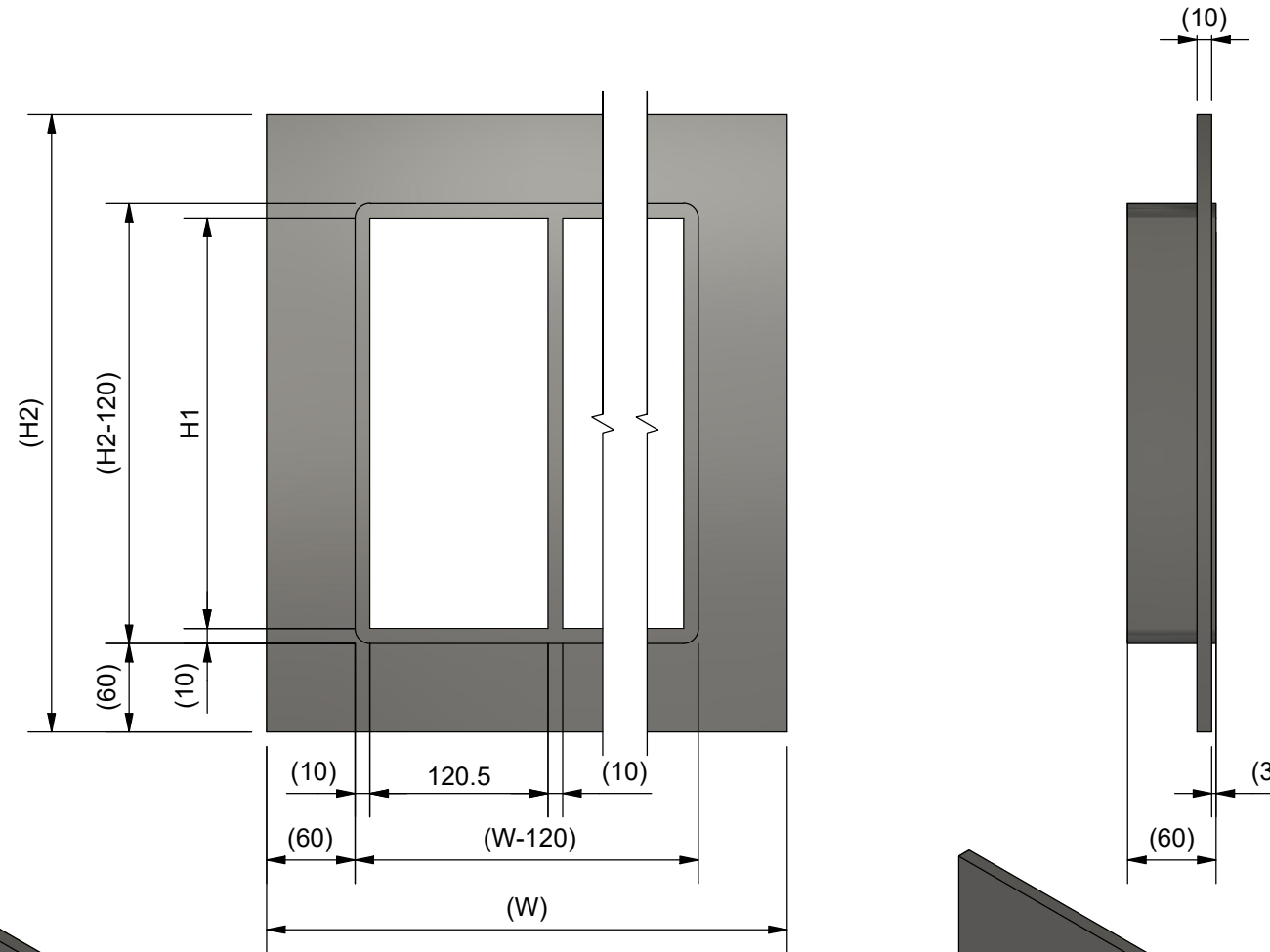


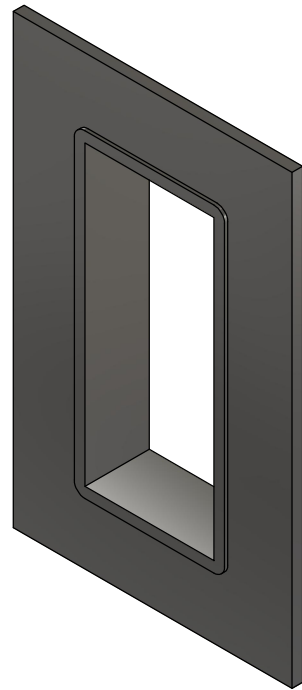
TYPE	H1 [mm]	H2 [mm]
SF 2xN	101	241
SF 4xN	159.5	299.5
SF 6xN	218	358
SF 8xN	278	418

N	W [mm]
x1	260.5
x2	391
x3	521.5
x4	652
x5	782.5
x6	913
x7	1043.5
x8	1174
x9	1304.5
x10	1435

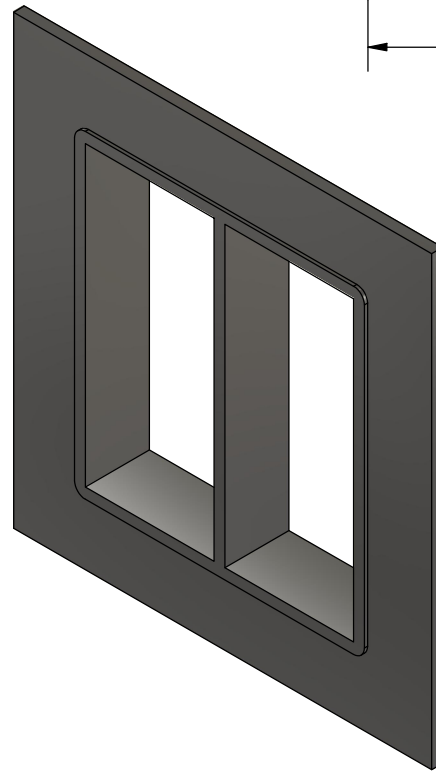
N: NUMBER OF FRAME OPENINGS



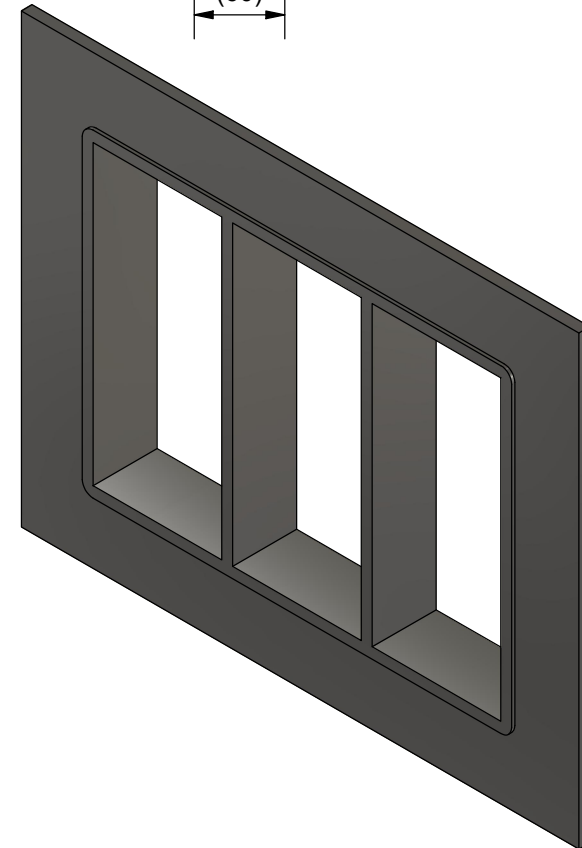
SF 8x1
N=1




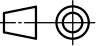
SF 8x2
N=2



SF 8x3
N=3



Rev	Type of revision	Date	Sign
H	DEFINITION OF N CLARIFIED	2024-11-07	se-marfre

General tolerances used for manufacturing shown in document DOC-002180		Designed by/date se-luckri 2003-11-03	Latest save date 2024-11-07	Format A3	Scale	Sheet no 1 / 1	TotWeight
 www.roxtec.com		Title SF FRAME SINGLE AND COMBINATION FRAME				Projection method 	
		Restricted due to Information drawing			Drawing number S1005530		Rev H