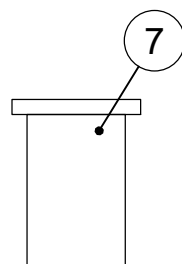
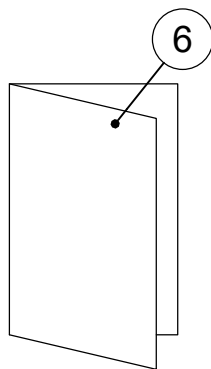
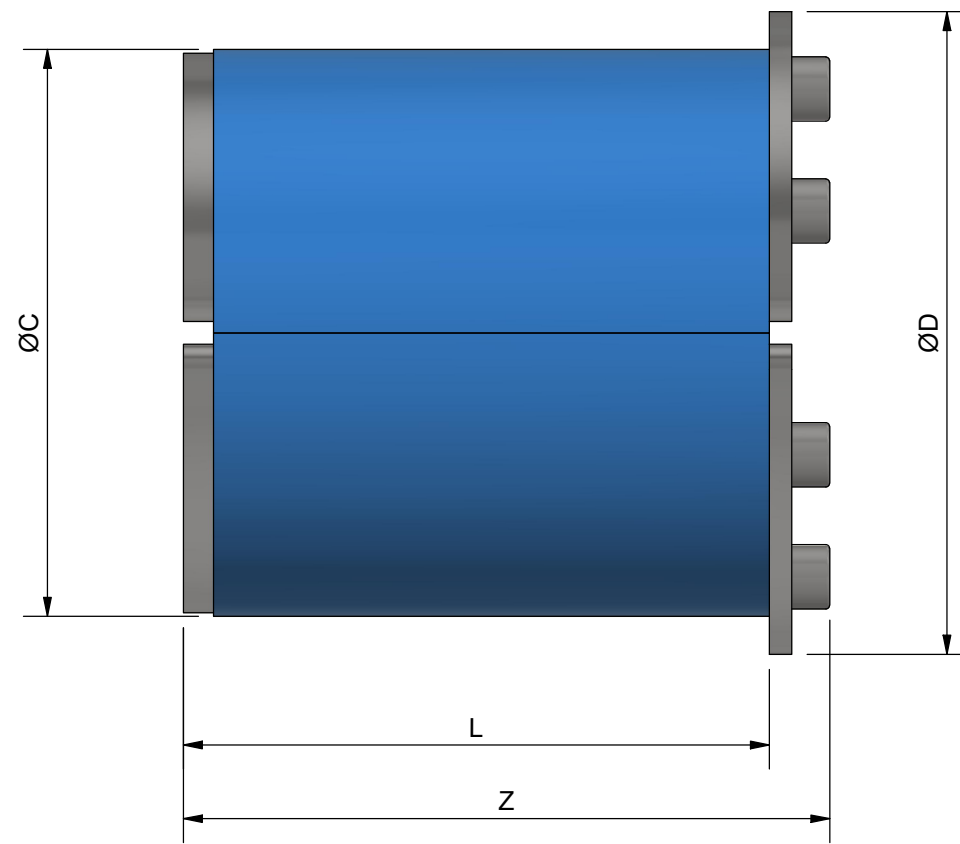
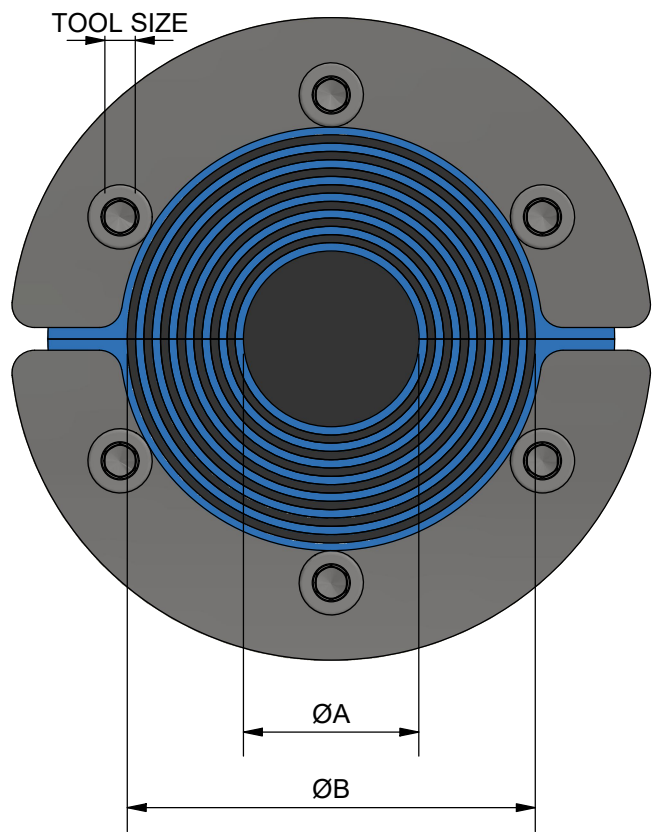
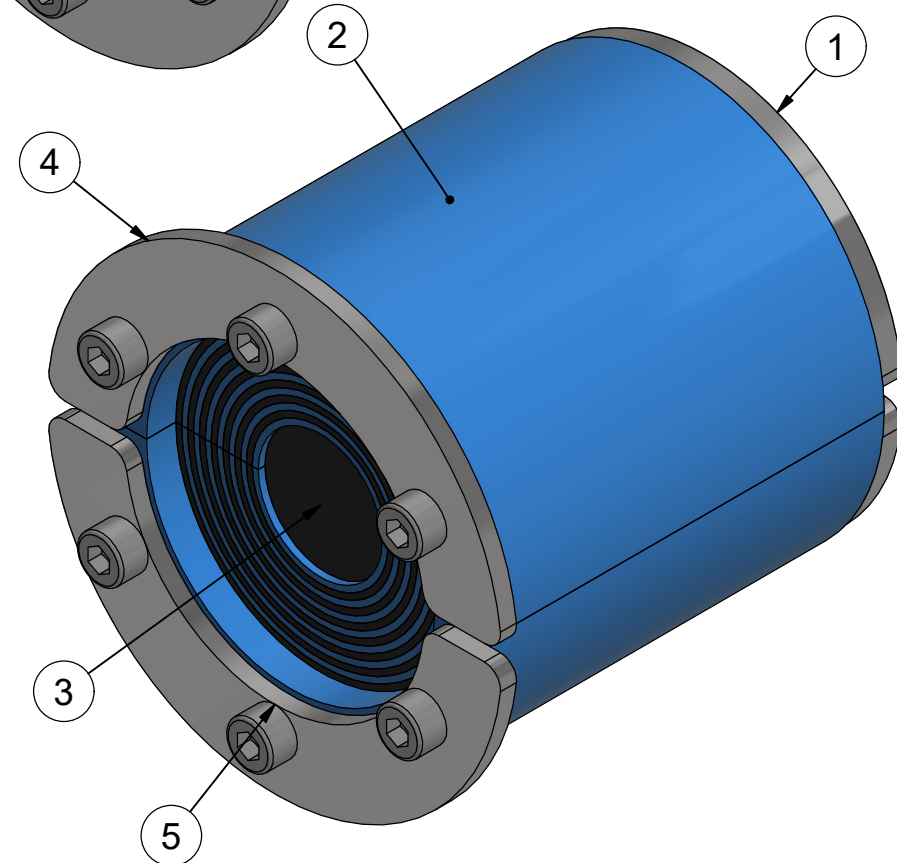
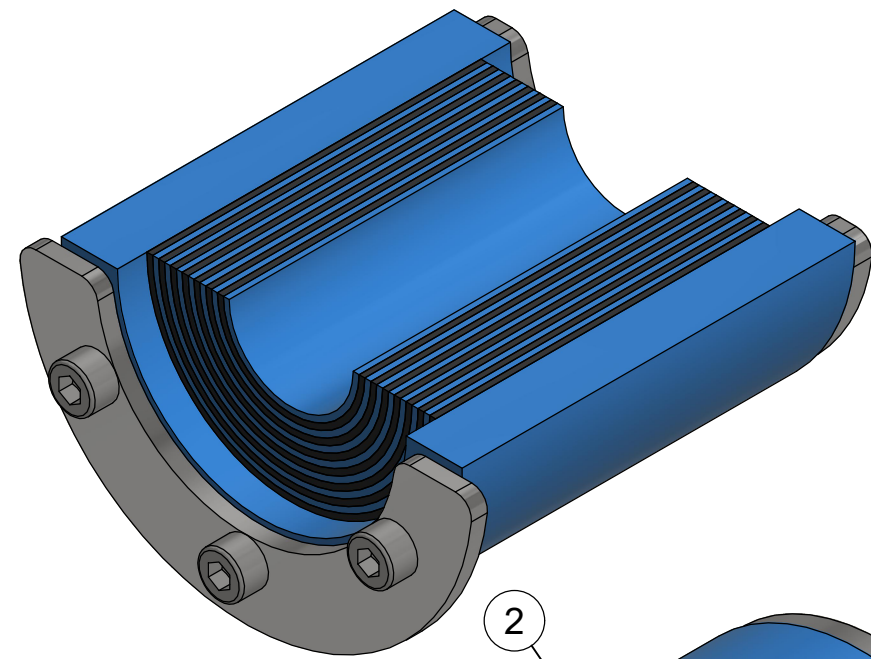


SEAL	A	B	C	D	L	Z	TOOL SIZE	Q
RS 25	3,6	12	25	32	39	43	2,5	4
RS 31	4	17	31	37	39	43	2,5	4
RS 43	4	23	43	53	78	85	4	4
RS 50	8	30	50	60	78	85	4	4
RS 68	26	48	68	78	78	85	4	4
RS 75	24	54	75	85	78	85	4	6
RS 100*	48	70	100	110	78	86	4	6
RS 125*	66	98	125	145	79	88	5	6
RS 150 WOC	93	119	150	170	79	88	5	8
RS 175 WOC	119	145	175	195	80	88	5	8
RS 200 WOC	138	170	200	220	80	88	5	8

* ALSO AVAILABLE IN WOC VERSION DELIVERED WITHOUT CORE.



ITEM	QTY	Designation	Specification	Weight
7	1	LUBRICANT		
6	1	INSTALLATION INSTRUCTION		
5	Q	SCREW	ISO 4762 A4	
4	2	FRONT FITTING	ACID PROOF STAINLESS STEEL	
3	1	CORE	ROXYLON	
2	2	RUBBER FRAME	ROXYLON	
1	2	REAR FITTING	ACID PROOF STAINLESS STEEL	

ITEM		QTY	Designation	Specification				Weight				
General tolerances used for manufacturing shown in document DOC-002180		Designed by/date	se-joahel 2003-10-30	Latest save date	2024-01-18	Format	A3	Scale	Sheet no	1 / 1	TotWeight	0,6 kg
Title		RS SEALS RS 25-200		Projection method				Drawing number		S1005509	Rev	G
www.roxtec.com		Information drawing		Restricted due to								

Rev	Type of revision	Date	Sign
G	LAYOUT CHANGED	2024-01-17	se-jenboh