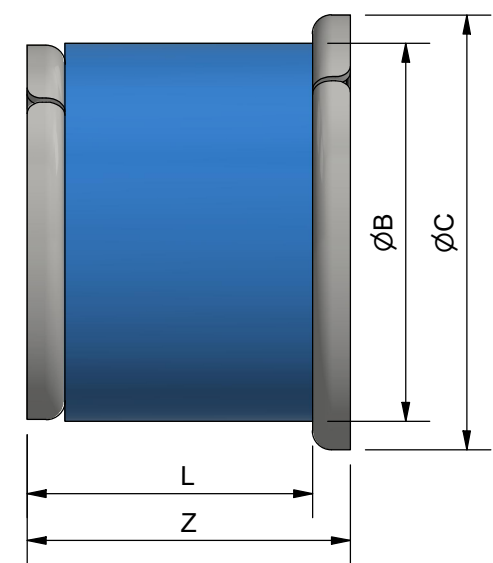
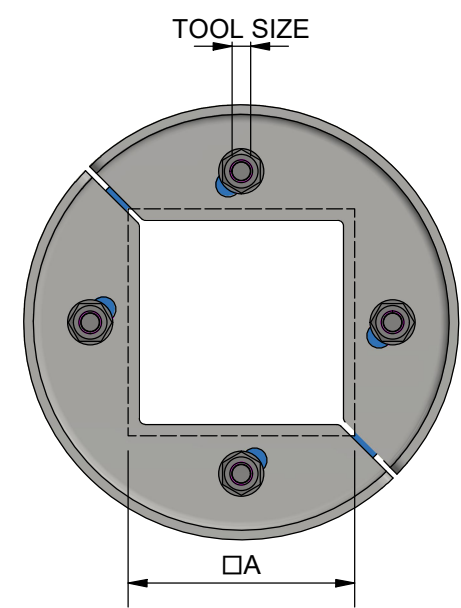
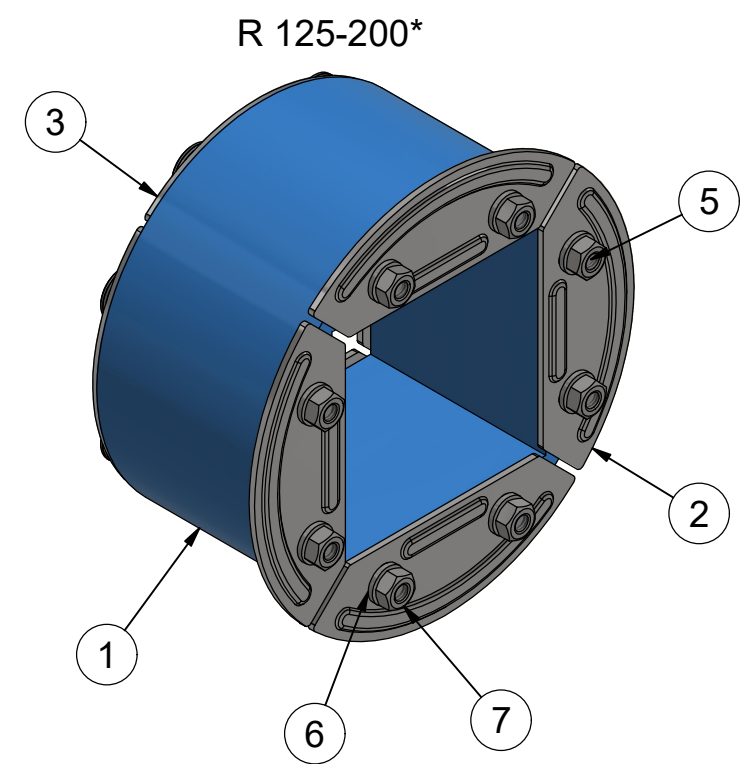
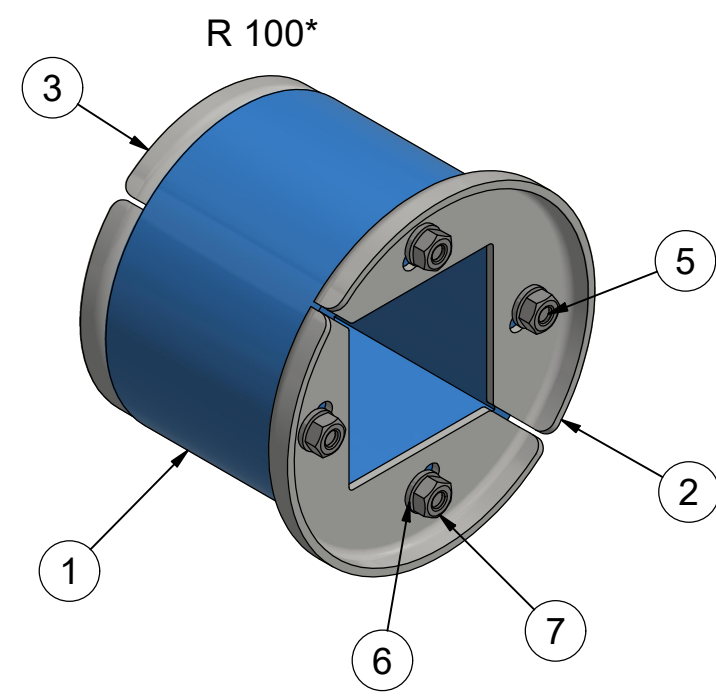
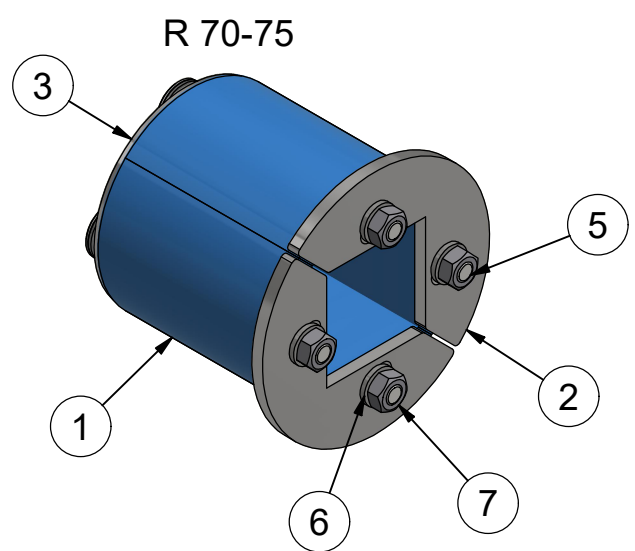
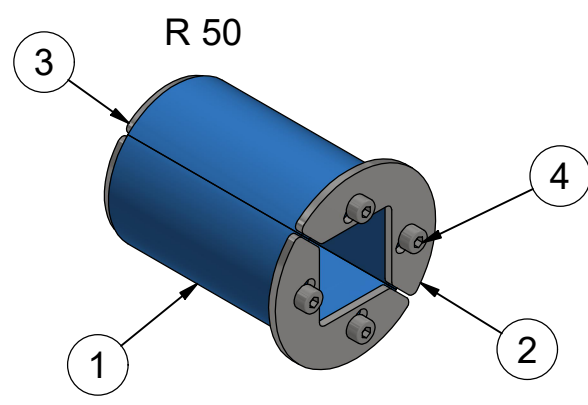
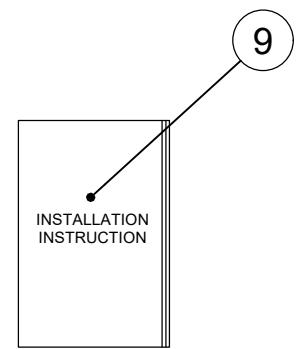
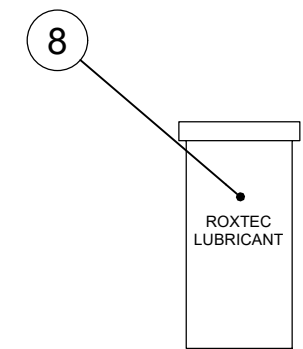


TYPE	A [mm]	B [mm]	C [mm]	L [mm]	Z [mm]	TOOL SIZE [mm]	S [QTY]	N & W [QTY]
R 50	30	50	60	67.5	75	3	4	-
R 70	40	70	85	71	85	10	4	4
R 75	40	75	85	71	85	10	4	4
R 100	60	100	115	75	85	10	4	4
R 125	80	125	142	71	85	10	8	8
R 127	80	127	142	71	85	10	8	8
R 150	90	150	165	71	85	13	8	8
R 200	120	200	215	71	85	13	8	8



**\*ALSO AVAILABLE IN GALVANIZED MILD STEEL**

ITEM	QTY	Designation	Specification	Weight
9	1	INSTALLATION INSTRUCTION		
8	1	LUBRICANT		
7	N	NUT	ISO 4032 A4/FZB	
6	W	WASHER	ISO 7089 A4/FZB	
5	S	SCREW	ISO 4014 A4/FZB	
4	S	SCREW	ISO 4762 A4	
3	-	REAR FITTING	ACID PROOF STAINLESS STEEL	
2	-	FRONT FITTING	ACID PROOF STAINLESS STEEL	
1	-	RUBBER FRAME	ROXYLON	

General tolerances used for manufacturing shown in document DOC-002180		Designed by/date se-joahel 2003-10-30	Latest save date 2024-06-24	Format A3	Scale	Sheet no 1 / 1	TotWeight
 <b>Roxtec</b> www.roxtec.com		Title R FRAMES R 50-200		Projection method 		Rev	
		Restricted due to Information drawing		Drawing number S1005506		H	

H	LAYOUT CHANGE	2024-06-14	se-jenboh
Rev	Type of revision	Date	Sign