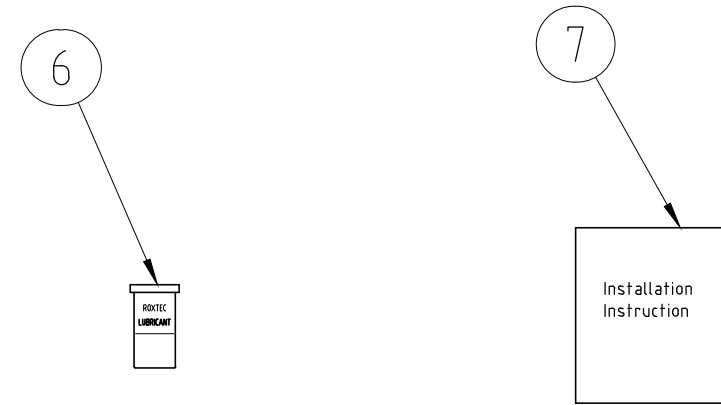
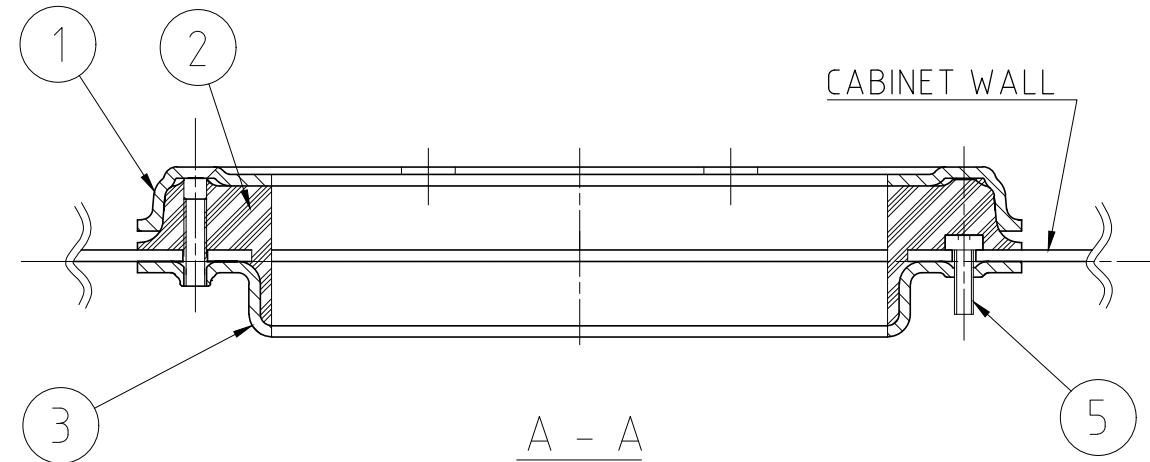
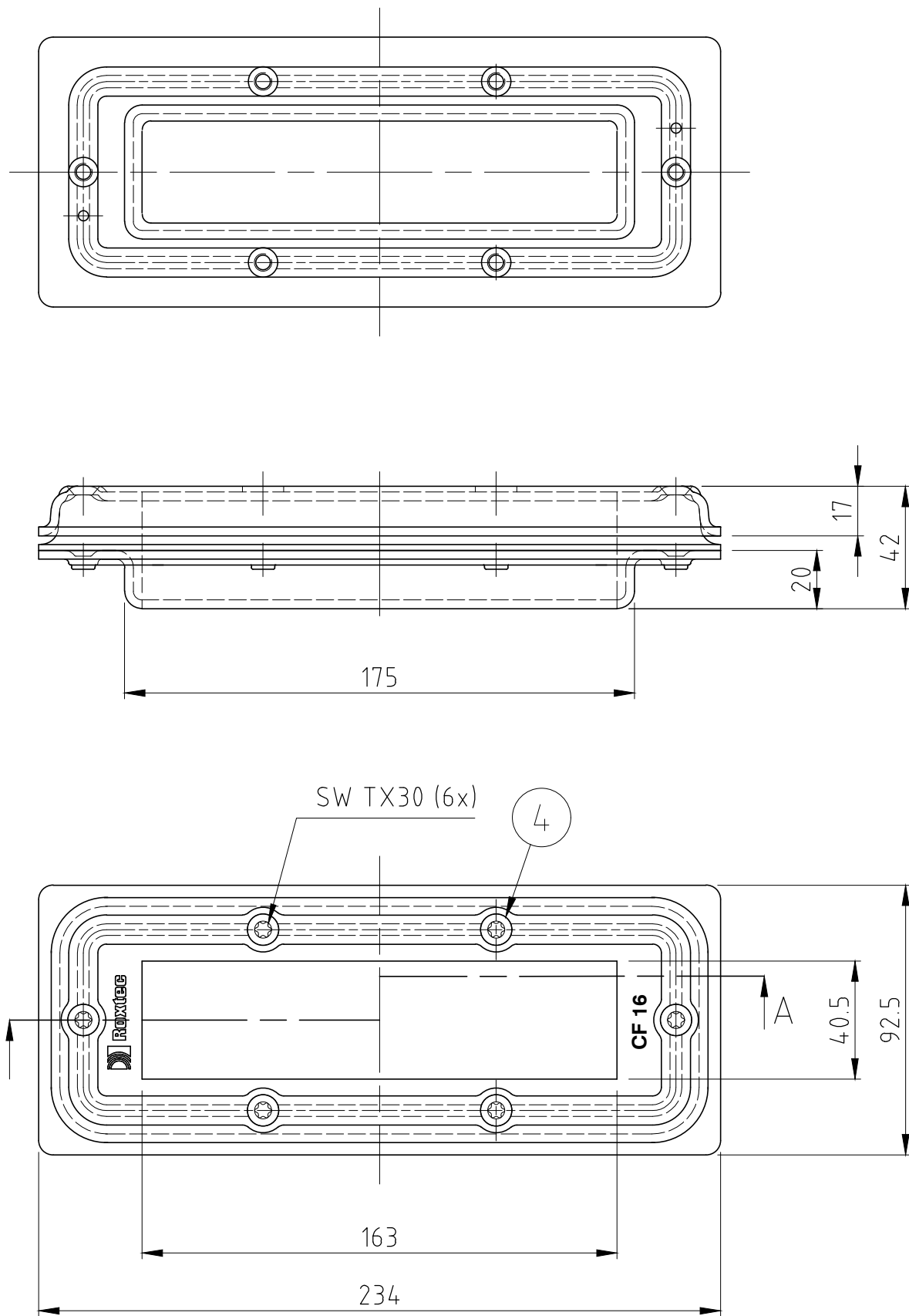



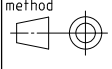
洛克赛克保留所有权利。未经授权严禁复制，使用以及向第三方泄漏。

All rights reserved. Unauthorized reproduction, use or disclosure to third parties is strictly forbidden.

Rev 3.0



Item	Qty	Designation	Specification	Net Weight
7	1	INSTALLATION INSTRUCTION		-
6	1	LUBRICANT		-
5	2	FASTENERS	SCREW M5 A4	-
4	6	FASTENERS	SCREW M6 A4	-
3	1	BACK PIECE	AISI 304	-
2	1	COMPRESSION RUBBER	-	-
1	1	FRONT PIECE	AISI 304	-

General tolerances used for manufacturing shown in document DOC-002180		Designed by	Created Date	Latest save date	Format	Scale	Sheet no	Net Weight
		se-krihan	2003-04-29	2024-01-22	A3	1:2		-
 www.roxtec.com		Title		Projection method				
		CF 16 AISI 304						
		Restricted due to			Drawing number		Rev	
		Information drawing			S1004810		F	

Rev	Type of revision	Date	Sign
F		2024-01-22	se-parham

Information drawings show general design and nominal dimensions if not else stated