

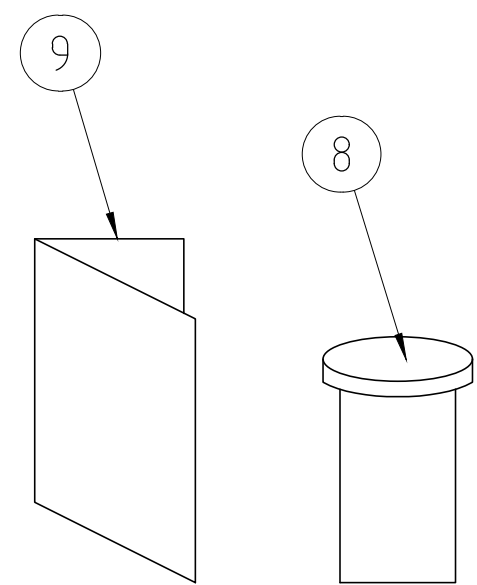
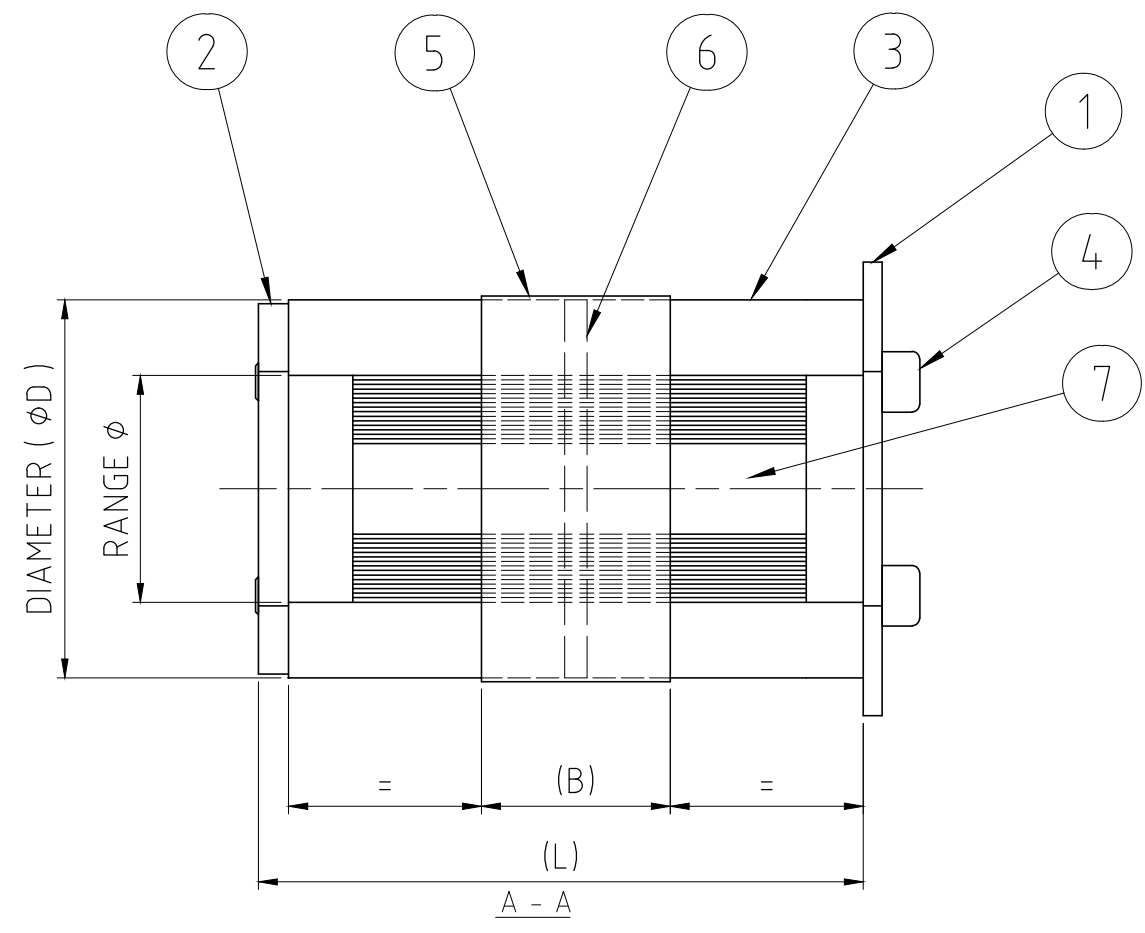
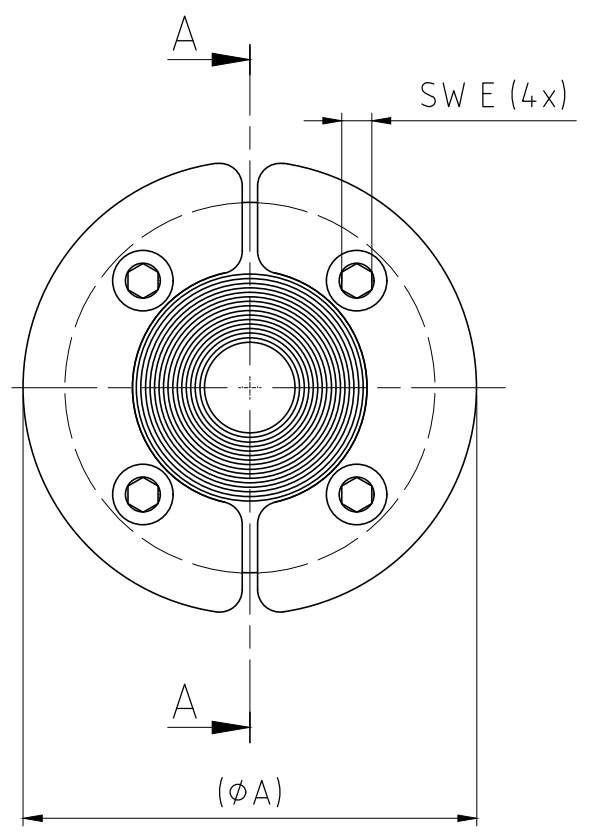
烙克囊克保留所有权利。未经授权严禁复制，使用以及向第三方泄漏。

All rights reserved. Unauthorized reproduction, use or disclosure to third parties is strictly forbidden.

Rev 2.0

RS ES SEALS							
SIZE	A	B	D	E	F	RANGE $\phi$	L
RS 25 ES	32	15	25	2,5	1	0+3.6-12	41,5
RS 31 ES	37	15	31	2,5	1	0+4-17	41,5
RS 43 ES	53	25	43	4	1	0+4-23	80
RS 50 ES	60	25	50	4	1	0+8-30	80
RS 68 ES	78	25	68	4	1	0+26-48	80

RS ES SEALS (WITHOUT CORE)							
SIZE	A	B	D	E	F	RANGE $\phi$	L
RS 68 ES WOC	78	25	68	4	0	26-48	80



NOTE:  
The range of the Roxtec Seal indicates the smallest possible diameter of the dismantled cable screen to the largest possible diameter of the cable mantle.

9	1	INSTALLATION INSTRUCTION		
8	1	ROXTEC LUBRICANT		
7	F	CORE	ROXYLON	
6	2	CONDUCTIVE RUBBER	EMI SHIELD	
5	2	CONDUCTIVE TAPE	TIN PLATED COPPER	
4	4	SCREW	MC6S A4	
3	2	RUBBER FRAME	ROXYLON	
2	2	REAR FITTING	ACID PROOF STAINLESS STEEL	
1	2	FRONT FITTING	ACID PROOF STAINLESS STEEL	

Rev	Type of revision	Date	Sign
I		2024-01-22	se-parham

Item	Qty	Designation	Specification	Net Weight
General tolerances used for manufacturing shown in document DOC-002180		Designed by	Created Date	Latest save date
		se-tomagr	1999-02-16	2024-01-22
		Title	Format	Scale
		RS ES SEALS	A3	1:1
		RS 25-68 ES	Sheet no	
		Restricted due to	Drawing number	Proj Weight
		Information drawing	S1000676	-
			Rev	
			I	

Information drawings show general design and nominal dimensions if not else stated