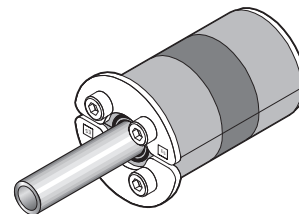


# Installation instructions

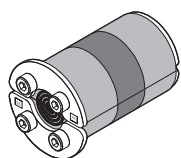
## Roxtec RS ES seal for metal pipes



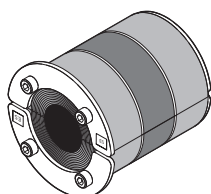
### Safety information

Roxtec recommends that all installations are performed without facility operation. Follow national regulations and installation codes. Any action affecting the routed service should be performed according to manufacturer recommendations.

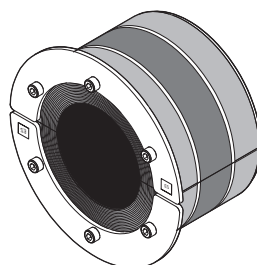
### Components



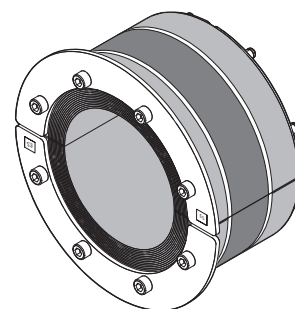
Roxtec RS 25-31 ES



Roxtec RS 43-68 ES



Roxtec RS 75-125 ES

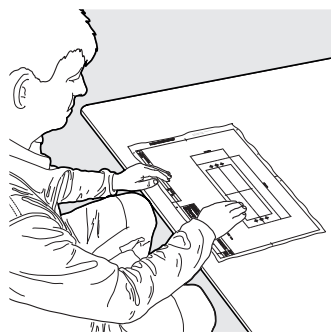


Roxtec RS 150 ES WOC



Roxtec Lubricant

### Additional information



Additional information is available, such as drawings, apertures, videos, ratings and certificates.

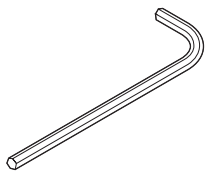


Scan QR-code or visit [roxtec.com](https://www.roxtec.com) for additional information.

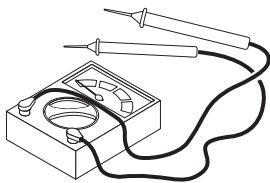
Technical data

Name	Aperture dimension Ø (mm)	For cable/pipe Ø (mm)	Torque (Nm)	Tool size (mm)
RS 25 ES	25 – 26	3.6 – 12	~1	2.5
RS 31 ES	31 – 32	4 – 17	~1	2.5
RS 43 ES	43 – 45	4 – 23	~4	4
RS 50 ES	50 – 52	8 – 30	~4	4
RS 68 ES	68 – 70	26 – 48	~4	4
RS 75 ES	75 – 77	24 – 54	~4	4
RS 100 ES	100 – 102	48 – 70	~4	4
RS 125 ES	125 – 127	66 – 98	~7	5
RS 150 ES	150 – 152	93 – 119	~7	5

Tools

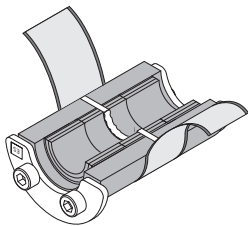


Allen key (not included)



Continuity tester (not included)

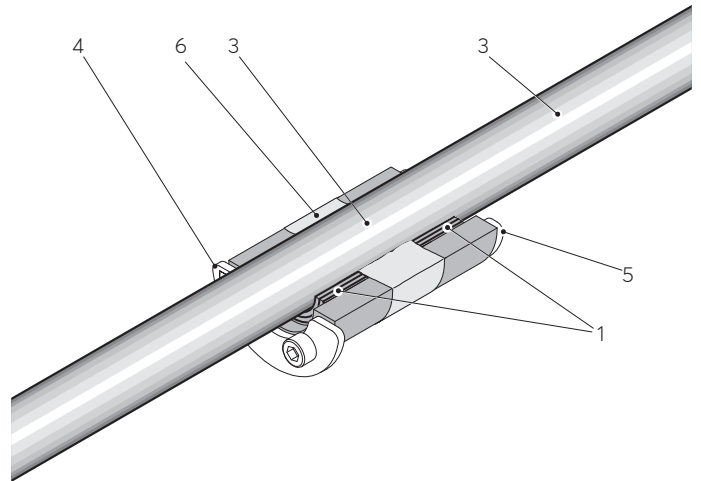
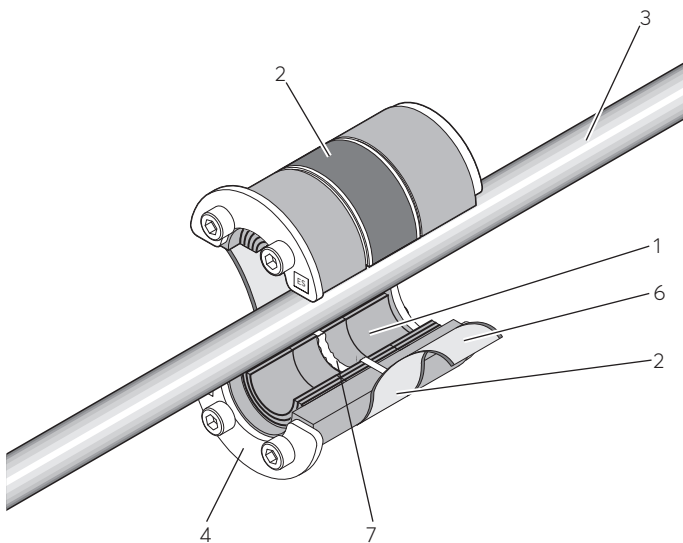
Pipe diameter range



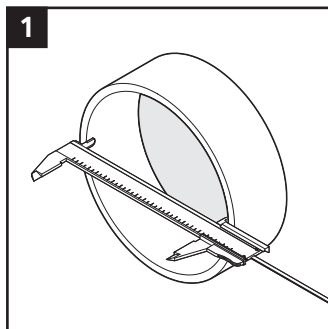
The RS ES seal can accommodate metal pipes within the stated diameter range. Seals with core are spare capacity.

## Product description

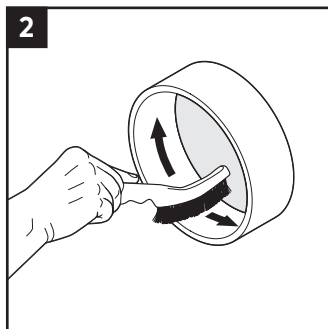
- 1 Removable layers
- 2 Plastic film
- 3 Metal pipe
- 4 Front fittings
- 5 Rear fittings
- 6 Conductive tape
- 7 ES shield



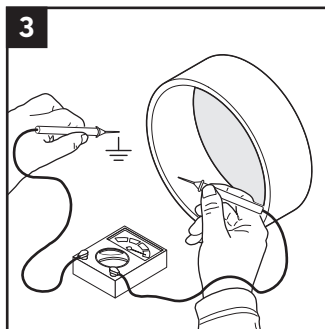
## Installation



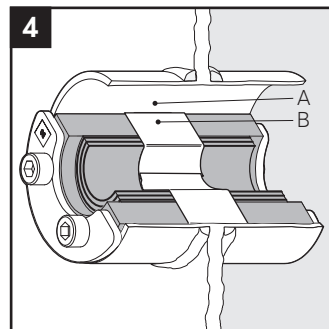
1 Make or verify an aperture.



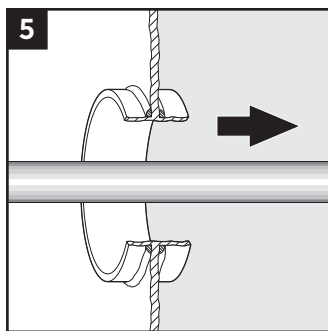
2 Clean the aperture of the sleeve.



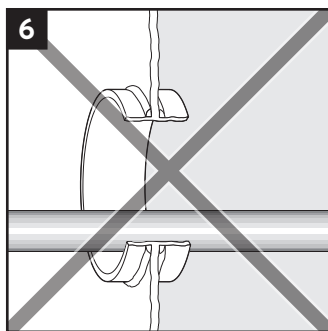
3 The sleeve must have electrical contact with the potential equalization bar.



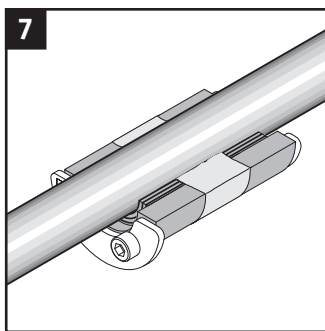
4 There shall be electrical contact between the inner surface of the sleeve (A) where the tape is situated and the tape of the seal (B).



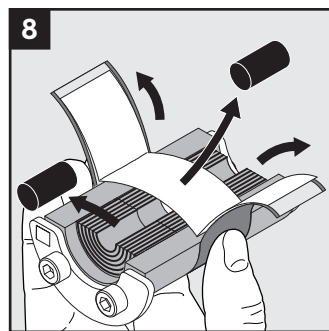
5 The pipe shall go straight and centered through the sleeve.



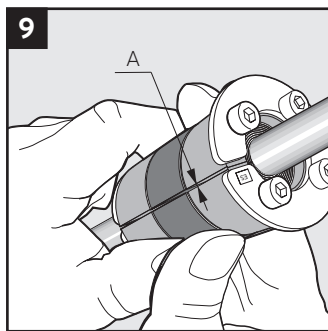
6 Not acceptable.



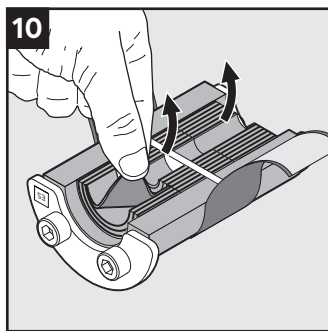
7 Correct placement of a pipe.



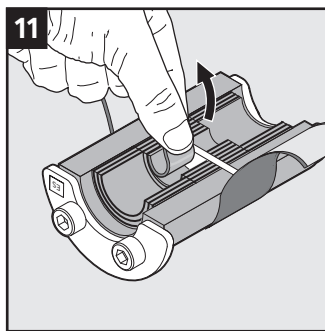
8 Fold back the tape and remove the protection paper and cores. Do this for spare seals as well.



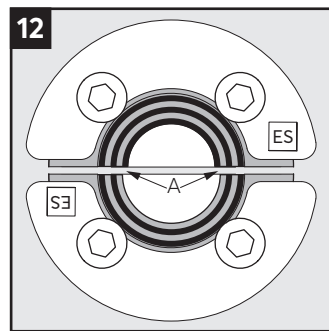
9 Achieve a gap of 0.1-1.0 mm (A) between the two halves when held around the pipe by peeling off layers.



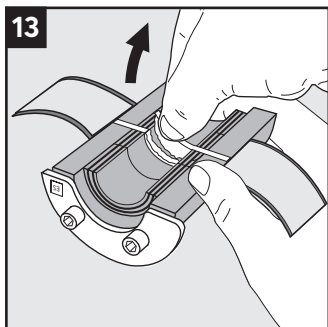
10 Adapt the outer layers that are in contact with the pipe.



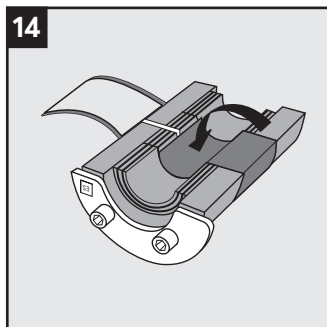
11 Adapt the inner layers that are in contact with the pipe.



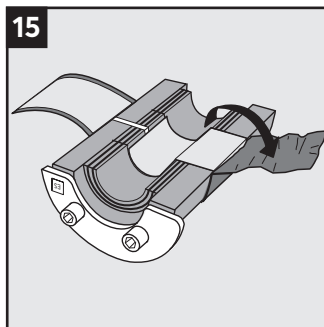
12 The number of layers must not differ (A) by more than one between the corresponding halves.



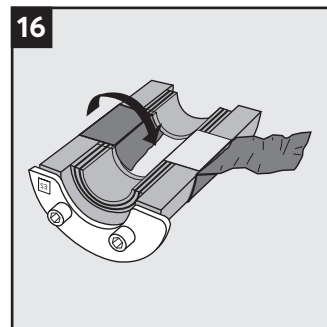
Adapt the vertical ES shield to the metal pipe diameter.



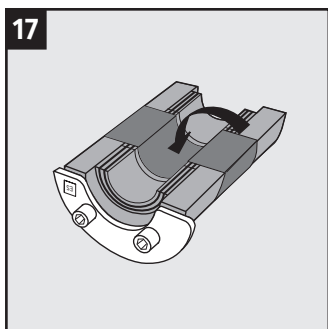
Fold the tape tightly inside the seal.



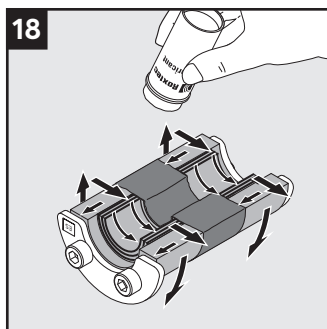
Lift the plastic film from the folded side.



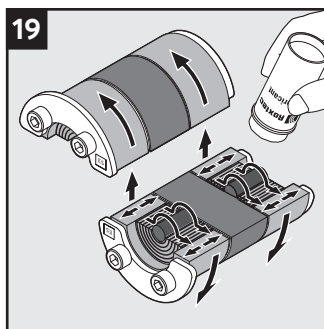
Fold the tape on the other side tightly inside the sealing half.



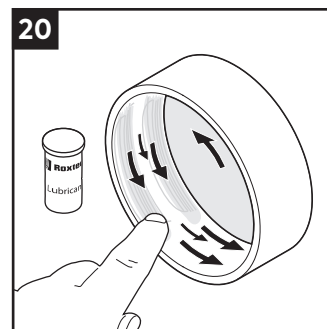
Fold the plastic film back inside the sealing half.



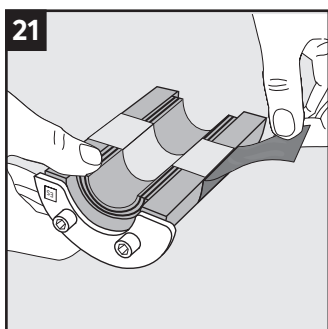
Lubricate the sealing surfaces. Do not lubricate the plastic film.



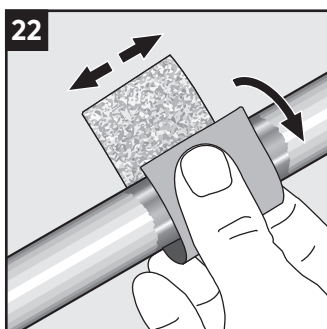
Lubricate the sealing surfaces of any spare seal. Do not remove the core.



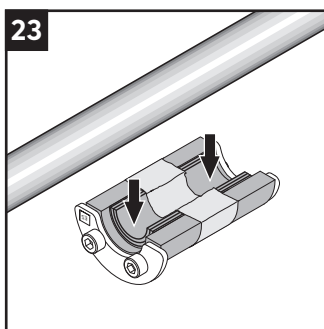
Lubricate the inside surfaces of the sleeve. Lubricate the area that will be in contact with the tape sparsely.



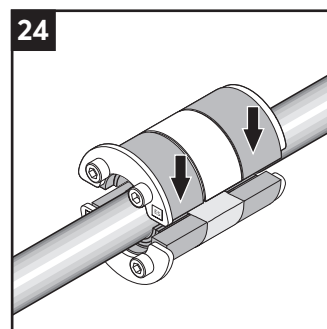
Remove the plastic film. Keep the conductive tape clean.



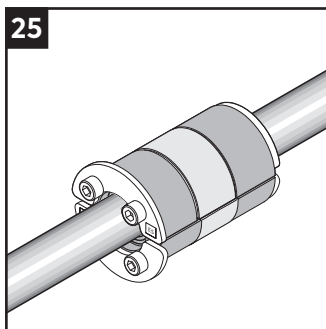
Ensure good conductivity between the metal pipe and the conductive tape.



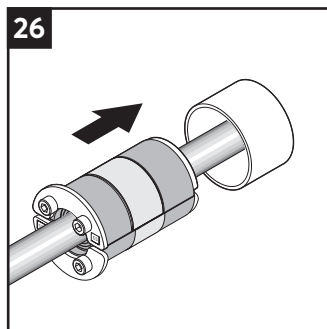
Place the metal pipe in the sealing half.



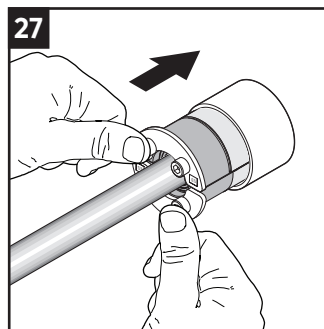
Assemble the seal around the metal pipe.



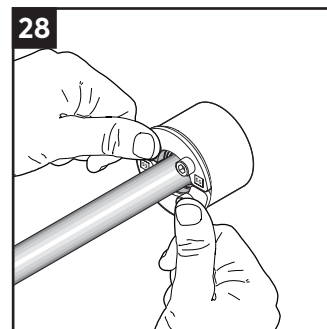
25  
Verify the gap between the seal halves.



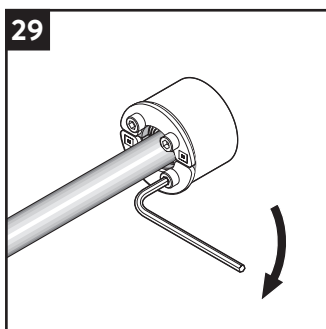
26  
Insert the seal into the sleeve.



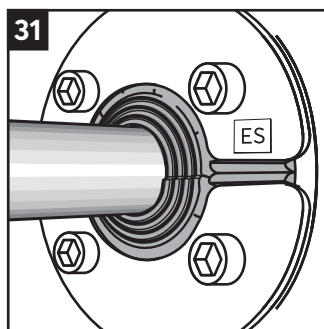
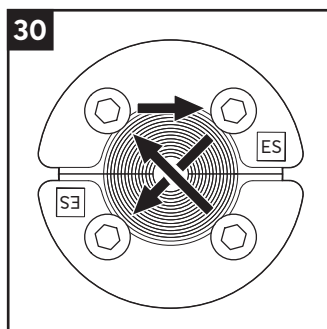
27  
Do not damage the tape.



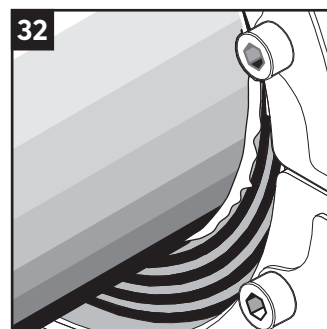
28  
Insert the seal until stop.



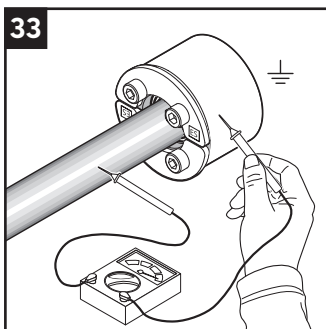
29  
Tighten the screws crosswise in small steps to the specified torque.



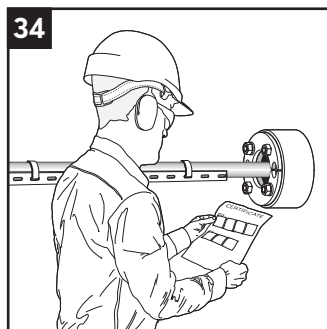
31  
Bulging layers indicate a tight seal.



32  
Excess protruding lubricant indicates a tight seal.

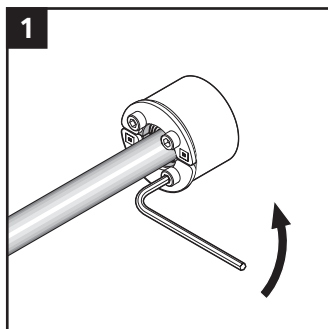


33  
Electrical continuity testing is recommended.

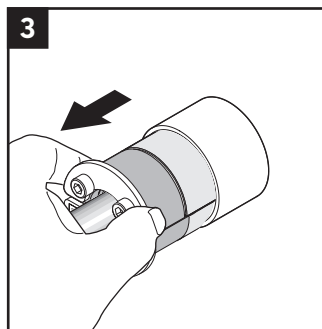
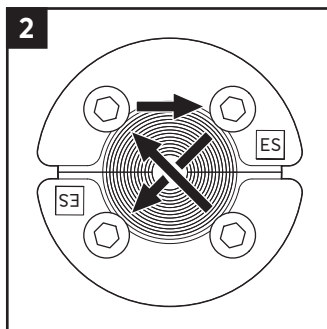


34  
Check additional documentation, if applicable.

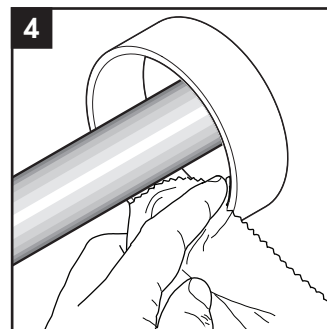
## Disassembly and reinstallation



1  
Untighten the screws crosswise in small steps.



3  
Remove the seal from the sleeve.



4  
Clean the sleeve and continue the reinstallation.

## After installation inspection

- Are the screws evenly tightened?
- Are the layers correctly peeled?
- Is lubricant protruding?
- Is the rubber bulging?

## Note

- Integrated environmental sealing system for electromagnetically shielded applications.
- For optimum reliability, wait 24 hours or longer after installation before exposing the pipe/cable to strain or pressure.
- Cores or pipe/cable must be present in all seals.
- Pipe with a considerable weight needs to be supported.
- An incorrectly adapted seal shall be replaced (layers shall not be reused).
- Corrosion preventing primer must be removed to achieve electrical conductivity, where applicable.
- Approvals or certificates may include amendments or limitations related to this application.
- The latest version of this and related documents are found at [roxtec.com](http://roxtec.com).

## Disclaimer

"The Roxtec cable and pipe entry sealing system ('the Roxtec system') is a modular-based system of sealing products consisting of different components. Each and every one of the components is necessary for the best performance of the Roxtec system. The Roxtec system has been certified to resist a number of different hazards. Any such certification, and the ability of the Roxtec system to resist such hazards, is dependent on all components that are installed as a part of the Roxtec system. Thus, the certification is not valid and does not apply unless all components installed as part of the Roxtec system are manufactured by or under license from Roxtec ('authorized manufacturer'). Roxtec gives no performance guarantee with respect to the Roxtec system, unless (I) all components installed as part of the Roxtec system are manufactured by an authorized manufacturer and (II) the purchaser is in compliance with (a), and (b), below.

(a) During storage, the Roxtec system or part thereof, shall be kept indoors in its original packaging at room temperature.

(b) Installation shall be carried out in accordance with Roxtec installation instructions in effect from time to time.

The product information provided by Roxtec does not release the purchaser of the Roxtec system, or part thereof, from the obligation to independently

determine the suitability of the products for the intended process, installation and/or use.

Roxtec gives no guarantee for the Roxtec system or any part thereof and assumes no liability for any loss or damage whatsoever, whether direct, indirect, consequential, loss of profit or otherwise, occurred or caused by the Roxtec systems or installations containing components not manufactured by an authorized manufacturer and/or occurred or caused by the use of the Roxtec system in a manner or for an application other than for which the Roxtec system was designed or intended.

Roxtec expressly excludes any implied warranties of merchantability and fitness for a particular purpose and all other express or implied representations and warranties provided by statute or common law. User determines suitability of the Roxtec system for intended use and assumes all risk and liability in connection therewith. In no event shall Roxtec be liable for indirect, consequential, punitive, special, exemplary or incidental damages or losses.

The Roxtec products are offered and sold in accordance with the conditions of the Roxtec General Terms of Sales. The latest version of the Roxtec General Terms of Sales can be found and downloaded from [roxtec.com/general-terms-of-sales](http://roxtec.com/general-terms-of-sales).



Roxtec International AB  
Box 540, 371 23 Karlskrona, SWEDEN  
+46 455 36 67 00, [info@roxtec.com](mailto:info@roxtec.com)  
[www.roxtec.com](http://www.roxtec.com)