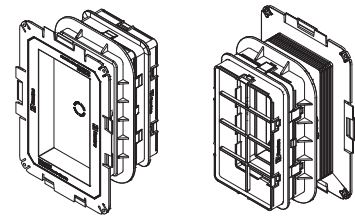
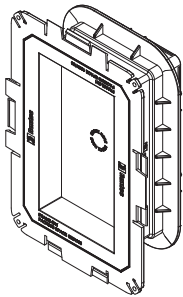


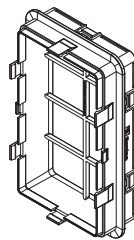
Installation instructions Roxtec Knock-out frame



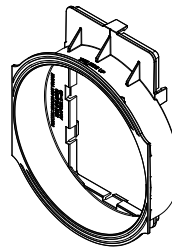
Components



Roxtec Knock-out frame



Roxtec Knock-out frame adapter
+50 mm



Roxtec Knock-out frame adapter
round ø200 +50 mm

Additional information



Additional information is available, such as drawings, apertures, videos, ratings and certificates.

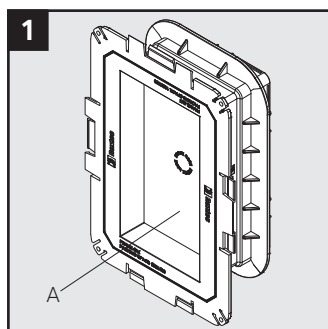


Scan QR code or visit [roxtec.com](https://www.roxtec.com) for additional information.

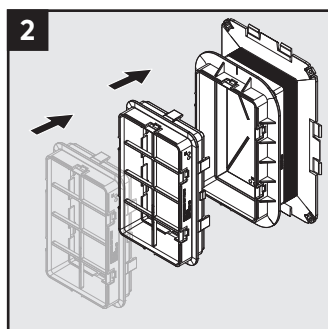
To be installed in

- Concrete walls

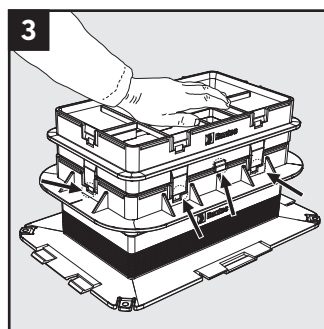
Installation



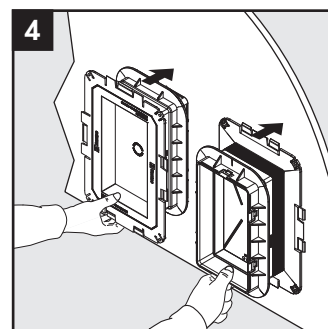
Placement side of sealing components (A) after casting.



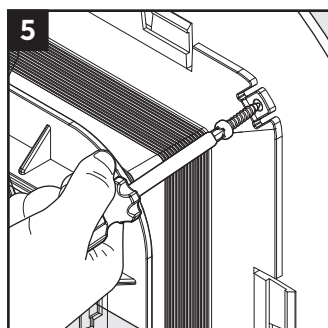
The frame depth can be extended by adding adapters to fit actual wall thickness.



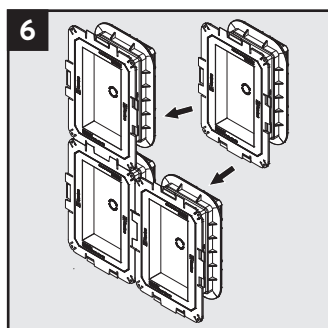
Push the frame extension onto the frame. These will snap together.



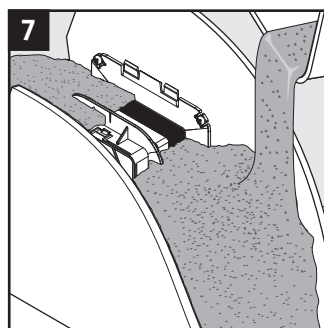
Consider the direction of the sealing component side.



Fasten the frame to the mold.



A number of frames can be snapped together.



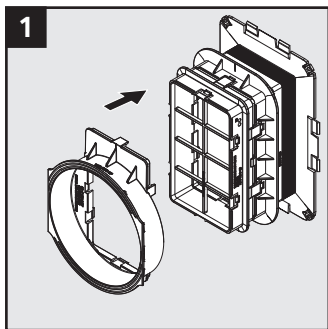
Use watertight concrete with suitable aggregate size. Roxtec casting guidelines are available.

After installation inspection

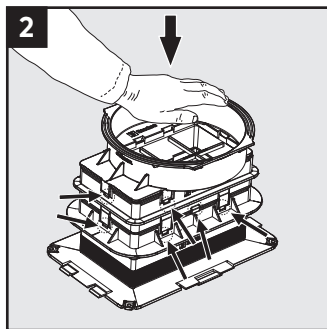
- Are the sealing surfaces of the frame free from concrete or other contaminants?

Using the Roxtec Knock-out frame 6x1 adapter round 200

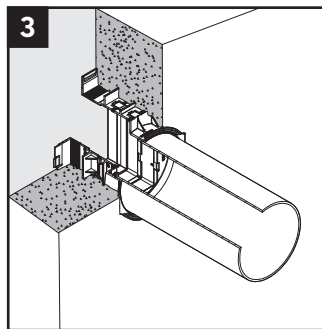
The adapter will allow conduits with a diameter of 200 mm to be connected to the back of the transit.



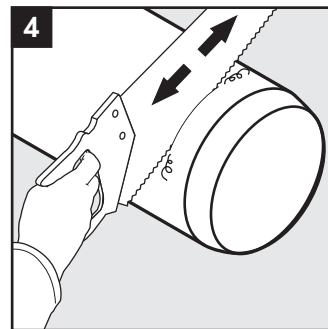
The frame depth can be extended by adding adapters to fit actual wall thickness. Use the rectangular to round adapter closest to the mold.



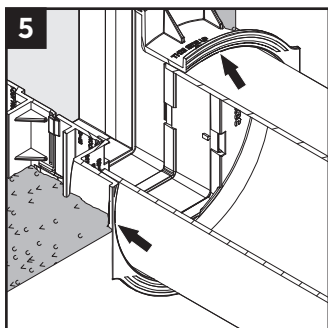
Push the frame extension onto the frame. These will snap together.



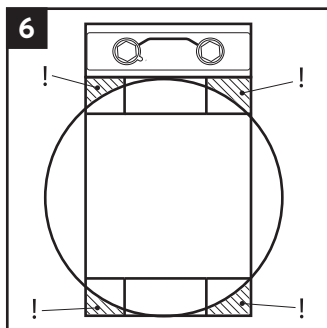
A conduit with a diameter of 200 mm can be inserted at the back of the transit.



If the conduit is chamfered, cut it with a straight and clean cut.



For a pressure tight connection, use sealing mastic between the conduit and adapter.

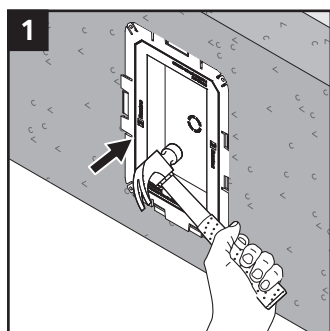


Cable or pipe routing may be constrained.

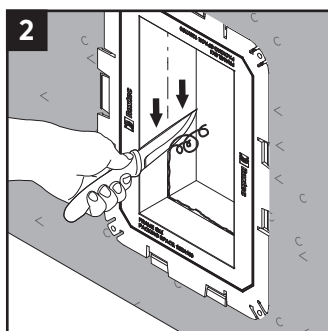
Using round adapters

- Corner modules can have range limitations when a conduit is connected.
- Installation can be limited when stiff cables or pipes are used in corner modules.

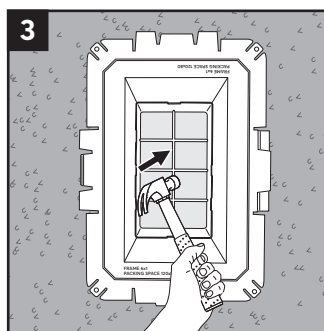
Before routing cables or pipes



Knock out the lid of the frame.



Remove plastic residue from the sealing surfaces.



If frame adapters have been used, remove the net behind the lid.

Note

- Roxtec casting guidelines are available.
- Approvals or certificates may include amendments or limitations related to this application.
- The latest version of this and related documents are found at roxtec.com.
- If an adapter is removed after attachment, it needs to be replaced.

Disclaimer

"The Roxtec cable and pipe entry sealing system ('the Roxtec system') is a modular-based system of sealing products consisting of different components. Each and every one of the components is necessary for the best performance of the Roxtec system. The Roxtec system has been certified to resist a number of different hazards. Any such certification, and the ability of the Roxtec system to resist such hazards, is dependent on all components that are installed as a part of the Roxtec system. Thus, the certification is not valid and does not apply unless all components installed as part of the Roxtec system are manufactured by or under license from Roxtec ('authorized manufacturer'). Roxtec gives no performance guarantee with respect to the Roxtec system, unless (I) all components installed as part of the Roxtec system are manufactured by an authorized manufacturer and (II) the purchaser is in compliance with (a), and (b), below.

(a) During storage, the Roxtec system or part thereof, shall be kept indoors in its original packaging at room temperature.

(b) Installation shall be carried out in accordance with Roxtec installation instructions in effect from time to time.

The product information provided by Roxtec does not release the purchaser of the Roxtec system, or part thereof, from the obligation to independently

determine the suitability of the products for the intended process, installation and/or use.

Roxtec gives no guarantee for the Roxtec system or any part thereof and assumes no liability for any loss or damage whatsoever, whether direct, indirect, consequential, loss of profit or otherwise, occurred or caused by the Roxtec systems or installations containing components not manufactured by an authorized manufacturer and/or occurred or caused by the use of the Roxtec system in a manner or for an application other than for which the Roxtec system was designed or intended.

Roxtec expressly excludes any implied warranties of merchantability and fitness for a particular purpose and all other express or implied representations and warranties provided by statute or common law. User determines suitability of the Roxtec system for intended use and assumes all risk and liability in connection therewith. In no event shall Roxtec be liable for indirect, consequential, punitive, special, exemplary or incidental damages or losses.

The Roxtec products are offered and sold in accordance with the conditions of the Roxtec General Terms of Sales. The latest version of the Roxtec General Terms of Sales can be found and downloaded from roxtec.com/general-terms-of-sales."



Roxtec International AB
Box 540, 371 23 Karlskrona, SWEDEN
+46 455 36 67 00, info@roxtec.com
www.roxtec.com