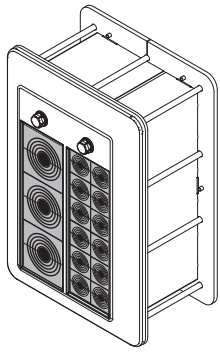
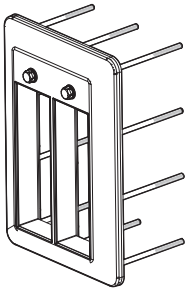


Installation instructions

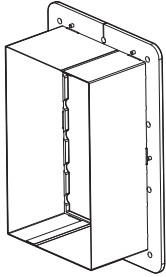
Roxtec LabSeal C LTX



Components



Roxtec LabSeal C LTX frame



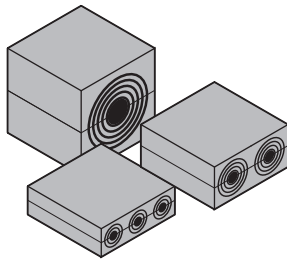
Roxtec LabSeal C LTX counter frame



Nuts

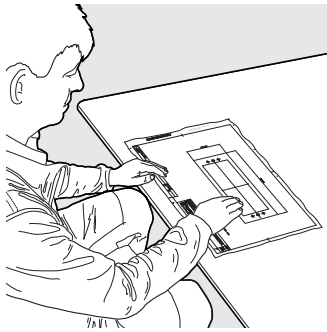


Roxtec Assembly Gel White



Roxtec CM modules

Additional information



Additional information such as drawings, aperture, videos, ratings and certificates is available.

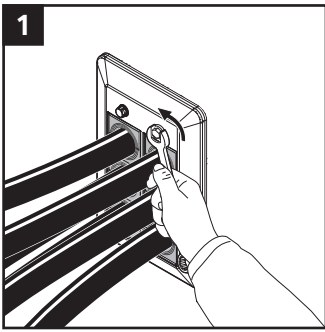


Scan qr-code or visit [roxtec.com](https://www.roxtec.com) for additional information.

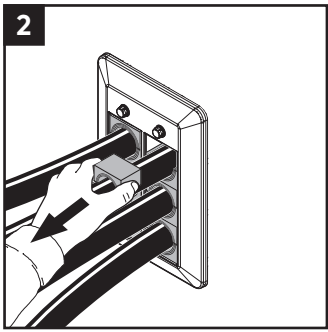
Tools

- Spanner 13 mm (not included)
- Roxtec pre-compression tool (not included)

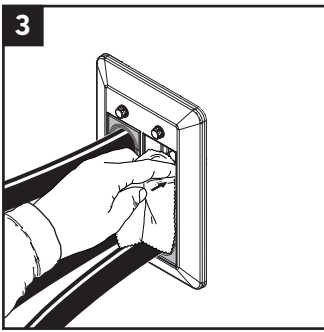
Disassembly and reinstallation



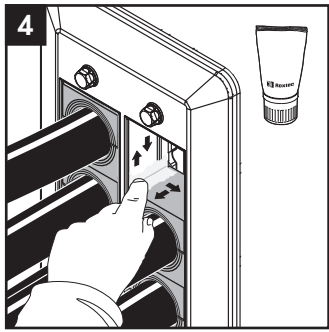
Loosen the screws crosswise in small steps.



Remove the modules required.



Clean the exposed sealing surfaces.

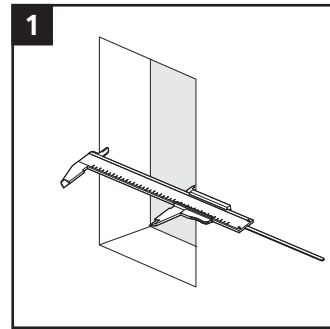


Lubricate the exposed surfaces. Continue the reinstallation.

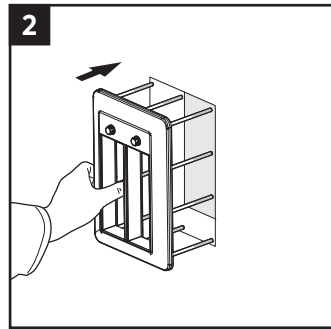
Note

- To be used together with Roxtec CM modules.
- For optimum reliability, wait 24 hours or longer after installation before exposing the cables/pipes to strain or pressure.
- If surface roughness requirements apply, be careful not to scratch the surfaces of any components.
- The structure should be even and flat, any joints must be prepared and even to create a tight connection between structure and frame.
- Cable/pipe of considerable weight should be supported
- Approvals or certificates may include amendments or limitations related to this application.
- The latest version of this and related documents are found at [roxtec.com](https://www.roxtec.com).

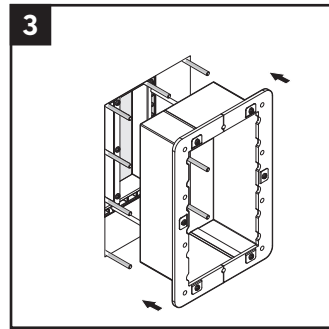
Installation



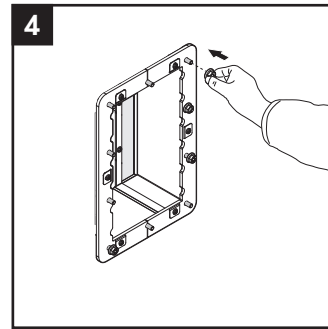
Make or verify an aperture. The mounting surface should be even and flat. Any joints must be prepared and even.



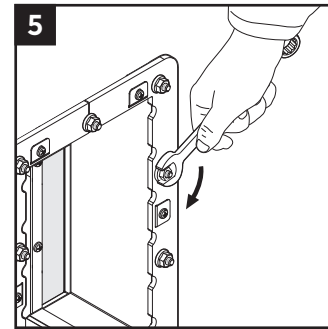
Place the frame against the structure.



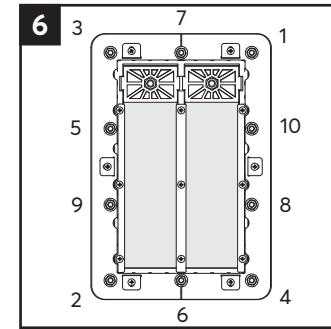
Attach the counter frame.



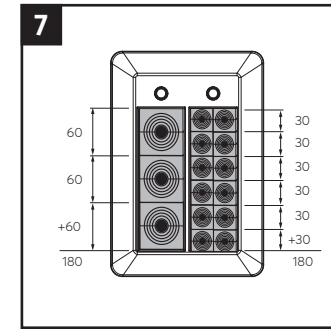
Attach the nuts.



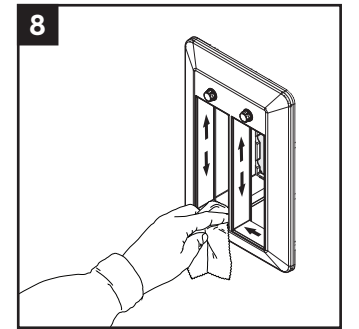
Tighten the nuts crosswise in small steps.



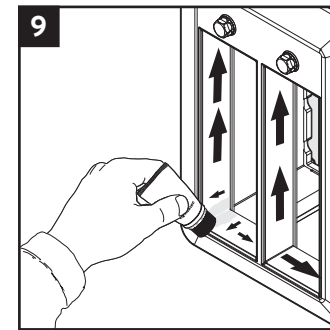
Tightening order.



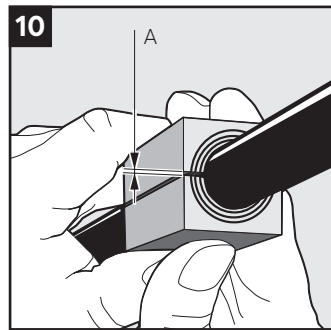
Consider the packing height, 180 mm of the frame. This is an example of a packing plan.



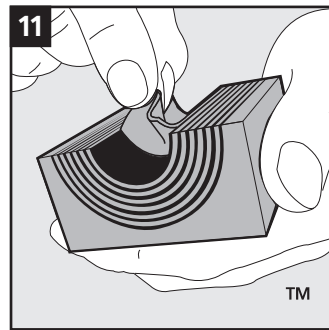
Clean the inside of the frame.



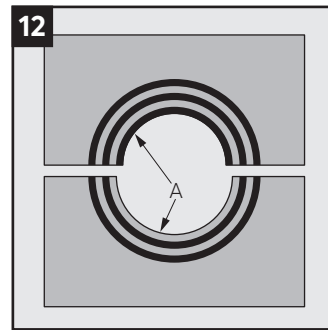
Lubricate the sealing surfaces of the frame, especially in the corners.



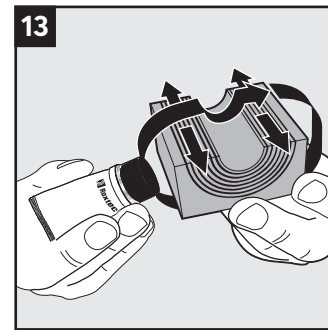
Achieve a 0.1-1.0 mm (A) gap between the two module halves when held against the cable/pipe.



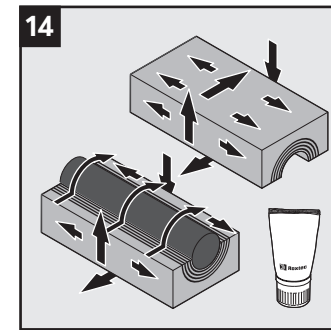
Adapt the modules by peeling off layers.



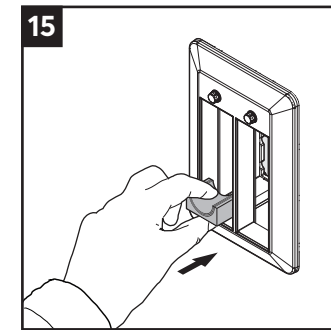
The number of layers may not differ (A) by more than one between the corresponding module halves.



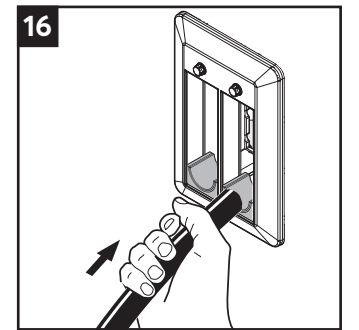
Lubricate the sealing surfaces of all modules with Roxtec Assembly Gel White.



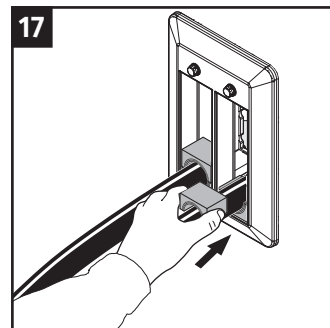
Lubricate the sealing surfaces of the spare modules. Do not remove the core.



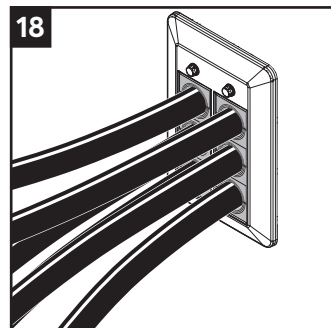
Insert the modules. The modules shall align with the front face of the frame.



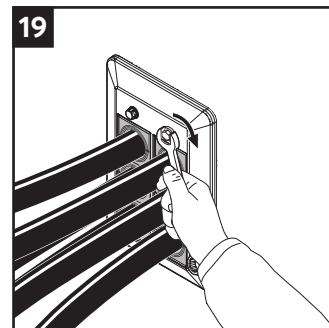
Insert cables/pipes straight through the frame.



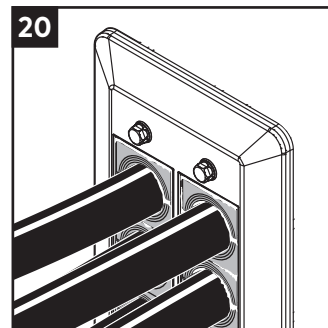
Place the corresponding module halves on top. Continue to fill the transit considering your packing plan.



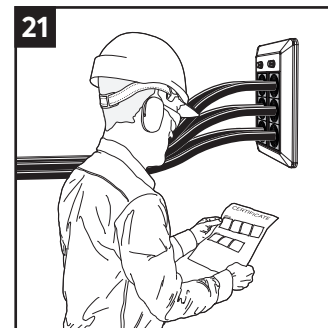
All packing spaces shall be filled before the compression screws are tightened.



Tighten the screws alternately in small steps until full mechanical stop (max 20 Nm).



Protruding excess lubricant indicates a tight seal.



Check additional documentation, if applicable.

After installation inspection

- Are the compression screws fully tightened?
- Is there visible protruding lubricant?
- Is the combined height of modules correct according to the frame packing height?
- Are all modules placed correctly and fully inserted after compression?

Disclaimer

*The Roxtec cable and pipe entry sealing system ('the Roxtec system') is a modular-based system of sealing products consisting of different components. Each and every one of the components is necessary for the best performance of the Roxtec system. The Roxtec system has been certified to resist a number of different hazards. Any such certification, and the ability of the Roxtec system to resist such hazards, is dependent on all components that are installed as a part of the Roxtec system. Thus, the certification is not valid and does not apply unless all components installed as part of the Roxtec system are manufactured by or under license from Roxtec (authorized manufacturer). Roxtec gives no performance guarantee with respect to the Roxtec system, unless (I) all components installed as part of the Roxtec system are manufactured by an authorized manufacturer and (II) the purchaser is in compliance with (a), and (b), below.

(a) During storage, the Roxtec system or part thereof, shall be kept indoors in its original packaging at room temperature.

(b) Installation shall be carried out in accordance with Roxtec installation instructions in effect from time to time.

The product information provided by Roxtec does not release the purchaser of the Roxtec system, or part thereof, from the obligation to independently

determine the suitability of the products for the intended process, installation and/or use.

Roxtec gives no guarantee for the Roxtec system or any part thereof and assumes no liability for any loss or damage whatsoever, whether direct, indirect, consequential, loss of profit or otherwise, occurred or caused by the Roxtec systems or installations containing components not manufactured by an authorized manufacturer and/or occurred or caused by the use of the Roxtec system in a manner or for an application other than for which the Roxtec system was designed or intended.

Roxtec expressly excludes any implied warranties of merchantability and fitness for a particular purpose and all other express or implied representations and warranties provided by statute or common law. User determines suitability of the Roxtec system for intended use and assumes all risk and liability in connection therewith. In no event shall Roxtec be liable for indirect, consequential, punitive, special, exemplary or incidental damages or losses.

The Roxtec products are offered and sold in accordance with the conditions of the Roxtec General Terms of Sales. The latest version of the Roxtec General Terms of Sales can be found and downloaded from roxtec.com/general-terms-of-sales.



Roxtec International AB
Box 540, 371 23 Karlskrona, SWEDEN
+46 455 36 67 00, info@roxtec.com
www.roxtec.com