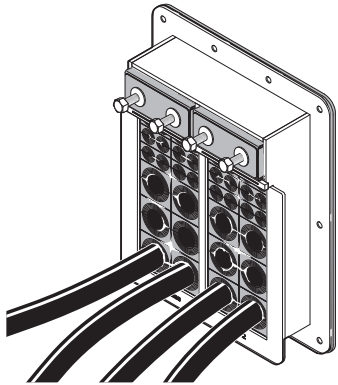
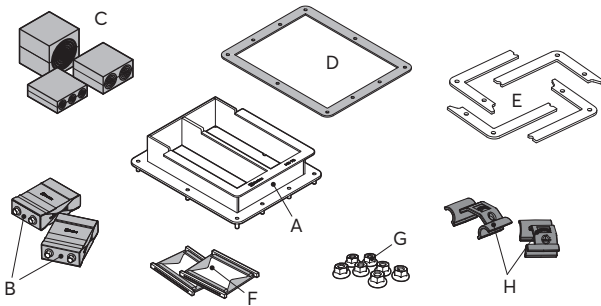


Installation instructions

Roxtec HD 72 transit



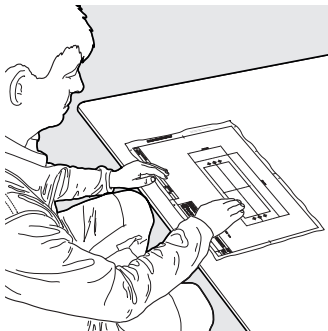
Components



A: HD 72 frame
B: Wedges
C: HD modules
D: Gasket
E: Counter frame

F: HD 72 stayplates
G: Fasteners
H: Wedge clips

Additional information



Scan QR code or visit roxtec.com for additional information such as drawings, aperture, videos, ratings and certificates.

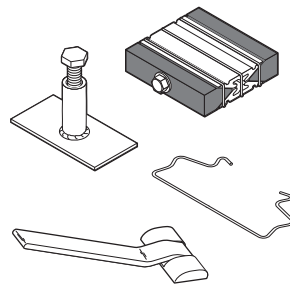
Note

- An incorrectly adapted module shall be replaced (layers shall not be reused).
- Wait 24 hours or longer after installation before exposing the cables/pipes to strain or pressure.
- To be used with: Roxtec HD components.
- Cables/pipes shall go straight through the frame.
- Approvals or certificates may include amendments or limitations related to this application.
- The latest version of this and related documents are found at roxtec.com.

Tools

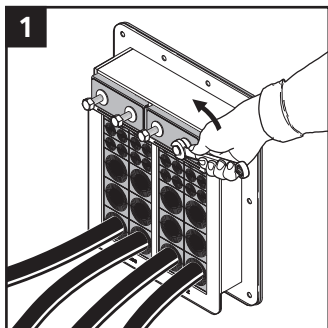
- 10 mm and 13 mm spanner (not included)
- Roxtec pre-compression tool (not included)

Roxtec tools

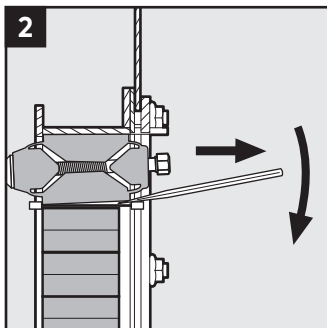


Scan QR code or visit roxtec.com for information about Roxtec tools.

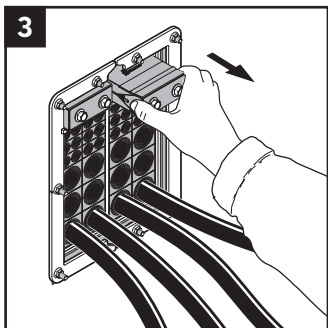
Disassembly and reinstallation



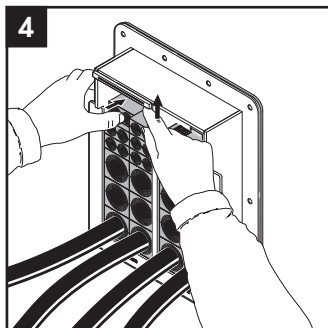
1
Untighten the screw of the wedge.



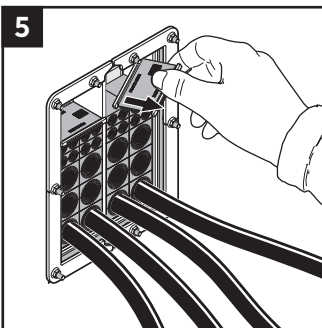
2
Insert a flat tool between the wedge and the stayplate to simplify removal of the wedge.



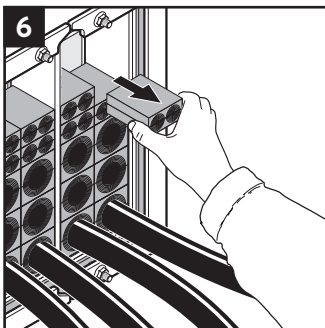
3
Remove the wedge.



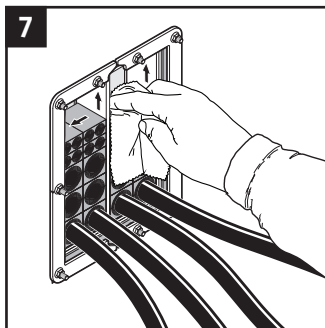
4
Lift the stayplate and push out the upper module from the front side.



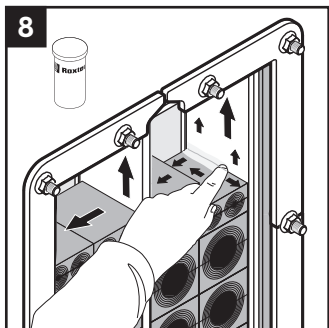
5
Remove the stayplate.



6
Continue to remove the modules by pulling them out from the backside of the frame.



7
Clean the exposed surfaces.



8
Lubricate the exposed surfaces, especially in the corners. Continue the reinstallation.

After installation inspection

- Is the wedge correctly oriented?
- Is there visible protruding lubricant?
- Is the combined height of modules correct according to the frame packing height?
- Make sure that all modules are placed correctly and fully inserted after compression.

Disclaimer

"The Roxtec cable and pipe entry sealing system ('the Roxtec system') is a modular-based system of sealing products consisting of different components. Each and every one of the components is necessary for the best performance of the Roxtec system. The Roxtec system has been certified to resist a number of different hazards. Any such certification, and the ability of the Roxtec system to resist such hazards, is dependent on all components that are installed as a part of the Roxtec system. Thus, the certification is not valid and does not apply unless all components installed as part of the Roxtec system are manufactured by or under license from Roxtec ('authorized manufacturer'). Roxtec gives no performance guarantee with respect to the Roxtec system, unless (i) all components installed as part of the Roxtec system are manufactured by an authorized manufacturer and (ii) the purchaser is in compliance with (a), and (b), below.

(a) During storage, the Roxtec system or part thereof, shall be kept indoors in its original packaging at room temperature.

(b) Installation shall be carried out in accordance with Roxtec installation instructions in effect from time to time.

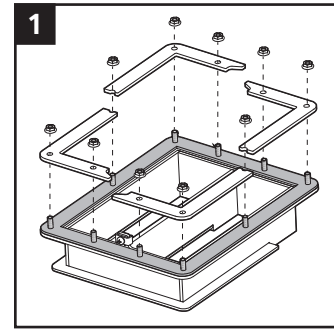
The product information provided by Roxtec does not release the purchaser of the Roxtec system, or part thereof, from the obligation to independently

determine the suitability of the products for the intended process, installation and/or use.

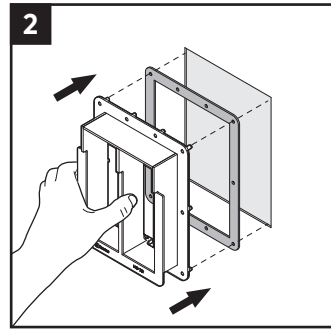
Roxtec gives no guarantee for the Roxtec system or any part thereof and assumes no liability for any loss or damage whatsoever, whether direct, indirect, consequential, loss of profit or otherwise, occurred or caused by the Roxtec systems or installations containing components not manufactured by an authorized manufacturer and/or occurred or caused by the use of the Roxtec system in a manner or for an application other than for which the Roxtec system was designed or intended.

Roxtec expressly excludes any implied warranties of merchantability and fitness for a particular purpose and all other express or implied representations and warranties provided by statute or common law. User determines suitability of the Roxtec system for intended use and assumes all risk and liability in connection therewith. In no event shall Roxtec be liable for indirect, consequential, punitive, special, exemplary or incidental damages or losses. The Roxtec products are offered and sold in accordance with the conditions of the Roxtec General Terms of Sales. The latest version of the Roxtec General Terms of Sales can be found and downloaded from roxtec.com/general-terms-of-sales."

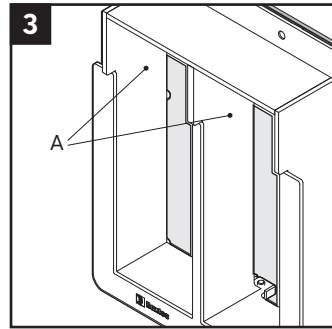
Installation



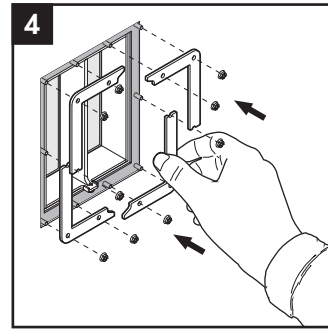
Remove the four parts of the counter frame.



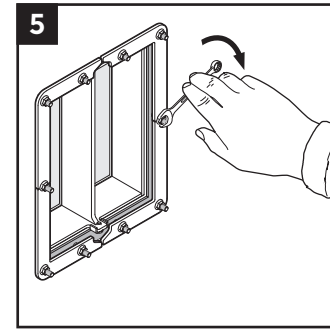
Insert the frame from the outside of the cabinet with the gasket in between.



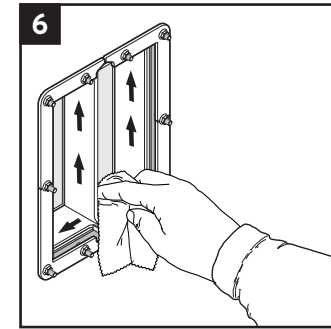
Observe the intended wedge area (A) without stopping edges.



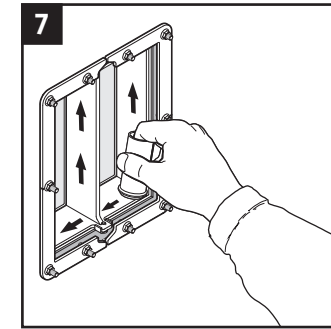
Attach the four parts of the counter frame from the inside of the cabinet.



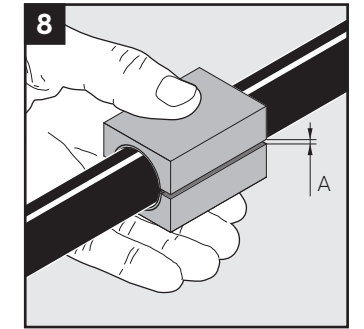
Tighten the nuts crosswise in small steps. Recommended torque 4 Nm.



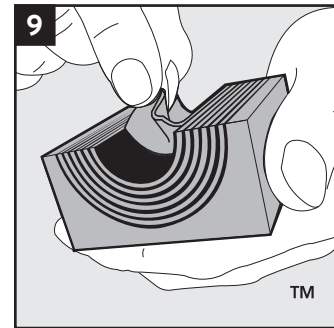
Clean the frame.



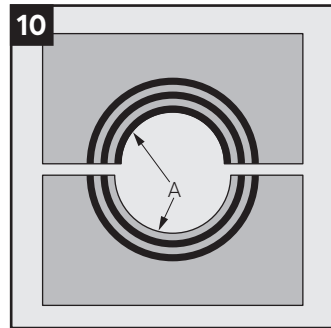
Lubricate the sealing surfaces of the frame. Lubricate the corners thoroughly.



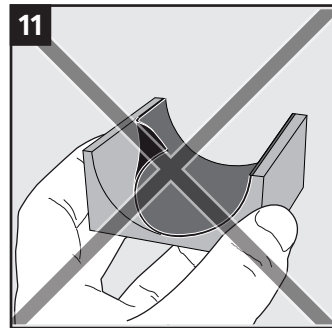
Achieve a gap of 0.1-1.0 mm (A) between the module halves by peeling off layers.



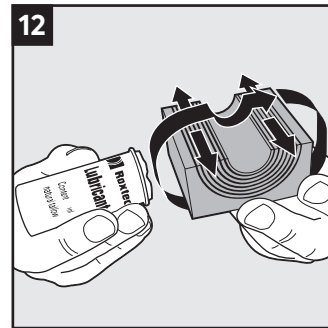
Adapt the layers that are in contact with the cable jacket.



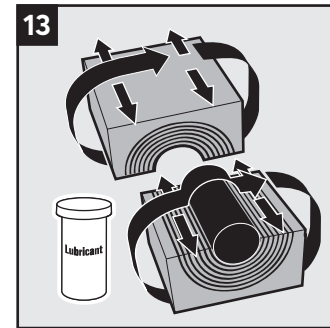
The number of layers may not differ (A) by more than one between the corresponding module halves.



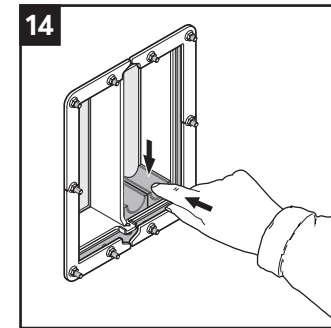
Do not remove the last layer.



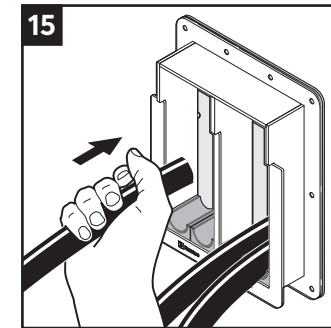
Lubricate the sealing surfaces of all modules with Roxtec Lubricant.



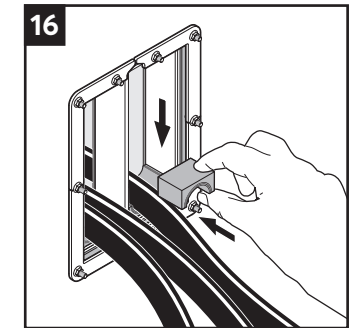
Lubricate the sealing surfaces of the spare modules. Do not remove the core.



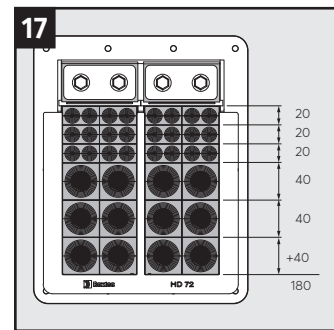
Insert the modules from the back side of the transit according to the packing plan. Push the modules against the stopping edge.



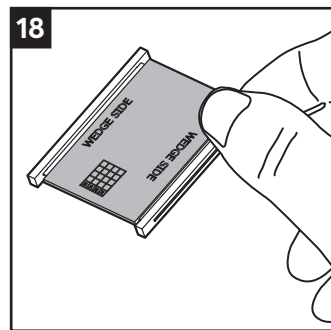
Insert cables/pipes straight through the frame.



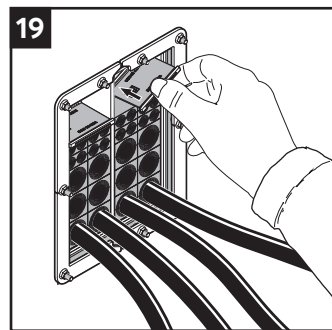
Place the corresponding module half on top. Continue to fill the transit considering your packing plan.



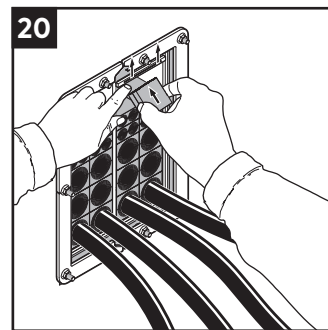
Consider the packing height of the frame. This is an example of a packing plan.



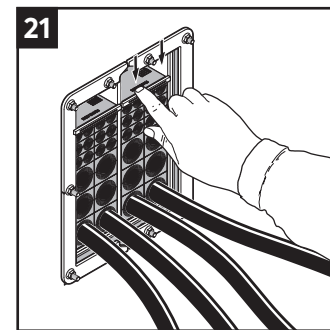
Orientate the stayplate so the text "wedge side" faces the wedge.



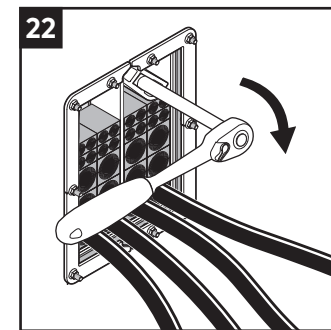
Insert the stayplate.



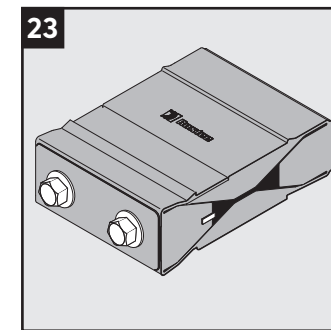
Lift the upper stayplate and insert the last module underneath it.



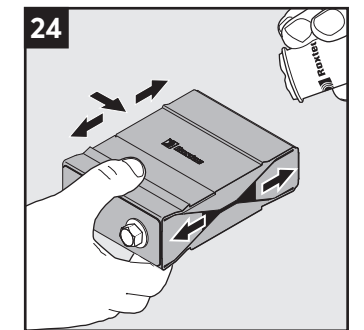
Drop the stayplate on top of the last row of modules.



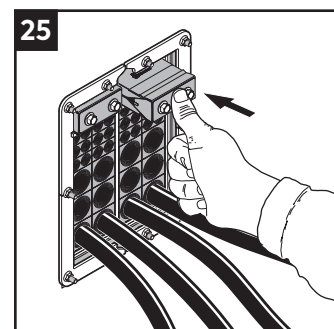
Use a Roxtec pre-compression tool to make space for the wedges, if required.



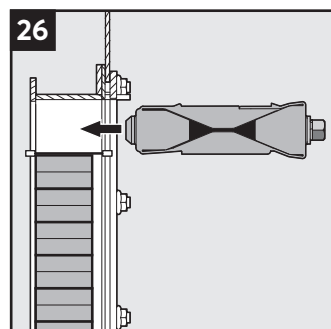
Ensure that the wedge is fully uncompressed by untightening the screw before inserting it.



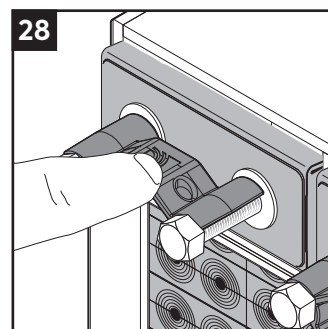
Lubricate the indicated areas of the wedges.



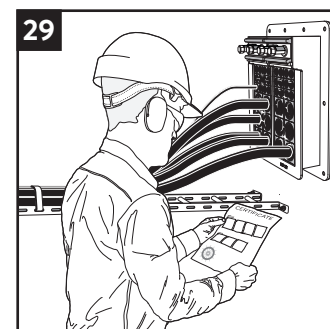
Insert the wedges from the inside of the openings until stop. The wedges can be placed with the screwhead facing either into or out of the opening.



Tighten the screws alternately in small steps until full mechanical stop (~25-30 Nm). Protruding excess lubricant indicates a tight seal.



Attach the wedge clip. The wedge clip verifies correctly tightened wedge.



Check additional documentation, if applicable.



Roxtec International AB
Box 540, 371 23 Karlskrona, SWEDEN
+46 455 36 67 00, info@roxtec.com
www.roxtec.com