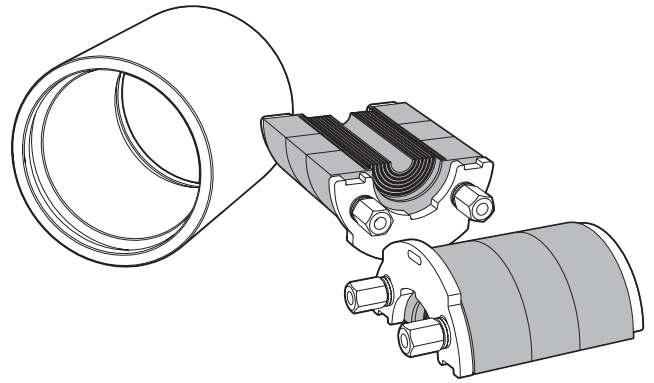
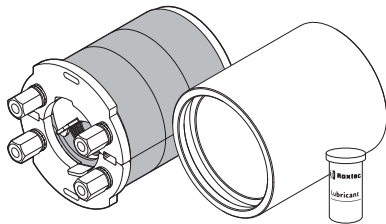


Installation instructions

Roxtec TB seal

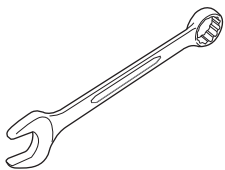


Components

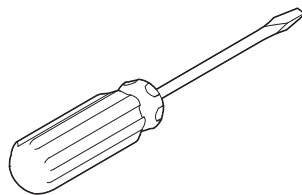


TB seal with Multidiameter™

Tools



Spanner (not included).

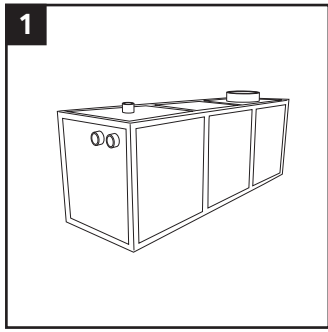


Suitable flat tool
(not included)

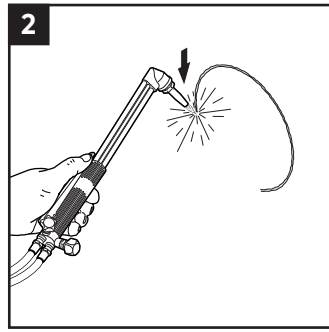
Technical data

Name	Aperture dimension Ø (mm)	For cable/pipe Ø (mm)	Tool size (mm)
TB 65 KIT	80 – 82	4 – 30	10
TB 105 KIT	120 – 122	24 – 54	13

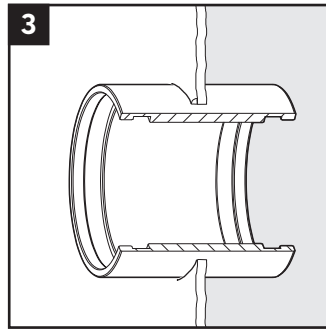
Installation



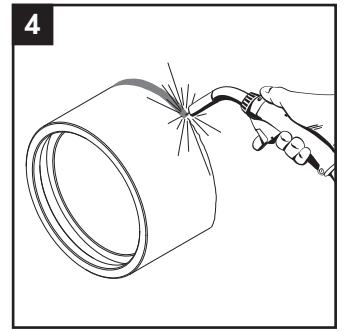
For tank applications, it is recommended to install sleeve on top, or as high up as possible.



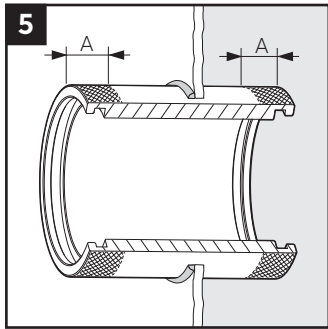
Make or verify an aperture.



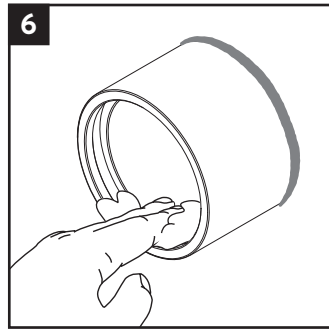
Insert the sleeve into the aperture.



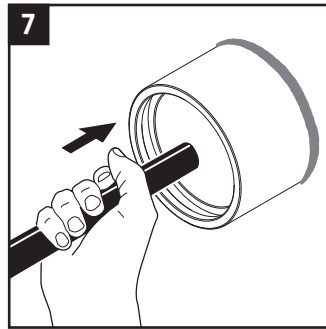
Weld the sleeve to the structure.



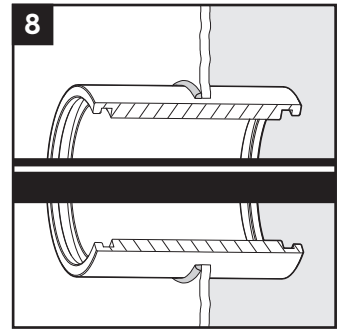
Do not weld within 15 mm (A) from the edge of the sleeve.



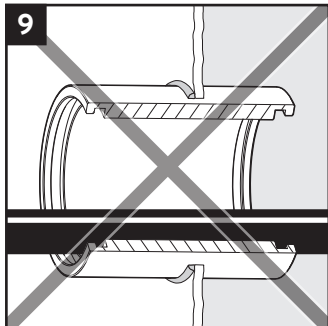
Clean the sleeve.



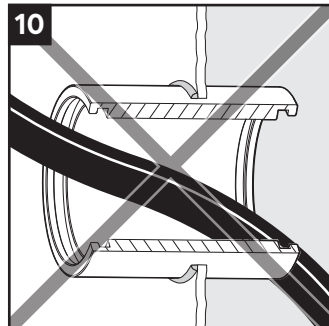
Insert the cable/pipe.



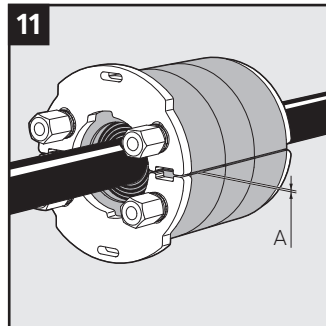
The cable/pipe shall go straight and centered through the sleeve.



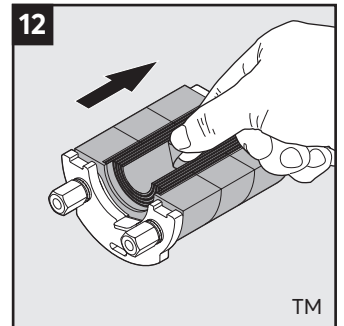
Not acceptable.



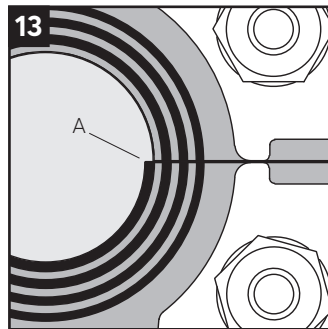
Not acceptable.



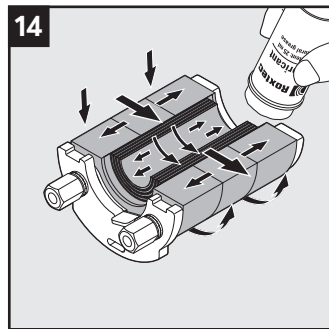
Achieve a gap (A) of 0.1 - 1.0 mm.



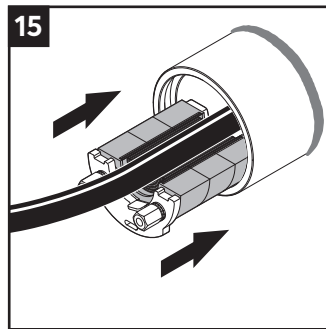
Adapt the seal halves to the cable/pipe size by peeling off layers.



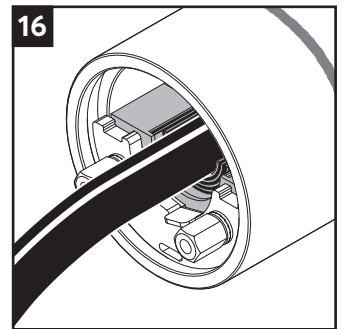
The number of layers may not differ (A) by more than one between the corresponding seal halves.



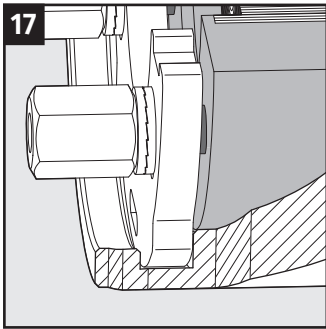
Lubricate the sealing surfaces with Rextec Lubricant.



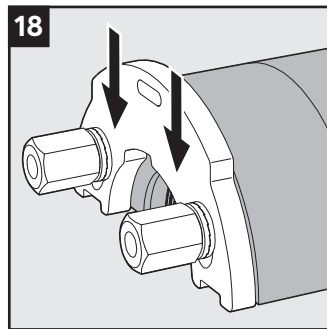
Insert the first half into the sleeve.



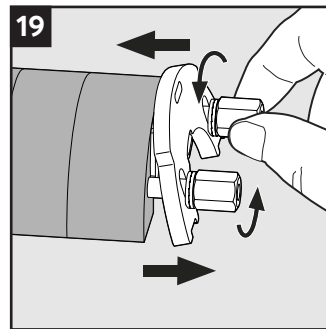
Make sure the front fitting is as far into the groove as possible.



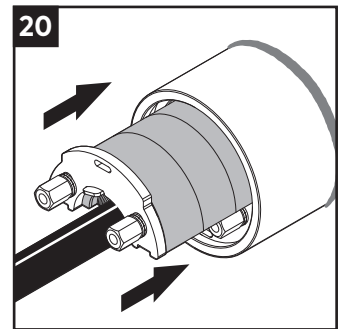
The front fitting secured in the groove.



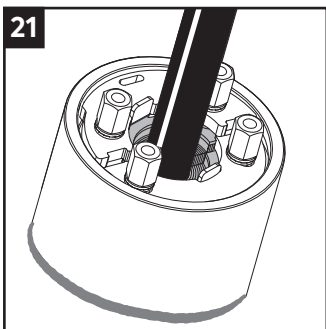
On the second seal half, press the front fitting as far towards the center as possible.



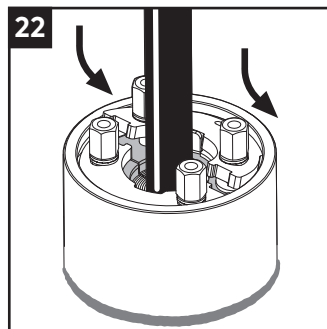
Loosen the nuts and tilt the fitting.



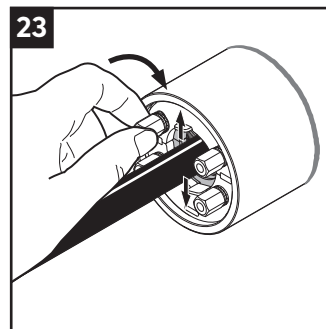
Insert the second seal half into the sleeve.



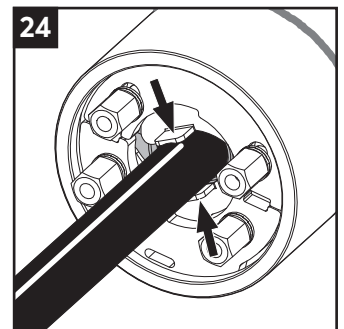
The fitting of the second seal half will rest upon the other fitting.



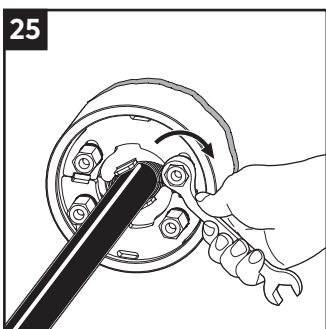
Slide the second fitting into the groove.



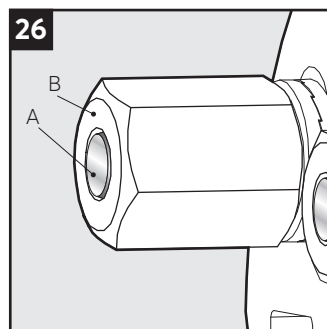
Ensure that both fittings are as far into the groove as possible and tighten the nuts with your fingers.



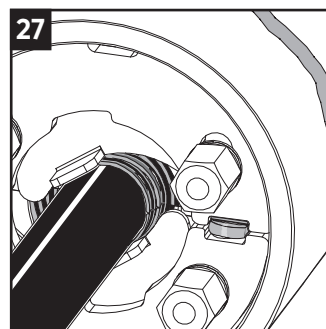
Adjust both rotation fittings to the cable/pipe.



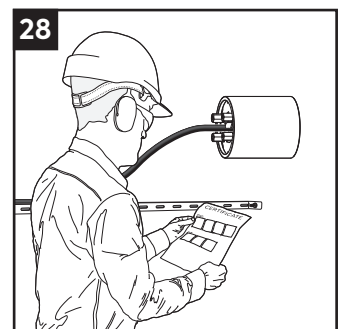
Tighten the nuts firmly. The nuts shall be tightened crosswise and in small steps.



Full compression is normally achieved when the end faces of the screws (A) are flush with the end faces of the nuts (B).

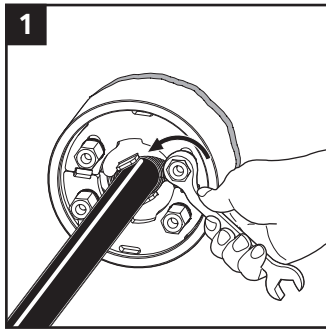


Excess protruding lubricant shall be visible and the rubber shall bulge. If not, further tighten the nuts.

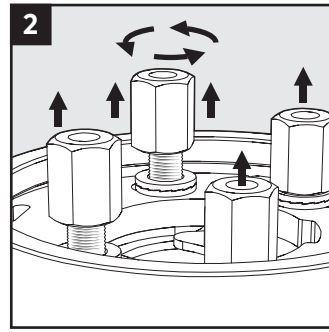


Check additional documentation, if applicable.

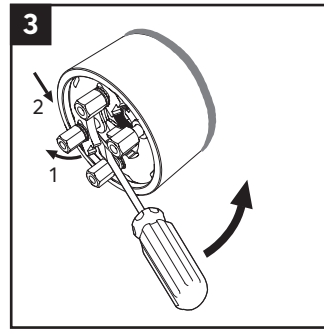
Disassembly



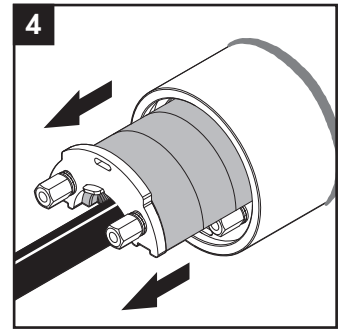
1
Untighten the nuts crosswise in small steps.



2
Unscrew the nuts.



3
Angle the fitting by using a flat tool. Push it towards the center.



4
Remove the seal halves.

Note

- The seal shall be inserted with the front fittings facing the side without pressure hazard.
- An incorrectly adapted seal shall be replaced (layers shall not be reused).
- Wait 24 hours or longer after installation before exposing the cables or pipes to strain or pressure.
- Different approvals or certificates may include amendments or limitations related to this application.
- The TB seal shall only be used with a TB sleeve.
- The TB seal with multidiameter™ shall only be used with routed cable/pipe (not to be used with core).

Disclaimer

*The Roxtec cable and pipe entry sealing system ('the Roxtec system') is a modular-based system of sealing products consisting of different components. Each and every one of the components is necessary for the best performance of the Roxtec system. The Roxtec system has been certified to resist a number of different hazards. Any such certification, and the ability of the Roxtec system to resist such hazards, is dependent on all components that are installed as a part of the Roxtec system. Thus, the certification is not valid and does not apply unless all components installed as part of the Roxtec system are manufactured by or under license from Roxtec ('authorized manufacturer'). Roxtec gives no performance guarantee with respect to the Roxtec system, unless (I) all components installed as part of the Roxtec system are manufactured by an authorized manufacturer and (II) the purchaser is in compliance with (a), and (b), below.

(a) During storage, the Roxtec system or part thereof, shall be kept indoors in its original packaging at room temperature.

(b) Installation shall be carried out in accordance with Roxtec installation instructions in effect from time to time.

The product information provided by Roxtec does not release the purchaser of the Roxtec system, or part thereof, from the obligation to independently

determine the suitability of the products for the intended process, installation and/or use.

Roxtec gives no guarantee for the Roxtec system or any part thereof and assumes no liability for any loss or damage whatsoever, whether direct, indirect, consequential, loss of profit or otherwise, occurred or caused by the Roxtec systems or installations containing components not manufactured by an authorized manufacturer and/or occurred or caused by the use of the Roxtec system in a manner or for an application other than for which the Roxtec system was designed or intended.

Roxtec expressly excludes any implied warranties of merchantability and fitness for a particular purpose and all other express or implied representations and warranties provided by statute or common law. User determines suitability of the Roxtec system for intended use and assumes all risk and liability in connection therewith. In no event shall Roxtec be liable for indirect, consequential, punitive, special, exemplary or incidental damages or losses. The Roxtec products are offered and sold in accordance with the conditions of the Roxtec General Terms of Sales. The latest version of the Roxtec General Terms of Sales can be found and downloaded from roxtec.com/general-terms-of-sales.*



Roxtec International AB
Box 540, 371 23 Karlskrona, SWEDEN
+46 455 36 67 00, info@roxtec.com
www.roxtec.com