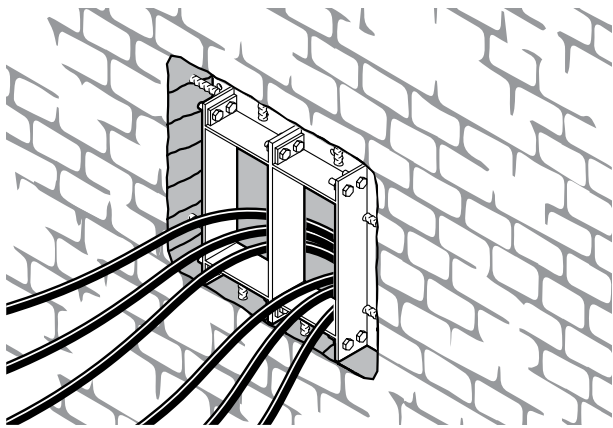
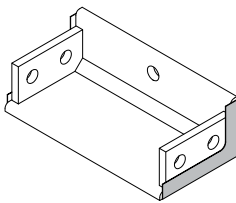


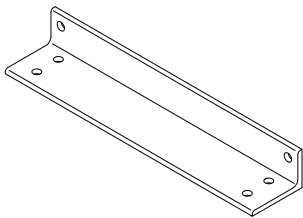
Installation instructions
Roxtec B frame



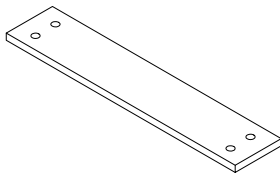
Components



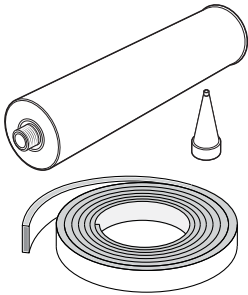
Short side including gasket



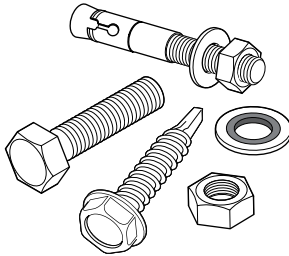
Long side



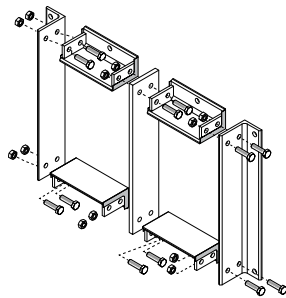
Midwall



Structure gasket and sealant (not included)



Structure fasteners (not included)



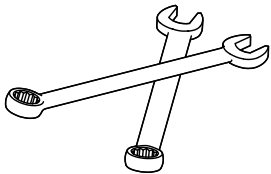
Example of Roxtec B frame size 6x2

Aperture

H= height.
W= width.
Z= frame size.
Measures in millimeters (mm).

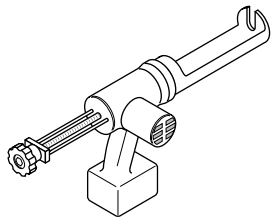
| Z | H | W | | | | | | | |
|---|-----|-----|-----|-----|-----|-----|-----|-----|------|
| 2 | 116 | x1 | x2 | x3 | x4 | x5 | x6 | x7 | x8 |
| 4 | 175 | | | | | | | | |
| 6 | 233 | | | | | | | | |
| 8 | 293 | | | | | | | | |
| | | 141 | 270 | 398 | 527 | 655 | 784 | 912 | 1041 |

Tools



Spanners

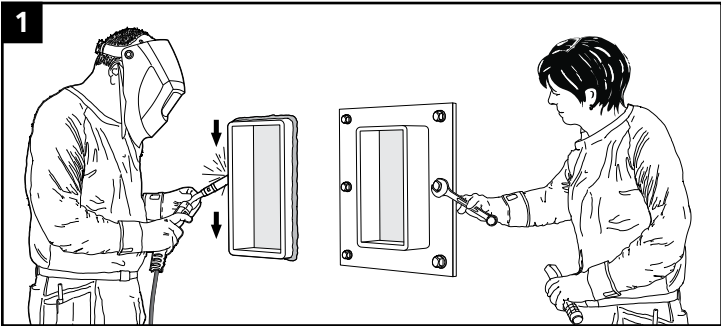
(not included)



Caulking gun

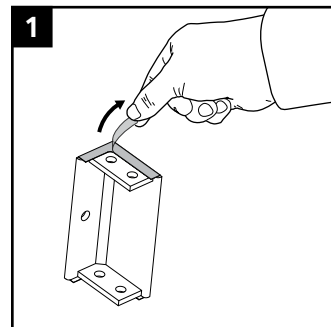
(Not included)

Frame installation

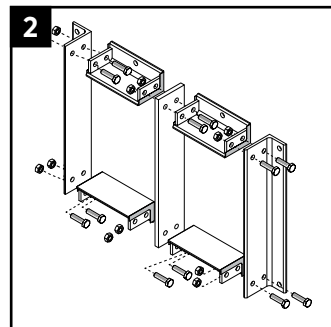


Attach the frame to the structure in line with Roxtec guideline documents.

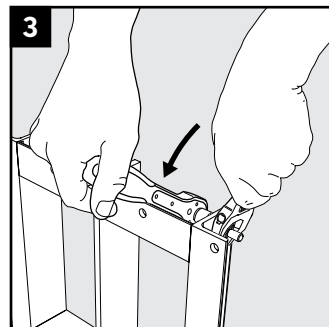
Installation – casting



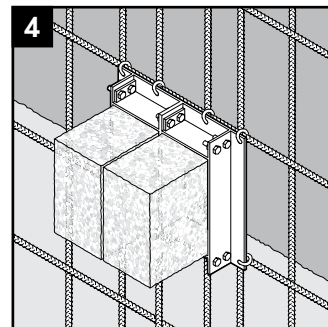
Make sure gaskets are attached on the short side components. Remove the foil.



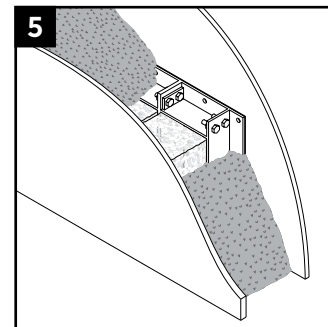
Arrange the frame parts.



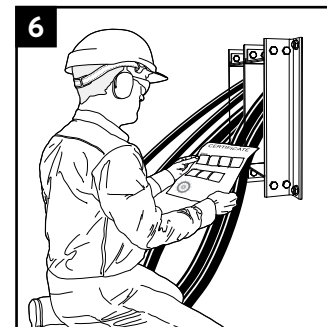
Tighten the fasteners firmly.



B frame attached to rebar with mold inserts.

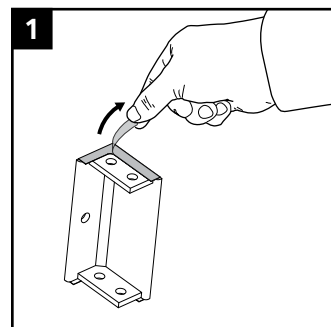


B frame cast in wall.

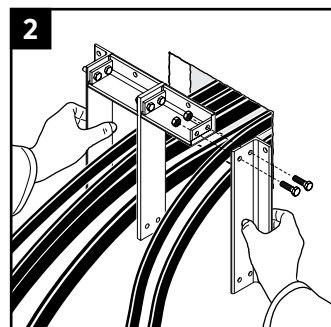


Check additional documentation, if applicable.

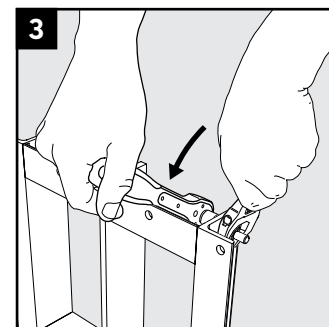
Installation – casting around existing cables



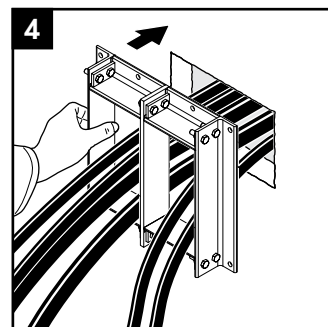
Make sure gaskets are attached on the short side components. Remove the foil.



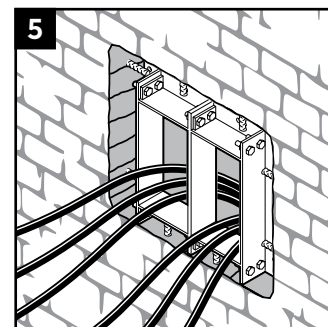
Assemble the frame around the cables.



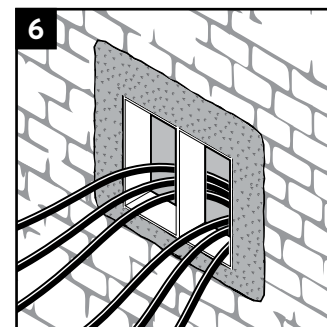
Tighten the fasteners firmly.



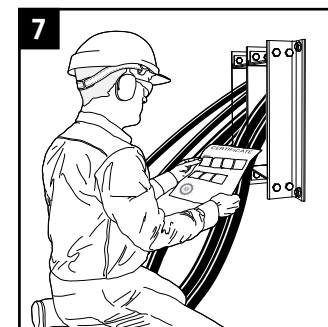
Place the frame against the structure.



B frame attached to rebar in wall.

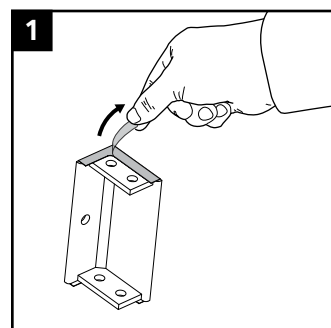


The opening finalized with concrete.

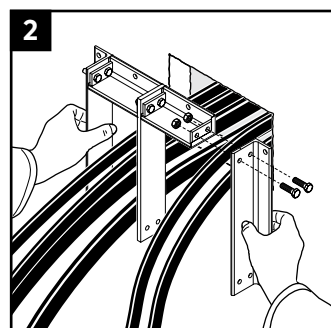


Check additional documentation, if applicable.

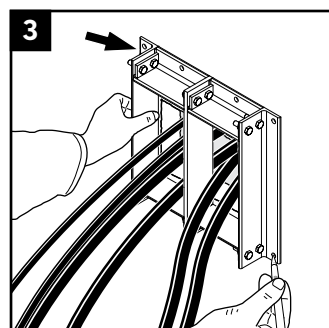
Installation – bolting around existing cables



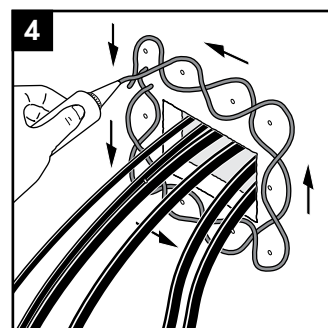
Make sure gaskets are attached on the short side components. Remove the foil.



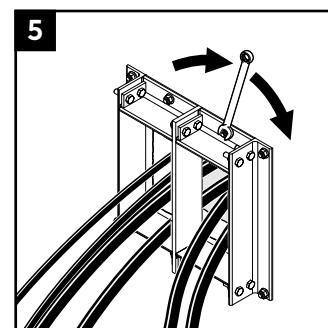
Assemble the frame around the cables.



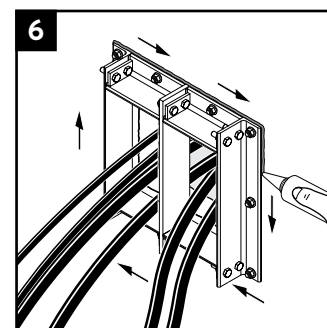
Mark the location of the fasteners using the frame.



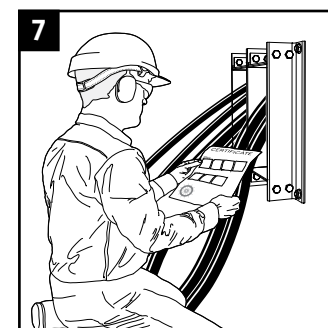
Apply sealant to the structure with a thickness not less than 6 mm.



Tighten the fasteners crosswise in small steps.



Apply a final string of sealant around the perimeter of the flange.



Check additional documentation, if applicable.

Note

- B frames can be bolted to rigid structures such as steel and wood. For bolting to concrete structures we recommend the Roxtec GKO frame or Roxtec GH FL100 frame.
- For optimum reliability, wait 24 hours or longer after installation before exposing the cables/pipes to strain or pressure.
- Additional sealing components are required for a complete solution. Follow the corresponding installation instructions.
- The structure and chosen sealing method have significant effect on the rating and type approval. Consult your local Roxtec representative.
- Approvals or certificates may include amendments or limitations related to this application.
- The latest version of this and related documents are found at roxtec.com.

Disclaimer

"The Roxtec cable and pipe entry sealing system ('the Roxtec system') is a modular-based system of sealing products consisting of different components. Each and every one of the components is necessary for the best performance of the Roxtec system. The Roxtec system has been certified to resist a number of different hazards. Any such certification, and the ability of the Roxtec system to resist such hazards, is dependent on all components that are installed as a part of the Roxtec system. Thus, the certification is not valid and does not apply unless all components installed as part of the Roxtec system are manufactured by or under license from Roxtec (authorized manufacturer). Roxtec gives no performance guarantee with respect to the Roxtec system, unless (i) all components installed as part of the Roxtec system are manufactured by an authorized manufacturer and (ii) the purchaser is in compliance with (a), and (b), below.

(a) During storage, the Roxtec system or part thereof, shall be kept indoors in its original packaging at room temperature.

(b) Installation shall be carried out in accordance with Roxtec installation instructions in effect from time to time.

The product information provided by Roxtec does not release the purchaser of the Roxtec system, or part thereof, from the obligation to independently

determine the suitability of the products for the intended process, installation and/or use.

Roxtec gives no guarantee for the Roxtec system or any part thereof and assumes no liability for any loss or damage whatsoever, whether direct, indirect, consequential, loss of profit or otherwise, occurred or caused by the Roxtec systems or installations containing components not manufactured by an authorized manufacturer and/or occurred or caused by the use of the Roxtec system in a manner or for an application other than for which the Roxtec system was designed or intended.

Roxtec expressly excludes any implied warranties of merchantability and fitness for a particular purpose and all other express or implied representations and warranties provided by statute or common law. User determines suitability of the Roxtec system for intended use and assumes all risk and liability in connection therewith. In no event shall Roxtec be liable for indirect, consequential, punitive, special, exemplary or incidental damages or losses.

The Roxtec products are offered and sold in accordance with the conditions of the Roxtec General Terms of Sales. The latest version of the Roxtec General Terms of Sales can be found and downloaded from roxtec.com/general-terms-of-sales."



Roxtec International AB
Box 540, 371 23 Karlskrona, SWEDEN
+46 455 36 67 00, info@roxtec.com
www.roxtec.com