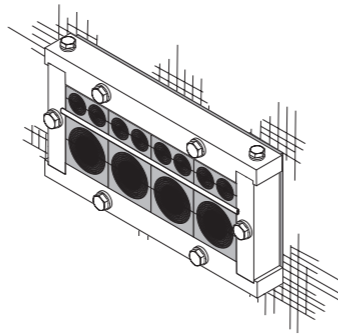


Installation instructions

Roxtec CRF frame with

Roxtec CM modules



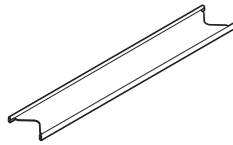
Tools

- Spanner (not included)

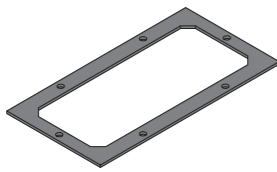
Note

- Cables/pipes shall go straight through the frame.
- Different approvals or certificates may include amendments or limitations related to this application.
- Always use the lubricant supplied with this product.
- For optimum reliability, wait 24 hours or longer after installation before exposing the cables/pipes to strain or pressure.
- The latest version of this and related documents are found at roxtec.com.

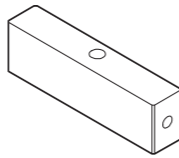
Components



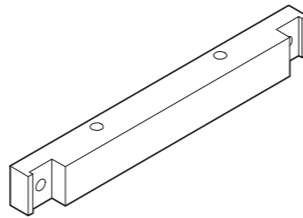
Stayplate



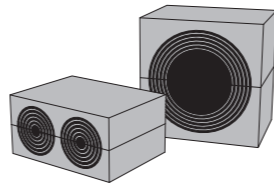
Gasket



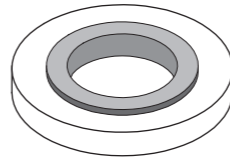
Short part



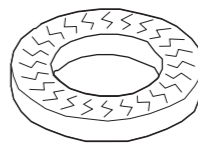
Long part



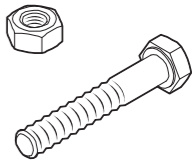
Roxtec CM modules



Sealing washer



NSK washer

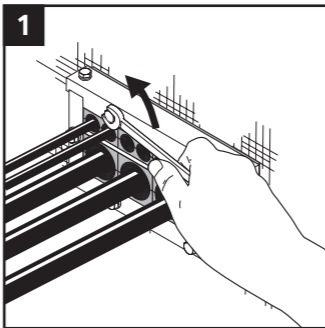


Fasteners

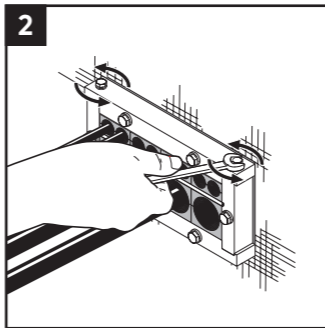
Disassembly



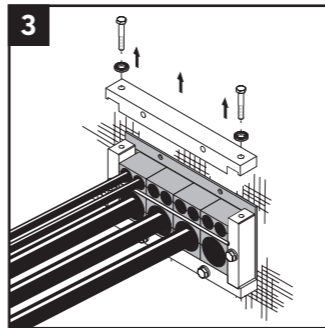
Roxtec Lubricant Blue



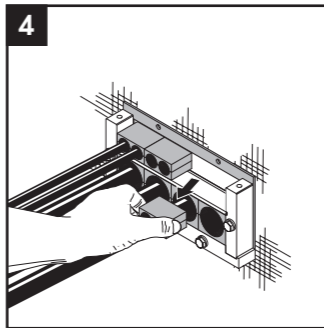
1
Untighten the two screws, which hold the upper long part of the frame to the structure, alternately.



2
Untighten the two screws for the upper long part alternately.



3
Remove the upper long part.



4
Remove the components.

Additional information

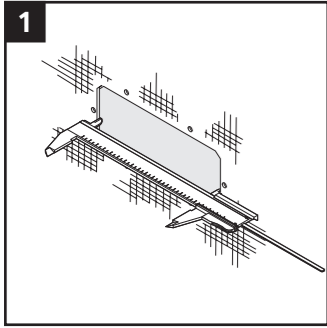


Additional information is available, such as drawings, apertures, videos, ratings and certificates.

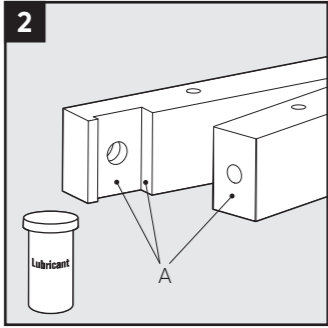


Scan QR code or visit roxtec.com for additional information.

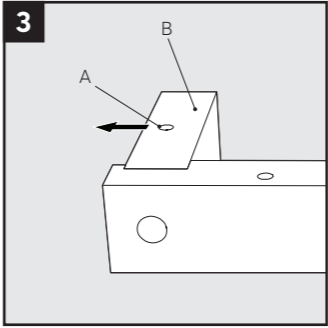
Installation



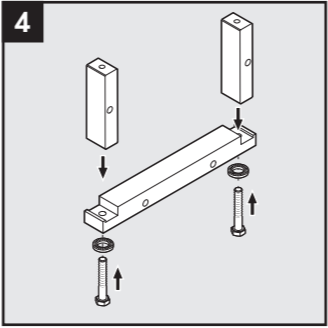
Make or verify an aperture.



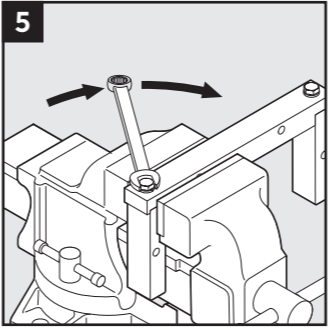
Lubricate the contact surfaces (A) of the frame parts with Roxtec Lubricant Blue.



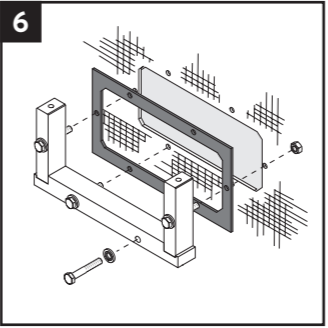
The mounting holes (A) on the short sides (B) shall face outwards.



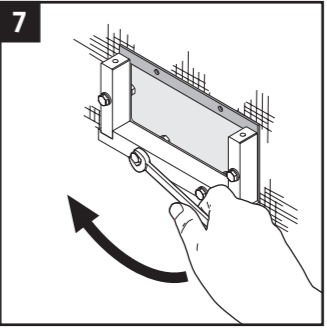
Assemble the lower long part and the two short parts with screws and NSK washers.



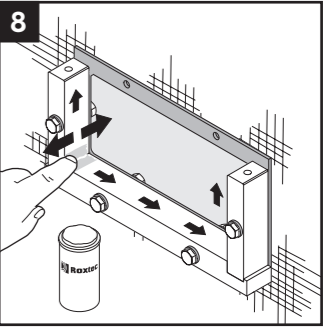
Tighten the two first screws. Recommended torque 20 Nm.



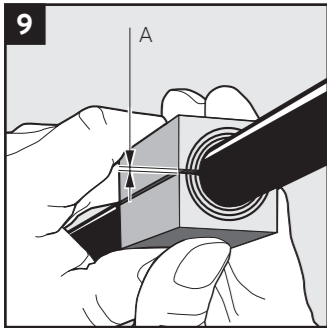
Fasten the frame and gasket to the structure using screws, nuts and sealing washers.



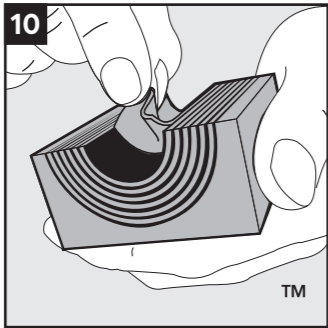
Fasten the frame loosely.



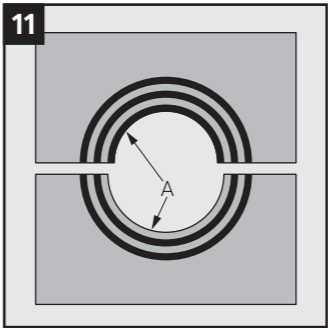
Lubricate the sealing surfaces of the frame, especially the corners.



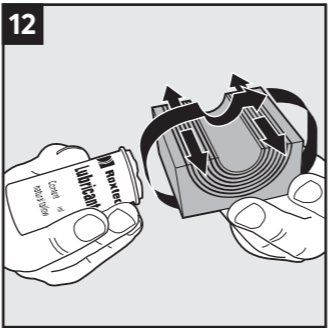
Achieve a 0.1-1.0 mm (A) gap between the two module halves when held against the cable/pipe.



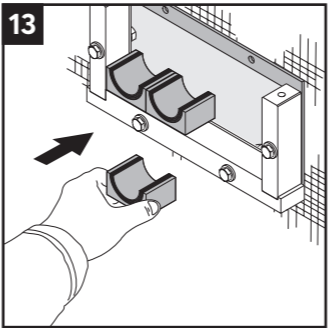
Adapt the modules by peeling off layers.



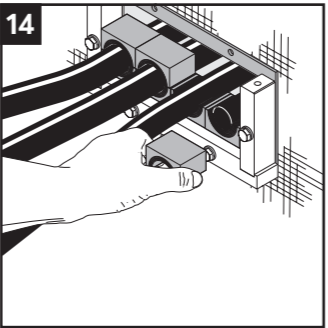
The number of layers may not differ (A) by more than one between the corresponding module halves.



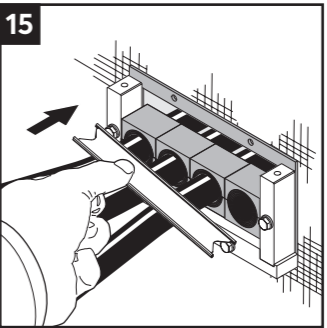
Lubricate all sealing surfaces on the modules.



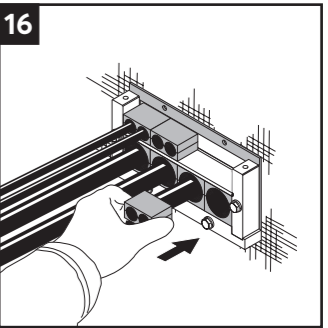
Insert the modules into the frame.



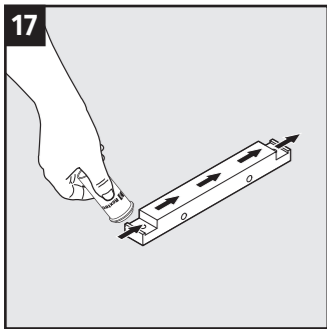
Route the cables.



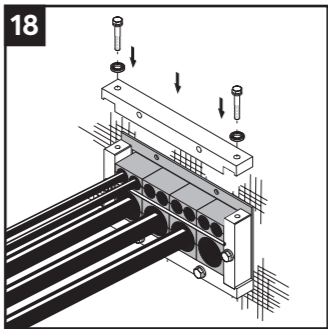
Insert the stayplate.



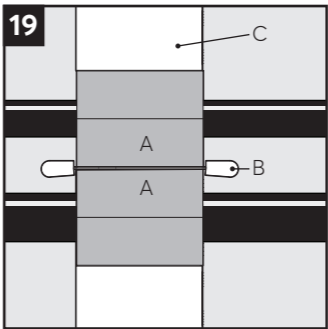
Continue to fill up the transit.



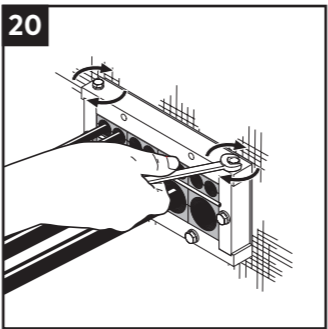
Lubricate the contact and sealing surface of the upper long part.



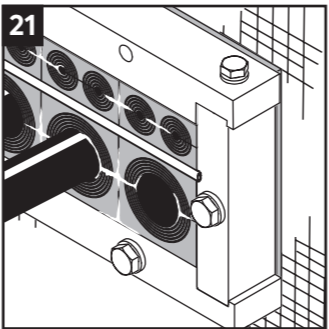
Attach the upper long part loosely to the short parts of the frame using screws and NSK washers.



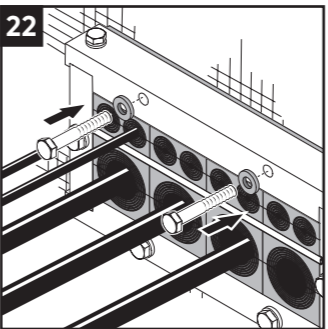
The modules (A) shall be secured within the stayplate (B) edges.



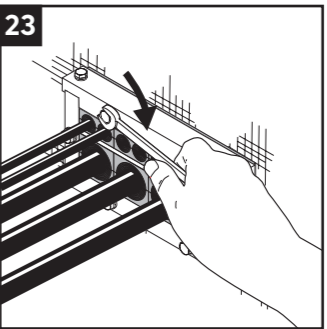
Tighten the two screws for the upper long part alternately. Recommended torque 20 Nm.



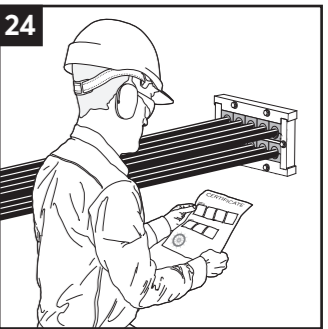
Protruding lubricant indicates a tight seal.



Insert the final two screws with sealing washers.



Tighten the screws, which hold the frame to the structure, alternately. Recommended torque 20 Nm.



Check additional documentation, if applicable.

After installation inspection

- Are all screws tightened?
- Are NSK washers and sealing washers correctly placed?
- Is the combined height of modules correct according to the frame packing height?
- Is the stayplate in place?
- Is there visible protruding lubricant?

Disclaimer

"The Roxtec cable and pipe entry sealing system ('the Roxtec system') is a modular-based system of sealing products consisting of different components. Each and every one of the components is necessary for the best performance of the Roxtec system. The Roxtec system has been certified to resist a number of different hazards. Any such certification, and the ability of the Roxtec system to resist such hazards, is dependent on all components that are installed as a part of the Roxtec system. Thus, the certification is not valid and does not apply unless all components installed as part of the Roxtec system are manufactured by or under license from Roxtec ('authorized manufacturer'). Roxtec gives no performance guarantee with respect to the Roxtec system, unless (I) all components installed as part of the Roxtec system are manufactured by an authorized manufacturer and (II) the purchaser is in compliance with (a), and (b), below.

(a) During storage, the Roxtec system or part thereof, shall be kept indoors in its original packaging at room temperature.

(b) Installation shall be carried out in accordance with Roxtec installation instructions in effect from time to time.

The product information provided by Roxtec does not release the purchaser of the Roxtec system, or part thereof, from the obligation to independently

determine the suitability of the products for the intended process, installation and/or use.

Roxtec gives no guarantee for the Roxtec system or any part thereof and assumes no liability for any loss or damage whatsoever, whether direct, indirect, consequential, loss of profit or otherwise, occurred or caused by the Roxtec systems or installations containing components not manufactured by an authorized manufacturer and/or occurred or caused by the use of the Roxtec system in a manner or for an application other than for which the Roxtec system was designed or intended.

Roxtec expressly excludes any implied warranties of merchantability and fitness for a particular purpose and all other express or implied representations and warranties provided by statute or common law. User determines suitability of the Roxtec system for intended use and assumes all risk and liability in connection therewith. In no event shall Roxtec be liable for indirect, consequential, punitive, special, exemplary or incidental damages or losses.

The Roxtec products are offered and sold in accordance with the conditions of the Roxtec General Terms of Sales. The latest version of the Roxtec General Terms of Sales can be found and downloaded from roxtec.com/general-terms-of-sales."



Roxtec International AB
Box 540, 371 23 Karlskrona, SWEDEN
+46 455 36 67 00, info@roxtec.com
www.roxtec.com