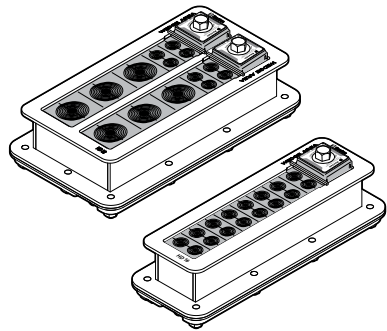




Installation instructions

Roxtec HD 16 and HD 32 transits



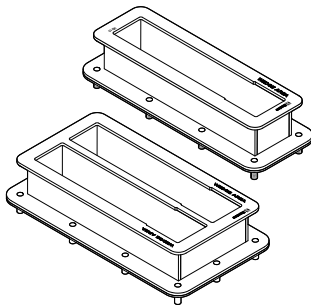
After installation inspection

- Is the wedge correctly oriented?
- Is there visible protruding lubricant?
- Is the combined height of modules correct according to the frame packing height?
- Are all modules placed correctly and fully inserted after compression?

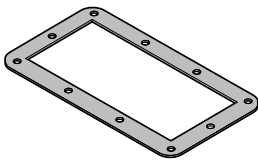
Note

- For optimum reliability, wait 24 hours or longer after installation before exposing the cables/pipes to strain or pressure.
- Cables/pipes shall be parallel to the sleeve/aperture.
- Cable/pipe with a considerable weight needs to be supported to prevent damage or subsidence to the seal.
- Approvals or certificates may include amendments or limitations related to this application.
- A seal with core is spare capacity.
- The latest version of this and related documents are found at roxtec.com.

Components



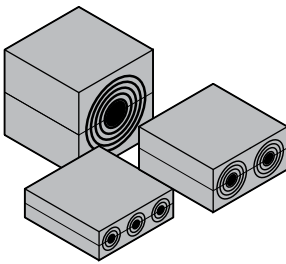
Roxtec HD frame



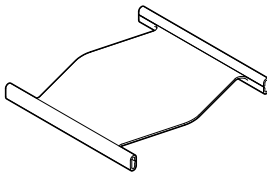
Gasket



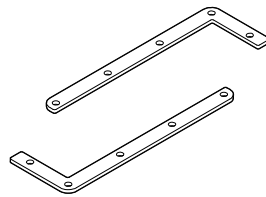
Fasteners



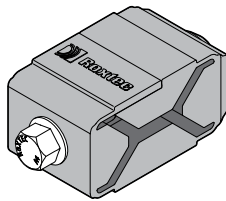
Roxtec HD modules



Roxtec HD stayplates



Counter frame

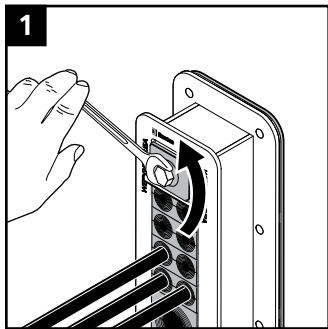


Compression unit

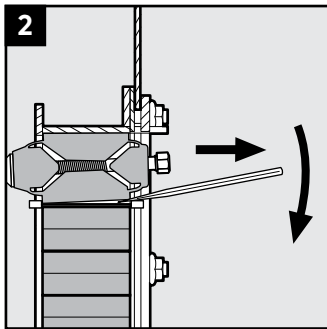


Roxtec Lubricant

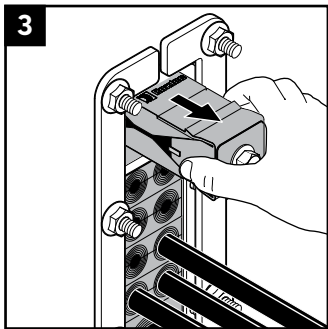
Disassembly and reinstallation



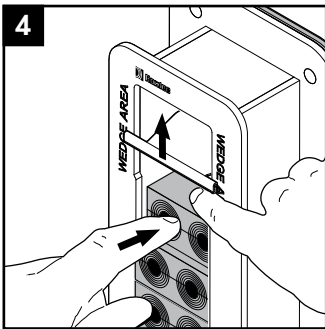
Untighten the screw of the compression unit.



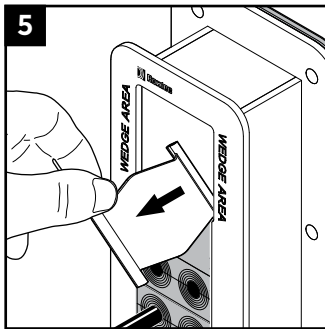
Insert a flat tool between the compression unit and the stayplate to simplify removal of the compression unit.



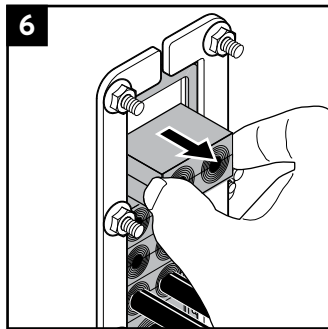
Remove the compression unit.



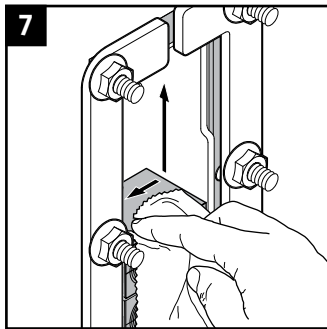
Lift the stayplate and push out the upper module from the front side.



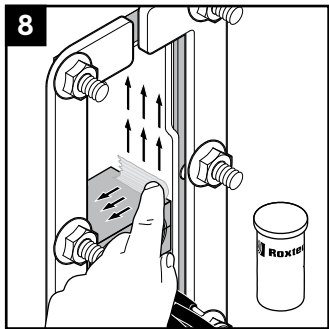
Remove the stayplate.



Continue to remove the modules by pulling them out from the backside of the frame.

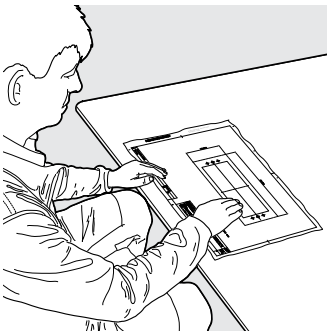


Clean the exposed surfaces.



Lubricate the exposed surfaces, especially in the corners. Continue the reinstallation

Additional information



Scan QR code or visit roxtec.com for additional information such as drawings, aperture, videos, ratings and certificates.

Tools

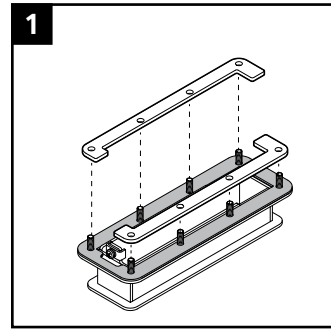
- 10 mm and 13 mm spanner (not included)
- Roxtec pre-compression tool (not included)

Disclaimer

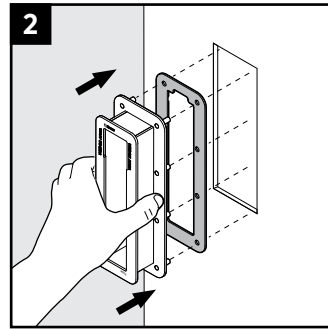
"The Roxtec cable and pipe entry sealing system ('the Roxtec system') is a modular-based system of sealing products consisting of different components. Each and every one of the components is necessary for the best performance of the Roxtec system. The Roxtec system has been certified to resist a number of different hazards. Any such certification, and the ability of the Roxtec system to resist such hazards, is dependent on all components that are installed as a part of the Roxtec system. Thus, the certification is not valid and does not apply unless all components installed as part of the Roxtec system are manufactured by or under license from Roxtec ('authorized manufacturer'). Roxtec gives no performance guarantee with respect to the Roxtec system, unless (i) all components installed as part of the Roxtec system are manufactured by an authorized manufacturer and (ii) the purchaser is in compliance with (a), and (b), below.
(a) During storage, the Roxtec system or part thereof, shall be kept indoors in its original packaging at room temperature.
(b) Installation shall be carried out in accordance with Roxtec installation instructions in effect from time to time.
The product information provided by Roxtec does not release the purchaser of the Roxtec system, or part thereof, from the obligation to independently

determine the suitability of the products for the intended process, installation and/or use.
Roxtec gives no guarantee for the Roxtec system or any part thereof and assumes no liability for any loss or damage whatsoever, whether direct, indirect, consequential, loss of profit or otherwise, occurred or caused by the Roxtec systems or installations containing components not manufactured by an authorized manufacturer and/or occurred or caused by the use of the Roxtec system in a manner or for an application other than for which the Roxtec system was designed or intended.
Roxtec expressly excludes any implied warranties of merchantability and fitness for a particular purpose and all other express or implied representations and warranties provided by statute or common law. User determines suitability of the Roxtec system for intended use and assumes all risk and liability in connection therewith. In no event shall Roxtec be liable for indirect, consequential, punitive, special, exemplary or incidental damages or losses. The Roxtec products are offered and sold in accordance with the conditions of the Roxtec General Terms of Sales. The latest version of the Roxtec General Terms of Sales can be found and downloaded from roxtec.com/general-terms-of-sales."

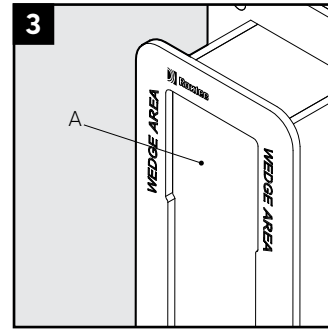
Installation



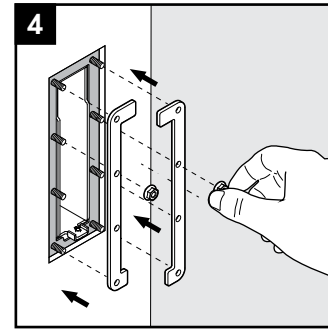
Remove the two parts of the counter frame.



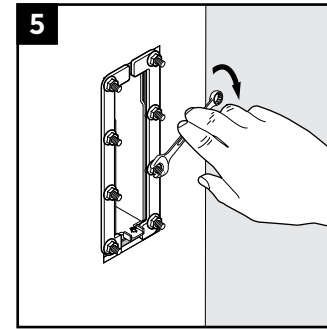
Insert the frame from the outside of the cabinet with the gasket in between.



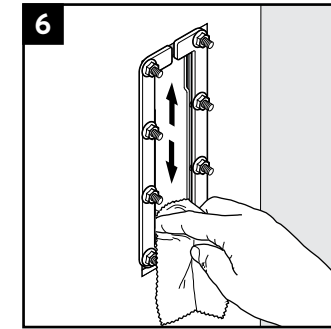
Observe the intended wedge area (A) without stopping edges.



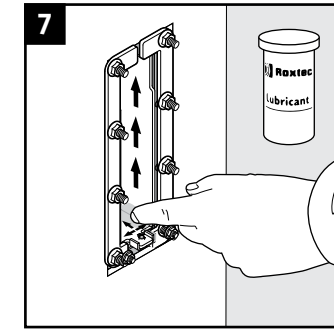
Attach the two parts of the counter frame from the inside of the cabinet.



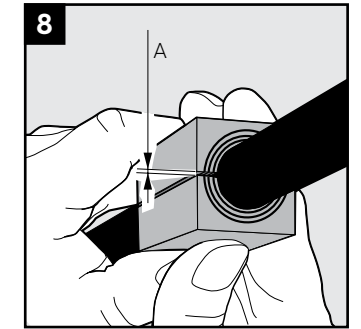
Tighten the nuts crosswise in small steps. Recommended torque 4 Nm.



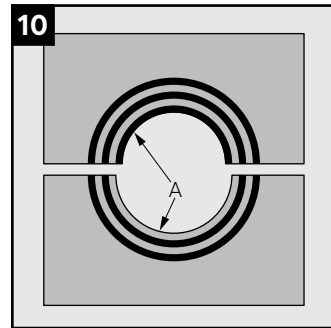
Clean the frame.



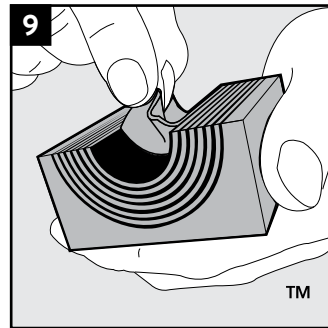
Lubricate the sealing surfaces of the frame. Lubricate the corners thoroughly.



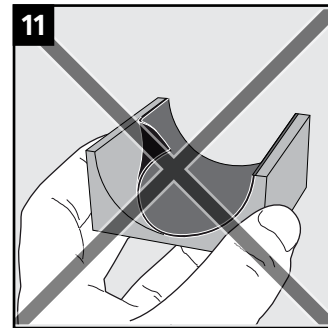
Achieve a gap of 0.1-1.0 mm (A) between the module halves by peeling off layers.



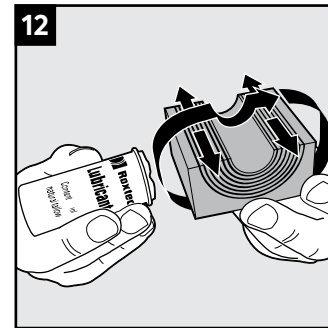
The number of layers may not differ (A) by more than one between the corresponding module halves.



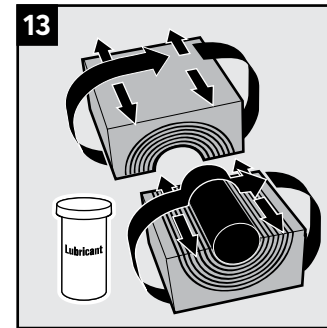
Adapt the modules by peeling off layers.



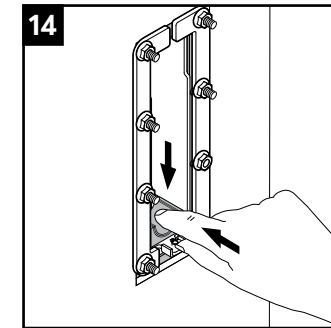
Do not remove the last layer.



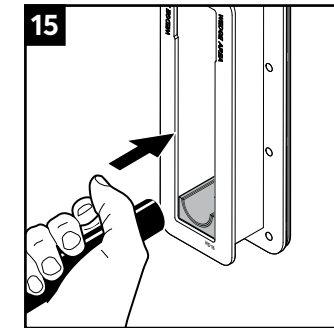
Lubricate the sealing surfaces of all modules with Roxtec Lubricant.



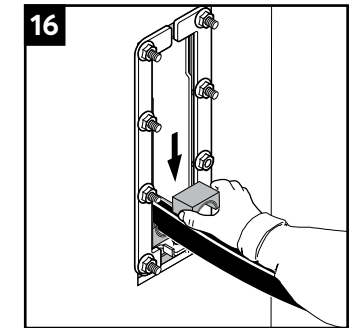
Lubricate the sealing surfaces of the spare modules. Do not remove the core.



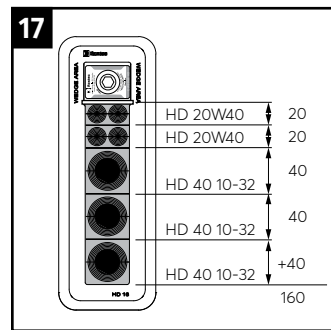
Insert the modules from the back side of the transit according to the packing plan. Push the module half against the stopping edge.



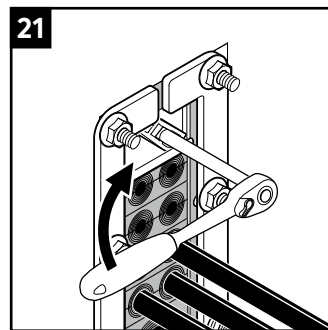
Insert cables/pipes straight through the frame.



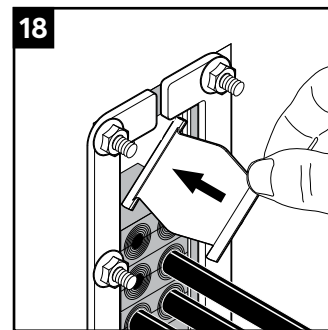
Place the corresponding module half on top. Continue to fill the transit considering your packing plan.



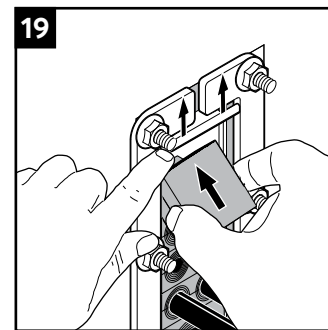
Consider the packing height of the frame. This is an example of a packing plan.



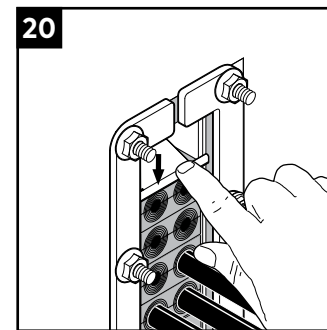
Use a Roxtec pre-compression tool to make space for the compression units if required.



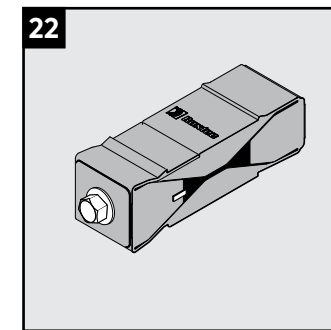
Before inserting the final module, insert a stayplate.



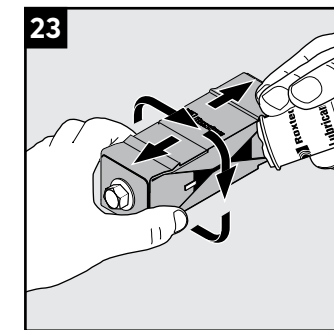
Lift the upper stayplate and insert the last module underneath it.



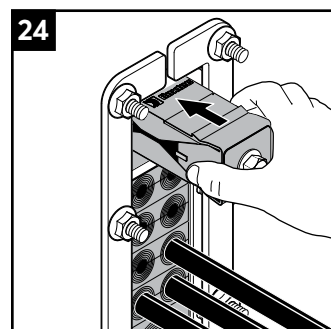
Drop the stayplate on top of the last row of modules.



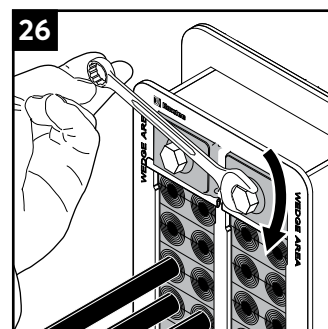
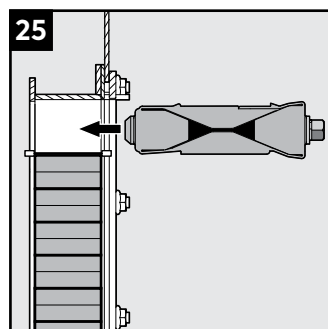
Ensure that the compression unit is fully uncompressed by untightening the screw before inserting it.



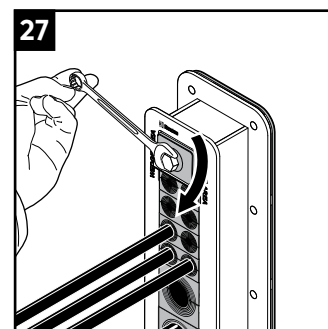
Lubricate the compression units on all sealing sides with Roxtec Lubricant.



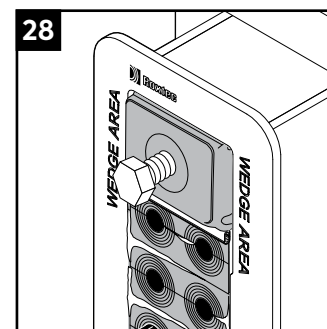
Insert the compression units from the inside of the openings until stop. The compression units can be placed with the screwhead facing either into or out of the opening.



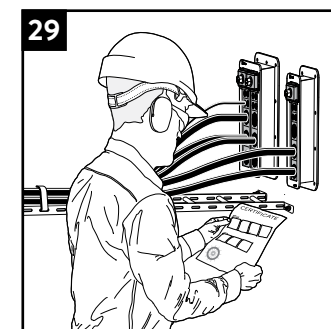
HD 32: Do not tighten the first compression unit until the second compression unit is inserted.



Tighten the screw of the compression unit until full stop, approx. 20 Nm.



Visible excess lubricant is a sign of good compression.



Check additional documentation, if applicable.



Roxtec International AB
Box 540, 371 23 Karlskrona, SWEDEN
+46 455 36 67 00, info@roxtec.com
www.roxtec.com