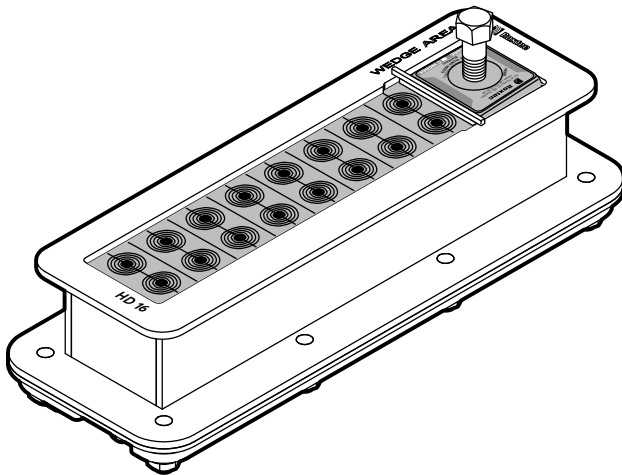
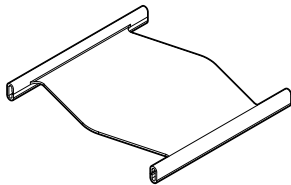


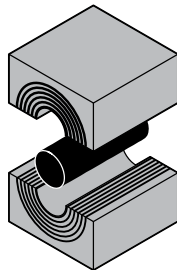
Installation instructions Roxtec HD 16 with Roxtec HD modules



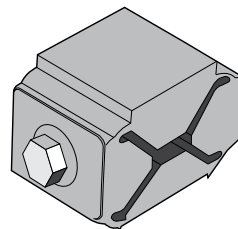
Components



Stayplate



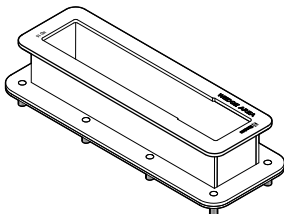
HD Modules



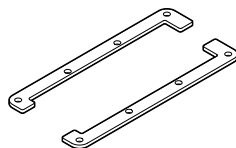
Compression unit
C Wedge HD



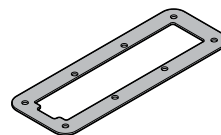
Lubricant



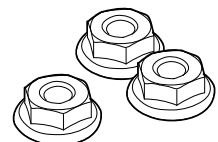
HD 16 frame



Counter frame



Gasket



Fasteners

Adaptable HD modules

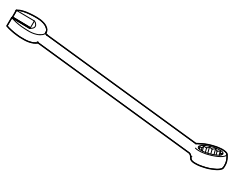
Measures in millimeters (mm)

Module	Number of cables	For cable diameter
HD 15w40	3	0+4.0-9.5
HD 20	1	0+4.0-13.5
HD 20w40	2	0+4.0-15.5
HD 30w40	1	0+10.0-24.0
HD 40	1	0+21.5-33.5
HD 40 10-31	1	0+9.5-31.5

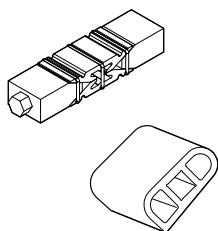
Solid compensation modules HD

Module
HD 5w40/0
HD 10w40/0

Tools



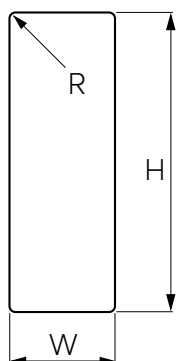
10 mm and 13 mm spanner
(not included)



Roxtec
installation tools
(not included)

Aperture dimensions in cabinet

Max wall/cabinet thickness: 4 mm.

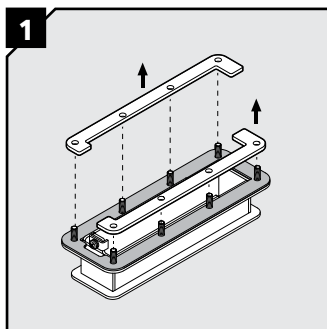


R: max 3.

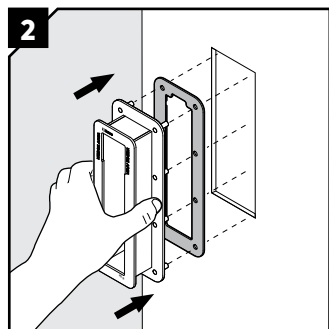
H: 216 +1.0
 -0.5

W: 64 +1.0
 -0.5

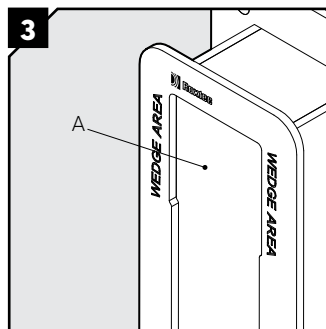
Installation of HD 16 frame



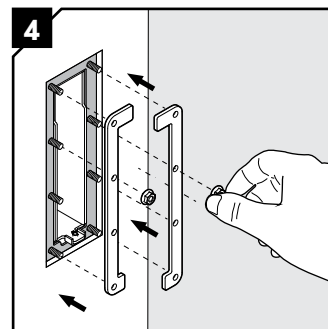
Remove the two parts of the counter frame.



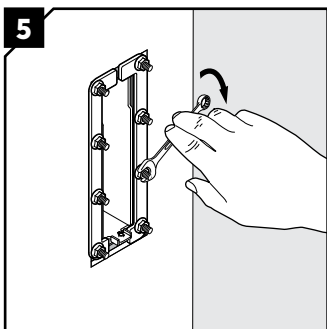
Insert the HD 16 frame from the outside of the cabinet. Ensure that the gasket is placed between the frame and the cabinet.



Observe the intended wedge area (A) without stopping edges.

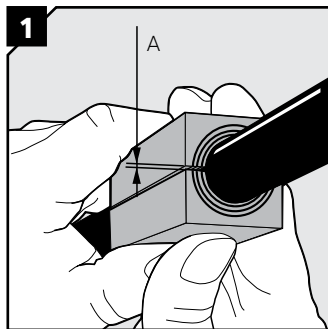


Attach the two parts of the counter frame from the inside of the cabinet.

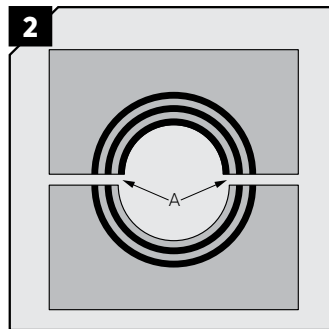


Tighten the nuts crosswise in small steps. Recommended torque 4 Nm. Do not overtighten the nuts.

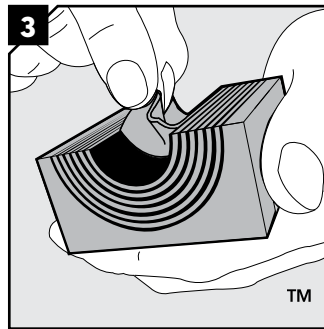
Installation of Roxtec HD modules



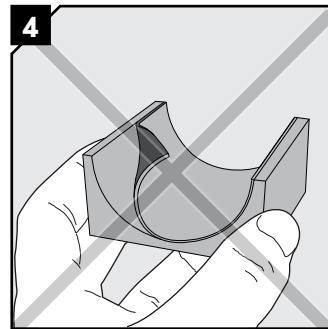
Achieve a gap of 0.1-1.0 mm (A) between the module halves by peeling off layers.



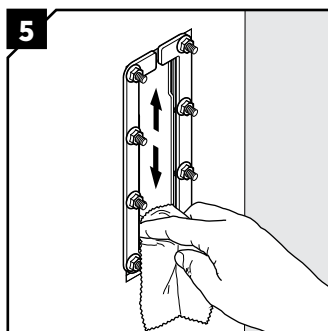
The number of layers may not differ (A) by more than one between the corresponding module halves.



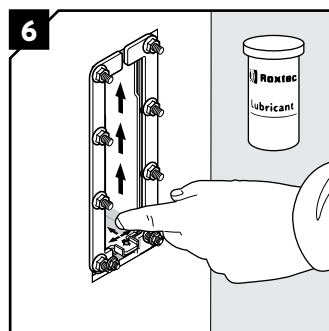
Adapt the layers that are in contact with the cable jacket.



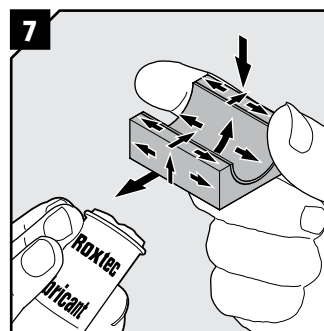
Do not remove the last layer.



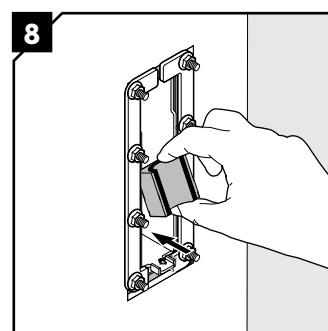
Make sure that the inside surfaces of the frame halves are free from dirt or dust.



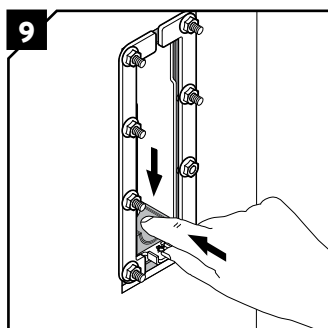
Lubricate the inside surfaces of the frame all around with Roxtec Lubricant, especially into the corners.



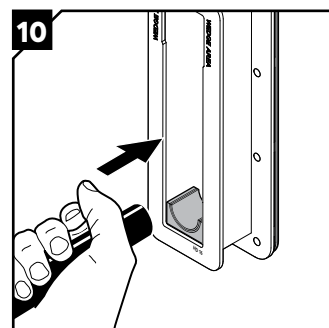
Lubricate all modules thoroughly with Roxtec Lubricant, both the inside and the outside surfaces.



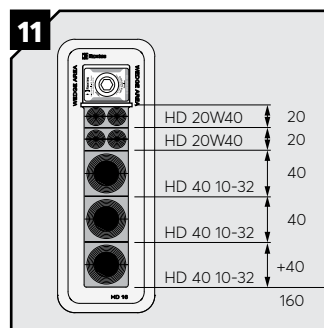
Insert the modules from the back side of the transit according to your installation plan. Start with the largest modules.



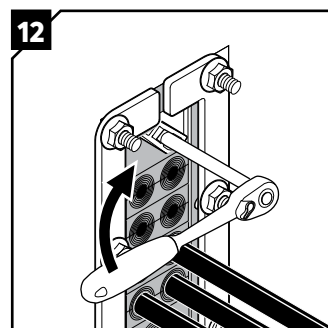
Push the modules in place. Ensure that the module rests against the stopping edge at the front.



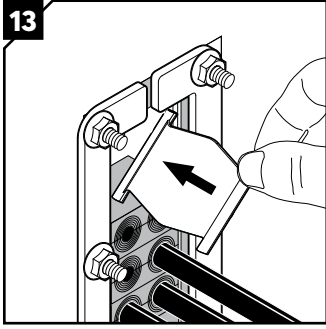
Insert the cables through the frame.



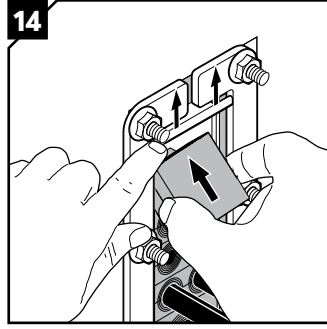
Consider the packing height of the frame. This is an example of a packing plan.



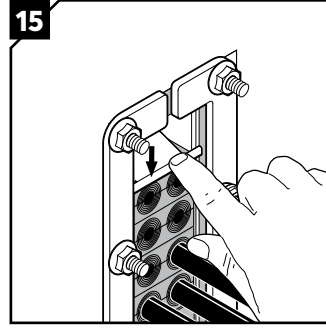
Use a Roxtec pre-compression tool to make space for the compression units if required.



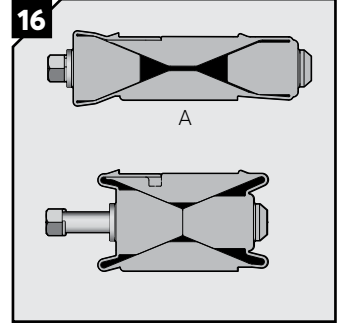
Before inserting the final module, insert a stayplate.



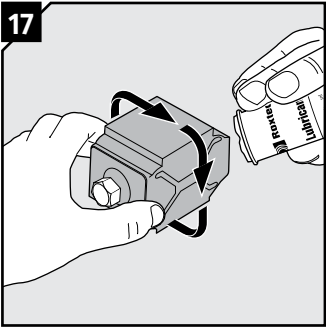
Lift the upper stayplate and insert the last module underneath it.



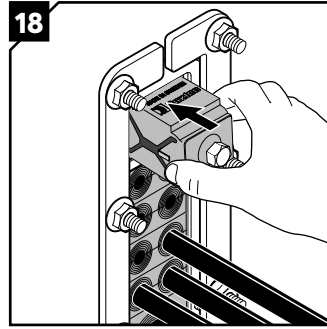
Drop the stayplate on top of the last row of modules.



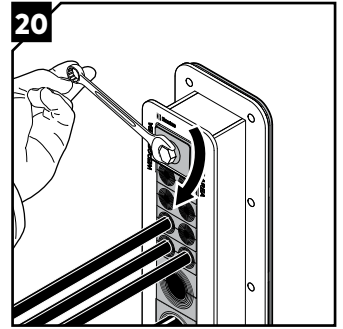
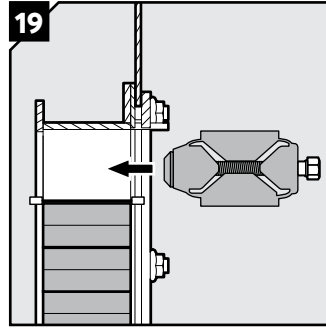
Ensure that the compression unit is fully uncompressed (A) by untightening the screw before inserting it.



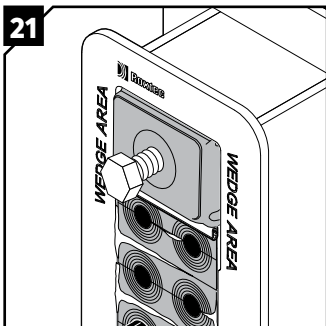
Lubricate the compression units on all sealing sides with Roxtec Lubricant.



Insert the compression units from the inside of the openings until stop. The compression units can be placed with the screwhead facing either into or out of the opening.

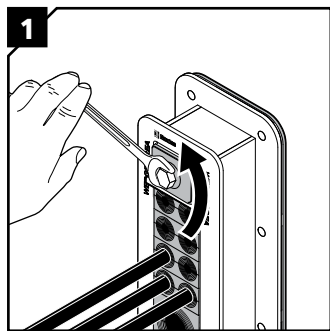


Tighten the screw of the compression unit until full stop, approx. 20 Nm.

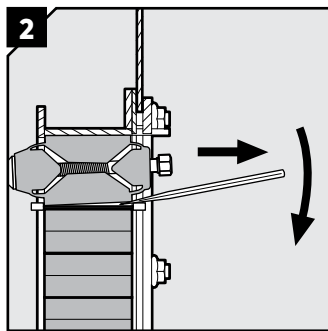


Visible excess lubricant is a sign of good compression. Make sure that all modules are placed correctly and fully inserted after compression.

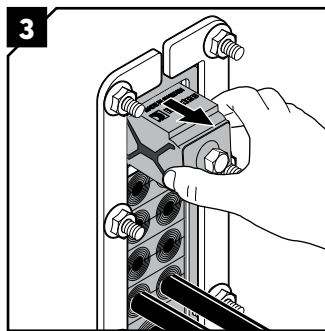
Disassembly and reinstallation



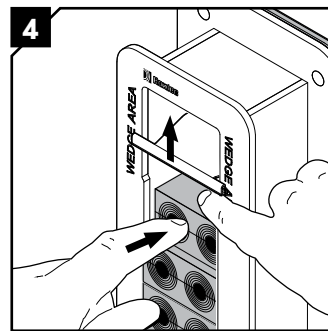
Untighten the screw of the compression unit.



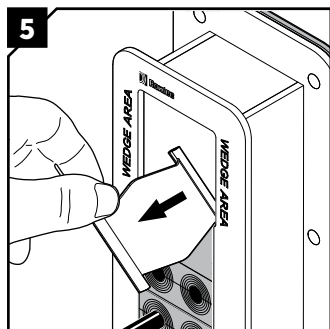
Insert a flat tool between the compression unit and the stayplate to simplify removal of the compression unit.



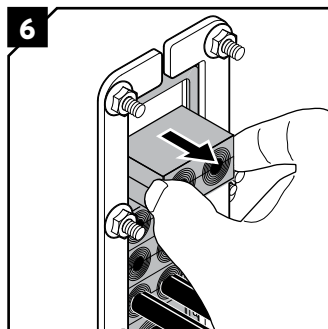
Remove the compression unit.



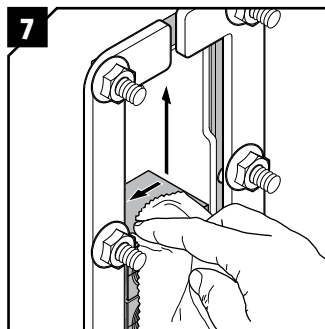
Lift the stayplate and push out the upper module from the front side.



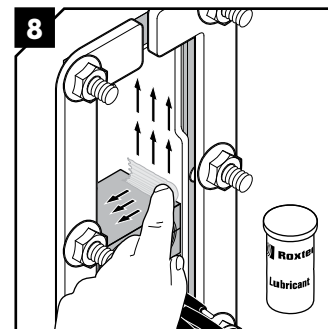
Remove the stayplate.



Continue to remove the modules by pulling them out from the backside of the frame.



Clean the exposed surfaces.



Lubricate the exposed surfaces, especially in the corners. Continue the reinstallation.

Note

- An incorrectly adapted module shall be replaced (layers shall not be reused).
- Wait 24 hours or longer after installation before exposing the cables/pipes to strain or pressure.
- To be used with: Roxtec HD components.
- Cables/pipes shall go straight through the frame.
- Approvals or certificates may include amendments or limitations related to this application.
- The latest version of this and related documents are found at roxtec.com.

DISCLAIMER

"The Roxtec cable entry sealing system ("the Roxtec system") is a modular-based system of sealing products consisting of different components. Each and every one of the components is necessary for the best performance of the Roxtec system. The Roxtec system has been certified to resist a number of different hazards. Any such certification, and the ability of the Roxtec system to resist such hazards, is dependent on all components that are installed as a part of the Roxtec system. Thus, the certification is not valid and does not apply unless all components installed as part of the Roxtec system are manufactured by or under license from Roxtec ("authorized manufacturer"). Roxtec gives no performance guarantee with respect to the Roxtec system, unless (I) all components installed as part of the Roxtec system are manufactured by an authorized manufacturer and (II) the purchaser is in compliance with (a), and (b), below.

(a) During storage, the Roxtec system or part thereof, shall be kept indoors in its original packaging at room temperature.

(b) Installation shall be carried out in accordance with Roxtec installation instructions in effect from time to time.

The product information provided by Roxtec does not release the purchaser of the Roxtec system, or part thereof, from the obligation to independently determine the suitability of the products for the intended process, installation and/or use.

Roxtec gives no guarantee for the Roxtec system or any part thereof and assumes no liability for any loss or damage whatsoever, whether direct, indirect, consequential, loss of profit or otherwise, occurred or caused by the Roxtec systems or installations containing components not manufactured by an authorized manufacturer and/or occurred or caused by the use of the Roxtec system in a manner or for an application other than for which the Roxtec system was designed or intended.

Roxtec expressly excludes any implied warranties of merchantability and fitness for a particular purpose and all other express or implied representations and warranties provided by statute or common law. User determines suitability of the Roxtec system for intended use and assumes all risk and liability in connection therewith. In no event shall Roxtec be liable for indirect, consequential, punitive, special, exemplary or incidental damages or losses."



Roxtec International AB
 Box 540, 371 23 Karlskrona, SWEDEN
 PHONE +46 455 36 67 00, FAX +46 455 820 12
 EMAIL info@roxtec.com, www.roxtec.com