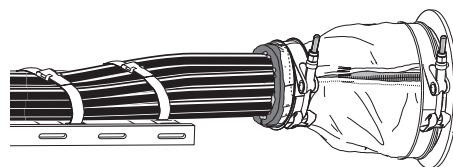




## Installation instructions GK Multi-cable fire collar

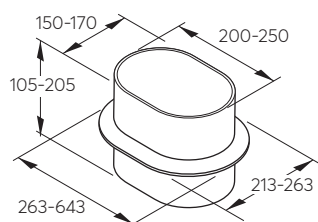


### Safety information

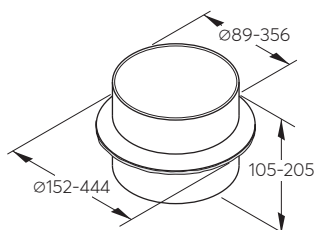
Roxtec recommends that all installations are performed without facility operation. Follow national regulations and installation codes. Any action affecting the routed service should be performed according to manufacturer recommendations.

### Pipe sleeve

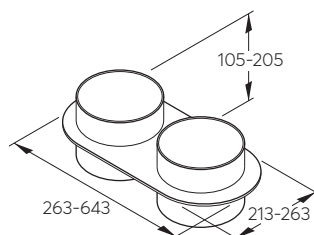
Suitable sleeve dimensions.  
Measures in millimeters (mm).



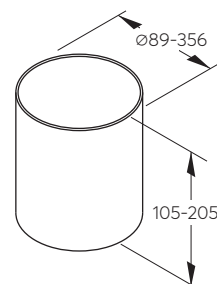
Oval sleeve



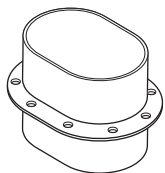
Round sleeve



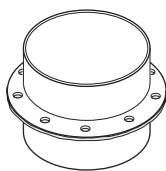
Double round or oval sleeve



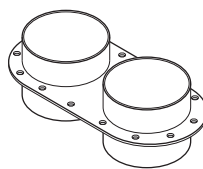
Sleeve without flange



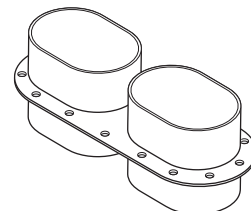
Oval sleeve for bolting



Round sleeve for bolting

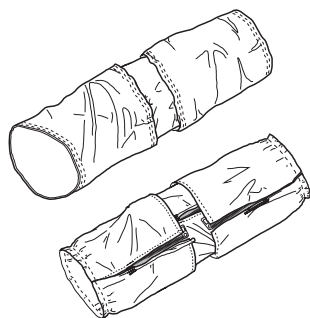


Double round sleeve for bolting

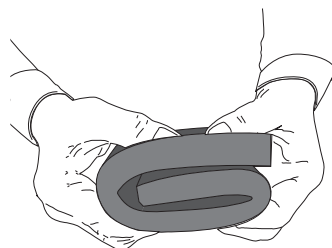


Double oval sleeve for bolting

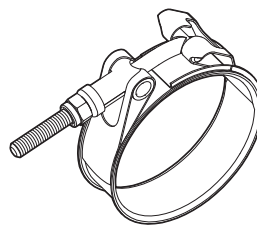
## Components



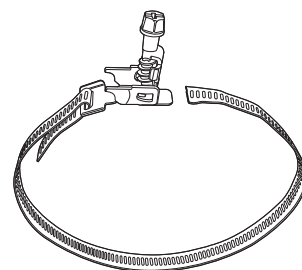
Fiberglass cloth  
1 pc.



Sealing strip  
2 pcs.

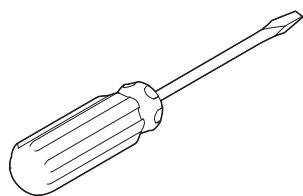


Hose clamp  
4 pcs.

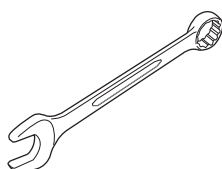


Metal cable tie

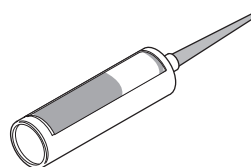
## Tools



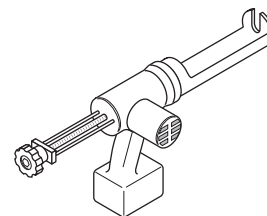
Screwdriver  
(Not included)



Wrench  
(Not included)



Fire rated smoke sealant  
(Not included)



Caulking gun (not included)

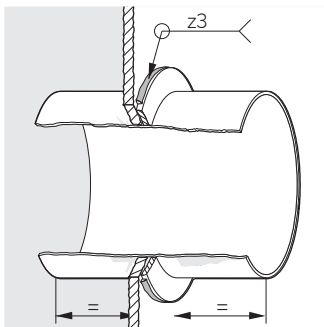
## Selection guide

A	B
GK MC FC KIT 89	84 - 89
GK MC FC KIT 127	107 - 127
GK MC FC KIT 140	120 - 140
GK MC FC KIT 168	138 - 168
GK MC FC KIT 219	179 - 219
GK MC FC KIT 244	204 - 244
GK MC FC KIT 273	233 - 273
GK MC FC KIT 324	274 - 324
GK MC FC KIT 356	306 - 356

C	D
GK MC FC KIT 200x150	531 - 571
GK MC FC KIT 200x170	554 - 594
GK MC FC KIT 250x170	654 - 694

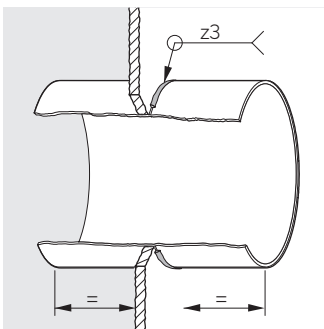
- A. Installation kits for round sleeves  
 B. Fits sleeve outer diameter Min - Max (mm)  
 C. Installation kits for oval sleeves  
 D. Fits sleeve outer circumference Min - Max (mm)

## Installation of sleeve with flange



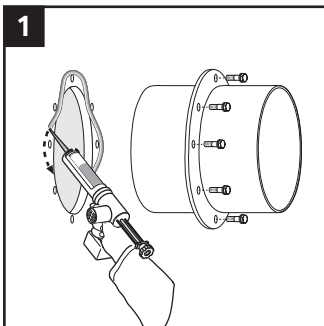
Center the sleeve and apply a continuous gas-tight weld all around.  
Max heat input 1.5 KJ/mm.

## Installation of sleeve without flange

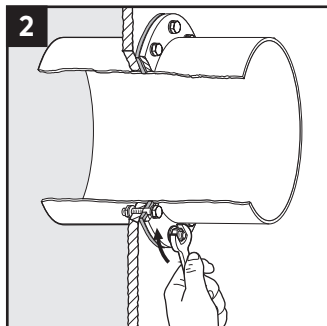


Center the sleeve and apply a continuous gas-tight weld all around.  
Max heat input 1.5 KJ/mm.

## Installation of sleeve with bolted flange

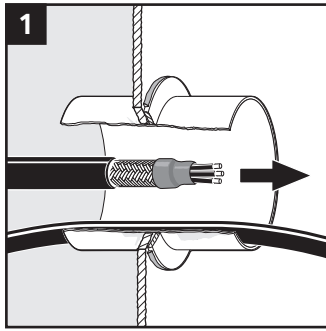


Center the sleeve. Apply a smoke seal between the flange and the structure.

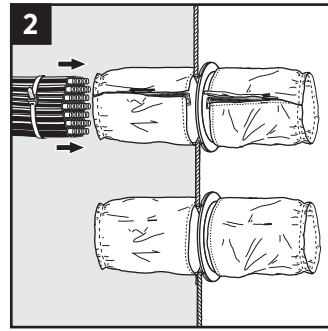


Fasten the sleeve to the structure.

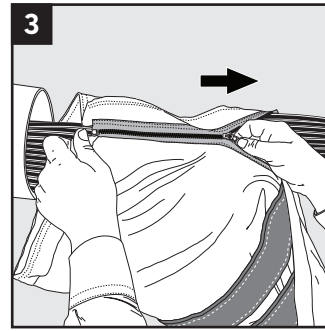
## Installation



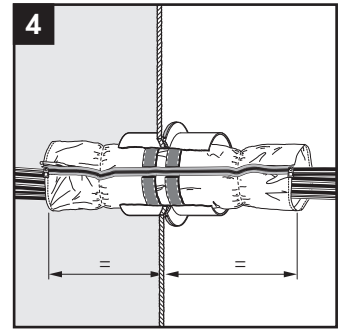
Route the cables.



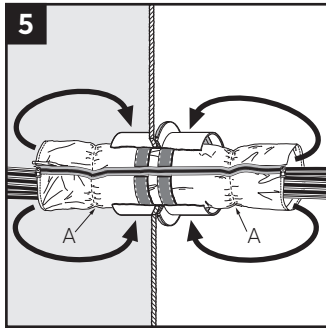
When the cable density is high, mount the fiberglass cloth before routing the cables.



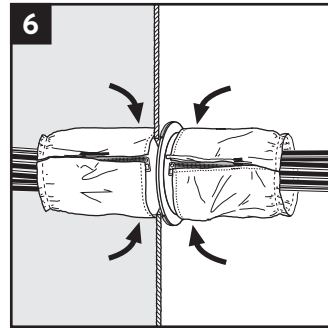
Open the zipper on the fiberglass cloth. Wrap the cloth around the cables with the intumescent material outwards. Close the zipper.



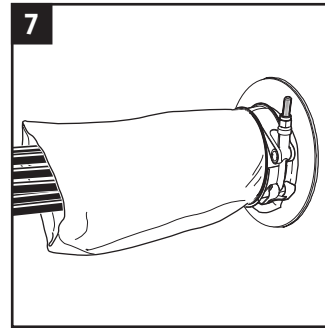
Pull the fiberglass cloth through the sleeve and make sure it is centered.



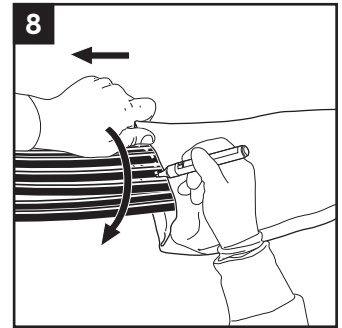
Fold back the fiberglass cloth at the seam (A) on both sides.



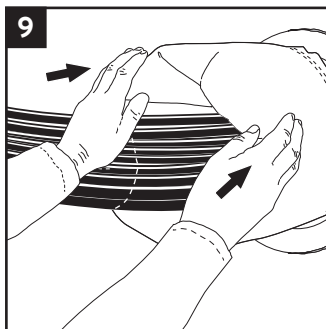
The ends of the fiberglass cloth mounted onto the sleeve.



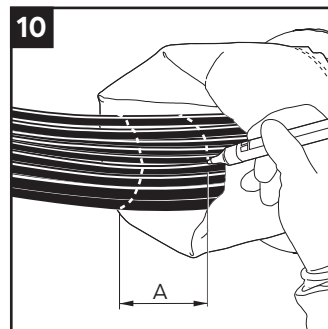
Secure both ends with a strap or clamp.



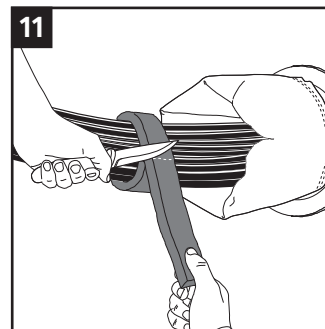
Pull out the fiberglass cloth. Mark the cables with a pen at the edge of the cloth.



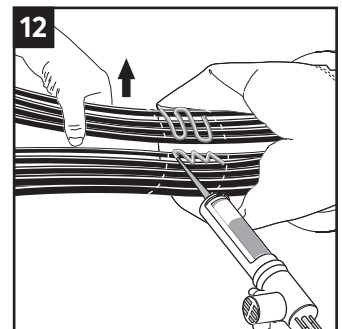
Move the cloth a bit to expose the sealing area of the cables.



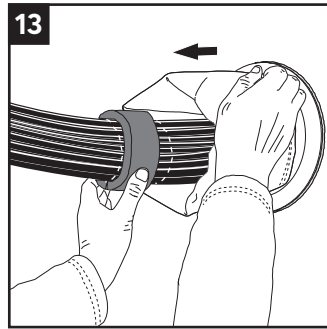
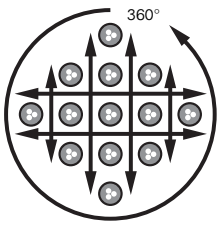
A=60 mm.  
Make another mark on the cables.



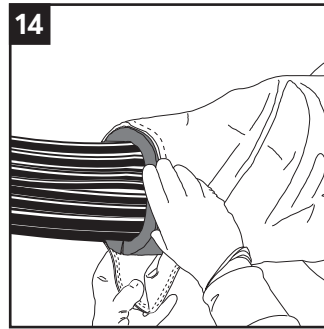
Fold the sealing strip around the cable bundle and cut two pieces, one for each side of the transit.



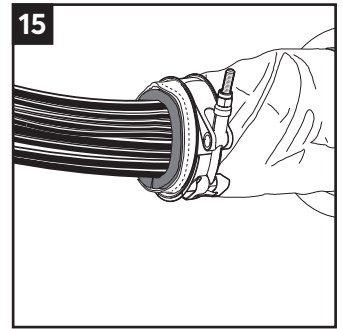
Make a smoke tight transit by applying sealant around and between the cables at the marking.



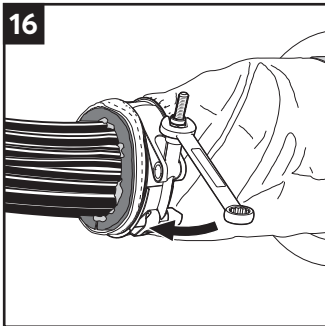
13 Fold the sealing strip around the bundle and over the sealant. Make sure there are no gaps in the joint.



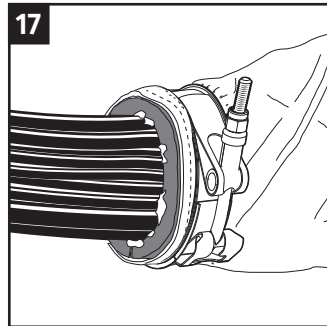
14 Pull back the fiberglass cloth flush to the sealing strip. If necessary, fold the fiberglass cloth excess material for a tight fit.



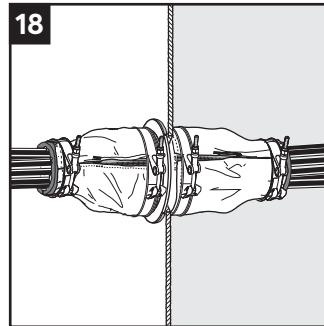
15 Put a strap or a hose clamp at the center of the sealing strip.



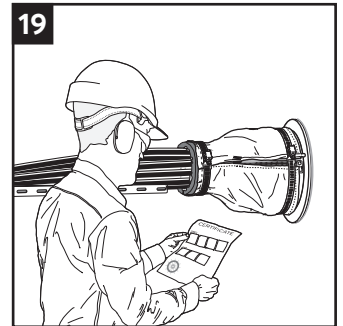
16 Tighten the strap or clamp with a suitable tool. The compression is complete when the sealing strip is compressed by 50-70%.



17 Make sure sealant is squeezed out and that there are no gaps in the bundle or at the sealing strip.



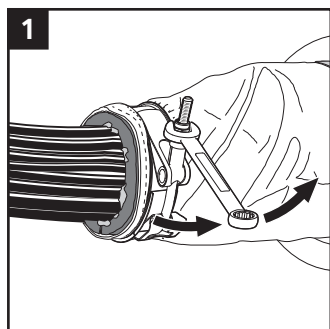
18 Repeat step 7 to 16 for the other side of the transit.



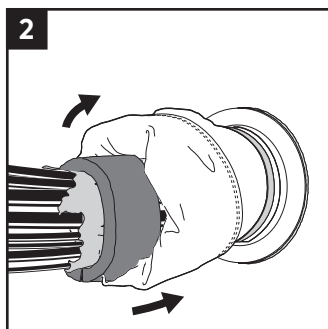
19 Check additional documentation, if applicable.

## Disassembly and reinstallation

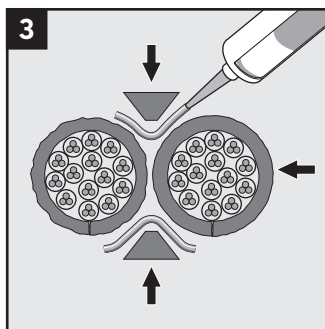
Material needed: 2 pieces of straps or clamps, 2 pieces of sealing strips and sealant.



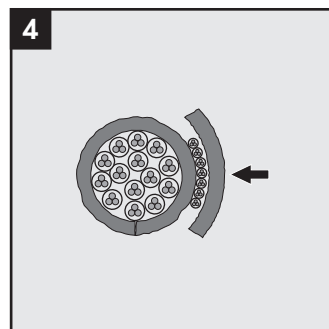
Remove the clamp holding the cables.



Fold back the fiberglass cloth and add a new cable or bundle.

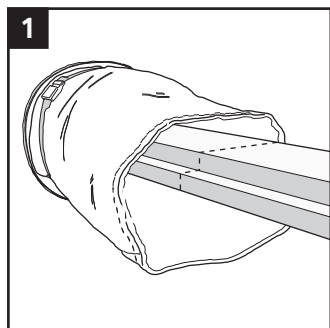


Make sure to fill any gap with sealing strips and sealant. Continue from step 12 on the previous page.

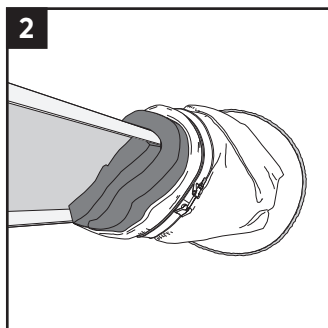


When a few small cables are added a piece of sealing strip can be placed over the new cables. Continue from step 12 on the previous page.

## GK MC FC and busbars

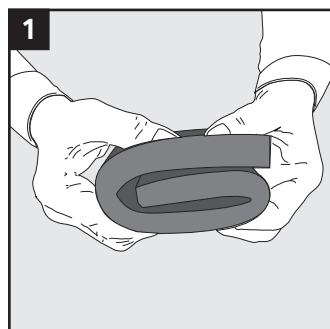


Apply the strip around the busbar. Cavities are filled with shorter pieces of strips. Fold the fiberglass cloth excess material for a tight fit.

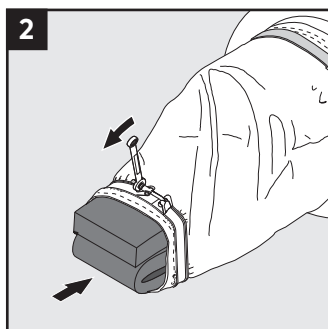


Put a clamp at the center of the sealing strip. Tighten the clamp with a suitable tool. The compression is complete when the sealing strip is compressed by 50-70%.

## GK MC FC without cables



Cut a 300 mm long piece of sealing strip and fold it two times.



Insert the sealing strip and fold the cloth for a tight fit. Put a clamp at the center of the sealing strip and tighten it. The compression is complete when the sealing strip is compressed by 50-70%.



## Note

- The recommended maximum cable density is 67%.
- Make sure not to damage the fiberglass cloth.
- The weight of the cables must be supported on both sides of the GK Multi-cable fire collar.
- Approvals or certificates may include amendments or limitations related to this application.
- The latest version of this and related documents are found at [roxtec.com](http://roxtec.com).

## Disclaimer

"The Roxtec cable and pipe entry sealing system ('the Roxtec system') is a modular-based system of sealing products consisting of different components. Each and every one of the components is necessary for the best performance of the Roxtec system. The Roxtec system has been certified to resist a number of different hazards. Any such certification, and the ability of the Roxtec system to resist such hazards, is dependent on all components that are installed as a part of the Roxtec system. Thus, the certification is not valid and does not apply unless all components installed as part of the Roxtec system are manufactured by or under license from Roxtec ('authorized manufacturer'). Roxtec gives no performance guarantee with respect to the Roxtec system, unless (I) all components installed as part of the Roxtec system are manufactured by an authorized manufacturer and (II) the purchaser is in compliance with (a), and (b), below.

(a) During storage, the Roxtec system or part thereof, shall be kept indoors in its original packaging at room temperature.

(b) Installation shall be carried out in accordance with Roxtec installation instructions in effect from time to time.

The product information provided by Roxtec does not release the purchaser of the Roxtec system, or part thereof, from the obligation to independently

determine the suitability of the products for the intended process, installation and/or use.

Roxtec gives no guarantee for the Roxtec system or any part thereof and assumes no liability for any loss or damage whatsoever, whether direct, indirect, consequential, loss of profit or otherwise, occurred or caused by the Roxtec systems or installations containing components not manufactured by an authorized manufacturer and/or occurred or caused by the use of the Roxtec system in a manner or for an application other than for which the Roxtec system was designed or intended.

Roxtec expressly excludes any implied warranties of merchantability and fitness for a particular purpose and all other express or implied representations and warranties provided by statute or common law. User determines suitability of the Roxtec system for intended use and assumes all risk and liability in connection therewith. In no event shall Roxtec be liable for indirect, consequential, punitive, special, exemplary or incidental damages or losses.

The Roxtec products are offered and sold in accordance with the conditions of the Roxtec General Terms of Sales. The latest version of the Roxtec General Terms of Sales can be found and downloaded from [roxtec.com/general-terms-of-sales](http://roxtec.com/general-terms-of-sales).



Roxtec International AB  
Box 540, 371 23 Karlskrona, SWEDEN  
+46 455 36 67 00, [info@roxtec.com](mailto:info@roxtec.com)  
[www.roxtec.com](http://www.roxtec.com)