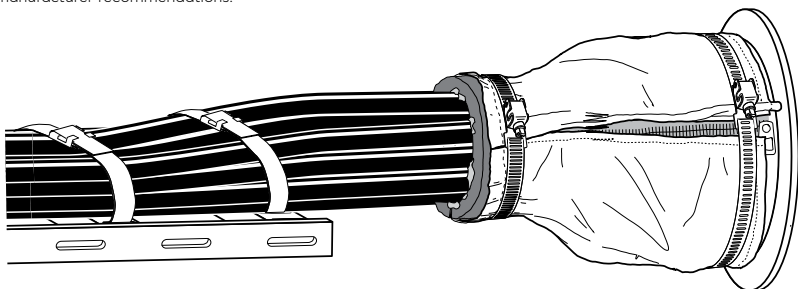


## Safety information

Roxtec recommends that all installations are performed without facility operation. Follow national regulations and installation codes. Any action affecting the routed service should be performed according to manufacturer recommendations.

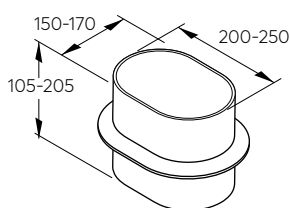


## Installation instructions GK Firestop sealing kit (GK FS SK)

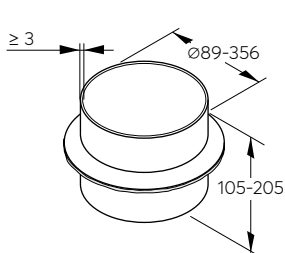


### Pipe sleeve

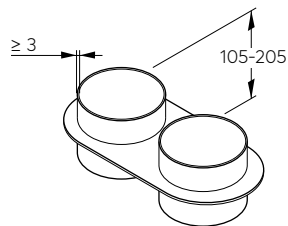
Suitable pipe sleeve dimensions.  
Measures in millimeters (mm).



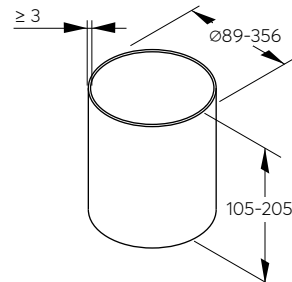
Oval pipe sleeve for welding



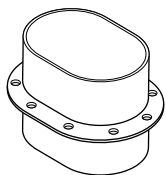
Round pipe sleeve for welding



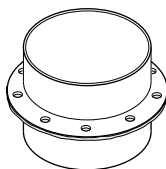
Multiple round or oval pipe sleeve for welding



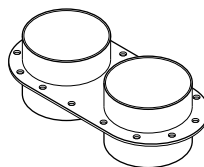
Pipe sleeve without flange for welding



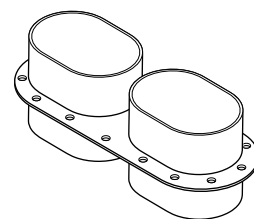
Oval pipe sleeve for bolting



Round pipe sleeve for bolting

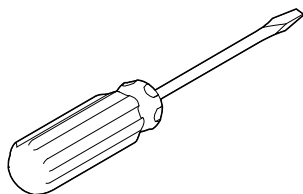


Multiple round pipe sleeve for bolting

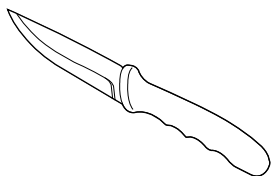


Multiple oval pipe sleeve for bolting

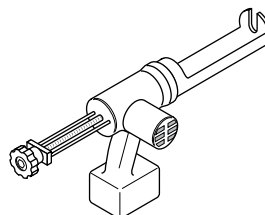
### Tools



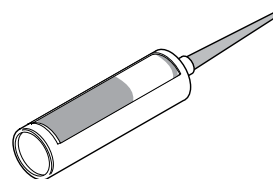
Screwdriver  
(not included)



Knife  
(not included)

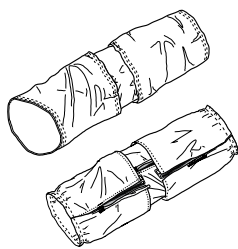


Caulking gun  
(not included)

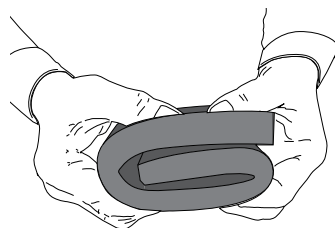


Marine grade smoke sealant  
(not included)

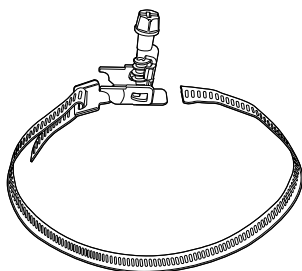
## Components



Openable or non-openable fiberglass cloth  
1 pc.



Sealing strip  
1 pc.



Metal cable tie  
4 pcs.

## Selection guide

A	B
GK FS SK 89 KIT	84 - 89
GK FS SK 127 KIT	107 - 127
GK FS SK 140 KIT	120 - 140
GK FS SK 168 KIT	138 - 168
GK FS SK 219 KIT	179 - 219
GK FS SK 244 KIT	204 - 244
GK FS SK 273 KIT	233 - 273
GK FS SK 324 KIT	274 - 324
GK FS SK 356 KIT	306 - 356

C	D
GK FS SK 200x150 KIT	531 - 571
GK FS SK 200x170 KIT	554 - 594
GK FS SK 250x170 KIT	654 - 694

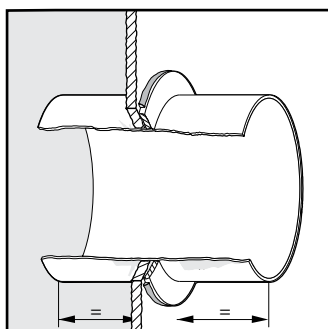
A. Suitable cloth size and kit for round sleeves

B. Sleeve outer diameter min - max (mm)

C. Suitable cloth size and kit for oval sleeves

D. Sleeve outer circumference min - max (mm)

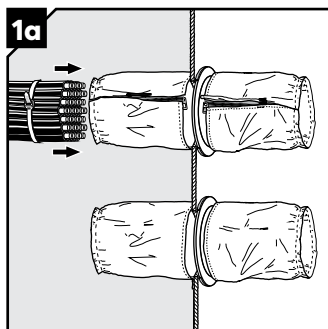
## Installation of sleeve



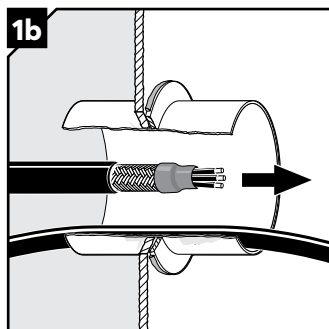
Mount the pipe sleeve symmetrical and smoke tight.

## Installation

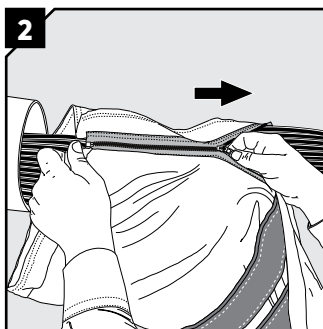
For openable and non-openable cloth.



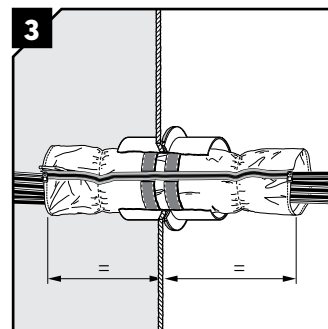
When using a non-openable cloth or when the cable density is high, mount the cloth before routing the cables.



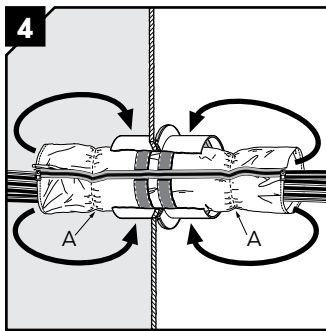
When using an openable cloth, route the cables before mounting the cloth.



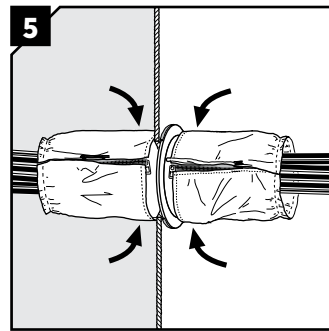
For openable cloth. Open the zipper on the cloth. Wrap the cloth around the cables with the intumescent material outwards. Close the zipper.



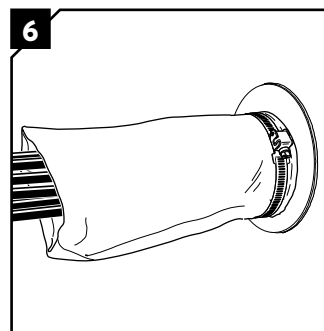
Pull the cloth through the pipe sleeve and make sure it is centered.



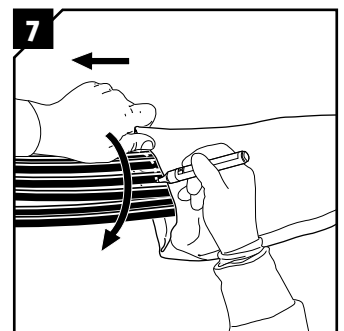
Fold back the fiberglass cloth at the seam (A) on both sides.



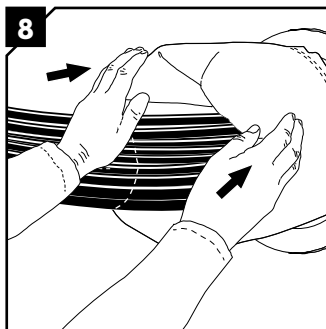
The ends of the fiberglass cloth mounted onto the pipe sleeve.



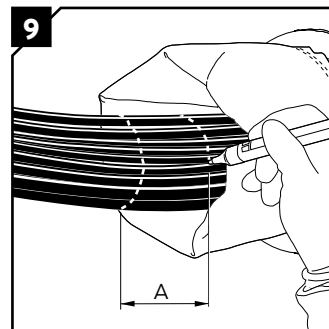
Secure both ends with a cable tie.



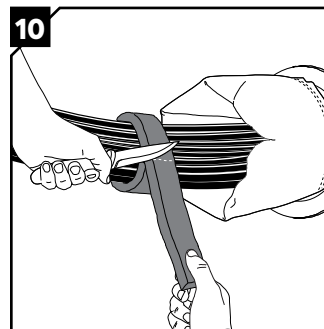
Pull out the cloth. Mark the cables with a pen at the edge of the cloth.



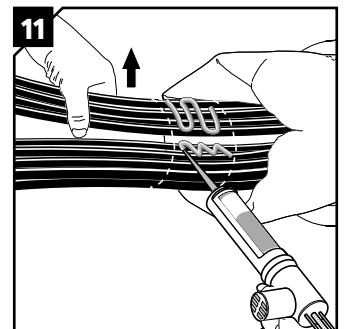
Move the cloth a bit to expose the sealing area of the cables.



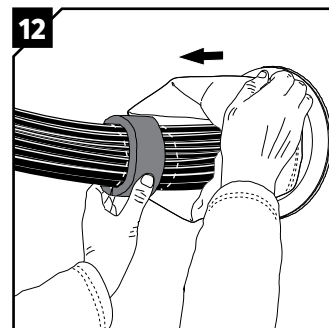
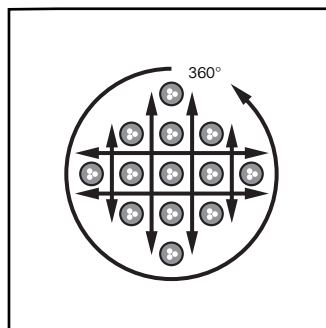
A=60 mm.  
Make another mark on the cables.



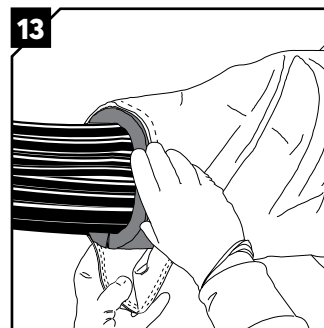
Fold the sealing strip around the cable bundle and cut two pieces, one for each side of the transit.



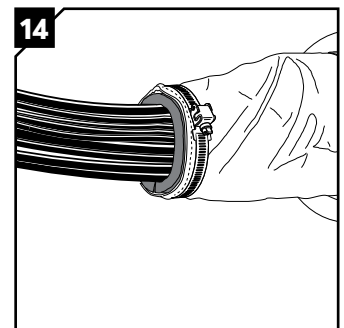
Apply sealant thoroughly between all the cables between the marks. The sealant shall fill the width of the marking. Make sure there are no gaps so that the smoke cannot pass through once the bundle is joined.



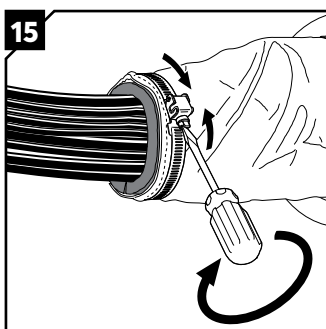
Fold the sealing strip around the bundle and over the sealant. Make sure there are no gaps in the joint.



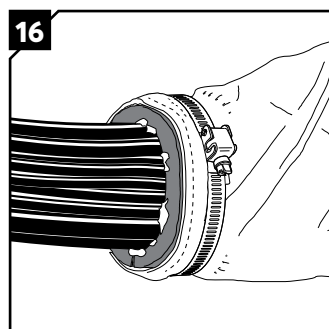
Pull back the cloth flush to the sealing strip. If necessary, fold the cloth excess material for a tight fit.



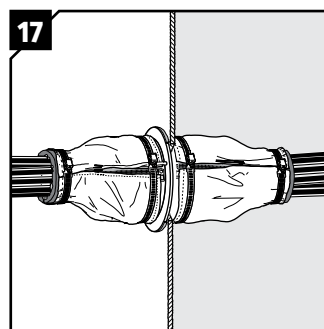
Put a cable tie or a hose clamp at the center of the sealing strip.



Tighten the cable tie with a suitable tool. The compression is complete when the sealing strip is compressed by 50-70%.



Make sure sealant is squeezed out and that there are no gaps in the bundle or at the sealing strip.



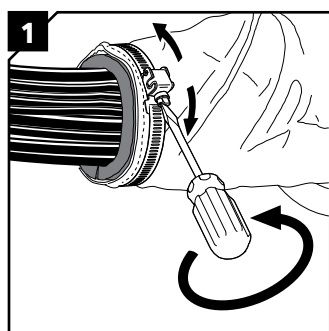
Repeat step 7 to 16 for the other side of the transit.



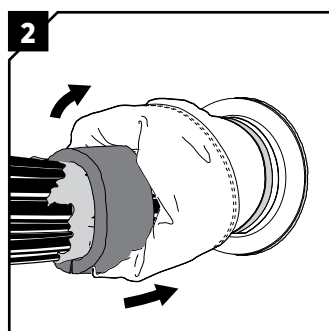
Make a final check!  
Different approvals or certificates may include amendments or limitations related to this application.

## Disassembly and reinstallation

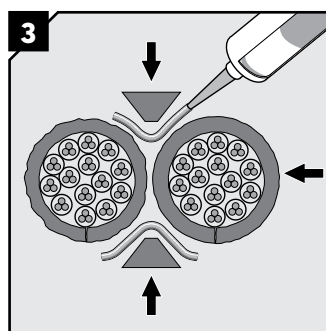
Material needed: 2 pieces of cable tie, 2 pieces of sealing strips and sealant.



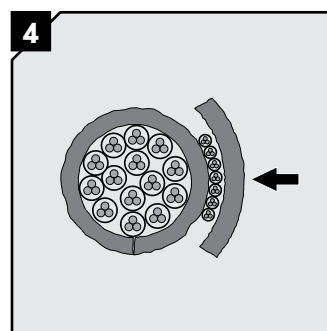
Remove the cable tie holding the cables.



Fold back the cloth and add a new cable or bundle.

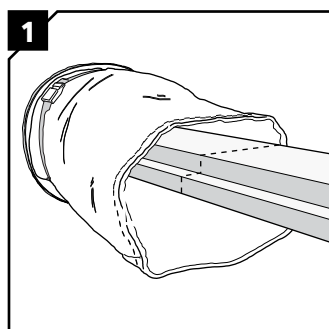


Make sure to fill any gap with sealing strips and sealant. Continue the reinstallation.

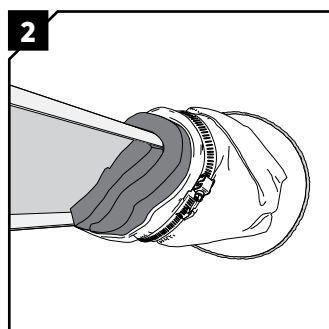


When a few small cables are added a piece of sealing strip can be placed over the new cables. Continue the reinstallation.

## GK FS SK and busbars

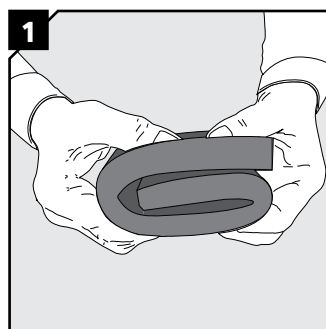


Apply the strip around the busbar. Cavities are filled with shorter pieces of strips. Fold the cloth excess material for a tight fit.

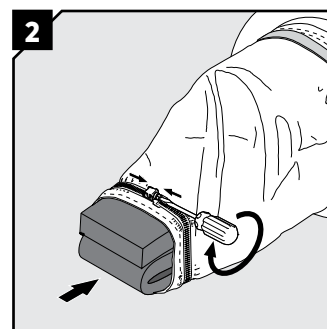


Put a clamp at the center of the sealing strip. Tighten the clamp with a suitable tool. The compression is complete when the sealing strip is compressed by 50-70%.

## GK FS SK without cables



Cut a 300 mm long piece of sealing strip and fold it two times.



Insert the sealing strip and fold the cloth for a tight fit. Put a clamp at the center of the sealing strip and tighten it. The compression is complete when the sealing strip is compressed by 50-70%.

## Note

- The recommended maximum cable density is 68% of the cloth diameter.
- Cables with a diameter up to 50 mm are recommended.
- Make sure not to damage the fiberglass cloth.
- The weight of the cables must be supported on both sides of the GK Firestop sealing kit.
- Approvals or certificates may include amendments or limitations related to this application.
- The latest version of this and related documents are found at [roxtec.com](http://roxtec.com).

## DISCLAIMER

"The Roxtec cable entry sealing system ("the Roxtec system") is a modular-based system of sealing products consisting of different components. Each and every one of the components is necessary for the best performance of the Roxtec system. The Roxtec system has been certified to resist a number of different hazards. Any such certification, and the ability of the Roxtec system to resist such hazards, is dependent on all components that are installed as a part of the Roxtec system. Thus, the certification is not valid and does not apply unless all components installed as part of the Roxtec system are manufactured by or under license from Roxtec ("authorized manufacturer"). Roxtec gives no performance guarantee with respect to the Roxtec system, unless (I) all components installed as part of the Roxtec system are manufactured by an authorized manufacturer and (II) the purchaser is in compliance with (a), and (b), below.  
(a) During storage, the Roxtec system or part thereof, shall be kept indoors in its original packaging at room temperature.  
(b) Installation shall be carried out in accordance with Roxtec installation instructions in effect from time to time.

The product information provided by Roxtec does not release the purchaser of the Roxtec system, or part thereof, from the obligation to independently determine the suitability of the products for the intended process, installation and/or use.

Roxtec gives no guarantee for the Roxtec system or any part thereof and assumes no liability for any loss or damage whatsoever, whether direct, indirect, consequential, loss of profit or otherwise, occurred or caused by the Roxtec systems or installations containing components not manufactured by an authorized manufacturer and/or occurred or caused by the use of the Roxtec system in a manner or for an application other than for which the Roxtec system was designed or intended.

Roxtec expressly excludes any implied warranties of merchantability and fitness for a particular purpose and all other express or implied representations and warranties provided by statute or common law. User determines suitability of the Roxtec system for intended use and assumes all risk and liability in connection therewith. In no event shall Roxtec be liable for indirect, consequential, punitive, special, exemplary or incidental damages or losses."



Manufacturer:

Roxtec International AB  
Box 540, 371 23 Karlskrona, SWEDEN  
PHONE +46 455 36 67 00, FAX +46 455 820 12  
EMAIL [info@roxtec.com](mailto:info@roxtec.com), [www.roxtec.com](http://www.roxtec.com)