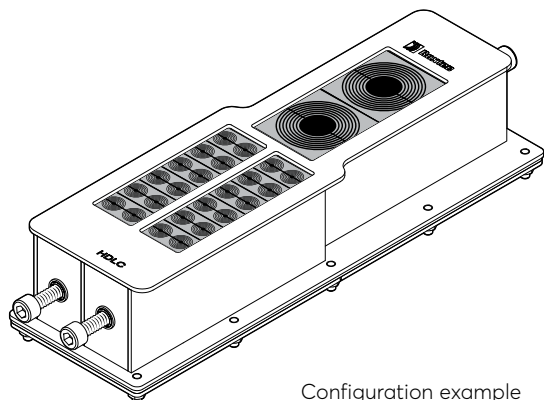


Safety information

Roxtec recommends that all installations are performed without facility operation. Follow national regulations and installation codes. Any action affecting the routed service should be performed according to manufacturer recommendations.

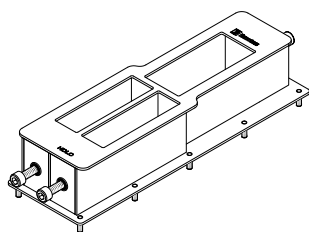


Installation instructions Roxtec HDLC with Roxtec RM modules

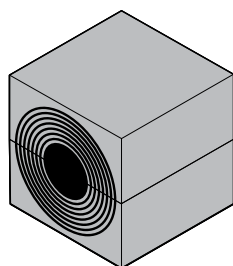


Configuration example
HDLC 24+2

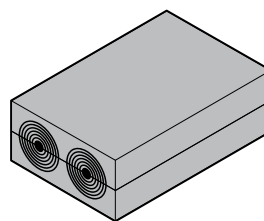
Components



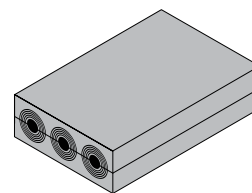
HDLC frame
incl. fasteners



RM module



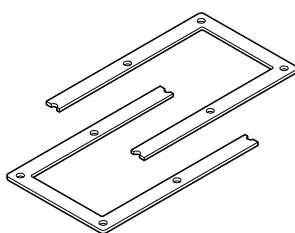
RM module



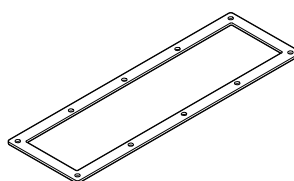
RM module



Roxtec Lubricant

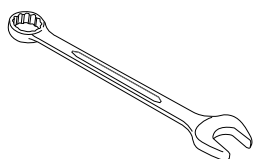


HDLC counter frame

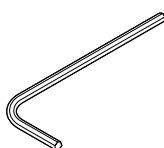


HDLC gasket

Tools



Spanner 10 mm
(not included)

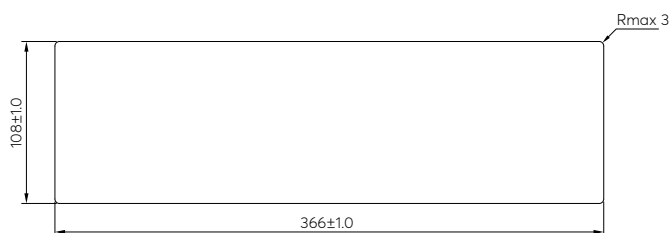


Allen key 8 mm
(not included)

Aperture dimensions in cabinet

All measures in (mm).

Max wall/cabinet thickness: 5 mm



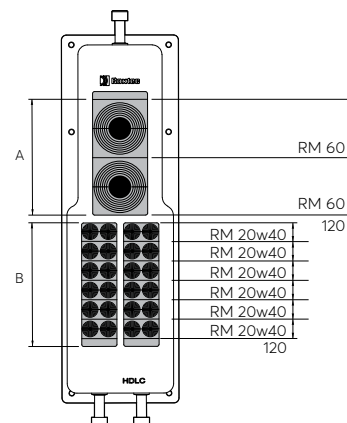
Packing space

All measures in (mm).

Example of module configuration:

The packing height is 120 mm for all three openings.

The combined height of modules for one opening must be equal to the packing height of 120 mm.



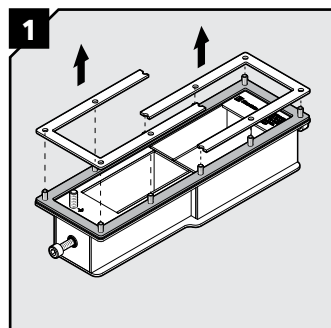
Adaptable Roxtec RM modules

Module	Number of cables/pipes	For cable/pipe diameter Ø (mm)	Packing space
RM 15w40	3	0+3.5-10.5	B
RM 20w40	2	0+3.5-16.5	B
RM 30w40	1	0+10-25	B
RM 40	1	0+21.5-34.5	B
RM 40 10-32	1	0+9.5-32.5	B
RM 30	1	0+10-24	A
RM 60	1	0+28-54	A

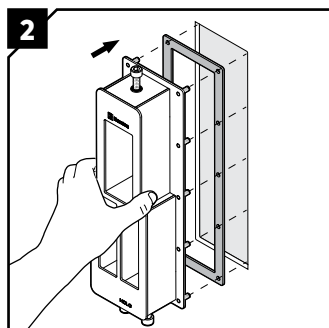
Compensation RM solid modules

Module	Number of cables/pipes	For cable/pipe diameter Ø (mm)	Packing space
RM 5w40/0	-	-	B
RM 10w40/0	-	-	B

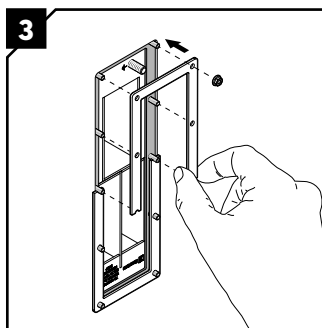
Installation



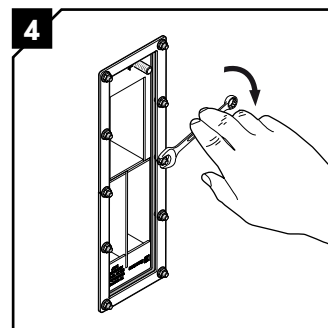
Remove the two parts of the counter frame.



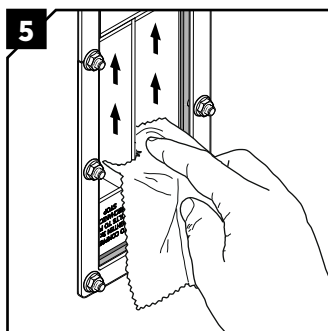
Insert the HDLC frame from the outside of the cabinet. Make sure the gasket is placed between the frame and the cabinet.



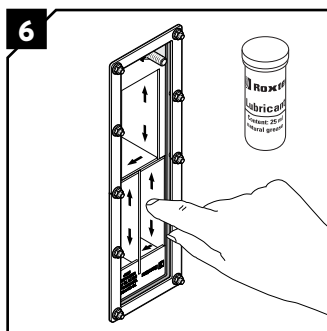
Attach the two parts of the counter frame and the nuts from the inside of the cabinet.



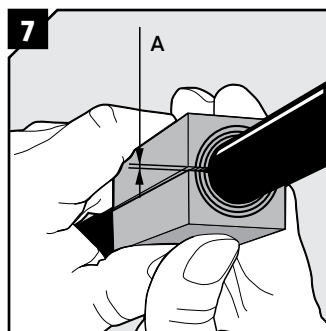
Tighten the nuts crosswise in small steps. Recommended torque 4 Nm. Do not overtighten.



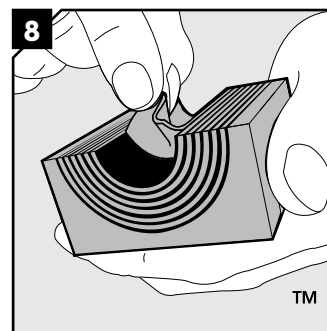
5 Clean the inside surfaces of the frame.



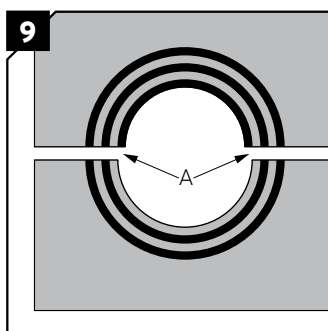
6 Lubricate the inside surfaces all around with Roxtec Lubricant, especially into the corners.



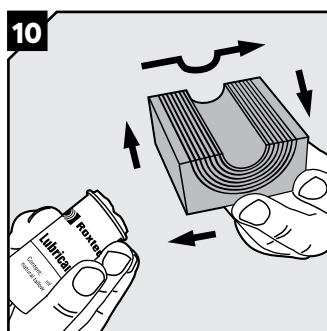
7 When preparing the modules for cables, ensure a 0.1-1.0 mm gap (A) between the module halves.



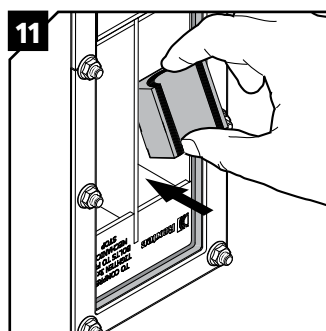
8 Adapt the module halves by peeling off layers. Check the gap by holding them against the cable.



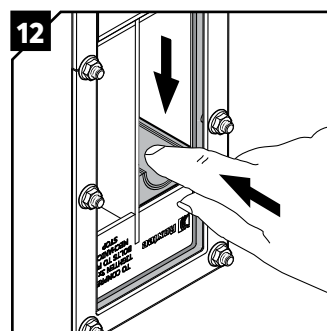
9 The number of layers may not differ (A) by more than one between the corresponding module halves.



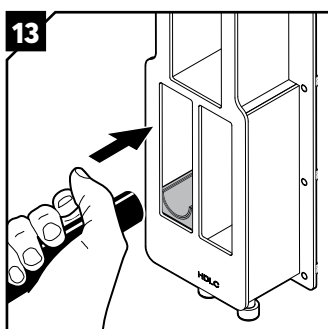
10 Lubricate the sealing surfaces of all modules.



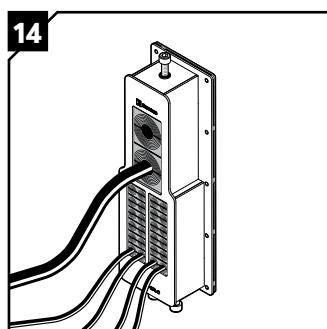
11 Insert the modules at an angle from the backside of the transit according to your packing plan.



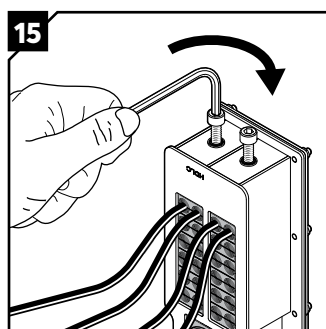
12 Push the modules in place. Ensure that the module rests against the stopping edge at the front.



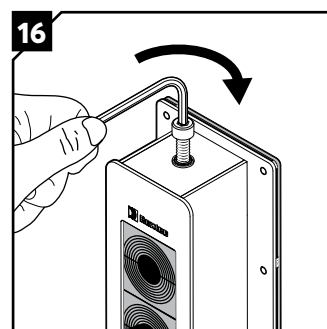
13 Insert the cables through the frame.



14 Continue to fill up the packing space according to your packing plan. Make sure that the combined height of modules equals the packing height of 120 mm.

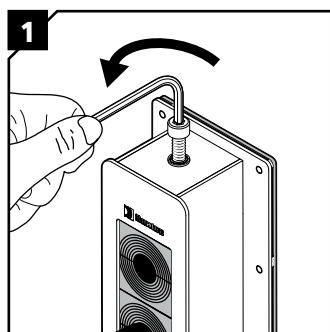


15 Tighten the two screws of the compression units until full mechanical stop. Do not exceed 20 Nm.

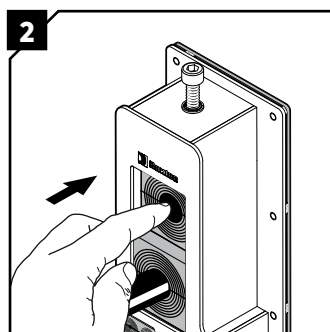


16 Tighten the screw of the compression unit until full mechanical stop. Do not exceed 20 Nm.

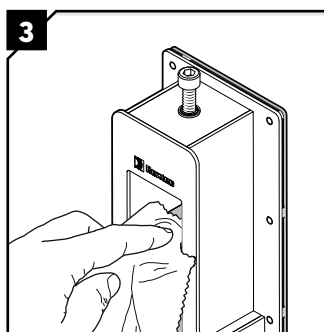
Disassembly and reinstallation



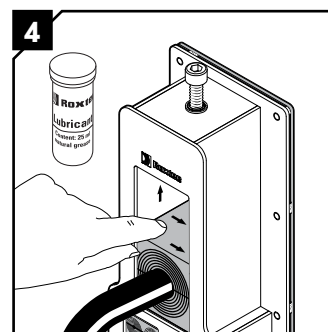
Release the compression by loosening the screws.



Push out the modules from the front side.



Make sure that the inside surfaces of the exposed packing space are free from dirt or dust.



Lubricate the inside surfaces all around with Roxtec Lubricant, especially into the corners. Continue the reinstallation.

Note

- Wait 24 hours or longer after installation before exposing the cables/pipes to strain or pressure.
- To be used with: RM modules.
- Cables shall go straight through the frame.
- Approvals or certificates may include amendments or limitations related to this application.
- The latest version of this and related documents are found at roxtec.com.

DISCLAIMER

"The Roxtec cable entry sealing system ("the Roxtec system") is a modular-based system of sealing products consisting of different components. Each and every one of the components is necessary for the best performance of the Roxtec system. The Roxtec system has been certified to resist a number of different hazards. Any such certification, and the ability of the Roxtec system to resist such hazards, is dependent on all components that are installed as a part of the Roxtec system. Thus, the certification is not valid and does not apply unless all components installed as part of the Roxtec system are manufactured by or under license from Roxtec ("authorized manufacturer"). Roxtec gives no performance guarantee with respect to the Roxtec system, unless (I) all components installed as part of the Roxtec system are manufactured by an authorized manufacturer and (II) the purchaser is in compliance with (a), and (b), below.

(a) During storage, the Roxtec system or part thereof, shall be kept indoors in its original packaging at room temperature.

(b) Installation shall be carried out in accordance with Roxtec installation instructions in effect from time to time.

The product information provided by Roxtec does not release the purchaser of the Roxtec system, or part thereof, from the obligation to independently determine the suitability of the products for the intended process, installation and/or use.

Roxtec gives no guarantee for the Roxtec system or any part thereof and assumes no liability for any loss or damage whatsoever, whether direct, indirect, consequential, loss of profit or otherwise, occurred or caused by the Roxtec systems or installations containing components not manufactured by an authorized manufacturer and/or occurred or caused by the use of the Roxtec system in a manner or for an application other than for which the Roxtec system was designed or intended.

Roxtec expressly excludes any implied warranties of merchantability and fitness for a particular purpose and all other express or implied representations and warranties provided by statute or common law. User determines suitability of the Roxtec system for intended use and assumes all risk and liability in connection therewith. In no event shall Roxtec be liable for indirect, consequential, punitive, special, exemplary or incidental damages or losses.*



Roxtec International AB

Box 540, 371 23 Karlskrona, SWEDEN
 PHONE +46 455 36 67 00, FAX +46 455 820 12
 EMAIL info@roxtec.com, www.roxtec.com