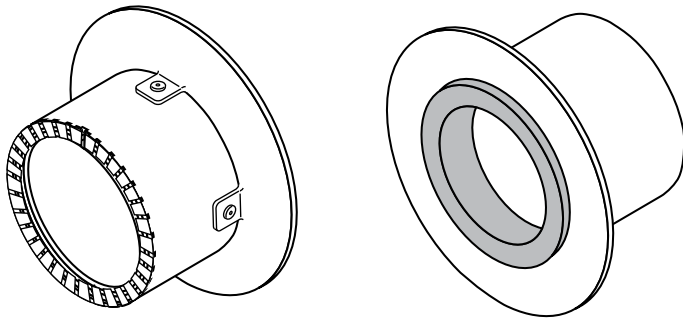
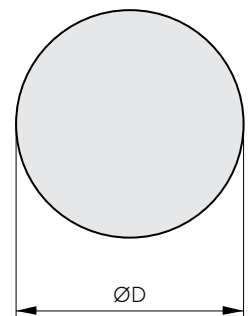


Installation instructions Roxtec Sleeve-it™ Alu Waterproof penetration seal

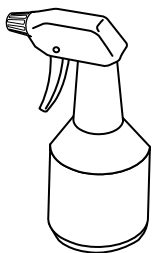


Aperture dimensions

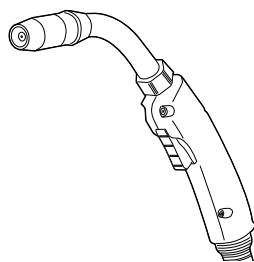
Name	Pipe outer Ø (mm)	Rec. aperture ØD ±3 (mm)	Art. no.
SLEEV-IT WT MAR16M ALU	16	50	151259
SLEEV-IT WT MAR20M ALU	20	56	151260
SLEEV-IT WT MAR25M ALU	25	62	151261
SLEEV-IT WT MAR32M ALU	32	69	151262
SLEEV-IT WT MAR40M ALU	40	76	151263
SLEEV-IT WT MAR50M ALU (1.5")	48,3	84	151264
SLEEV-IT WT MAR50M ALU	50	86	151265
SLEEV-IT WT MAR60M ALU (2")	60,3	100	151266
SLEEV-IT WT MAR63M ALU	63	103	151267
SLEEV-IT WT MAR75M ALU	75	120	151268
SLEEV-IT WT MAR90M ALU (3")	88,9	134	151269
SLEEV-IT WT MAR90M ALU	90	135	151270
SLEEV-IT WT MAR110M ALU	110	160	151271
SLEEV-IT WT MAR115M ALU (4")	114,3	165	151272
SLEEV-IT WT MAR125M ALU	125	175	151273
SLEEV-IT WT MAR140M ALU	140	195	151274
SLEEV-IT WT MAR160M ALU	160	215	151275
SLEEV-IT WT MAR169M ALU (6")	168,3	224	151276
SLEEV-IT WT MAR200M ALU	200	265	151277
SLEEV-IT WT MAR219M ALU (8")	219,1	284	151278
SLEEV-IT WT MAR225M ALU	225	290	151279



Tools needed

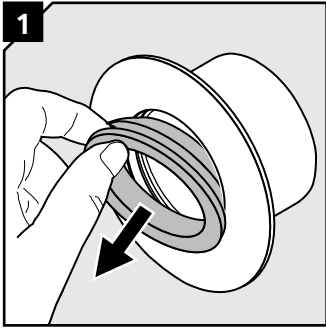


Spray bottle with
soapy water

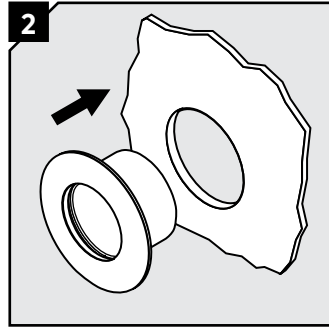


GMAW welder

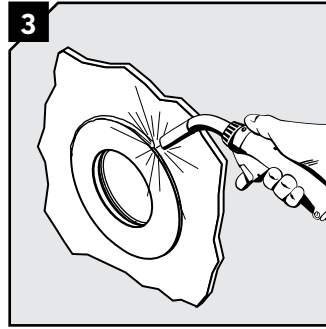
Installation



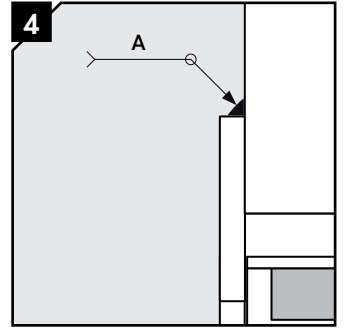
1 Remove the rubber grommet from the flange.



2 Insert the penetration seal into the aperture.

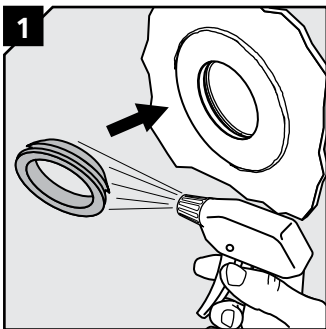


3 Remove the rubber grommet from the flange. Tight weld the flange to the structure using the GMAW process.

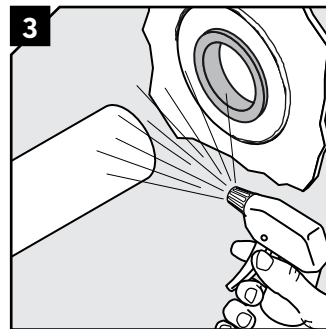
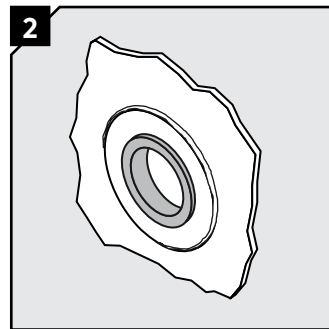


4 Make a waterproof weld max a3 (A) using GMAW to reduce the heat input.

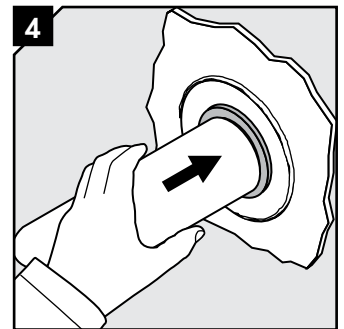
Routing the pipe, alternative 1



1 Lubricate the grommet and flange with soap water and insert the rubber grommet.

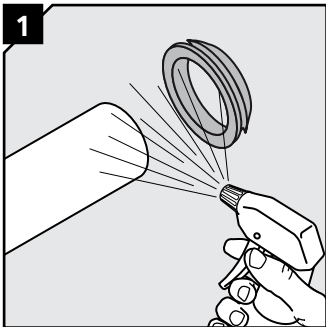


3 Lubricate the pipe and the rubber grommet thoroughly with soap water.

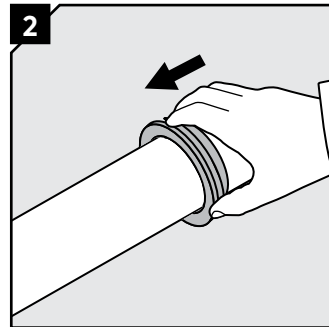


4 Gently route the pipe through the seal from the grommet side.

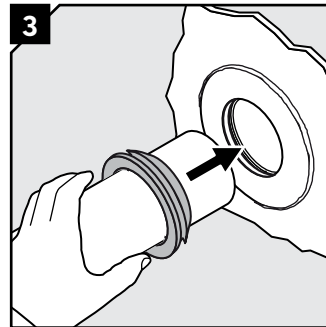
Routing the pipe, alternative 2



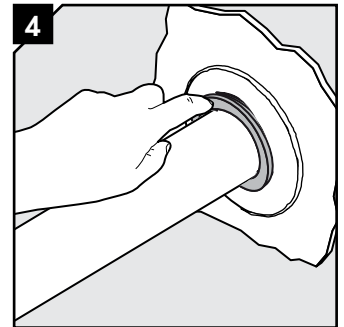
1 Lubricate the pipe and the rubber grommet thoroughly with soap water.



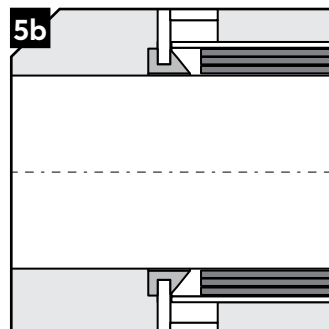
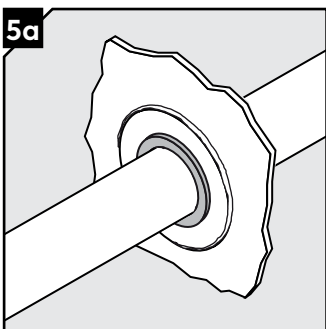
2 Mount the rubber grommet onto the pipe.



3 Gently route the pipe through the sleeve.

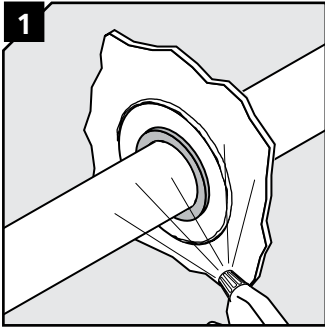


4 Lubricate the grommet with soap water. Insert the grommet into the sleeve.

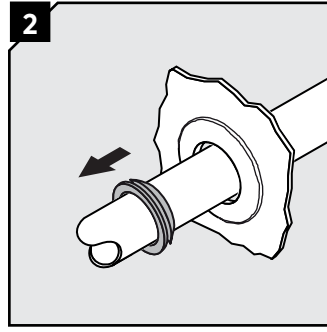


5a Make sure the grommet is properly inserted and secured in the sleeve.

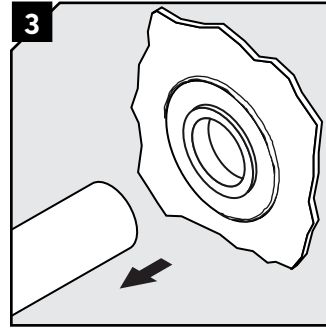
Disassembly



Lubricate the pipe.



Slide of the grommet.



Alternatively remove the pipe.

Note

- See type approval certificates for detailed application information.

Disclaimer

"The Roxtec cable entry sealing system ("the Roxtec system") is a modular-based system of sealing products consisting of different components. Each and every one of the components is necessary for the best performance of the Roxtec system. The Roxtec system has been certified to resist a number of different hazards. Any such certification, and the ability of the Roxtec system to resist such hazards, is dependent on all components that are installed as a part of the Roxtec system. Thus, the certification is not valid and does not apply unless all components installed as part of the Roxtec system are manufactured by or under license from Roxtec ("authorized manufacturer"). Roxtec gives no performance guarantee with respect to the Roxtec system, unless (I) all components installed as part of the Roxtec system are manufactured by an authorized manufacturer and (II) the purchaser is in compliance with (a), and (b), below.

(a) During storage, the Roxtec system or part thereof, shall be kept indoors in its original packaging at room temperature.

(b) Installation shall be carried out in accordance with Roxtec installation instructions in effect from time to time.

The product information provided by Roxtec does not release the purchaser of the Roxtec system, or part thereof, from the obligation to independently determine the suitability of the products for the intended process, installation and/or use.

Roxtec gives no guarantee for the Roxtec system or any part thereof and assumes no liability for any loss or damage whatsoever, whether direct, indirect, consequential, loss of profit or otherwise, occurred or caused by the Roxtec systems or installations containing components not manufactured by an authorized manufacturer and/or occurred or caused by the use of the Roxtec system in a manner or for an application other than for which the Roxtec system was designed or intended.

Roxtec expressly excludes any implied warranties of merchantability and fitness for a particular purpose and all other express or implied representations and warranties provided by statute or common law. User determines suitability of the Roxtec system for intended use and assumes all risk and liability in connection therewith. In no event shall Roxtec be liable for indirect, consequential, punitive, special, exemplary or incidental damages or losses.*



Roxtec International AB, Box 540
371 23 Karlskrona, Sweden
+46 455 36 67 00, www.roxtec.com