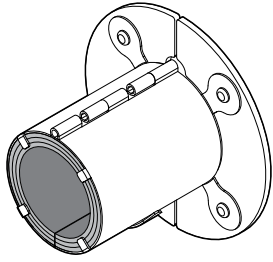
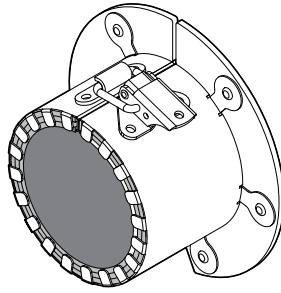


Installation instructions Roxtec Sleeve-it™ Alu Fire penetration seal

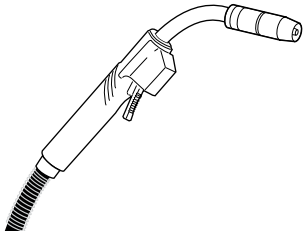


Size
16-40

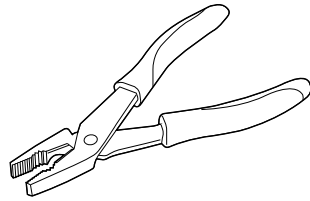


Size
50-225

Tools needed



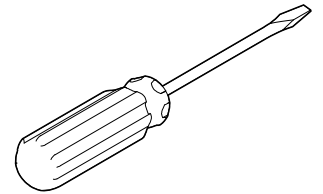
Welder



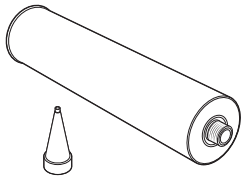
Pliers



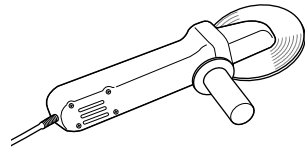
Soap water



Screwdriver



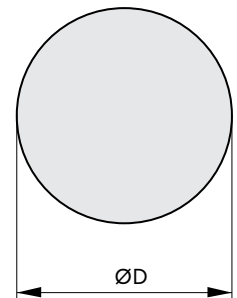
Roxtec Fire Sealant
Art. nr. 108279



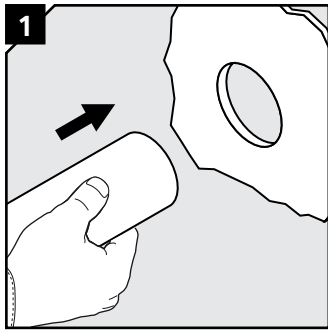
Side grinder

Aperture dimensions

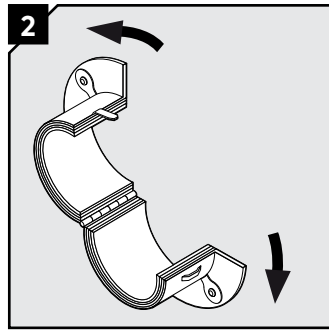
Name	Pipe outer Ø (mm)	Recommended aperture ØD ±3 (mm)	Article number	Number of tack welds/bolts
SLEEV-IT FC MAR16M ALU	16	23	151280	2
SLEEV-IT FC MAR20M ALU	20	27	151281	3
SLEEV-IT FC MAR25M ALU	25	32	151282	3
SLEEV-IT FC MAR32M ALU	32	39	151283	3
SLEEV-IT FC MAR40M ALU	40	47	151284	3
SLEEV-IT FC MAR50M ALU (1.5")	48,3	55	151285	3
SLEEV-IT FC MAR60M ALU (2")	60,3	67	151286	3
SLEEV-IT FC MAR63M ALU	63	70	151287	3
SLEEV-IT FC MAR66M ALU	66	73	153747	4
SLEEV-IT FC MAR75M ALU	75	82	151288	4
SLEEV-IT FC MAR82M ALU	82	89	153748	4
SLEEV-IT FC MAR90M ALU (3")	88,9	96	151289	4
SLEEV-IT FC MAR110M ALU	110	117	151290	4
SLEEV-IT FC MAR115M ALU (4")	114,3	121	151291	4
SLEEV-IT FC MAR125M ALU	125	132	151292	4
SLEEV-IT FC MAR140M ALU	140	147	151293	6
SLEEV-IT FC MAR160M ALU	160	167	151294	6
SLEEV-IT FC MAR169M ALU (6")	168,3	175	151295	6
SLEEV-IT FC MAR200M ALU	200	207	151296	8
SLEEV-IT FC MAR219M ALU (8")	219,1	226	151297	8
SLEEV-IT FC MAR225M ALU	225	232	151298	8



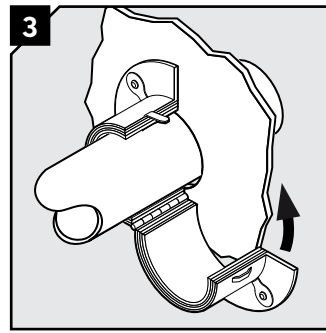
Installation



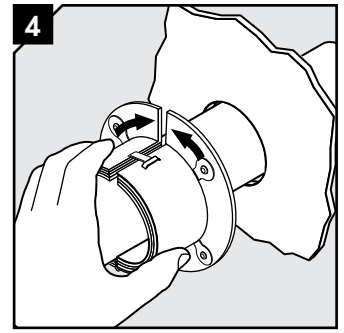
1 Route the pipe through the aperture.



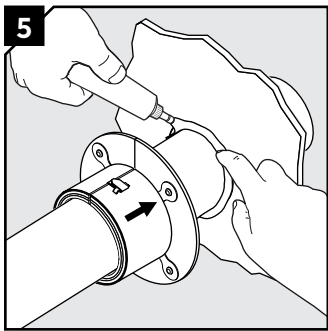
2 Open the fire penetration seal.



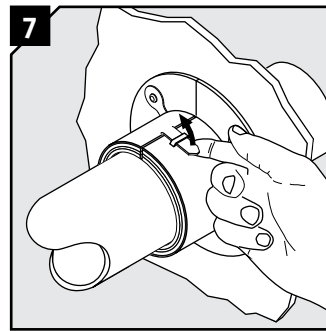
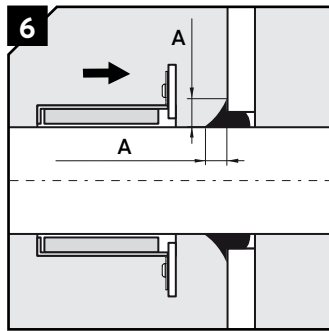
3 Apply the fire penetration seal onto the pipe.



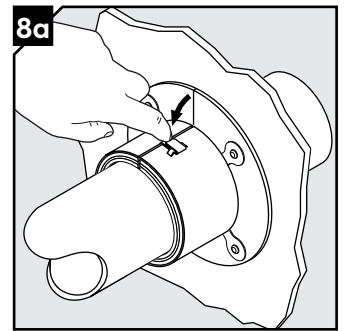
4 Close the fire penetration seal.



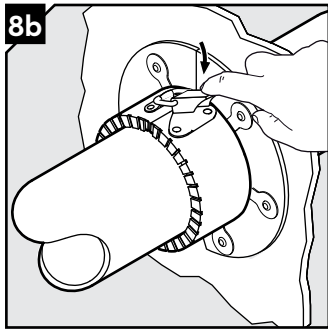
5 Apply Roxtec sealant into the annular gap between the plastic pipe and the structure. Arrange a chamfered filling extending at least 10 mm (A) along the plastic pipe and with an offset at least 10 mm (A) towards/onto the structure. Push the fire penetration seal towards the structure.



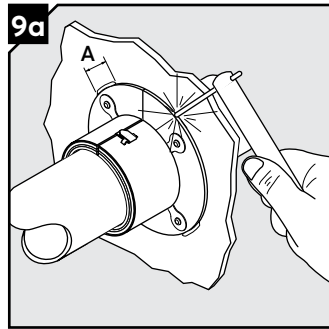
7 Lock the fire penetration seal by pulling the tab over.



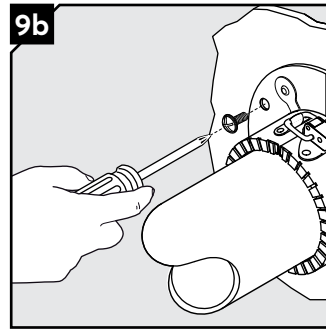
8a Fire penetration seal locked (for smaller sizes).



8b Push down the lever to lock the fastener (for larger sizes).



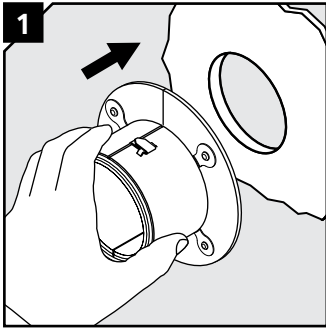
9a Weld the fire penetration seal to the structure according to the table on previous page. Length of welds 15-20 mm (A).



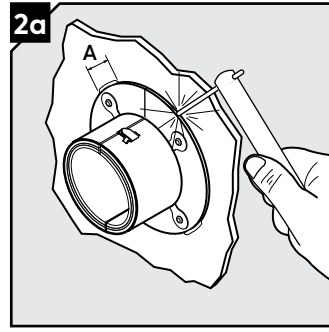
9b **Alternative:** Drill holes in the flange and bolt the fire penetration seal to the structure according to the table on previous page.

Installation

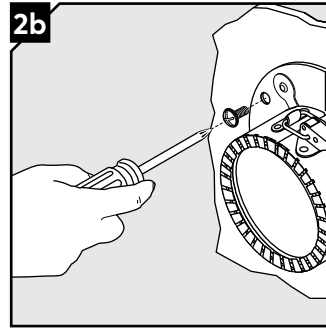
Non pre-routed pipe.



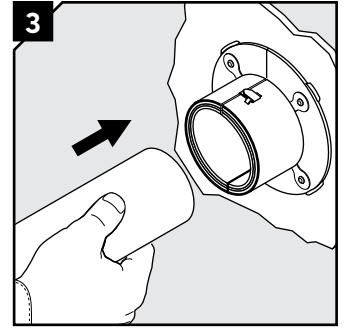
Locate and align the closed and locked fire penetration seal with the aperture.



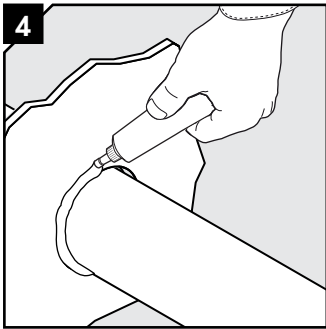
Tack weld the fire penetration seal to the structure according to the table on the first page. Length of welds 15-20 mm (A).



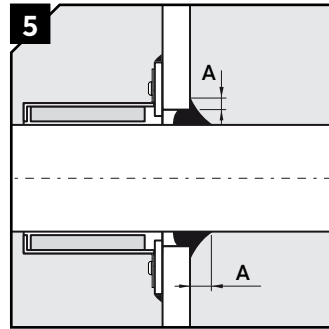
Alternative: Drill holes in the flange and bolt the fire penetration seal to the structure according to the table on the first page.



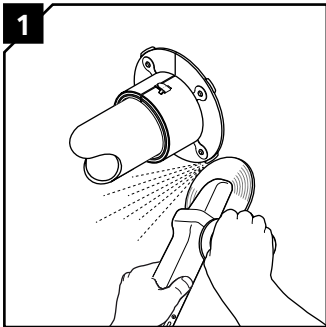
Route the pipe through the aperture and fire penetration seal.



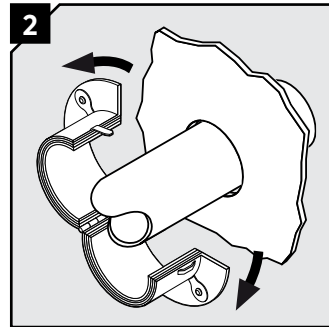
Apply the sealant from the other side of the structure, in the annular gap between the plastic pipe and the structure. Arrange a chamfered filling extending at least 5 mm (A) along the plastic pipe and at least 5 mm (A) onto the structure.



Disassembly



Use a side grinder or similar tool to remove the welds holding the fire penetration seal.



Open the fire penetration seal and remove it.

Note

- See type approval certificates for detailed application information.

DISCLAIMER

"The Roxtec cable entry sealing system ("the Roxtec system") is a modular-based system of sealing products consisting of different components. Each and every one of the components is necessary for the best performance of the Roxtec system. The Roxtec system has been certified to resist a number of different hazards. Any such certification, and the ability of the Roxtec system to resist such hazards, is dependent on all components that are installed as a part of the Roxtec system. Thus, the certification is not valid and does not apply unless all components installed as part of the Roxtec system are manufactured by or under license from Roxtec ("authorized manufacturer"). Roxtec gives no performance guarantee with respect to the Roxtec system, unless (I) all components installed as part of the Roxtec system are manufactured by an authorized manufacturer and (II) the purchaser is in compliance with (a), and (b), below.

(a) During storage, the Roxtec system or part thereof, shall be kept indoors in its original packaging at room temperature.

(b) Installation shall be carried out in accordance with Roxtec installation instructions in effect from time to time.

The product information provided by Roxtec does not release the purchaser of the Roxtec system, or part thereof, from the obligation to independently determine the suitability of the products for the intended process, installation and/or use.

Roxtec gives no guarantee for the Roxtec system or any part thereof and assumes no liability for any loss or damage whatsoever, whether direct, indirect, consequential, loss of profit or otherwise, occurred or caused by the Roxtec systems or installations containing components not manufactured by an authorized manufacturer and/or occurred or caused by the use of the Roxtec system in a manner or for an application other than for which the Roxtec system was designed or intended.

Roxtec expressly excludes any implied warranties of merchantability and fitness for a particular purpose and all other express or implied representations and warranties provided by statute or common law. User determines suitability of the Roxtec system for intended use and assumes all risk and liability in connection therewith. In no event shall Roxtec be liable for indirect, consequential, punitive, special, exemplary or incidental damages or losses."



Roxtec International AB, Box 540
371 23 Karlskrona, Sweden
+46 455 36 67 00, www.roxtec.com