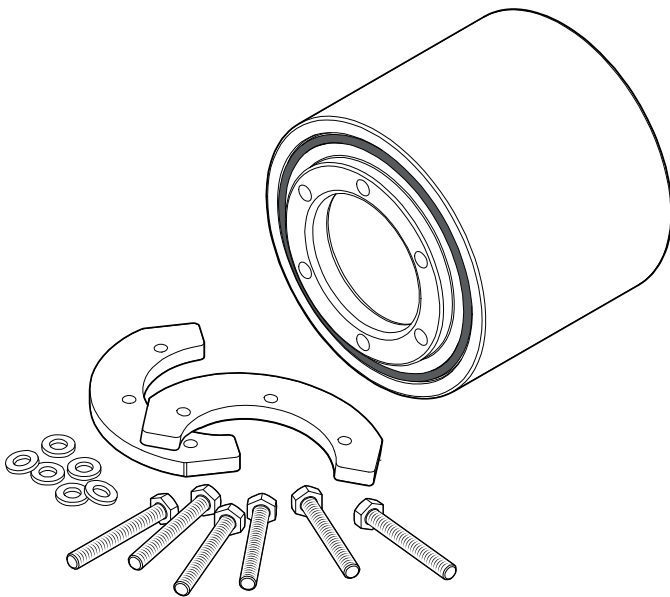
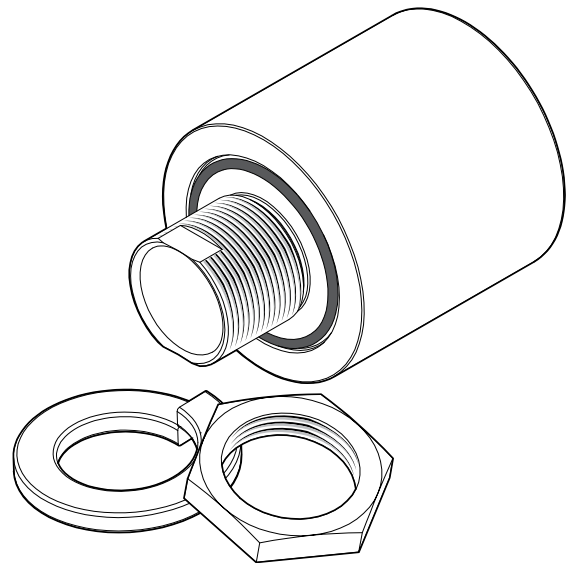


**Installation instructions  
Roxtec SLA sleeve**



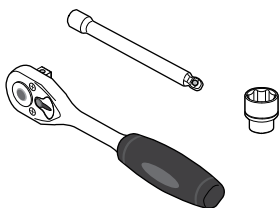
SLA 100



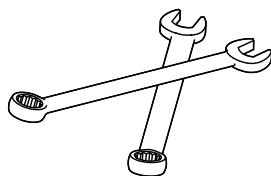
SLA 25 - 75

**Optional tools**

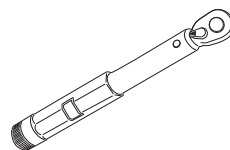
(not included)



Ratchet wrench with extension



Spanners

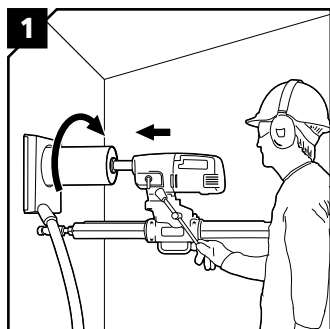
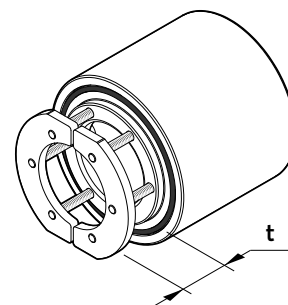


Torque wrench

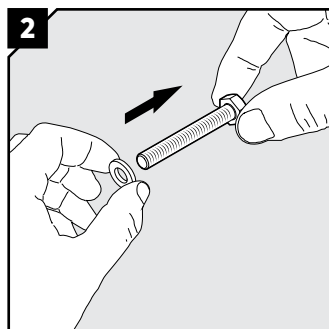
# Installation

SLA 100.

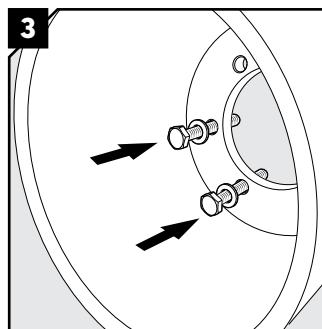
Type	Max. torque (Nm)	Spanner size (mm)	Aperture Ø (mm)	Wall thickness t (mm)	Accommodates cables up to Ø (mm)
SLA 100	9	10	80 - 85	5 - 30	53



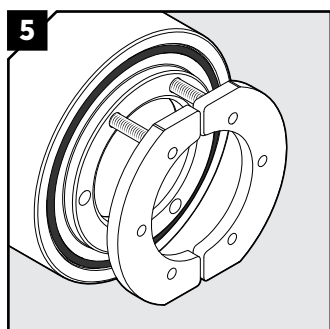
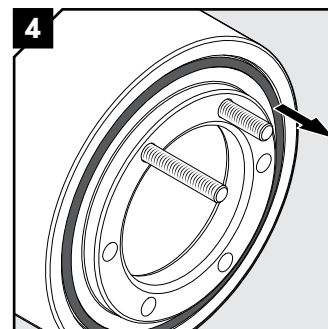
Make an aperture according to the table.



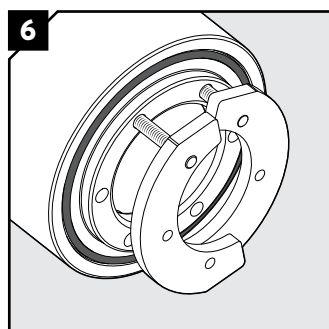
Attach the washers to the screws.



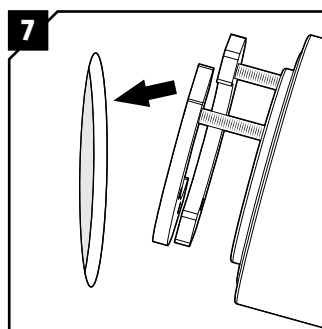
Insert two of the screws in the SLA sleeve. Make sure that the O-ring sits securely in the groove.



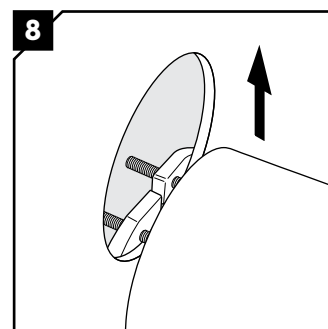
Fasten the two fittings to the screws.



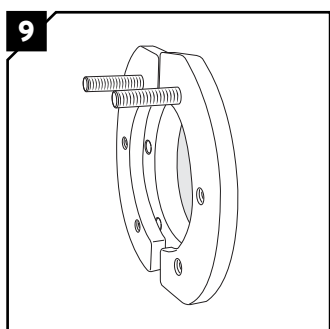
Place the fittings one above the other to allow insertion into the aperture.



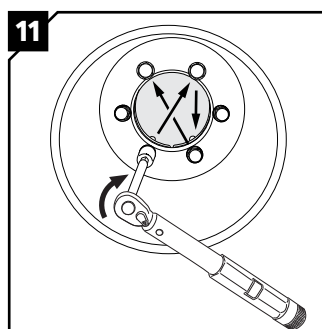
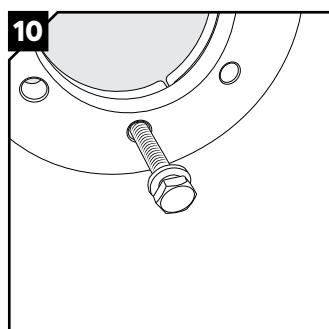
Insert the fittings into the aperture.



Tighten the screws with your fingers and move the sleeve in position.



With the sleeve in position, tighten the two screws and align the holes in the sleeve with the threaded holes in the fittings. Fasten the remaining screws.

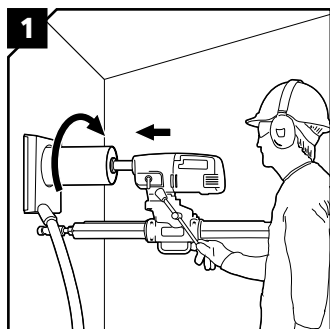
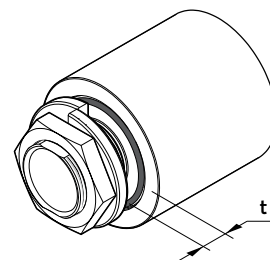


Tighten the screws crosswise in small steps until the O-ring is compressed and the sleeve is flush with the structure.

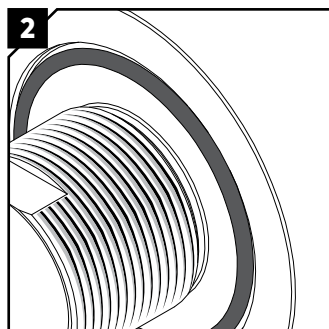
## Installation

SLA 25 - 75.

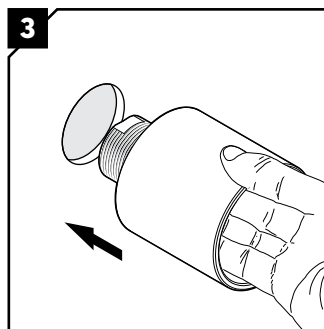
Type	Max. torque (Nm)	Spanner size nut (mm)	Spanner size counterhold (mm)	Aperture Ø (mm)	Max. wall thickness t (mm)	Accommodates cables up to Ø (mm)
SLA 25	40	32	17	21 - 22	15	13
SLA 50	60	46	30	34 - 40	15	25
SLA 75	80	55	38	42 - 49	15	34



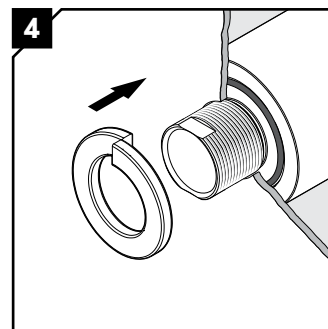
Make an aperture according to the table.



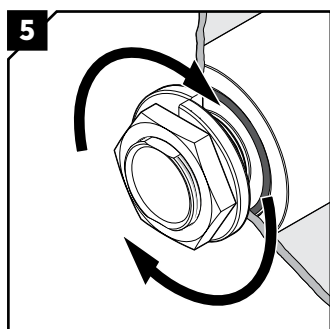
Make sure that the O-ring sits securely in the groove.



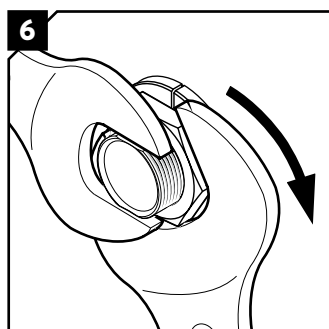
Insert the SLA sleeve into the aperture.



Attach the lock washer.



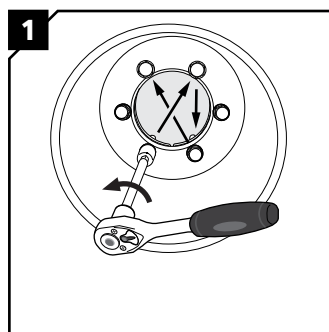
Thread on the nut.



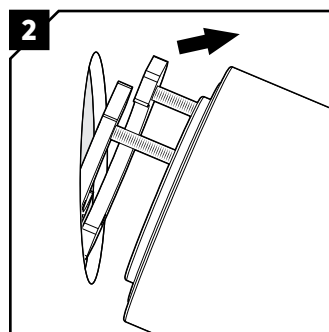
Tighten the nut firmly until the O-ring is compressed and the sleeve is flush with the structure. Prevent the sleeve from rotating by using another spanner.

## Disassembly

SLA 100.



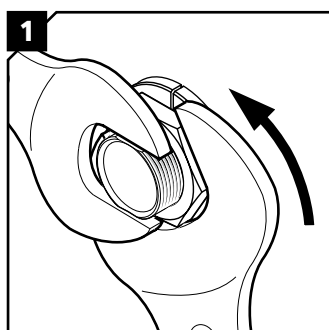
Loosen the screws alternately in small steps. Do not unscrew the two top screws completely.



With the two top screws still attached to the fittings, remove the SLA sleeve from the structure.

## Disassembly

SLA 25 - 75.



Untighten the nut and remove the SLA sleeve.

## Note

- For use with Roxtec seals of R and RS type.
- Approvals or certificates may include amendments or limitations related to this application.
- The latest version of this and related documents are found at [roxtec.com](http://roxtec.com).

## DISCLAIMER

"The Roxtec cable entry sealing system ("the Roxtec system") is a modular-based system of sealing products consisting of different components. Each and every one of the components is necessary for the best performance of the Roxtec system. The Roxtec system has been certified to resist a number of different hazards. Any such certification, and the ability of the Roxtec system to resist such hazards, is dependent on all components that are installed as a part of the Roxtec system. Thus, the certification is not valid and does not apply unless all components installed as part of the Roxtec system are manufactured by or under license from Roxtec ("authorized manufacturer"). Roxtec gives no performance guarantee with respect to the Roxtec system, unless (I) all components installed as part of the Roxtec system are manufactured by an authorized manufacturer and (II) the purchaser is in compliance with (a), and (b), below.

(a) During storage, the Roxtec system or part thereof, shall be kept indoors in its original packaging at room temperature.

(b) Installation shall be carried out in accordance with Roxtec installation instructions in effect from time to time.

The product information provided by Roxtec does not release the purchaser of the Roxtec system, or part thereof, from the obligation to independently determine the suitability of the products for the intended process, installation and/or use.

Roxtec gives no guarantee for the Roxtec system or any part thereof and assumes no liability for any loss or damage whatsoever, whether direct, indirect, consequential, loss of profit or otherwise, occurred or caused by the Roxtec systems or installations containing components not manufactured by an authorized manufacturer and/or occurred or caused by the use of the Roxtec system in a manner or for an application other than for which the Roxtec system was designed or intended.

Roxtec expressly excludes any implied warranties of merchantability and fitness for a particular purpose and all other express or implied representations and warranties provided by statute or common law. User determines suitability of the Roxtec system for intended use and assumes all risk and liability in connection therewith. In no event shall Roxtec be liable for indirect, consequential, punitive, special, exemplary or incidental damages or losses."



Roxtec International AB, Box 540  
371 23 Karlskrona, Sweden  
+46 455 36 67 00, [www.roxtec.com](http://www.roxtec.com)