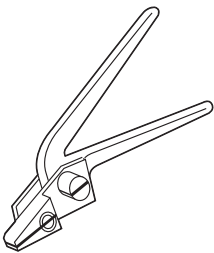
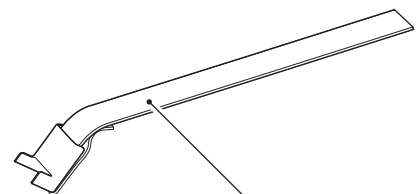
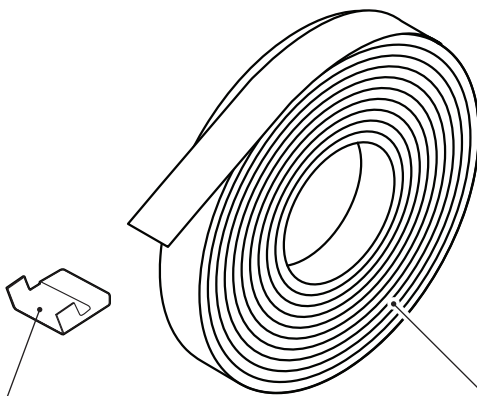


Tools



Type 140 Tightening tool
with cutting function up to 15 mm
GK000000101400

Parts



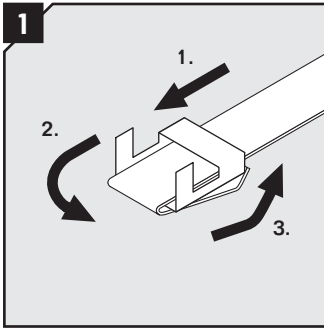
Strap clip (not included)

Strap 25/75

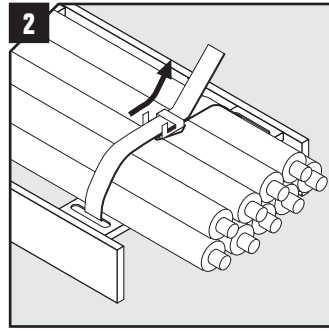
Cable strap

Article number	Color	Dimension (width x thickness)	Length (m)	Material
GK000000101001	gray	15x0.5	25	galvanized
GK000000101002	black	15x0.5	25	stainless steel
GK000000101003	brown	15x0.5	25	non magnetic
GK000000101004	black	08x0.3	75	stainless steel
GK000000201251	brown	08x0.3	75	non magnetic

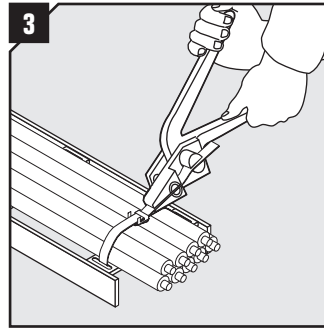
Installation



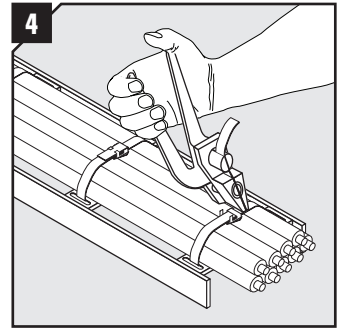
Insert strap into the strap clip.



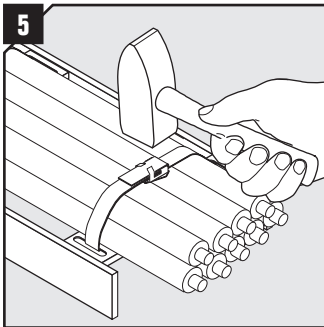
Bend the strap around the cable, through the cable tray and back through the clip.



Tighten strap by hand, apply tightening tool to the clip and tighten strap by means of the movable arm.



When it is tightened, bend the strap over the clip and cut it.



Bend the strap completely. Bend the flaps of the clip over the strap. Secure it by hitting with a hammer.

Note

- For cable straps, start with step 2

DISCLAIMER

"The Roxtec cable entry sealing system ("the Roxtec system") is a modular-based system of sealing products consisting of different components. Each and every one of the components is necessary for the best performance of the Roxtec system. The Roxtec system has been certified to resist a number of different hazards. Any such certification, and the ability of the Roxtec system to resist such hazards, is dependent on all components that are installed as a part of the Roxtec system. Thus, the certification is not valid and does not apply unless all components installed as part of the Roxtec system are manufactured by or under license from Roxtec ("authorized manufacturer"). Roxtec gives no performance guarantee with respect to the Roxtec system, unless (I) all components installed as part of the Roxtec system are manufactured by an authorized manufacturer and (II) the purchaser is in compliance with (a), and (b), below.

(a) During storage, the Roxtec system or part thereof, shall be kept indoors in its original packaging at room temperature.

(b) Installation shall be carried out in accordance with Roxtec installation instructions in effect from time to time.

The product information provided by Roxtec does not release the purchaser of the Roxtec system, or part thereof, from the obligation to independently determine the suitability of the products for the intended process, installation and/or use.

Roxtec gives no guarantee for the Roxtec system or any part thereof and assumes no liability for any loss or damage whatsoever, whether direct, indirect, consequential, loss of profit or otherwise, occurred or caused by the Roxtec systems or installations containing components not manufactured by an authorized manufacturer and/or occurred or caused by the use of the Roxtec system in a manner or for an application other than for which the Roxtec system was designed or intended.

Roxtec expressly excludes any implied warranties of merchantability and fitness for a particular purpose and all other express or implied representations and warranties provided by statute or common law. User determines suitability of the Roxtec system for intended use and assumes all risk and liability in connection therewith. In no event shall Roxtec be liable for indirect, consequential, punitive, special, exemplary or incidental damages or losses."



Roxtec International AB
Box 540, 371 23 Karlskrona, SWEDEN
PHONE +46 455 36 67 00, FAX +46 455 820 12
EMAIL info@roxtec.com, www.roxtec.com