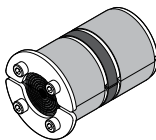
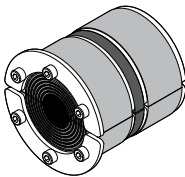


Installation instructions  
Roxtec RS PPS/S

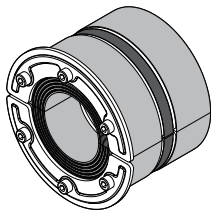
Components



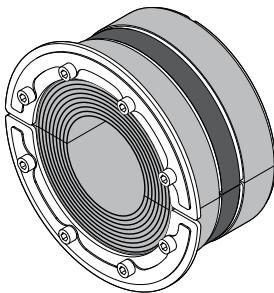
Roxtec RS PPS/S 31-68



Roxtec RS PPS/S 75



Roxtec RS PPS/S 100-125



Roxtec RS PPS/S 150

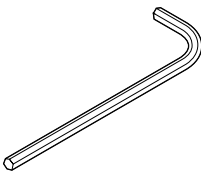


Roxtec Lubricant

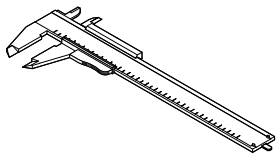
Technical data

Name	Aperture dimension Ø (mm)	For cable/pipe Ø (mm)	Torque (Nm)	Tool size (mm)
RS PPS/S 31	31 – 32	4 – 17	~ 1	2.5
RS PPS/S 43	43 – 45	4 – 23	~ 4	4
RS PPS/S 50	50 – 52	8 – 30	~ 4	4
RS PPS/S 68	68 – 70	26 – 48	~ 4	4
RS PPS/S 75	75 – 77	24 – 54	~ 4	4
RS PPS/S 100	100 – 102	48 – 70	~ 4	4
RS PPS/S 125	125 – 127	66 – 98	~ 7	5
RS PPS/S 150	150 – 152	93 – 119	~ 7	5

Tools

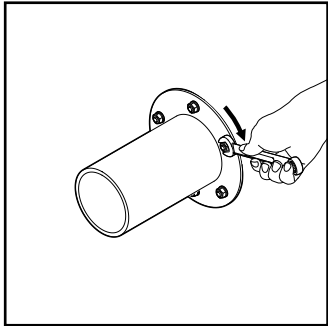


Allen key (not included)



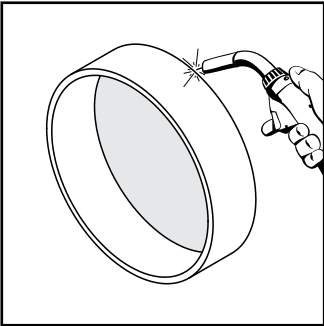
Caliper (not included)

Installation of bolted sleeve



Attach the sleeve to the structure using suitable sealing method and suitable fasteners.

Installation in a welded sleeve



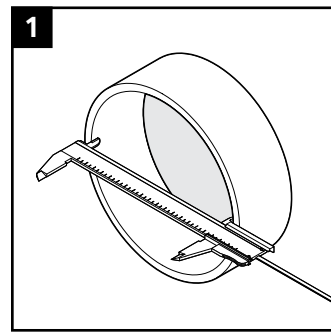
Weld the Roxtec sleeve to the structure.

Roxtec guideline documents

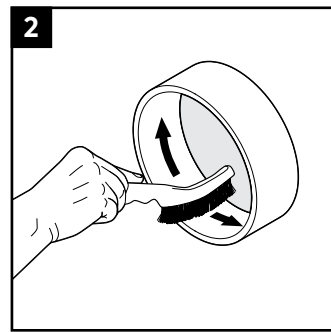


For further information, Roxtec guideline documents are available at [roxtec.com](https://www.roxtec.com).

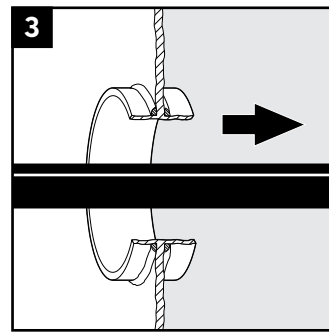
## Installation



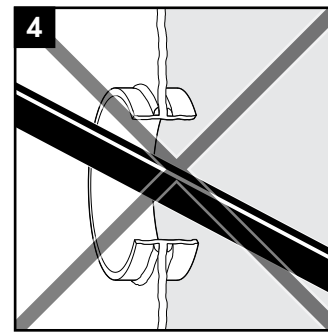
Make or verify an aperture.



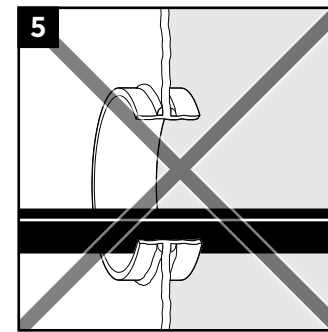
Clean the aperture.



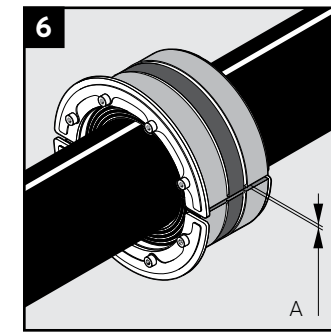
Pull the cable/pipe straight and centered through the aperture.



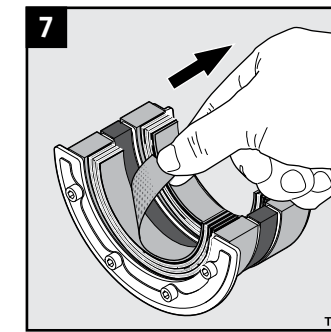
Not acceptable.



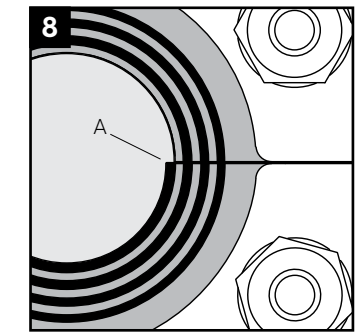
Not acceptable.



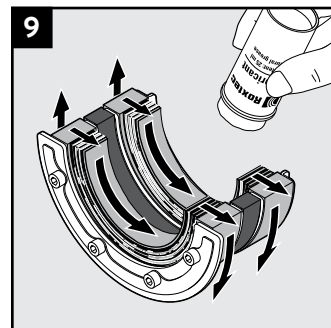
Achieve a 0-1.0 mm gap (A) between the two halves when held against the pipe.



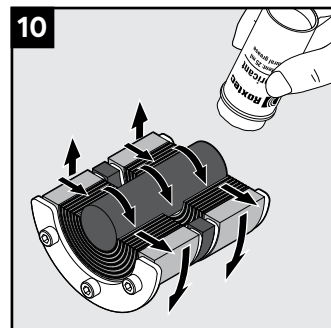
Adapt the seal by peeling off layers.



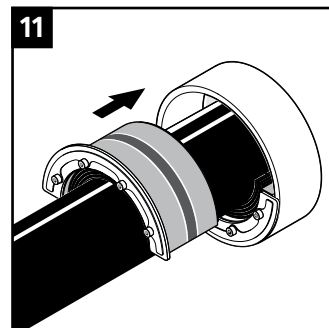
The number of layers may not differ (A) by more than one between the corresponding seal halves.



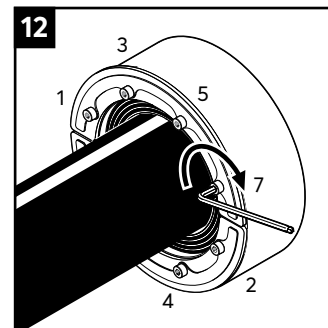
Lubricate the inside and the outside sealing surfaces with Roxtec Lubricant.



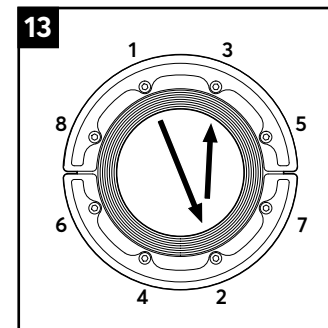
Lubricate the sealing surfaces of any spare seal. Do not remove the core.



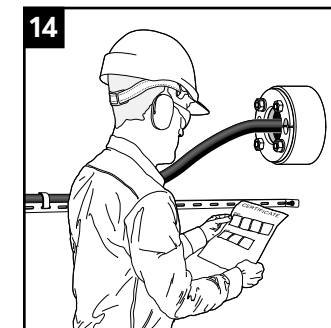
Insert the halves into the aperture.



Tighten the bolts crosswise in small steps to firm compression.



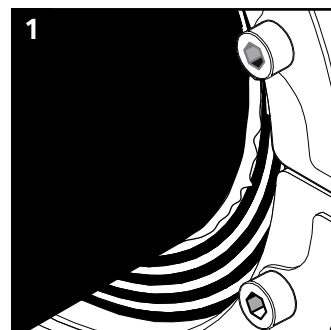
Tightening order.



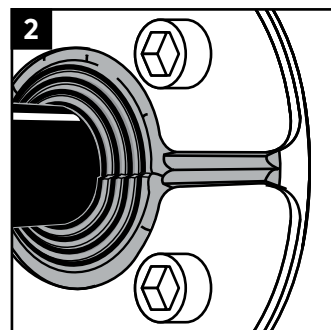
Check additional documentation, if applicable.

## Check compression

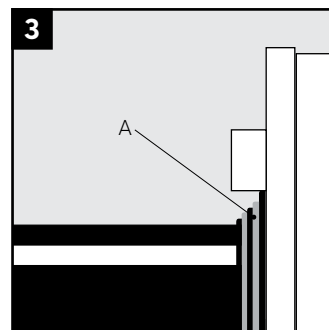
The transit is tight when good compression is achieved.



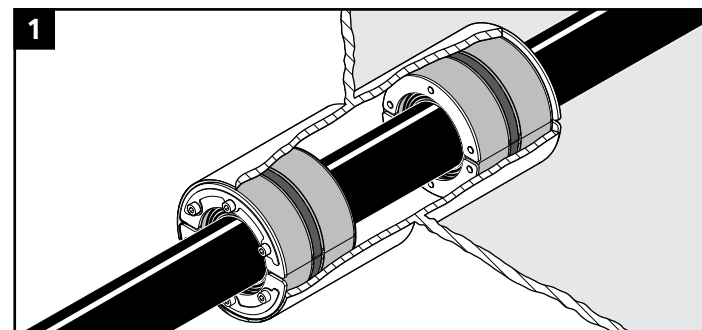
Excess lubricant is visible after compression.



The rubber bulges between the fittings.

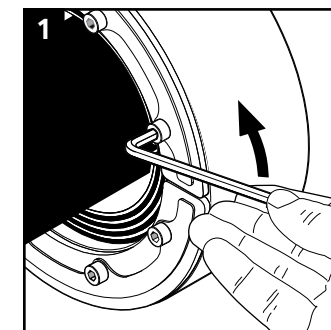


Rubber layers (A) bulge outwards.

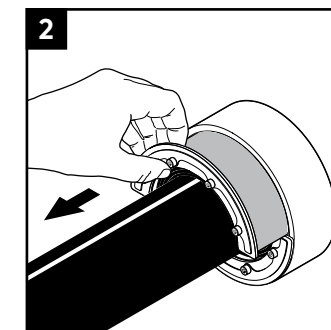


For sustained watertightness after fire exposure, mount two RS PPS/S seals back to back in a longer sleeve.

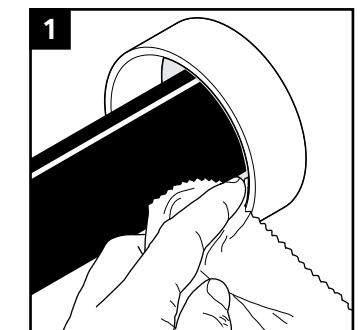
## Disassembly



Untighten the screws crosswise in small steps.



Remove the seal.



Clean the exposed sealing surfaces. Continue the reinstallation.

## Note

- For optimum reliability, wait 24 hours or longer after installation before exposing the pipe to strain or pressure.
- The pipe shall be parallel to the sleeve/aperture.
- A pipe with a considerable weight needs to be supported to prevent damage or subsidence to the seal.
- Approvals or certificates may include amendments or limitations related to this application.
- A seal with core is spare capacity.
- The latest version of this and related documents are found at [roxtec.com](http://roxtec.com).
- Sustained watertightness after fire exposure applications require a longer sleeve.

## Disclaimer

"The Roxtec cable and pipe entry sealing system ('the Roxtec system') is a modular-based system of sealing products consisting of different components. Each and every one of the components is necessary for the best performance of the Roxtec system. The Roxtec system has been certified to resist a number of different hazards. Any such certification, and the ability of the Roxtec system to resist such hazards, is dependent on all components that are installed as a part of the Roxtec system. Thus, the certification is not valid and does not apply unless all components installed as part of the Roxtec system are manufactured by or under license from Roxtec ('authorized manufacturer'). Roxtec gives no performance guarantee with respect to the Roxtec system, unless (I) all components installed as part of the Roxtec system are manufactured by an authorized manufacturer and (II) the purchaser is in compliance with (a), and (b), below.

(a) During storage, the Roxtec system or part thereof, shall be kept indoors in its original packaging at room temperature.

(b) Installation shall be carried out in accordance with Roxtec installation instructions in effect from time to time.

The product information provided by Roxtec does not release the purchaser of the Roxtec system, or part thereof, from the obligation to independently

determine the suitability of the products for the intended process, installation and/or use.

Roxtec gives no guarantee for the Roxtec system or any part thereof and assumes no liability for any loss or damage whatsoever, whether direct, indirect, consequential, loss of profit or otherwise, occurred or caused by the Roxtec systems or installations containing components not manufactured by an authorized manufacturer and/or occurred or caused by the use of the Roxtec system in a manner or for an application other than for which the Roxtec system was designed or intended.

Roxtec expressly excludes any implied warranties of merchantability and fitness for a particular purpose and all other express or implied representations and warranties provided by statute or common law. User determines suitability of the Roxtec system for intended use and assumes all risk and liability in connection therewith. In no event shall Roxtec be liable for indirect, consequential, punitive, special, exemplary or incidental damages or losses.

The Roxtec products are offered and sold in accordance with the conditions of the Roxtec General Terms of Sales. The latest version of the Roxtec General Terms of Sales can be found and downloaded from [roxtec.com/general-terms-of-sales](http://roxtec.com/general-terms-of-sales)."



Roxtec International AB  
Box 540, 371 23 Karlskrona, SWEDEN  
+46 455 36 67 00, [info@roxtec.com](mailto:info@roxtec.com)  
[www.roxtec.com](http://www.roxtec.com)