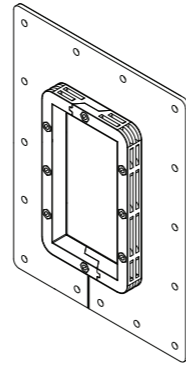
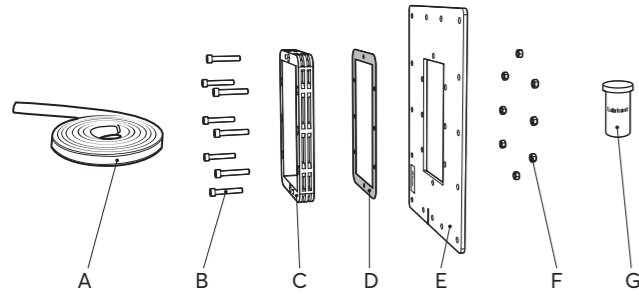


Installation instructions Roxtec C KFO 6x1 with flange

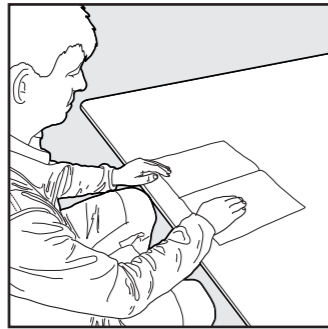


Components



- A. Sealing strip
- B. Screws
- C. Roxtec KFO frame
- D. Gasket
- E. Flange
- F. Nuts
- G. Roxtec Lubricant

Additional information



Scan QR code or visit roxtec.com for additional information such as drawings, aperture, videos, ratings and certificates.

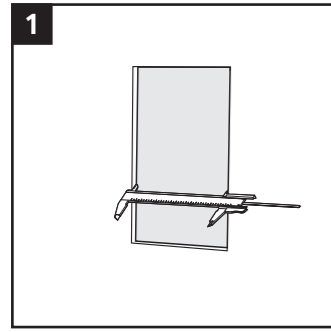
Tools

- Saw (not included)
- Spanner (not included)
- Allen key (not included)

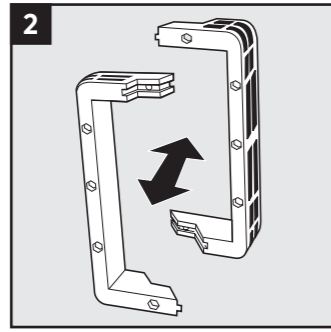
Note

- To be used with Roxtec CM components.
- Approvals or certificates may include amendments or limitations related to this application.
- The latest version of this and related documents are found at roxtec.com.

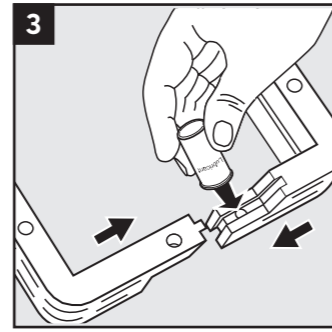
Frame installation



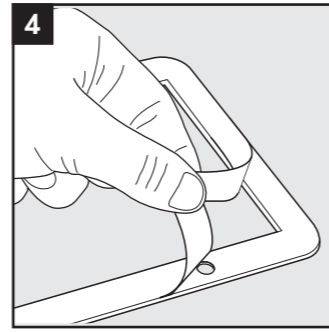
1 Make or verify an aperture.



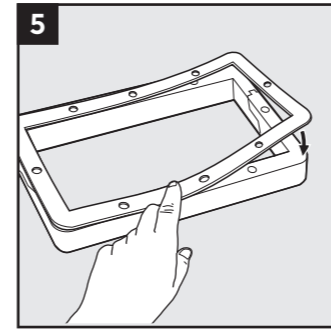
2 Divide the frame into two pieces.



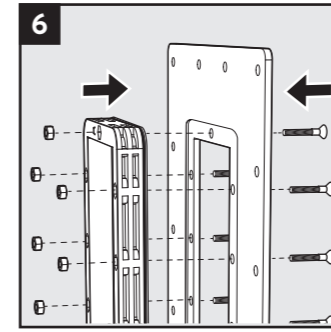
3 Lubricate all end surfaces with any Roxtec Lubricant. Put the frame parts together again.



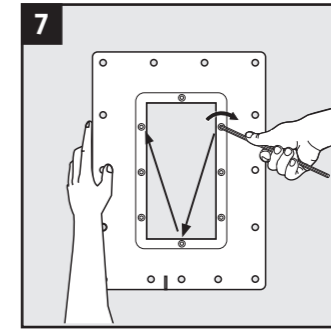
4 Remove the protection foil from the gasket.



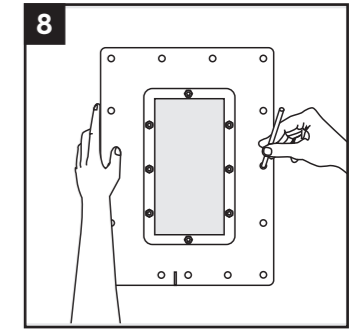
5 Apply the adhesive gasket onto the frame part that will face the flange. Do not apply it on the side with the recessed holes.



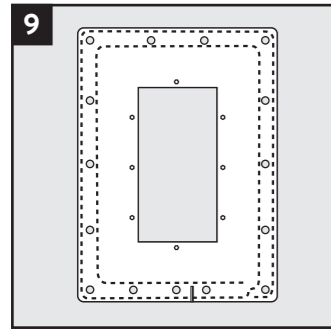
6 Place the frame part with the gasket facing the flange. Recessed bolt holes must point outwards, away from the flange.



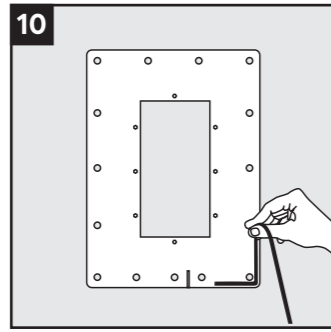
7 Tighten the Allen screws crosswise in small steps to approx. 7 Nm.



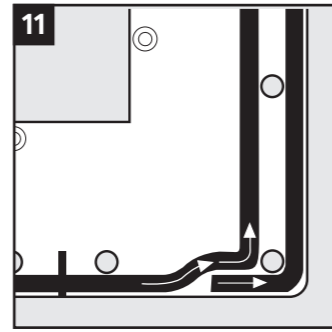
8 Use the flange to mark where to drill the holes for the flange, and drill the holes.



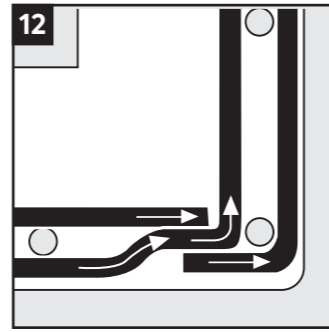
9 The sealing strip should be attached along the dotted line shown in the illustration.



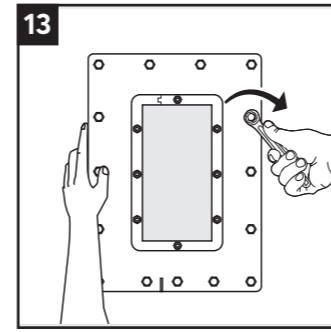
10 Remove the protecting film from the sealing strip. Fasten the sealing strip. Start on the outer edge at the bottom of the flange.



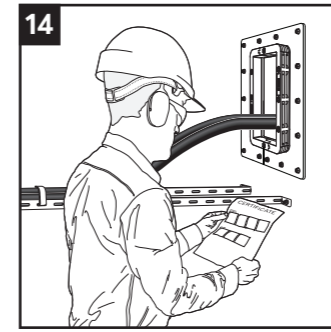
11 When the outer revolution close to the edge is finished, continue on the inside beside the holes in the flange.



12 At the end, there will be two revolutions of sealing strip. The sealing strip prevents intrusion of dust and water.

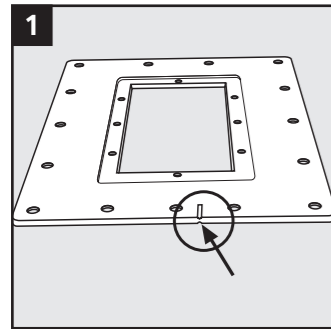


13 Attach the frame to the structure. Tighten the screws crosswise in small steps.

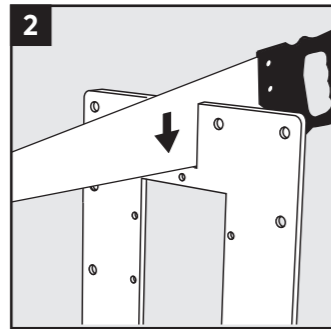


14 Check additional documentation, if applicable.

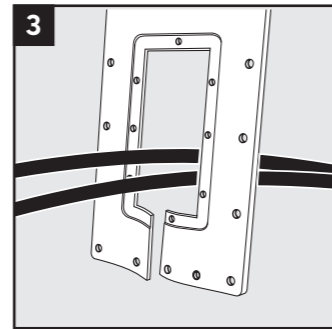
Frame installation for pre-routed cables



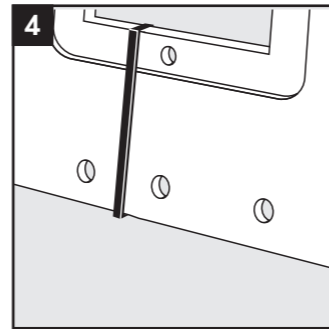
1 Locate the mark at the bottom of the flange.



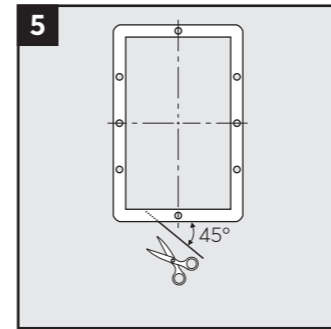
2 Saw through the short side of the flange where the mark is.



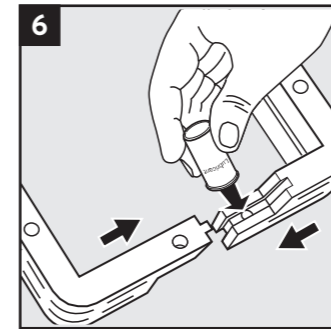
3 Place the flange around the cables.



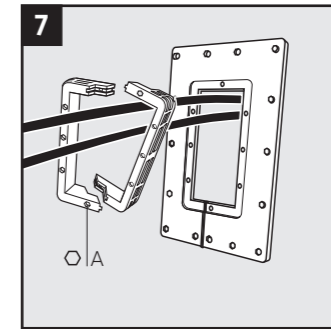
4 Cut off approx. 10 cm of sealing strip and press it down the cut to seal the flange.



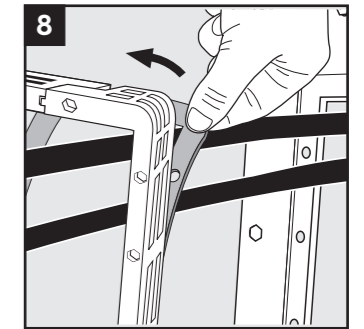
5 Cut the gasket according to the picture.



6 Lubricate all end surfaces with any Roxtec Lubricant. Put the frame parts together again.



7 Reconnect the frame part pieces round the cables. Recessed bolt holes must point outwards (A), away from the flange.



8 Attach the adhesive gasket to the side of the frame which will face the flange.

After installation inspection

- Is the gasket aligned and compressed?
- Are the screws evenly tightened?
- Is the frame aperture clear for routing cables/pipes?

Disclaimer

"The Roxtec cable and pipe entry sealing system ('the Roxtec system') is a modular-based system of sealing products consisting of different components. Each and every one of the components is necessary for the best performance of the Roxtec system. The Roxtec system has been certified to resist a number of different hazards. Any such certification, and the ability of the Roxtec system to resist such hazards, is dependent on all components that are installed as a part of the Roxtec system. Thus, the certification is not valid and does not apply unless all components installed as part of the Roxtec system are manufactured by or under license from Roxtec (authorized manufacturer). Roxtec gives no performance guarantee with respect to the Roxtec system, unless (i) all components installed as part of the Roxtec system are manufactured by an authorized manufacturer and (ii) the purchaser is in compliance with (a), and (b), below.

(a) During storage, the Roxtec system or part thereof, shall be kept indoors in its original packaging at room temperature.

(b) Installation shall be carried out in accordance with Roxtec installation instructions in effect from time to time.

The product information provided by Roxtec does not release the purchaser of the Roxtec system, or part thereof, from the obligation to independently

determine the suitability of the products for the intended process, installation and/or use.

Roxtec gives no guarantee for the Roxtec system or any part thereof and assumes no liability for any loss or damage whatsoever, whether direct, indirect, consequential, loss of profit or otherwise, occurred or caused by the Roxtec systems or installations containing components not manufactured by an authorized manufacturer and/or occurred or caused by the use of the Roxtec system in a manner or for an application other than for which the Roxtec system was designed or intended.

Roxtec expressly excludes any implied warranties of merchantability and fitness for a particular purpose and all other express or implied representations and warranties provided by statute or common law. User determines suitability of the Roxtec system for intended use and assumes all risk and liability in connection therewith. In no event shall Roxtec be liable for indirect, consequential, punitive, special, exemplary or incidental damages or losses.

The Roxtec products are offered and sold in accordance with the conditions of the Roxtec General Terms of Sales. The latest version of the Roxtec General Terms of Sales can be found and downloaded from roxtec.com/general-terms-of-sales.



Roxtec International AB
Box 540, 371 23 Karlskrona, SWEDEN
+46 455 36 67 00, info@roxtec.com
www.roxtec.com