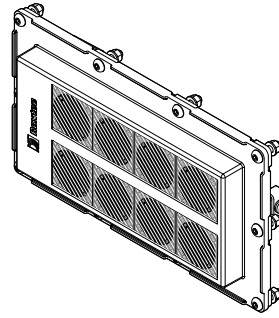


Installation instructions

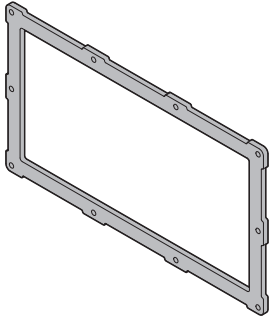
Roxtec ComSeal BG™



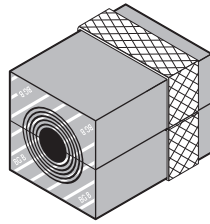
Safety information

Roxtec recommends that all installations are performed without facility operation. Follow national regulations and installation codes. Any action affecting the routed service should be performed according to manufacturer recommendations.

Components



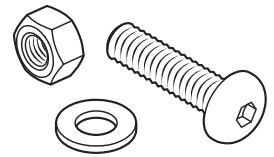
Gasket



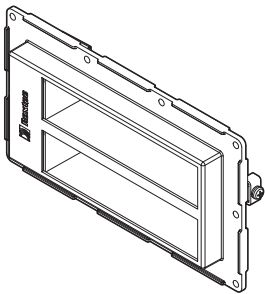
Roxtec CM BG B module



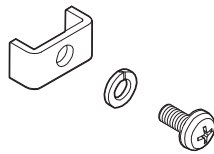
Roxtec Lubricant



Fasteners

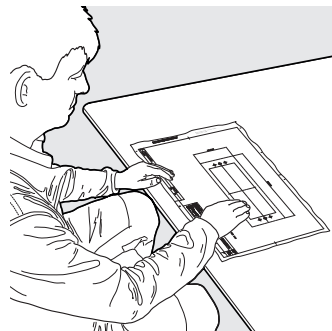


Roxtec ComSeal 32 BG frame



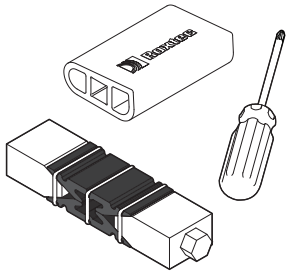
Fasteners for protective bonding conductor

Additional information

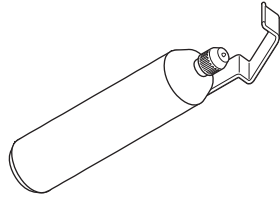


Scan QR code or visit roxtec.com for additional information such as drawings, aperture, videos, ratings and certificates.

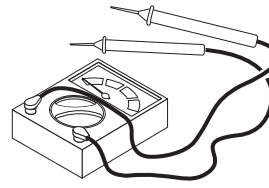
Tools



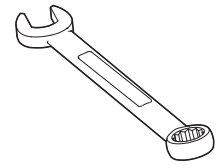
Roxtec installation tools
(not included)



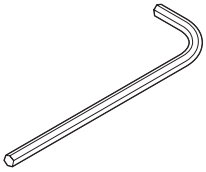
Cable stripper
Recommended by the cable
manufacturer
(not included)



Continuity tester
(not included)



Spanners
8 mm and 13 mm
(not included)



Allen key 3 mm
(not included)

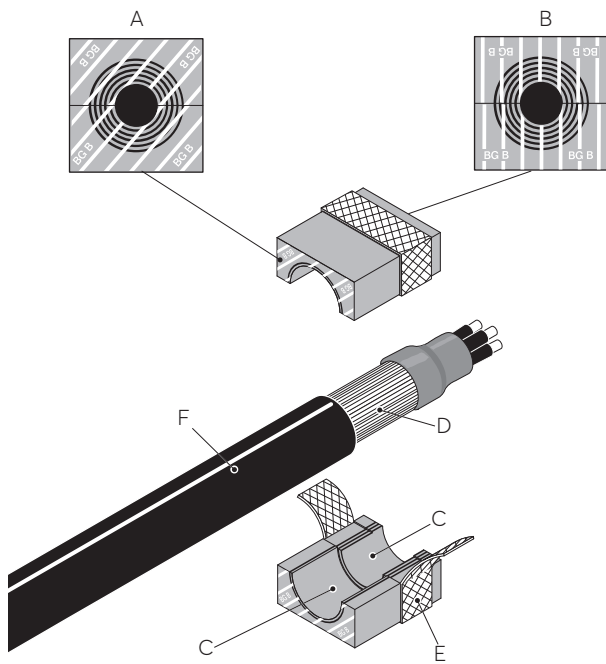
Technical data

Name	External dimensions WxHxD (mm)	For cable/pipe Ø (mm)	Braid cross-section/cable (mm ²)	Approximately equivalent AWG
CM 20w40 BG B	40 x 20 x 40	3.5 – 16.5	4	11
CM 30w40 BG B	40 x 30 x 40	10 – 25	13	6
CM 40 10–32 BG B	40 x 40 x 40	9.5 – 32.5	21	4
CM 10w40/0 BG B	40 x 10 x 40	0	–	–
CM 40/0 BG B	40 x 40 x 40	0	–	–

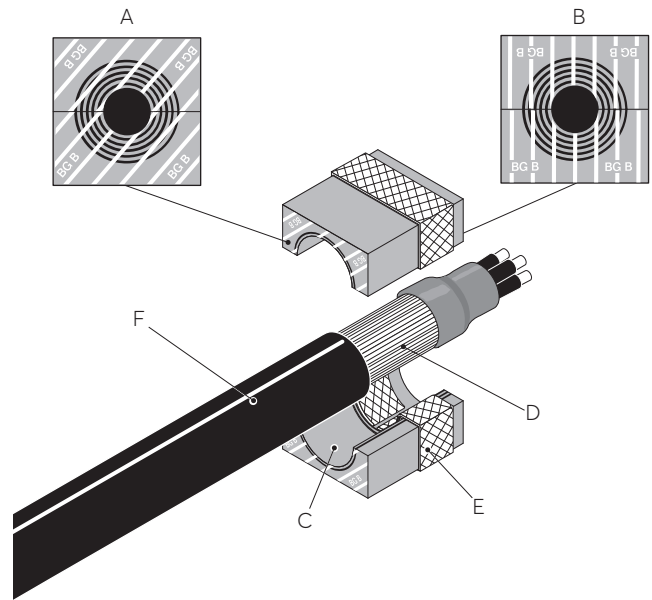
The diameter range of the modules indicates the smallest diameter of the exposed cable armor to the largest diameter of the cable jacket. Modules with core can be used as spare parts.

Cable placement in module

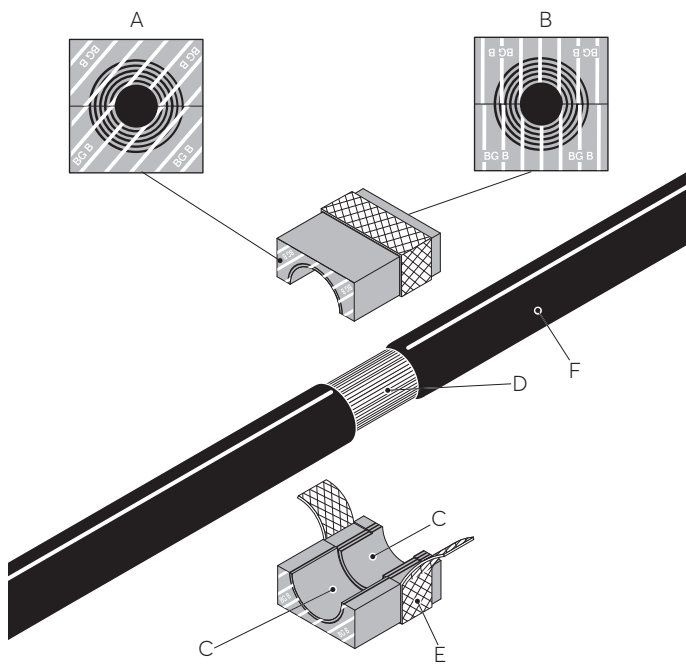
- A. Environmental side.
- B. Termination/interior side.
- C. Removable layers.
- D. Cable armor.
- E. Bonding/grounding braid.
- F. Cable jacket.



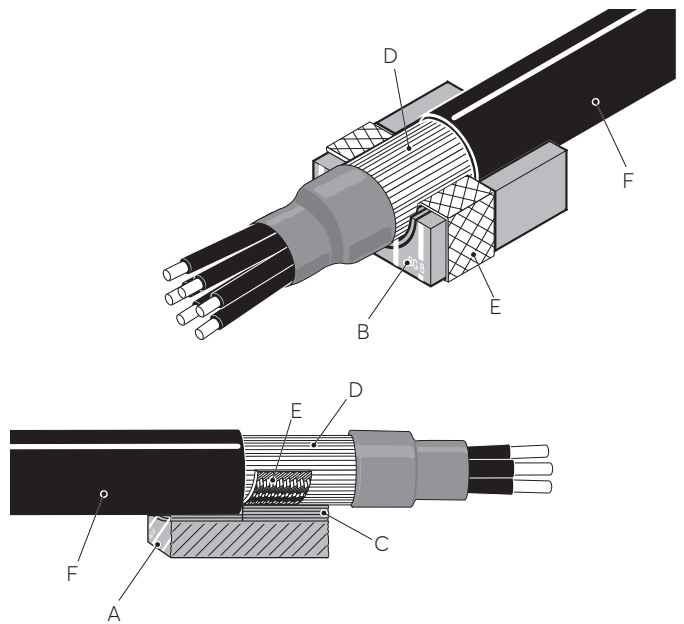
Cable with terminated armor.



The braid is folded in.

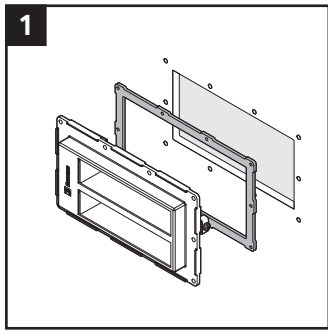


Cable with pass-through armor.

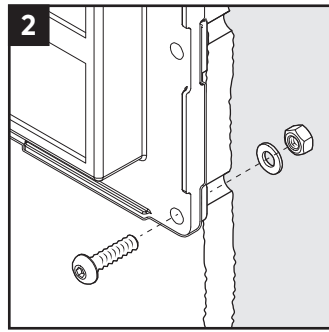


Cable placement in the module half. The cable jacket edge shall be in contact with the edge of the removable layers.

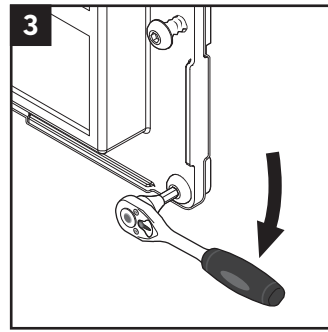
Installation



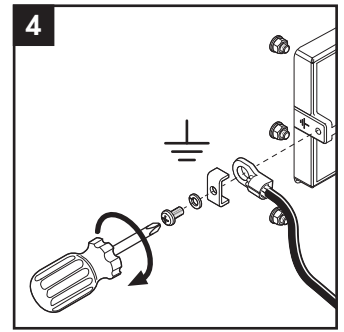
Place the frame and gasket onto the structure.



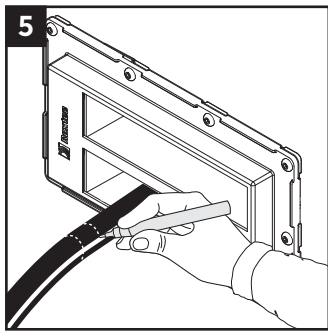
Attach the frame using the supplied screws, washers and nuts.



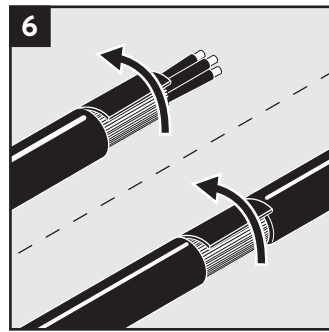
Tighten the screws crosswise in small steps to full stop.



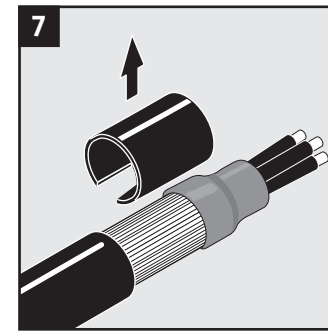
Attach the protective bonding conductor to the earthing terminal.



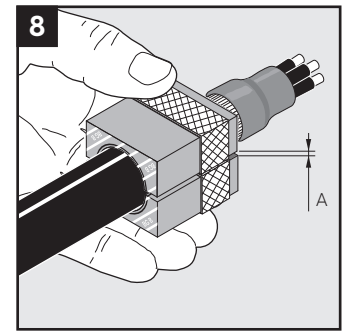
Mark where the outer jacket is to be removed to fit the module bread.



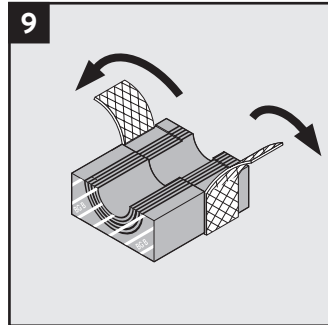
Remove the outer jacket and any plastic foil. The cable armor shall be clean and conductive.



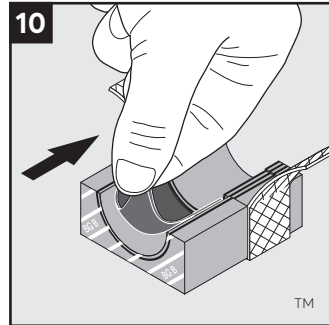
Secure the end of the cable armor.



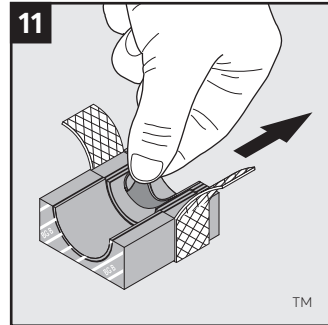
Achieve a 0.1-1.0 mm (A) gap between the two module halves when held against the cable.



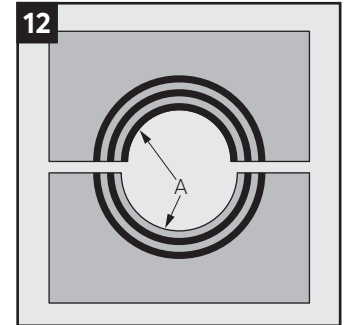
Remove the core and fold out the braid. Also see section for modules with multiple openings.



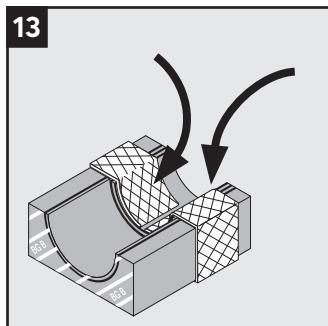
Adapt the layers that are in contact with the cable jacket.



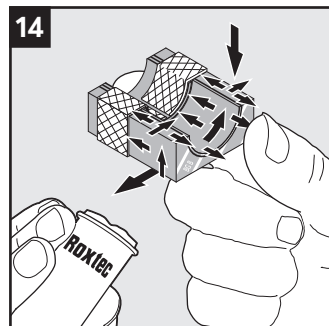
Adapt the layers that are in contact with the cable armor.



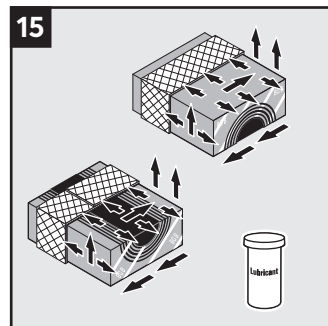
The number of layers may not differ (A) by more than one between the corresponding module halves.



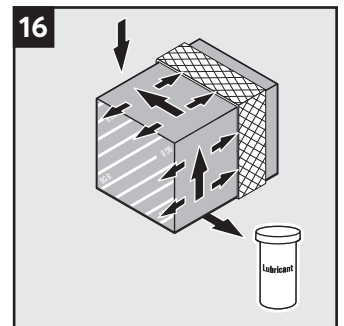
Fold the braid tightly inside the module half. Check the gap.



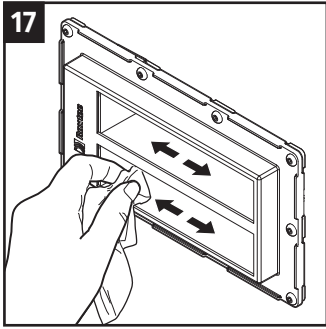
Lubricate the sealing surfaces of all modules with Roxel Lubricant. Avoid excess lubricant on the braid.



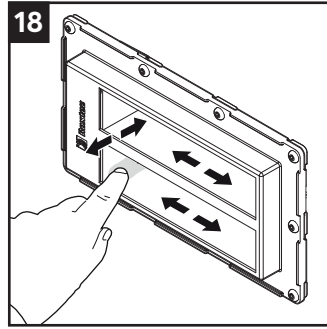
Lubricate the sealing surfaces of the spare modules. Do not remove the core.



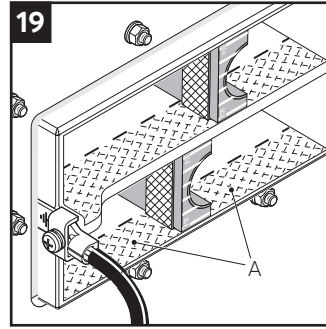
Lubricate the sealing surfaces of the solid modules.



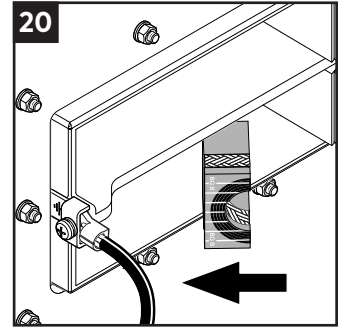
17 Clean the frame.



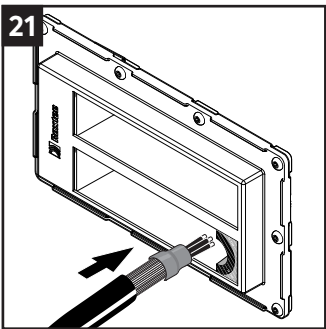
18 Lubricate the inside surfaces of the frame all around, especially into the corners.



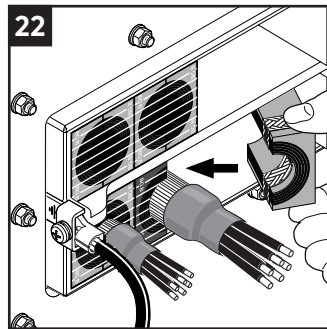
19 Lubricate the area (A) that will be in contact with the braid sparsely.



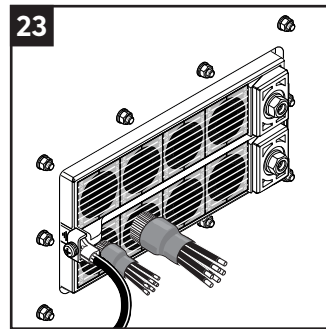
20 Insert the modules at an angle.



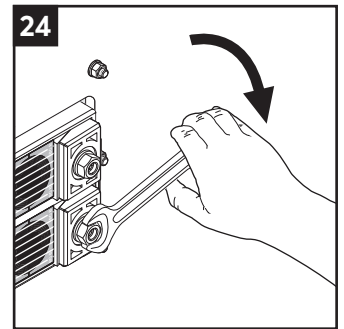
21 Insert the cables.



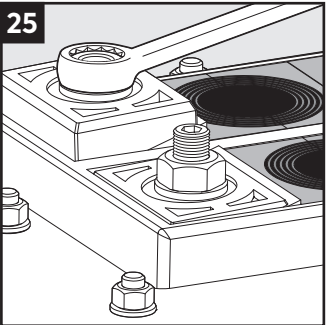
22 Fill up the transit. The cable braid shall be visible outside the module.



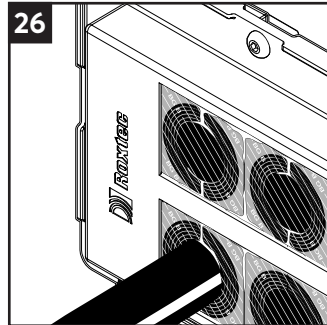
23 Fill the openings completely.



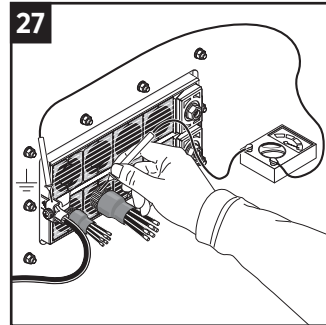
24 Tighten the two nuts crosswise in small steps.



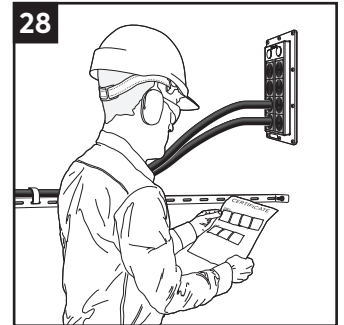
25 The transit is sealed when the plastic washers are flush with the frame.



26 Visible excess lubricant indicates a tight seal.

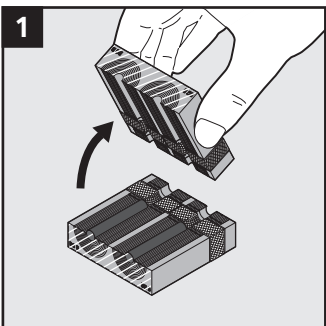


27 Electrical continuity testing is recommended.

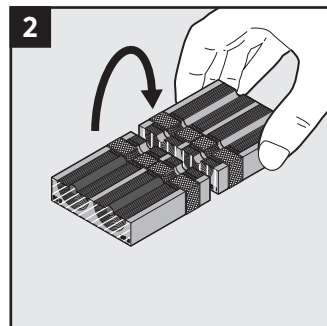


28 Check additional documentation, if applicable.

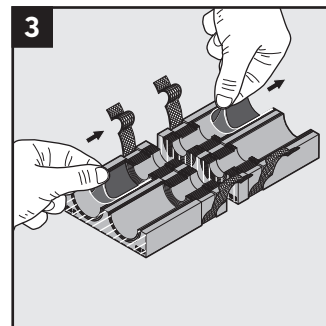
Modules with multiple openings



1 For modules with multiple openings, take extra care when peeling layers.

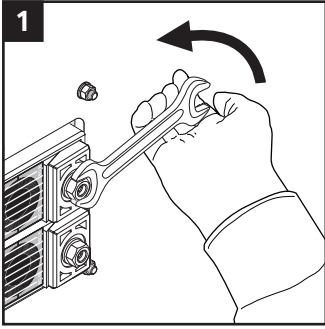


2 Folding the halves like this will line up corresponding openings.

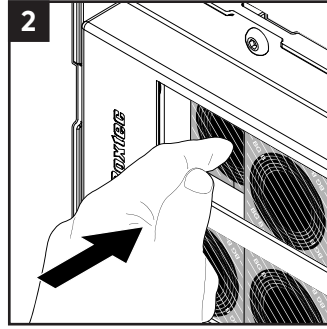


3 Adapt one opening at a time by removing layers.

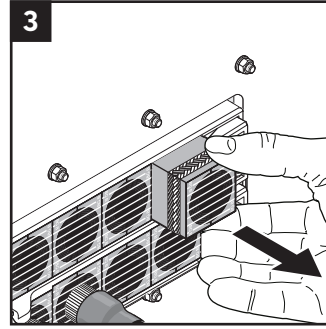
Disassembly and reinstallation



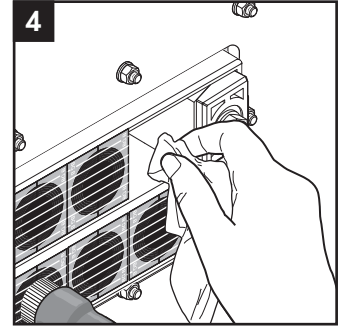
Loosen the nut.



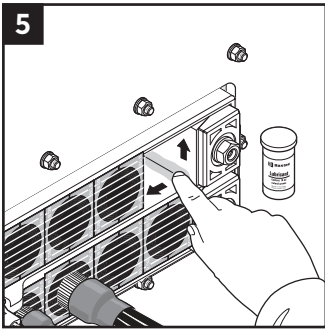
Remove the modules required by pushing them out.



Remove the modules from the frame.



The inside surfaces of the exposed packing space shall be clean and conductive.



Lubricate the inside surfaces, especially in the corners. Continue the reinstallation.

Note

- Integrated environmental sealing system for bonding and grounding applications. For use with armored/shielded cables or pipes.
- For non-armored/shielded cables, the cable jacket is not removed. No bonding/grounding functionality will be achieved for the cable.
- For optimum reliability, wait 24 hours or longer after installation before exposing the cables or pipes to strain or pressure.
- Suggestions for cable preparations are available on www.roxtec.com.
- Cables shall go straight through the frame.
- To be used with: Roxtec CM BG B modules.
- To simplify installation in frames with more than one opening, fill all openings before tightening the compression units.
- The final complete bonding/grounding installation has to comply with applicable codes and regulations.
- Approvals or certificates may include amendments or limitations related to this application.
- The latest version of this and related documents are found at roxtec.com.

Disclaimer

"The Roxtec cable and pipe entry sealing system ('the Roxtec system') is a modular-based system of sealing products consisting of different components. Each and every one of the components is necessary for the best performance of the Roxtec system. The Roxtec system has been certified to resist a number of different hazards. Any such certification, and the ability of the Roxtec system to resist such hazards, is dependent on all components that are installed as a part of the Roxtec system. Thus, the certification is not valid and does not apply unless all components installed as part of the Roxtec system are manufactured by or under license from Roxtec ('authorized manufacturer'). Roxtec gives no performance guarantee with respect to the Roxtec system, unless (I) all components installed as part of the Roxtec system are manufactured by an authorized manufacturer and (II) the purchaser is in compliance with (a), and (b), below.

(a) During storage, the Roxtec system or part thereof, shall be kept indoors in its original packaging at room temperature.

(b) Installation shall be carried out in accordance with Roxtec installation instructions in effect from time to time.

The product information provided by Roxtec does not release the purchaser of the Roxtec system, or part thereof, from the obligation to independently

determine the suitability of the products for the intended process, installation and/or use.

Roxtec gives no guarantee for the Roxtec system or any part thereof and assumes no liability for any loss or damage whatsoever, whether direct, indirect, consequential, loss of profit or otherwise, occurred or caused by the Roxtec systems or installations containing components not manufactured by an authorized manufacturer and/or occurred or caused by the use of the Roxtec system in a manner or for an application other than for which the Roxtec system was designed or intended.

Roxtec expressly excludes any implied warranties of merchantability and fitness for a particular purpose and all other express or implied representations and warranties provided by statute or common law. User determines suitability of the Roxtec system for intended use and assumes all risk and liability in connection therewith. In no event shall Roxtec be liable for indirect, consequential, punitive, special, exemplary or incidental damages or losses.

The Roxtec products are offered and sold in accordance with the conditions of the Roxtec General Terms of Sales. The latest version of the Roxtec General Terms of Sales can be found and downloaded from roxtec.com/general-terms-of-sales.



Roxtec International AB
Box 540, 371 23 Karlskrona, SWEDEN
+46 455 36 67 00, info@roxtec.com
www.roxtec.com