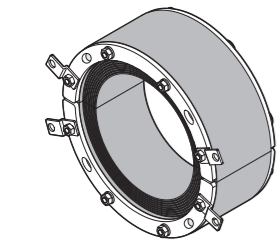
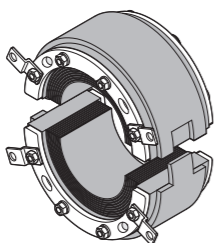


Installation instructions  
Roxtec RS UG™ seal

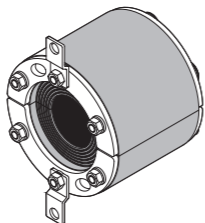
Components



Roxtec RS 225 UG



Roxtec RS 160 UG

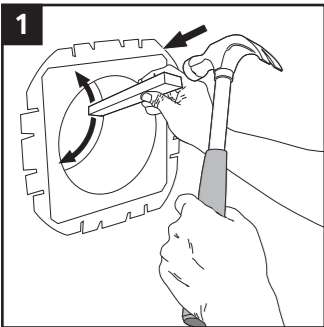


Roxtec RS 70 UG



Roxtec Lubricant

Installation in a Roxtec knock-out sleeve



Before routing cables or pipes, knock out the lid and remove any residue.

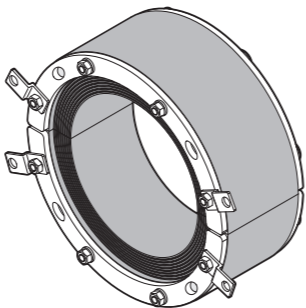
Additional information



Additional information is available, such as drawings, apertures, videos, ratings and certificates.



Scan QR code or visit [roxtec.com](https://roxtec.com) for additional information.



Safety information

Roxtec recommends that all installations are performed without facility operation. Follow national regulations and installation codes. Any action affecting the routed service should be performed according to manufacturer recommendations.

Technical data

The amount of torque needed to compress the seal depends on several things, e.g cable or pipe size, amount of used lubricant, aperture size or material in the cable sheath, etc.

Name	Aperture dimension Ø (mm)	For cable/pipe Ø (mm)	Torque (Nm)	Tool size (mm)
RS 70 UG	70 – 75	9 – 33	max7	10
RS 75 UG	75 – 80	9 – 33	max7	10
RS 80 UG	80 – 85	9 – 33	max7	10
RS 90 UG	90 – 95	24 – 53	max7	10
RS 95 UG	95 – 100	24 – 53	max7	10
RS 100 (4") UG	100 – 105	39 – 63	max7	10
RS 100 (4") 24–53 UG	100 – 105	24 – 53	max7	10
RS 105 UG	105 – 110	39 – 63	max7	10
RS 110 UG	110 – 115	39 – 63	max7	10
RS 125 (5") UG	125 – 130	55 – 88	max7	10
RS 130 UG	130 – 135	55 – 88	max7	10
RS 135 55–88 UG	135 – 140	55 – 88	max7	10
RS 135 UG	135 – 140	65 – 98	max7	10
RS 140 UG	140 – 145	65 – 98	max7	10
RS 145 UG	145 – 150	65 – 98	max7	10
RS 150 UG	150 – 155	80 – 113	max7	10
RS 153 (6") UG	152.5 – 157.5	80 – 113	max7	10
RS 155 UG	155 – 160	80 – 113	max7	10
RS 160 UG	160 – 165	80 – 113	max7	10
RS 185 UG	185 – 190	114 – 148	max7	10
RS 190 UG	190 – 195	114 – 148	max7	10
RS 195 UG	195 – 200	114 – 148	max7	10
RS 200 (8") UG	200 – 205	130 – 163	max7	10
RS 205 UG	205 – 210	130 – 163	max7	10
RS 210 UG	210 – 215	130 – 163	max7	10
RS 225 UG	225 – 230	146 – 179	max17	13
RS 230 UG	230 – 235	146 – 179	max17	13
RS 235 UG	235 – 240	146 – 179	max17	13
RS 250 UG	250 – 255	171 – 204	max17	13
RS 255 UG	255 – 260	171 – 204	max17	13
RS 260 UG	260 – 265	171 – 204	max17	13

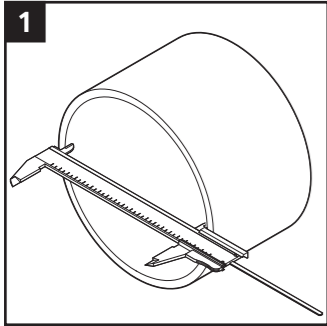
Tools

- Spanner (not included)
- Caliper (not included)
- Hammer (not included)
- Brush (not included)

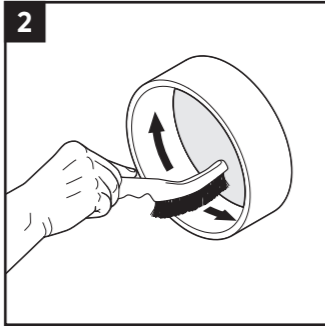
To be installed in

- Welded sleeves
- Bolted sleeves
- Cast-in sleeves
- Core drilled holes
- Non-perpendicular holes

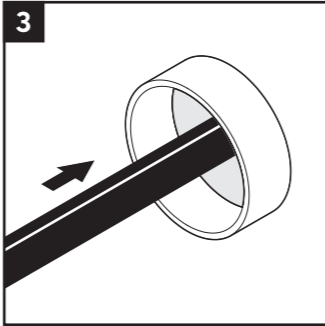
## Installation



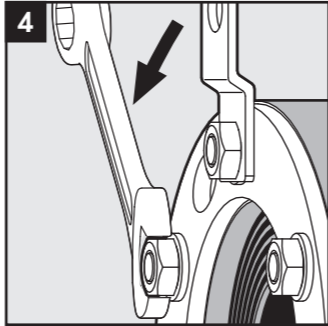
Make or verify an aperture.



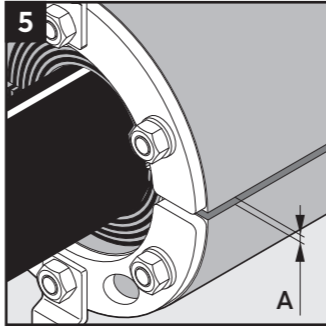
Clean the aperture.



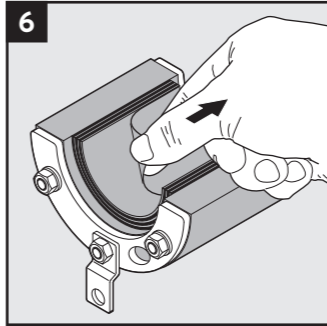
Pull the cable/pipe straight and centered through the aperture.



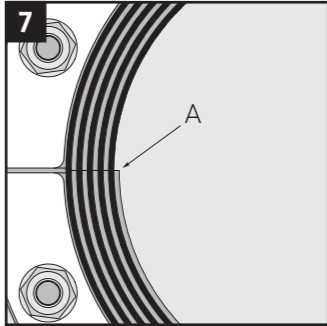
Loosen all the nuts.



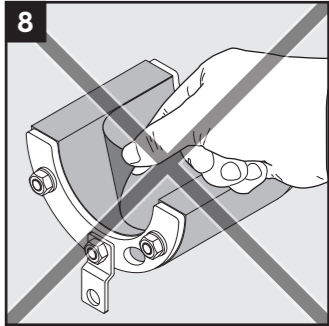
Achieve a 0-1.0 mm (A) gap between the two halves when held against the cable/pipe.



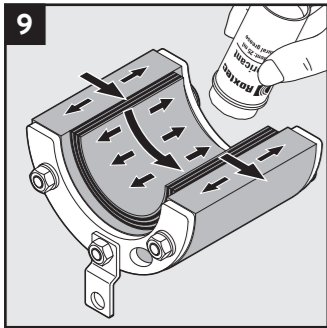
Adapt the RS UG seal by peeling off layers.



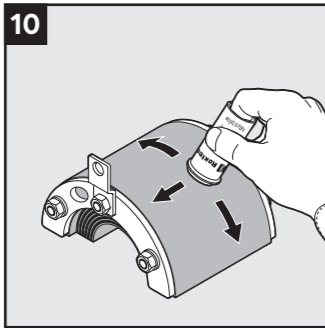
The number of layers may not differ (A) by more than one between the corresponding seal halves.



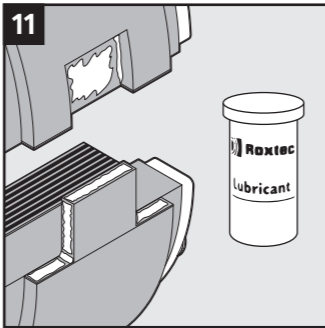
Do not remove the last layer.



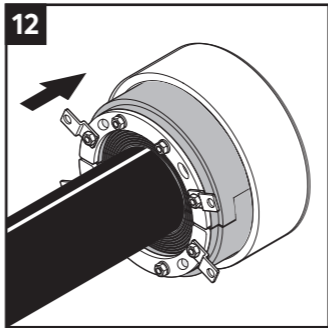
Lubricate the inside sealing surfaces with Roxtec Lubricant.



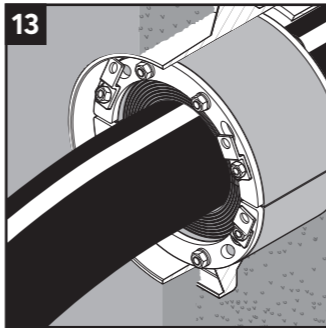
Lubricate the outer sealing surfaces sparsely with Roxtec Lubricant.



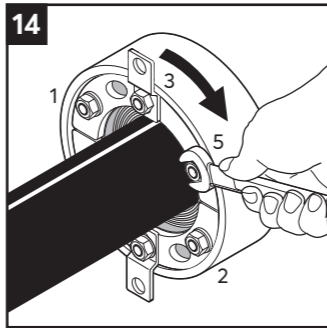
Lubricate sharp corners thoroughly.



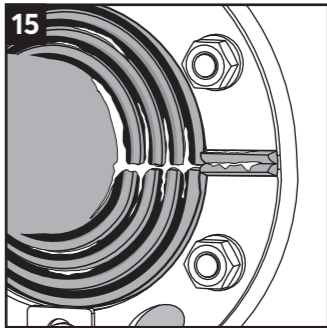
Insert the halves into the sleeve.



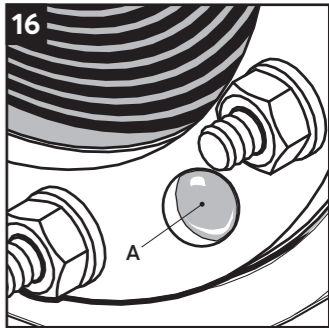
Fold or remove the tabs to insert the seal further (see note).



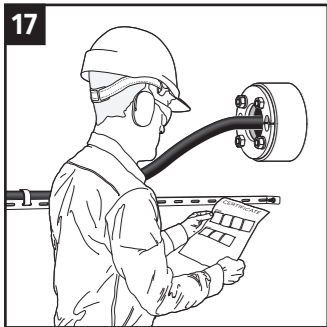
Firmly tighten the nuts crosswise in small steps.



Bulging rubber and visible protruding lubricant indicate a tight seal.



The inner rubber part shall create a visible bulge (A) in each hole.



Check additional documentation, if applicable.

### After installation inspection

- Are the screws tightened evenly?
- Are the layers peeled correctly?
- Is lubricant protruding?
- Is the rubber bulging?

### Note

- An RS UG seal with center core can be used as spare capacity.
- Wait 24 hours after installation before exposing the cables/pipes to strain or pressure.
- Cables/pipes shall be parallel to the sleeve/aperture.
- Cable/pipe with a considerable weight needs to be supported to prevent damage or subsidence to the seal.
- Do not peel off the last rubber layer of each sealing half.
- Tabs (stop flanges) can be used as a help during installation to make sure all sealing parts are fully inserted inside the aperture. There are no requirements for them to be used or to be screwed down to the structure.
- Approvals or certificates may include amendments or limitations related to this application.
- The latest version of this and related documents are found at roxtec.com.

### Disclaimer

\*The Roxtec cable and pipe entry sealing system ('the Roxtec system') is a modular-based system of sealing products consisting of different components. Each and every one of the components is necessary for the best performance of the Roxtec system. The Roxtec system has been certified to resist a number of different hazards. Any such certification, and the ability of the Roxtec system to resist such hazards, is dependent on all components that are installed as a part of the Roxtec system. Thus, the certification is not valid and does not apply unless all components installed as part of the Roxtec system are manufactured by or under license from Roxtec (authorized manufacturer). Roxtec gives no performance guarantee with respect to the Roxtec system, unless (I) all components installed as part of the Roxtec system are manufactured by an authorized manufacturer and (II) the purchaser is in compliance with (a), and (b), below.

(a) During storage, the Roxtec system or part thereof, shall be kept indoors in its original packaging at room temperature.

(b) Installation shall be carried out in accordance with Roxtec installation instructions in effect from time to time.

The product information provided by Roxtec does not release the purchaser of the Roxtec system, or part thereof, from the obligation to independently

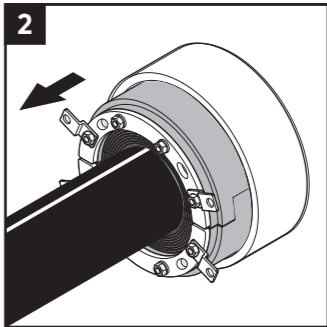
determine the suitability of the products for the intended process, installation and/or use.

Roxtec gives no guarantee for the Roxtec system or any part thereof and assumes no liability for any loss or damage whatsoever, whether direct, indirect, consequential, loss of profit or otherwise, occurred or caused by the Roxtec systems or installations containing components not manufactured by an authorized manufacturer and/or occurred or caused by the use of the Roxtec system in a manner or for an application other than for which the Roxtec system was designed or intended.

Roxtec expressly excludes any implied warranties of merchantability and fitness for a particular purpose and all other express or implied representations and warranties provided by statute or common law. User determines suitability of the Roxtec system for intended use and assumes all risk and liability in connection therewith. In no event shall Roxtec be liable for indirect, consequential, punitive, special, exemplary or incidental damages or losses.

The Roxtec products are offered and sold in accordance with the conditions of the Roxtec General Terms of Sales. The latest version of the Roxtec General Terms of Sales can be found and downloaded from [roxtec.com/general-terms-of-sales](http://roxtec.com/general-terms-of-sales).

### Disassembly



Repeat the steps in reverse order in disassembly.



Roxtec International AB  
Box 540, 371 23 Karlskrona, SWEDEN  
+46 455 36 67 00, [info@roxtec.com](mailto:info@roxtec.com)  
[www.roxtec.com](http://www.roxtec.com)