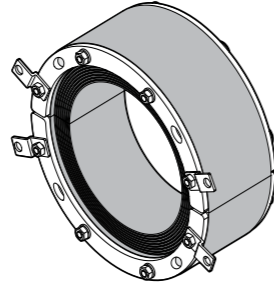


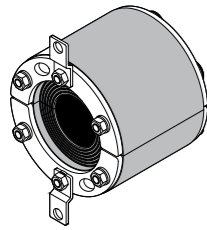
# Installation instructions Roxtec RS UG™ seal



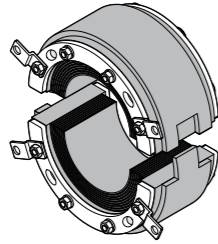
### Safety information

Roxtec recommends that all installations are performed without facility operation. Follow national regulations and installation codes. Any action affecting the routed service should be performed according to manufacturer recommendations.

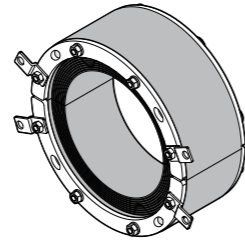
## Components



Roxtec RS 70 UG



Roxtec RS 160 UG



Roxtec RS 200 UG



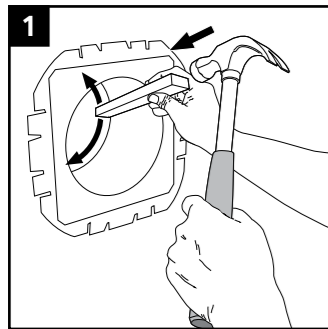
Roxtec Lubricant

## Technical data

The amount of torque needed to compress the seal depends on several things, e.g cable or pipe size, amount of used lubricant, aperture size or material in the cable sheath, etc.

Name	Aperture dimension Ø (mm)	For cable/pipe Ø (mm)	Tool size (mm)
RS 70 UG	70 – 75	9 – 33	10
RS 75 UG	75 – 80	9 – 33	10
RS 80 UG	80 – 85	9 – 33	10
RS 90 UG	90 – 95	24 – 53	10
RS 95 UG	95 – 100	24 – 53	10
RS 100 UG	100 – 105	39 – 63	10
RS 100 24–53 UG	100 – 105	24 – 53	10
RS 105 UG	105 – 110	39 – 63	10
RS 110 UG	110 – 115	39 – 63	10
RS 125 UG	125 – 130	55 – 88	10
RS 130 UG	130 – 135	55 – 88	10
RS 135 55–88 UG	135 – 140	55 – 88	10
RS 135 UG	135 – 140	65 – 98	10
RS 140 UG	140 – 145	65 – 98	10
RS 145 UG	145 – 150	65 – 98	10
RS 150 UG	150 – 155	80 – 113	10
RS 155 UG	155 – 160	80 – 113	10
RS 160 UG	160 – 165	80 – 113	10
RS 185 UG	185 – 190	114 – 148	10
RS 190 UG	190 – 195	114 – 148	10
RS 195 UG	195 – 200	114 – 148	10
RS 200 UG	200 – 205	130 – 163	10
RS 205 UG	205 – 210	130 – 163	10
RS 210 UG	210 – 215	130 – 163	10
RS 225 UG	225 – 230	146 – 179	13
RS 230 UG	230 – 235	146 – 179	13
RS 235 UG	235 – 240	146 – 179	13
RS 250 UG	250 – 255	171 – 204	13
RS 255 UG	255 – 260	171 – 204	13
RS 260 UG	260 – 265	171 – 204	13

## Installation in a Roxtec knock-out sleeve



1 Remove the knock-out plate of the sleeve before inserting the seal.

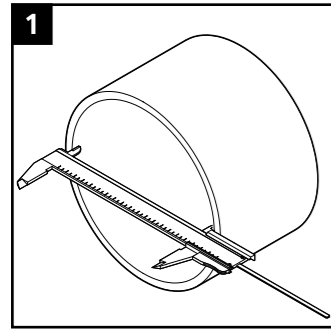
## Tools

- Spanner (not included)
- Caliper (not included)
- Hammer (not included)
- Brush (not included)

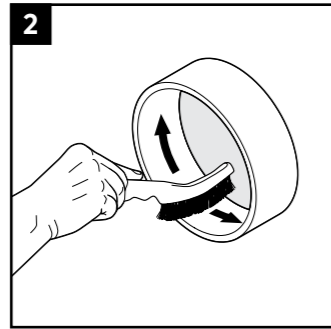
## To be installed in

- Welded sleeves
- Bolted sleeves
- Cast-in sleeves
- Core drilled holes

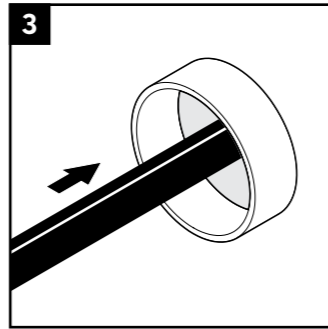
## Installation



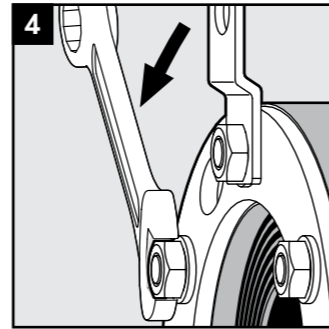
1 Make or verify an aperture.



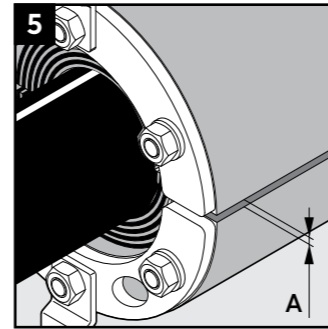
2 Clean the aperture.



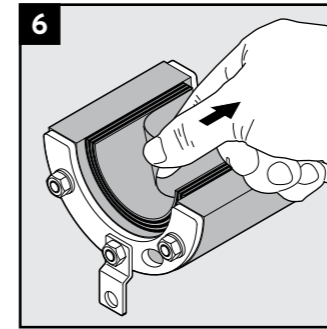
3 Pull the cable/pipe straight and centered through the aperture.



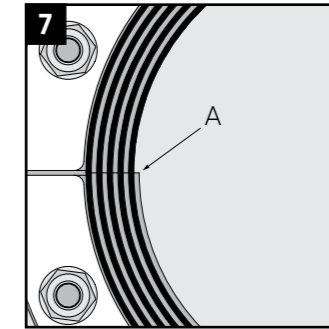
4 Loosen all the nuts.



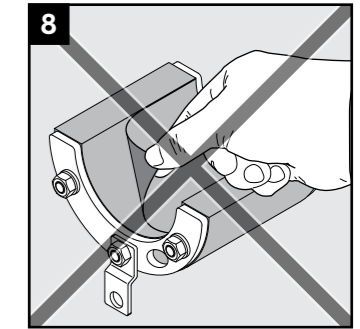
5 Achieve a 0-1.0 mm (A) gap between the two halves when held against the cable/pipe.



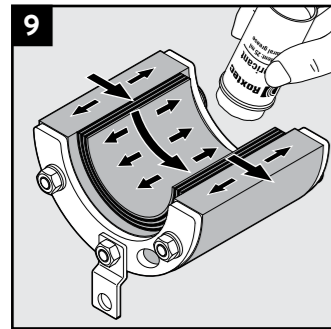
6 Adapt the RS UG seal by peeling off layers.



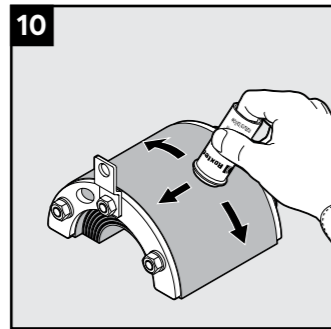
7 The number of layers may not differ (A) by more than one between the corresponding seal halves.



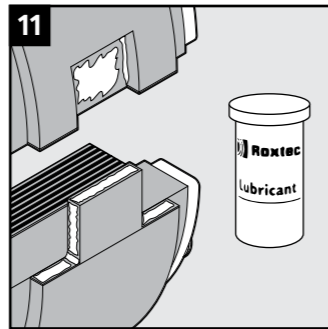
8 Do not remove the last layer.



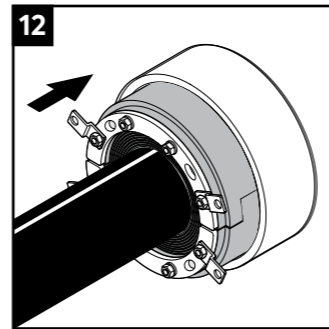
9 Lubricate the inside sealing surfaces with Roxtec Lubricant.



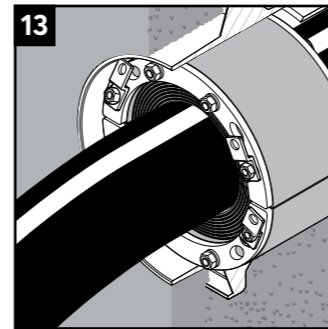
10 Lubricate the outer sealing surfaces sparsely with Roxtec Lubricant, if needed.



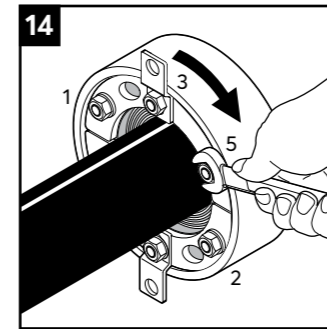
11 Lubricate sharp corners thoroughly.



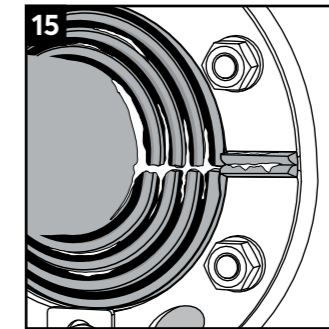
12 Insert the halves into the sleeve.



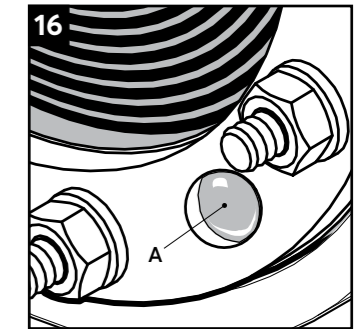
13 Fold or remove the tabs to insert the seal further.



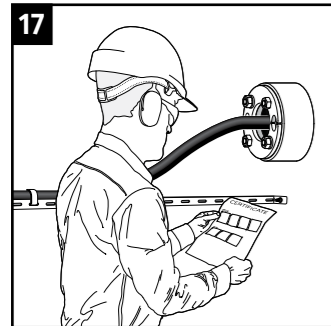
14 Firmly tighten the nuts crosswise in small steps.



15 Bulging rubber and visible protruding lubricant indicate a tight seal.



16 The inner rubber part shall create a visible bulge (A) in each hole.



17 Check additional documentation, if applicable.

## Note

- An RS UG seal with center core can be used as spare capacity.
- Wait 24 hours after installation before exposing the cables/pipes to strain or pressure.
- Cables/pipes shall be parallel to the sleeve/aperture.
- Cable/pipe with a considerable weight needs to be supported to prevent damage or subsidence to the seal.
- Do not peel off the last rubber layer of each sealing half.
- Approvals or certificates may include amendments or limitations related to this application.
- The latest version of this and related documents are found at roxtec.com.

## Disclaimer

The Roxtec cable entry sealing system ("the Roxtec system") is a modular-based system of sealing products consisting of different components. Each and every one of the components is necessary for the best performance of the Roxtec system. The Roxtec system has been certified to resist a number of different hazards. Any such certification, and the ability of the Roxtec system to resist such hazards, is dependent on all components that are installed as a part of the Roxtec system. Thus, the certification is not valid and does not apply unless all components installed as part of the Roxtec system are manufactured by or under license from Roxtec ("authorized manufacturer"). Roxtec gives no performance guarantee with respect to the Roxtec system, unless (i) all components installed as part of the Roxtec system are manufactured by an authorized manufacturer and (ii) the purchaser is in compliance with (a), and (b), below.

(a) During storage, the Roxtec system or part thereof, shall be kept indoors in its original packaging at room temperature.

(b) Installation shall be carried out in accordance with Roxtec installation instructions in effect from time to time.

The product information provided by Roxtec does not release the purchaser of the Roxtec system, or part thereof, from the obligation to independently determine the suitability of the products for the intended process, installation and/or use.

Roxtec gives no guarantee for the Roxtec system or any part thereof and assumes no liability for any loss or damage whatsoever, whether direct, indirect, consequential, loss of profit or otherwise, occurred or caused by the Roxtec systems or installations containing components not manufactured by an authorized manufacturer and/or occurred or caused by the use of the Roxtec system in a manner or for an application other than for which the Roxtec system was designed or intended.

Roxtec expressly excludes any implied warranties of merchantability and fitness for a particular purpose and all other express or implied representations and warranties provided by statute or common law. User determines suitability of the Roxtec system for intended use and assumes all risk and liability in connection therewith. In no event shall Roxtec be liable for indirect, consequential, punitive, special, exemplary or incidental damages or losses.\*



Roxtec International AB  
Box 540, 371 23 Karlskrona, SWEDEN  
+46 455 36 67 00, info@roxtec.com  
www.roxtec.com