

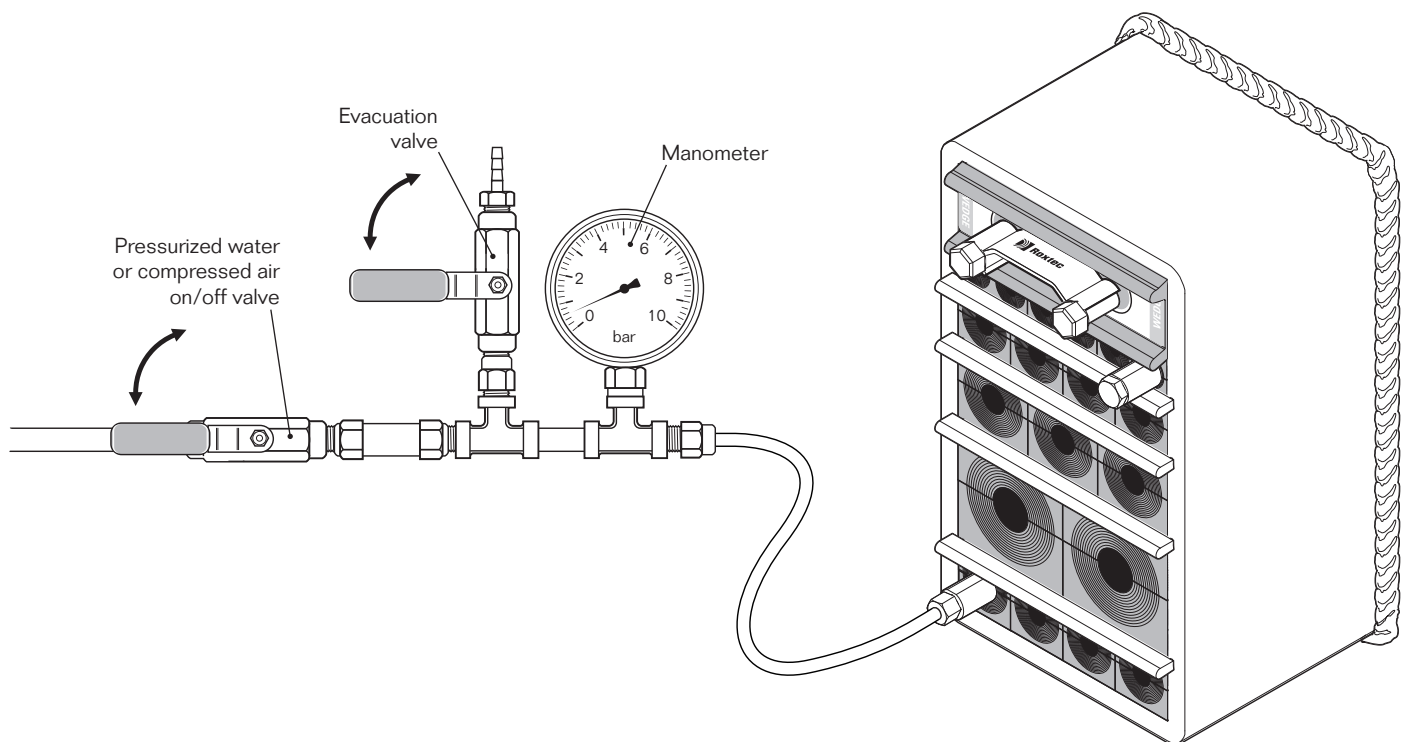
For installation of sealing system components in the frame, the latest version of the standard installation instructions (Article number: 124037, Document number 124035) are to be followed.

Test must only be carried out in a safe and controlled way and shall unconditionally follow procedures and protection arrangements dictated and confirmed by yard, company and/or administration responsible and in charge of the test verification.

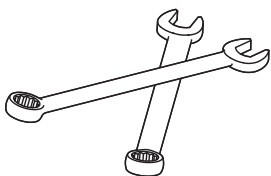
Caution: Misuse of compressed air may be dangerous.



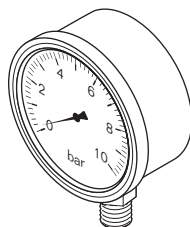
Instructions for verification of Roxtec Back to back (BTB) frame installation



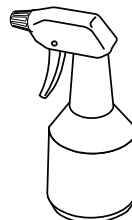
Required tools



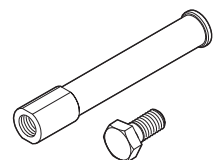
Spanners



Manometer

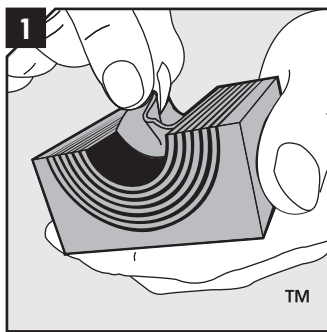


Spray bottle with soapy water

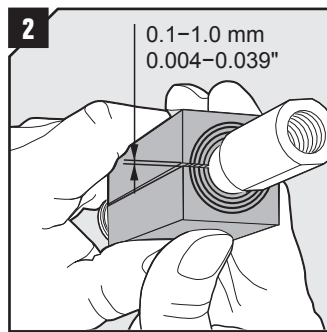


Test pipe

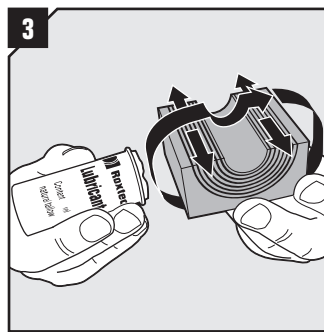
Installation



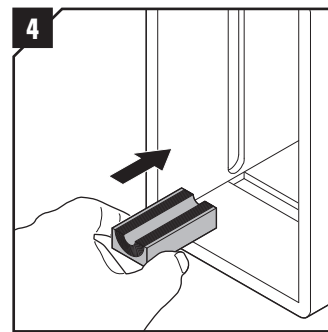
Adapt the module, which is to hold the test pipe, by peeling off layers until you reach the gap seen in step 2. The number of layers may not differ by more than one between the halves.



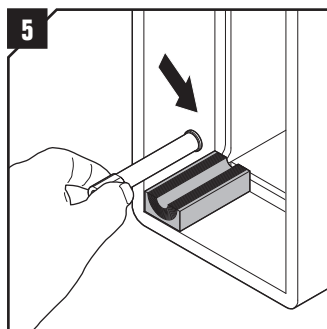
Achieve a 0.1–1.0 mm gap between the two halves when held against the test pipe.



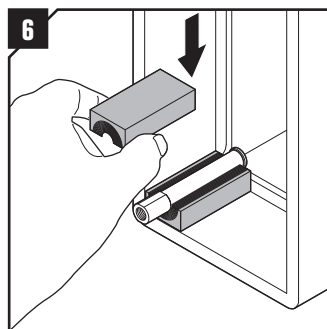
Lubricate the module thoroughly, both the inside and the outside sealing surfaces.



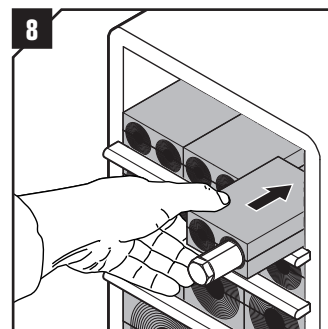
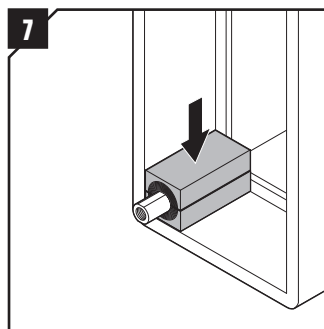
Insert the first module half, which is to hold the test pipe, at the bottom of the frame.



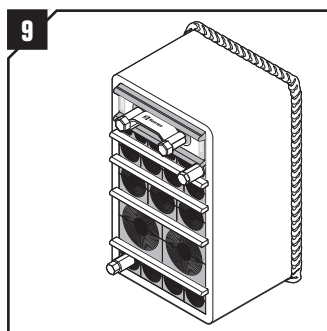
Insert the test pipe into the module half.



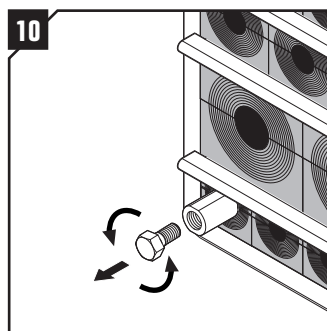
Place the adapted corresponding module half on top of the test pipe.



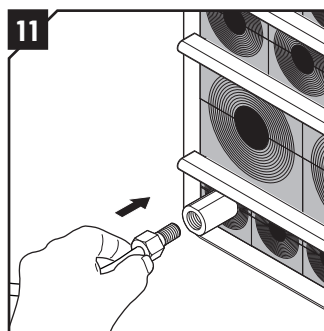
Continue to fill up the transit. When testing with water, insert an additional test pipe in the top module row.



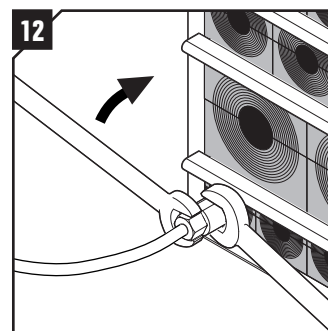
Insert and tighten the wedge. Complete the installation by attaching the wedge clip.



Unscrew the bolt cap.

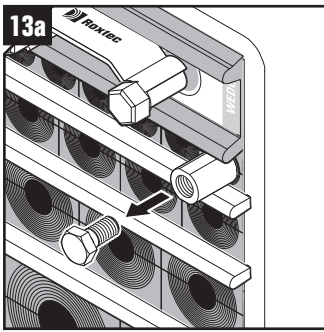


Attach the water/air hose. Use suitable thread sealant.

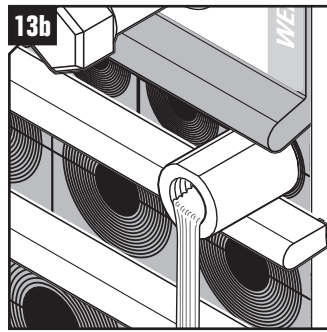


Tighten the water/air hose using two spanners to prevent the test pipe from rotating inside the module. Make sure that all connectors are properly tightened and free from leakage.

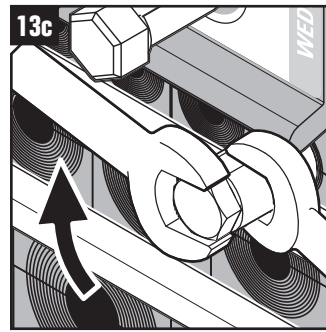
For water test only



Remove the upper bolt cap to allow the air to escape.

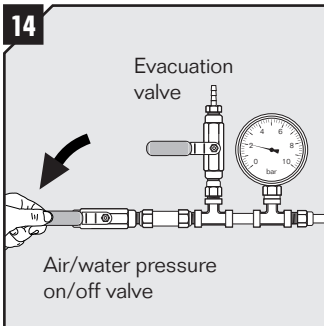


Start filling the BTB frame gently with water until it is pouring out of the upper test pipe.

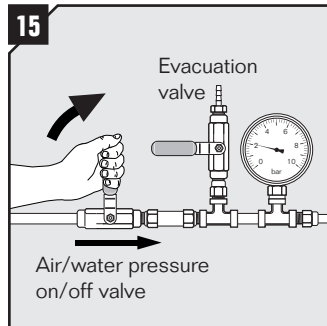


Attach the upper bolt cap using suitable thread sealant.

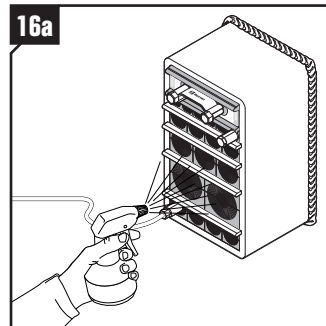
For water and air pressure test continued



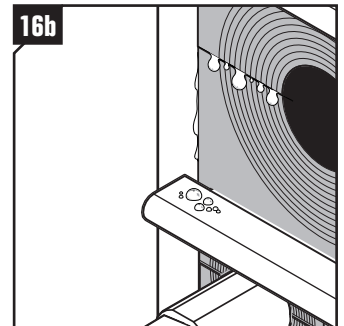
Make sure the evacuation valve is closed before starting the test. Open the valve to start the test. Verify the test pressure by reading the manometer.



Close the valve when the test pressure is reached.

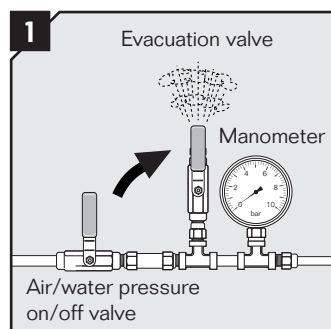


For air pressure test:
Spray the transit on both sides with soapy water and check for air leaks.

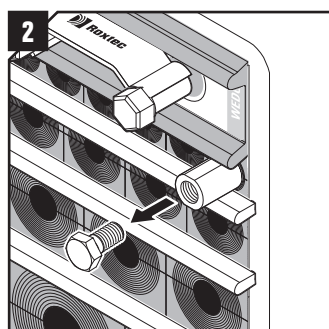


For water pressure test:
Make sure there are no water drops or other signs of leakage.

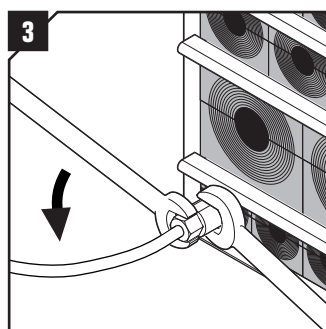
Disassembly



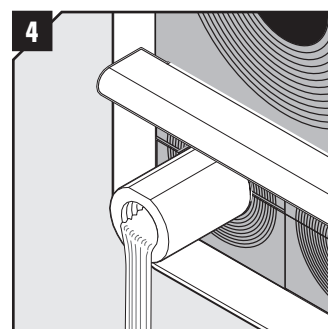
Make sure that the air/water valve is closed. Open the evacuation valve carefully. Confirm that the system is not pressurized by reading the manometer.



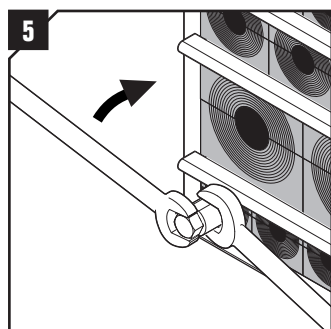
For water pressure test:
Remove the upper bolt cap.



For water and air pressure test:
Remove the air/water hose by using two spanners preventing the test pipe from rotating inside the module.



For water pressure test:
The water will now drain. Attach compressed air to the upper test pipe and carefully blow out the remaining water from the transit.



For water and air pressure test:
Re-attach the bolt caps using suitable thread sealant. Use two spanners to prevent the test pipes from rotating inside the modules.

Note

- Installation/testing of transits should only be performed by Roxtec trained installers.
- Roxtec recommended test pressure for the typical setup is 0.2 bar.
- Test pipe(s) should only be installed from one side of the Back to back transit.

DISCLAIMER

"The Roxtec cable entry sealing system ("the Roxtec system") is a modular based system of sealing products consisting of different components. Each and every one of the components is necessary for the best performance of the Roxtec system. The Roxtec system has been certified to resist a number of different hazards. Any such certification, and the ability of the Roxtec system to resist such hazards, is dependent on all components that are installed as a part of the Roxtec system. Thus, the certification is not valid and does not apply unless all components installed as part of the Roxtec system are manufactured by or under license from Roxtec ("authorized manufacturer"). Roxtec gives no performance guarantee with respect to the Roxtec system, unless (i) all components installed as part of the Roxtec system are manufactured by an authorized manufacturer and (ii) the purchaser is in compliance with (a), and (b), below.

(a) During storage, the Roxtec system or part thereof, shall be kept indoors in its original packaging at room temperature.

(b) Installation shall be carried out in accordance with Roxtec installation instructions in effect from time to time.

The product information provided by Roxtec does not release the purchaser of the

Roxtec system, or part thereof, from the obligation to independently determine the suitability of the products for the intended process, installation and/or use. Roxtec gives no guarantee for the Roxtec system or any part thereof and assumes no liability for any loss or damage whatsoever, whether direct, indirect, consequential, loss of profit or otherwise, occurred or caused by the Roxtec systems or installations containing components not manufactured by an authorized manufacturer and/or occurred or caused by the use of the Roxtec system in a manner or for an application other than for which the Roxtec system was designed or intended.

Roxtec expressly excludes any implied warranties of merchantability and fitness for a particular purpose and all other express or implied representations and warranties provided by statute or common law. User determines suitability of the Roxtec system for intended use and assumes all risk and liability in connection therewith. In no event shall Roxtec be liable for indirect, consequential, punitive, special, exemplary or incidental damages or losses."



Roxtec International AB
Box 540, 371 23 Karlskrona, SWEDEN
PHONE +46 455 36 67 00, FAX +46 455 820 12
EMAIL info@roxtec.com, www.roxtec.com