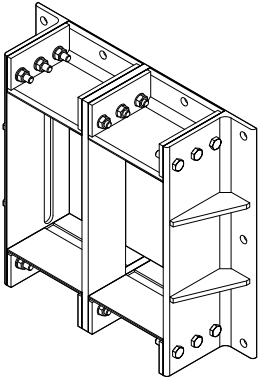
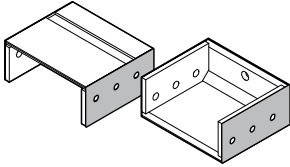


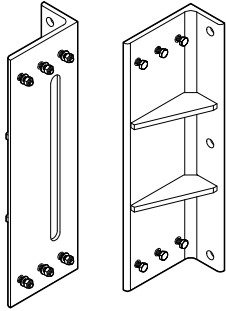
Installation instructions  
Roxtec GKO frame



Components



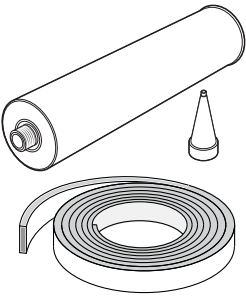
Short side including gasket



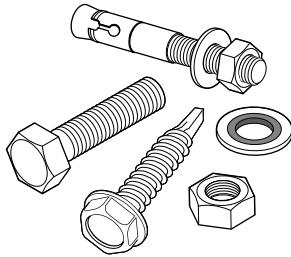
Long side including fasteners



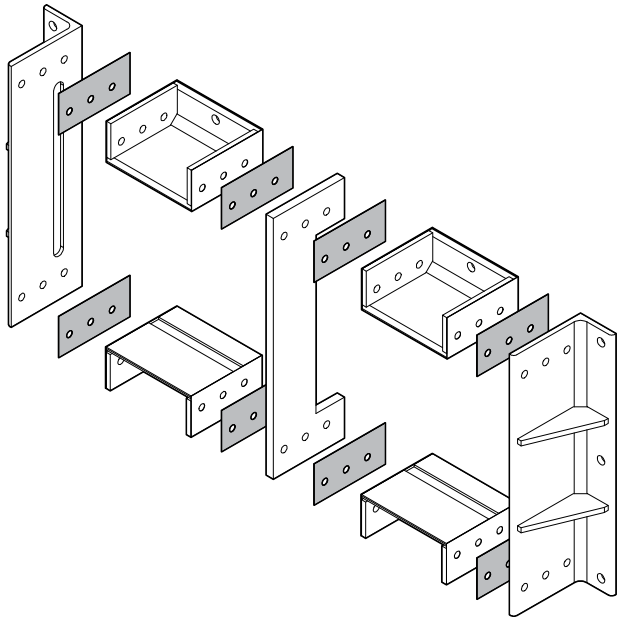
Midwall including fasteners



Structure gasket and sealant (not included)



Structure fasteners (not included)

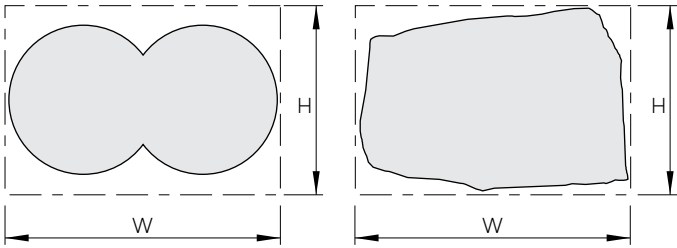


Example of Roxtec GKO frame size 6x2

Aperture

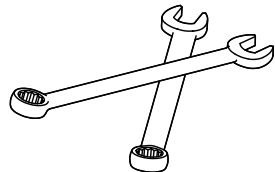
H= height.  
W= width.  
Z= frame size.

Z	H ±5	W ±5									
2	101	x1	x2	x3	x4	x5	x6	x7	x8	x9	x10
4	160										
6	218										
8	278										
		120	251	382	512	643	773	904	1034	1165	1295

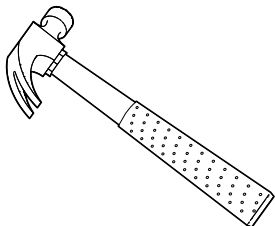


Examples of apertures.

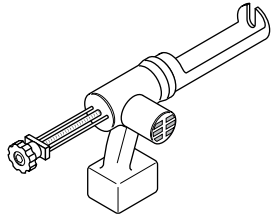
Tools



Spanners (not included)

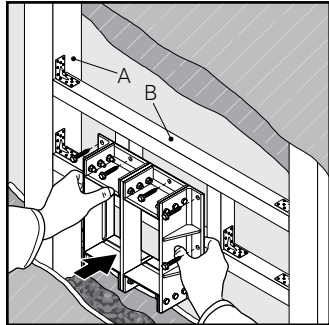


Hammer (not included)



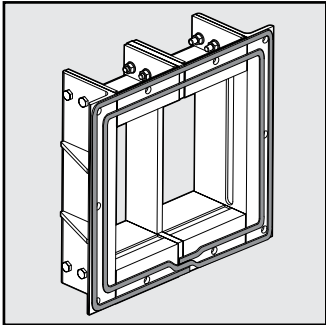
Caulking gun (not included)

Installation in a  
gypsum structure



Add additional aperture framing structure (B) to the existing structure (A) inside the wall.

Sealing frame with  
sealing strip



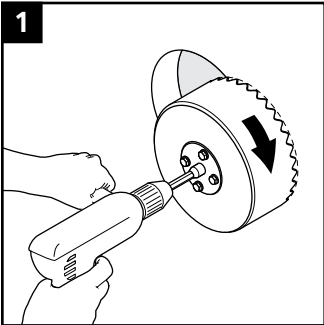
Follow the mounting instructions supplied with the selected gasket.

Roxtec guideline  
documents

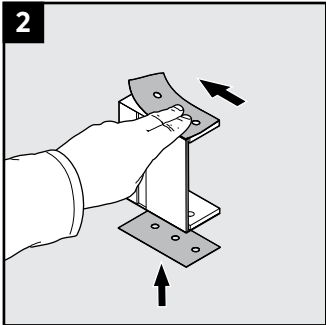


For further information, Roxtec guideline documents are available at [roxtec.com](http://roxtec.com).

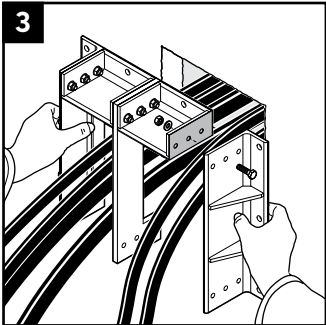
Installation



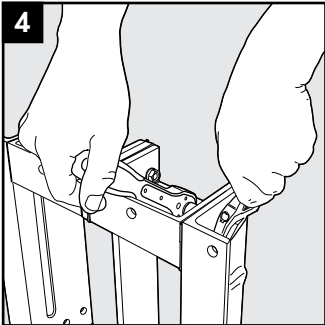
Make or verify an aperture.



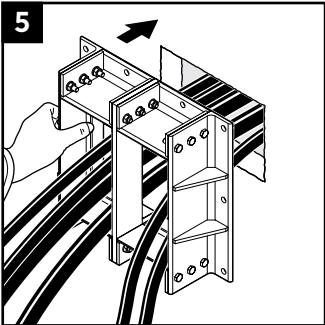
Make sure gaskets are attached on the short side components.



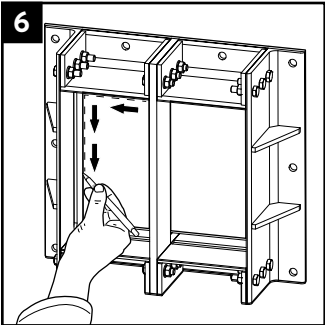
Assemble the frame around the cables.



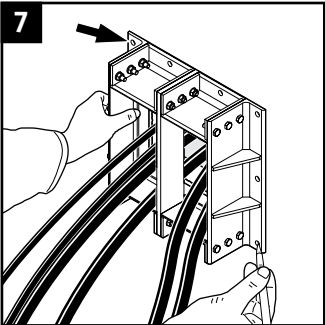
Tighten the fasteners firmly.



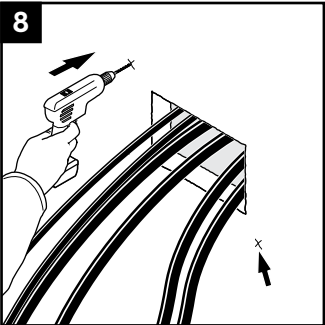
Place the frame against the structure.



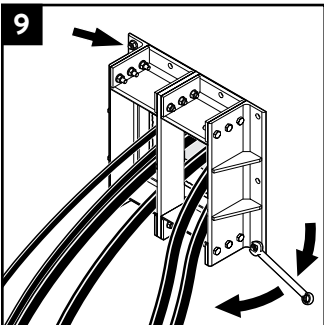
If the aperture is not made, the inner edge can be used as template.



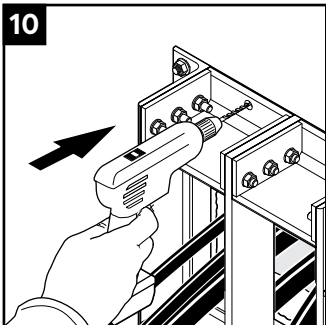
Center the frame considering the aperture and use it as template for the flange hole pattern. Make two marks diagonally and remove the frame.



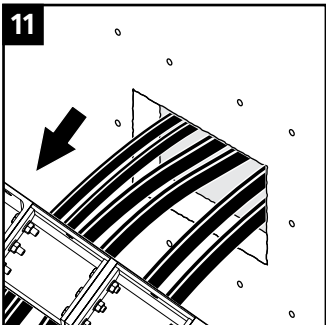
Drill holes for two of the fasteners.



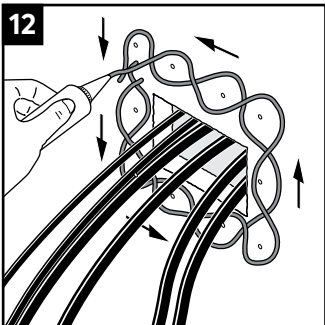
Fasten the frame with two fasteners.



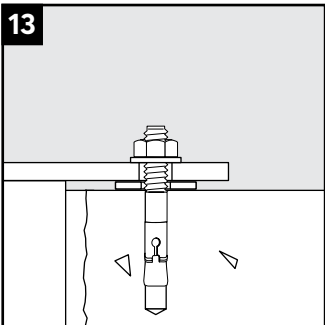
With the frame in place, drill the holes for the remaining fasteners.



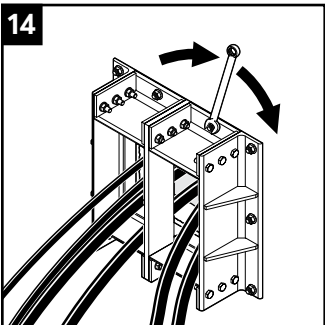
Remove the frame from the structure.



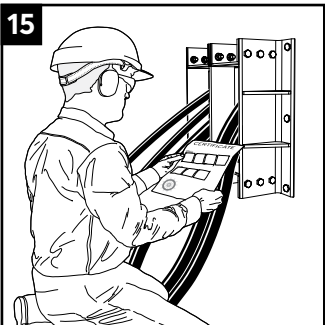
Apply sealant to the structure with a thickness not less than 6 mm.



Attach washers or similar behind the flange to ensure a 2 mm gap between the frame flange and the structure.



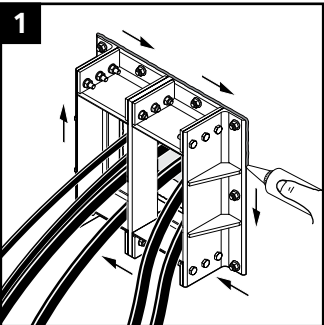
Place the frame and fasten it. Tighten the fasteners crosswise in small steps to the specified torque according to the fastener specification.



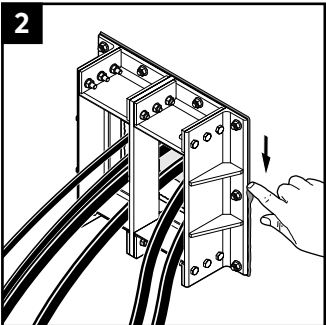
Make a final check! Different approvals or certificates may include amendments or limitations related to this application.

Optional

For increased resistance against crevice corrosion and frost wedging.

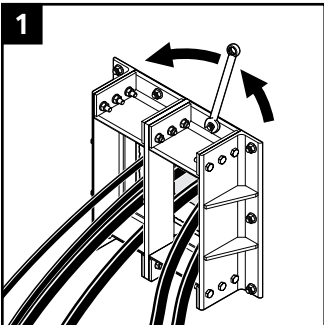


Apply a final string of sealant around the perimeter of the flange.

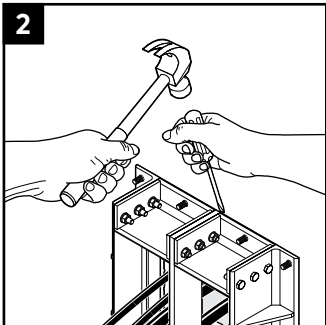


Smooth out the sealant so that it closes any gap completely all around. Consider the curing time of the sealant.

Disassembly

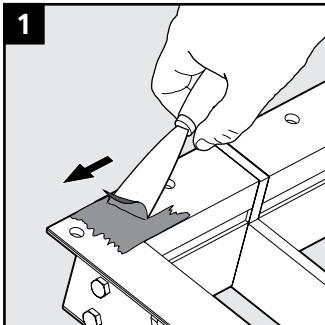


Remove all fasteners holding the frame to the structure.



Use a suitable tool to remove the frame from the structure.

Reinstallation



Prior to reinstallation, all sealant and gaskets must be removed and replaced.

Note

- Additional sealing components are required for a complete solution. Follow the corresponding installation instructions.
- When mounting expansion bolts in concrete, the edge distance should be at least 60 mm.
- The structure and chosen sealing method have significant effect on the rating and type approval. Consult your local Roxtec representative.
- The TSL 15x6 sealing strip does not need a compression stop.
- Approvals or certificates may include amendments or limitations related to this application.
- The latest version of this and related documents are found at [roxtec.com](http://roxtec.com).

Disclaimer

\*The Roxtec cable entry sealing system ("the Roxtec system") is a modular-based system of sealing products consisting of different components. Each and every one of the components is necessary for the best performance of the Roxtec system. The Roxtec system has been certified to resist a number of different hazards. Any such certification, and the ability of the Roxtec system to resist such hazards, is dependent on all components that are installed as a part of the Roxtec system. Thus, the certification is not valid and does not apply unless all components installed as part of the Roxtec system are manufactured by or under license from Roxtec ("authorized manufacturer"). Roxtec gives no performance guarantee with respect to the Roxtec system, unless (i) all components installed as part of the Roxtec system are manufactured by an authorized manufacturer and (ii) the purchaser is in compliance with (a), and (b), below.  
(a) During storage, the Roxtec system or part thereof, shall be kept indoors in its original packaging at room temperature.  
(b) Installation shall be carried out in accordance with Roxtec installation instructions in effect from time to time.

The product information provided by Roxtec does not release the purchaser of the Roxtec system, or part thereof, from the obligation to independently determine the suitability of the products for the intended process, installation and/or use.  
Roxtec gives no guarantee for the Roxtec system or any part thereof and assumes no liability for any loss or damage whatsoever, whether direct, indirect, consequential, loss of profit or otherwise, occurred or caused by the Roxtec systems or installations containing components not manufactured by an authorized manufacturer and/or occurred or caused by the use of the Roxtec system in a manner or for an application other than for which the Roxtec system was designed or intended.  
Roxtec expressly excludes any implied warranties of merchantability and fitness for a particular purpose and all other express or implied representations and warranties provided by statute or common law. User determines suitability of the Roxtec system for intended use and assumes all risk and liability in connection therewith. In no event shall Roxtec be liable for indirect, consequential, punitive, special, exemplary or incidental damages or losses.



Roxtec International AB  
Box 540, 371 23 Karlskrona, SWEDEN  
+46 455 36 67 00, [info@roxtec.com](mailto:info@roxtec.com)  
[www.roxtec.com](http://www.roxtec.com)