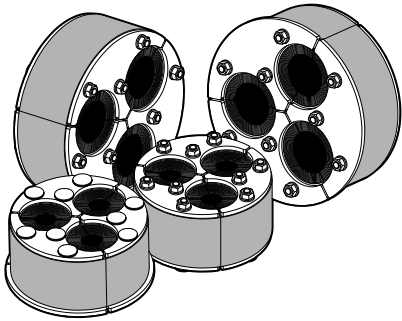
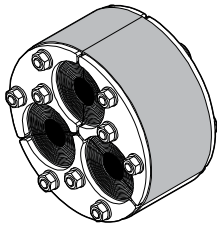


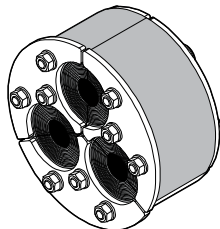
Installation instructions
Roxtec H3 seal



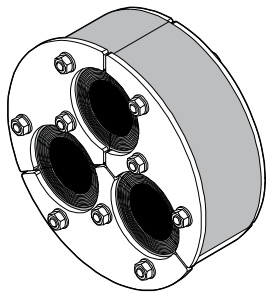
Components



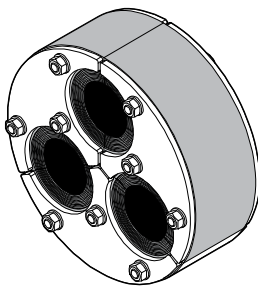
H3-150



H3-150 INSERTABLE



H3-200



H3-200 INSERTABLE

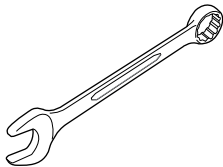


Roxtec Lubricant

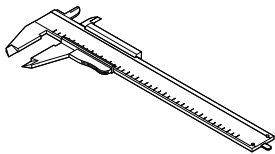
Technical data

Name	Aperture dimension Ø (mm)	For cable/pipe Ø (mm)	Torque (Nm)	Tool size (mm)
H3-150	150 – 152	24 – 54	10 – 12	13
H3-200	200 – 202	48 – 70	10 – 12	13

Tools

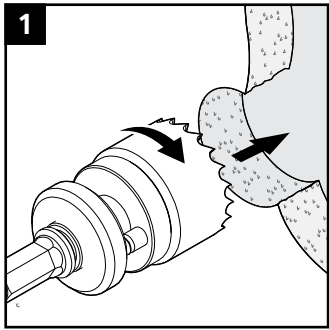


Spanner (not included)



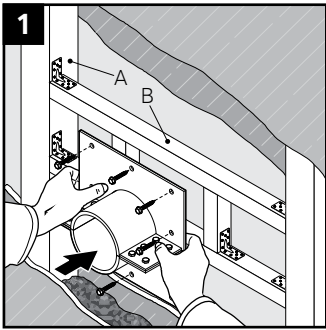
Caliper (not included)

Installation in a core-drilled hole



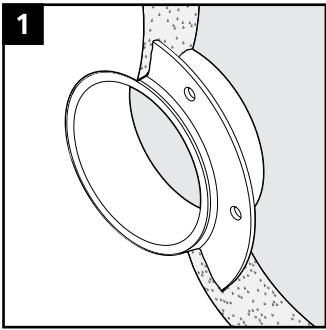
Use a hole saw with the appropriate diameter.

Installation in a gypsum structure



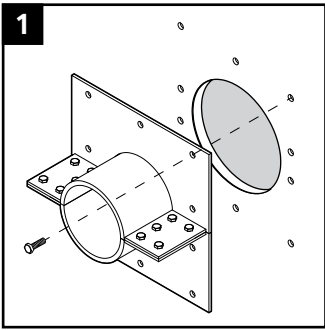
Add additional aperture framing structure of steel or timber (B) to the existing structure (A) inside the wall.

Casting a sleeve into a concrete wall



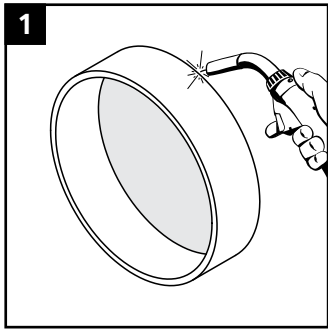
Cast the sleeve into a concrete wall.

Installation bolted sleeves



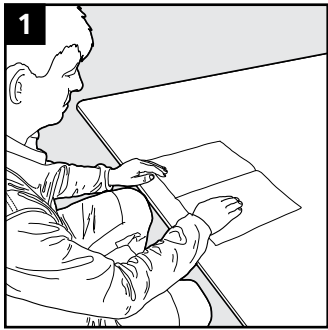
Attach the sleeve to the structure using suitable sealing method and suitable fasteners.

Installation welded sleeves



Weld the Roxtec sleeve to the cabinet/wall.

Roxtec guideline documents

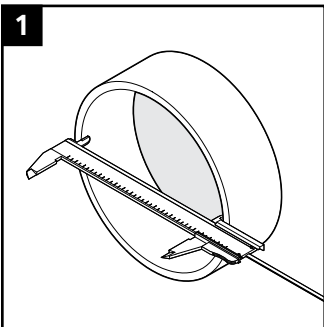


For further information, Roxtec guideline documents are available at roxtec.com.

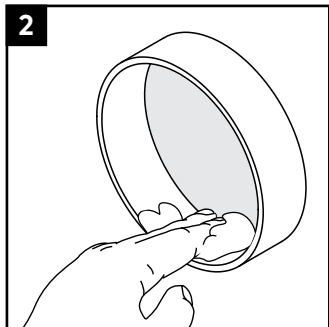
Note

- For optimum reliability, wait 24 hours or longer after installation before exposing the cables/pipes to strain or pressure.
- Cables/pipes shall be parallel to the sleeve/aperture.
- Cable/pipe with a considerable weight needs to be supported to prevent damage or subsidence to the seal.
- Approvals or certificates may include amendments or limitations related to this application.
- A seal with core is spare capacity.
- The latest version of this and related documents are found at roxtec.com.

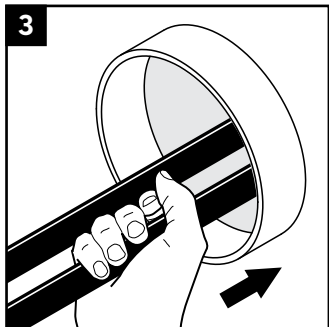
Installation



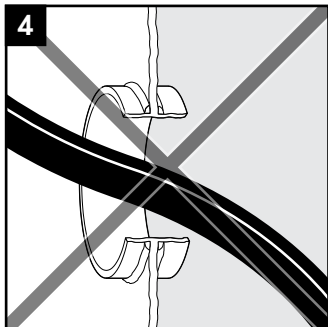
Make or verify an aperture.



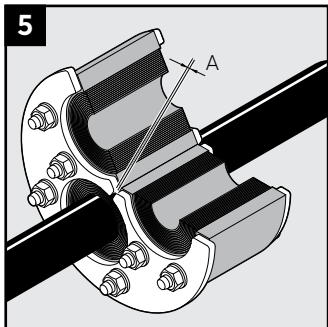
Clean the aperture.



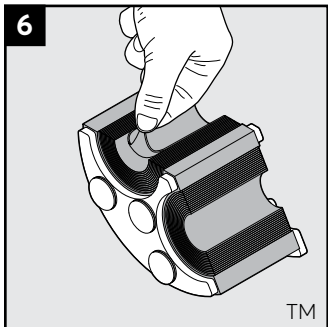
Pull the cables/pipes straight through the aperture.



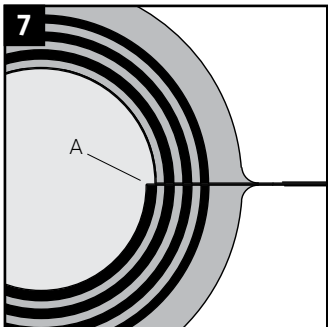
Not acceptable.



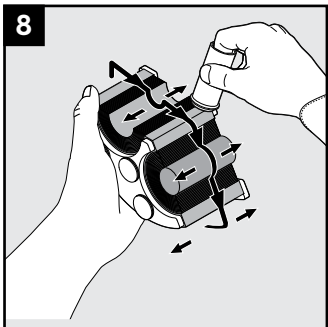
Achieve a gap of 0-1.0 mm (A) between the halves for all cables.



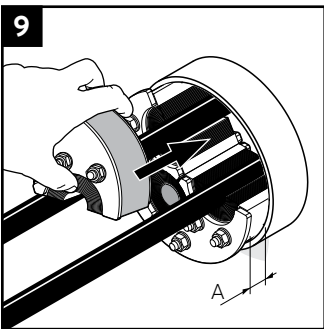
Adapt the seal by peeling of layers.



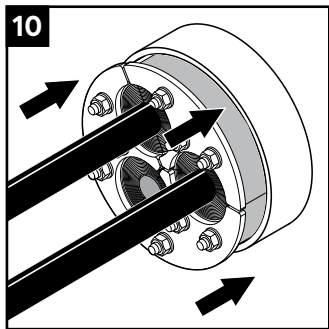
The number of layers may not differ (A) by more than one between the corresponding seal halves.



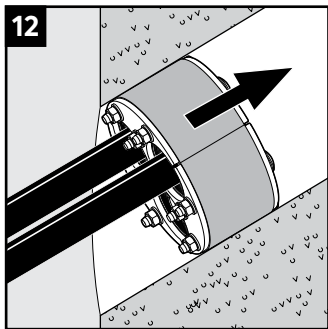
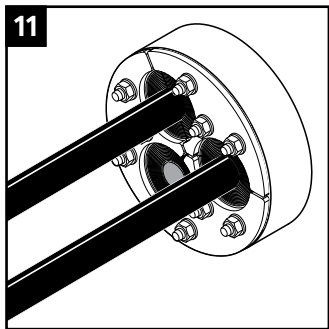
Lubricate the three parts of the seal thoroughly all around. Lubricate remaining cores on the sealing surface.



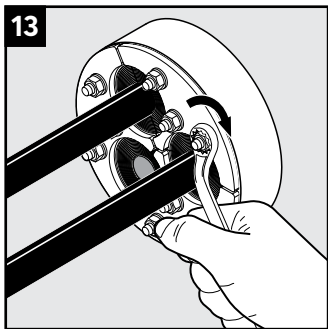
Insert the seal parts into the sleeve. Leave a 10 mm margin (A) to simplify installation.



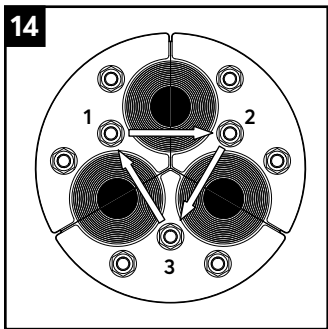
Press all three parts of the seal into the sleeve simultaneously.



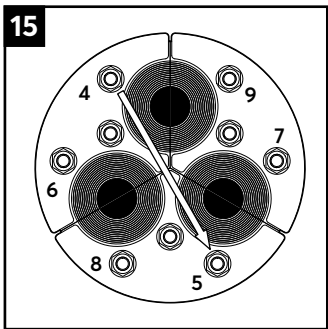
Use an insertable seal if the hole is not perpendicular to the wall.



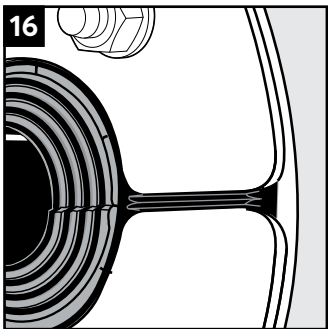
Tighten the nuts crosswise in small steps.



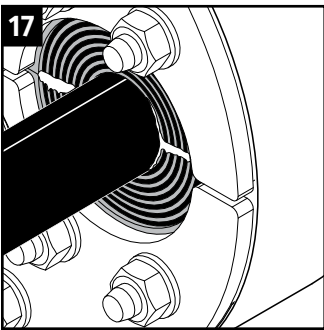
Tighten the inner nuts partially.



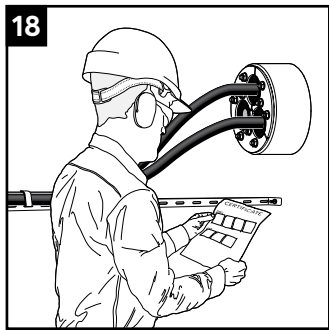
Tighten the outer nuts partially, and then continue with the inner nuts.



Rubber bulging is a sign of good compression.

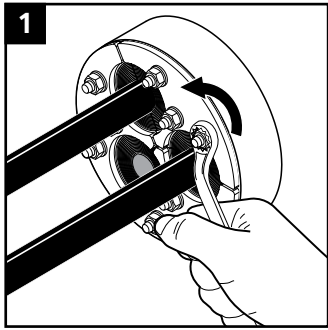


Excessive visible lubricant is a sign of good compression.

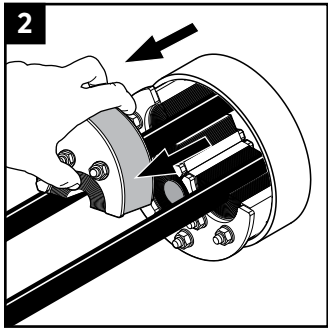


Make a final check! Different approvals or certificates may include amendments or limitations related to this application.

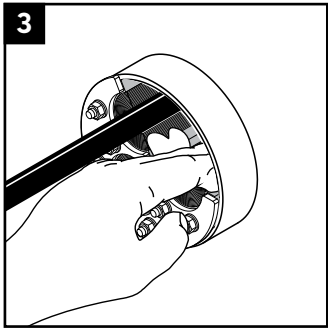
Disassembly and reinstallation



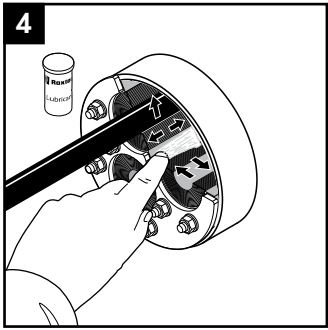
Untighten the nuts crosswise in small steps. Make sure the nuts are completely loose.



Remove the seal parts needed.



Clean the exposed sealing surfaces.



Lubricate the exposed sealing surfaces. Continue the reinstallation.

Disclaimer

*The Roxtec cable entry sealing system ("the Roxtec system") is a modular-based system of sealing products consisting of different components. Each and every one of the components is necessary for the best performance of the Roxtec system. The Roxtec system has been certified to resist a number of different hazards. Any such certification, and the ability of the Roxtec system to resist such hazards, is dependent on all components that are installed as a part of the Roxtec system. Thus, the certification is not valid and does not apply unless all components installed as part of the Roxtec system are manufactured by or under license from Roxtec ("authorized manufacturer"). Roxtec gives no performance guarantee with respect to the Roxtec system, unless (i) all components installed as part of the Roxtec system are manufactured by an authorized manufacturer and (ii) the purchaser is in compliance with (a), and (b), below.

(a) During storage, the Roxtec system or part thereof, shall be kept indoors in its original packaging at room temperature.

(b) Installation shall be carried out in accordance with Roxtec installation instructions in effect from time to time.

The product information provided by Roxtec does not release the purchaser of the Roxtec system, or part thereof, from the obligation to independently determine the suitability of the products for the intended process, installation and/or use.

Roxtec gives no guarantee for the Roxtec system or any part thereof and assumes no liability for any loss or damage whatsoever, whether direct, indirect, consequential, loss of profit or otherwise, occurred or caused by the Roxtec systems or installations containing components not manufactured by an authorized manufacturer and/or occurred or caused by the use of the Roxtec system in a manner or for an application other than for which the Roxtec system was designed or intended.

Roxtec expressly excludes any implied warranties of merchantability and fitness for a particular purpose and all other express or implied representations and warranties provided by statute or common law. User determines suitability of the Roxtec system for intended use and assumes all risk and liability in connection therewith. In no event shall Roxtec be liable for indirect, consequential, punitive, special, exemplary or incidental damages or losses.



Roxtec International AB
Box 540, 371 23 Karlskrona, SWEDEN
+46 455 36 67 00, info@roxtec.com
www.roxtec.com