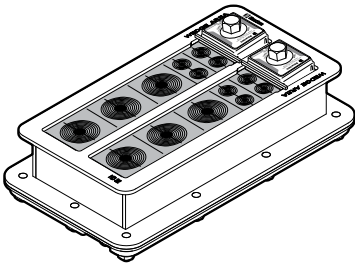


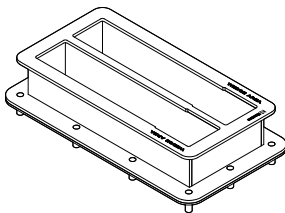
Installation instructions

Roxtec HD 32 with HD modules

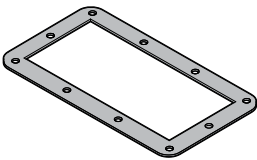


Safety information
Roxtec recommends that all installations are performed without facility operation. Follow national regulations and installation codes. Any action affecting the routed service should be performed according to manufacturer recommendations.

Components



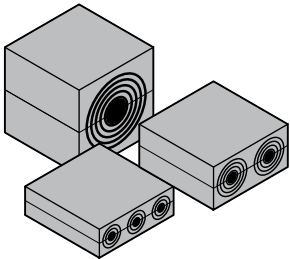
Roxtec HD frame



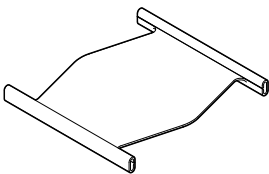
Gasket



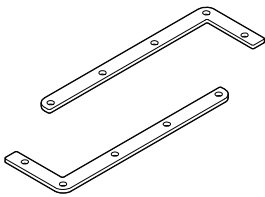
Fasteners



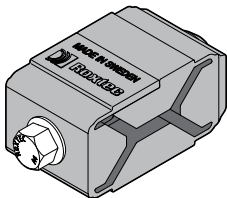
Roxtec HD modules



Roxtec HD stayplates



Counter frame



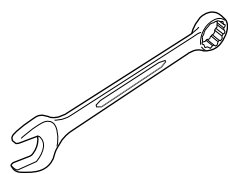
Compression unit

Roxtec HD modules

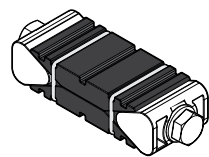
Measures in millimeters (mm).

Name	For cable/pipe Ø (mm)
HD 15w40	3 - 9.5
HD 20w40	3.5 - 15.5
HD 30w40	10 - 24
HD 40 10-32	9.5 - 31.5
HD 40	21.5 - 33.5

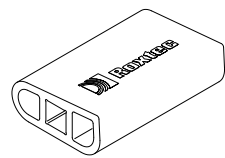
Tools



13 mm spanner (not included)



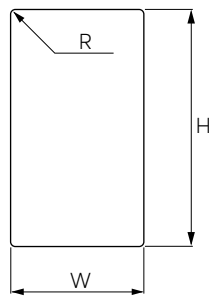
Roxtec pre-compression wedge
(not included)



Roxtec pre-compression eccentric
tool (not included)

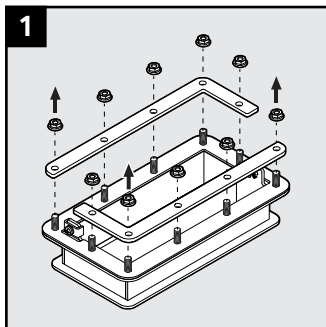
Aperture dimensions

Maximum thickness of structure 4 mm. Measures in millimeters (mm).

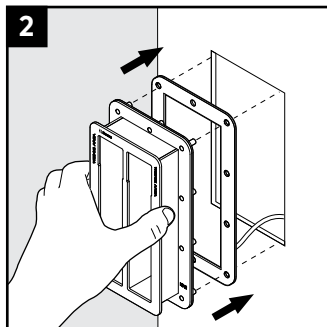


Name	Aperture dimensions WxH (mm)	R max
HD 32 FRAME ASSEMBLY AISI316	110(+1/-0.5) x 216(+1/-0.5)	3

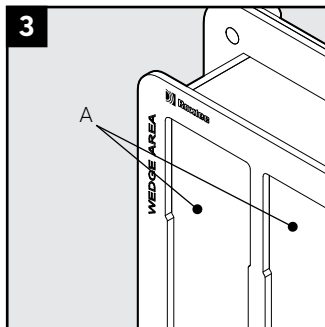
Installation



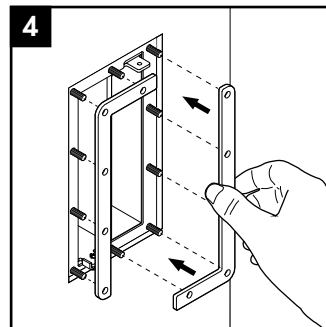
1 Remove all nuts and the two counter frames.



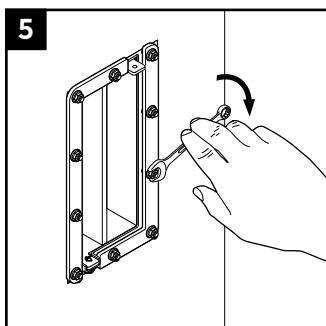
2 Insert the frame from the outside of the cabinet. Ensure that the gasket is placed between the frame and the cabinet.



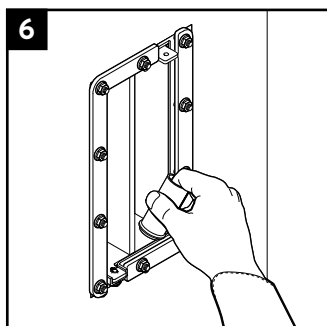
3 Observe the intended wedge areas (A) without stopping edges.



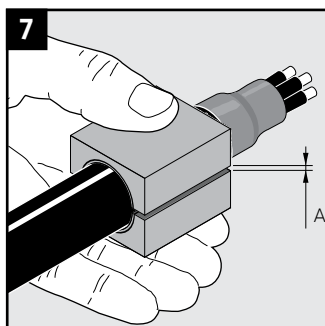
4 Attach the two counter frame parts from the inside of the cabinet.



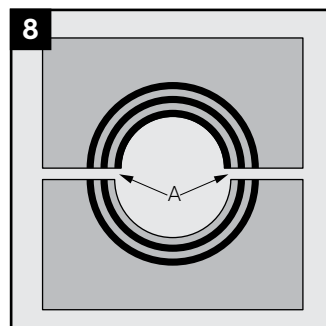
5 Tighten the nuts crosswise in small steps. Recommended torque 4 Nm. Do not overtighten the nuts.



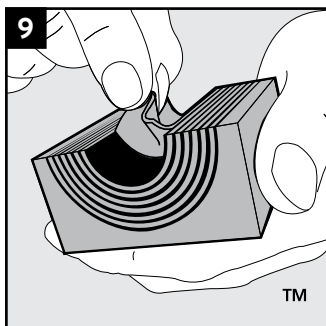
6 Lubricate the inside surfaces of the frame all around with Roxtec Lubricant, especially into the corners.



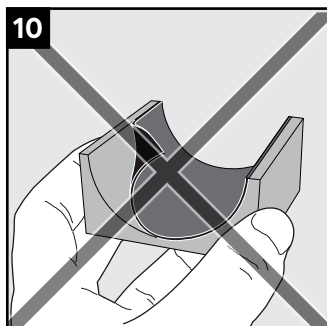
7 Achieve a gap of 0.1-1.0 mm (A) between the corresponding module halves.



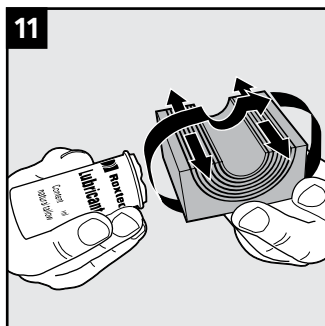
8 The number of layers may not differ (A) by more than one between the corresponding module halves.



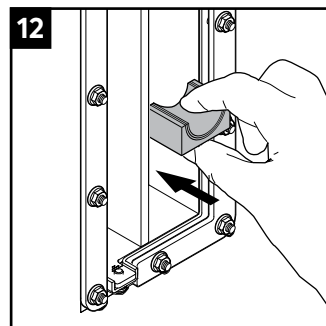
9 Adapt the modules by peeling off layers.



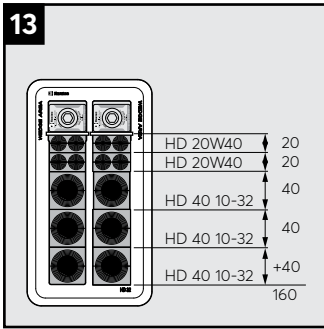
10 Do not remove the last layer.



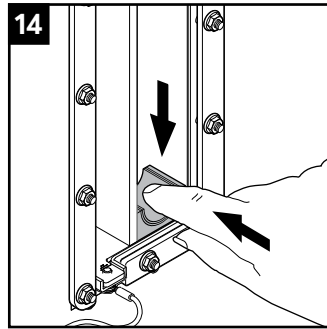
11 Lubricate all sealing surfaces of the module.



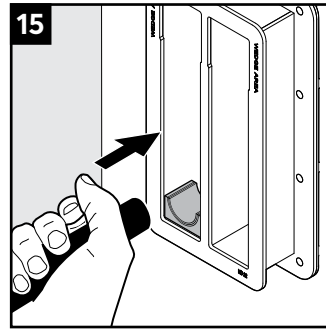
12 Insert the modules from the back side of the transit according to your packing plan. Start with the largest modules.



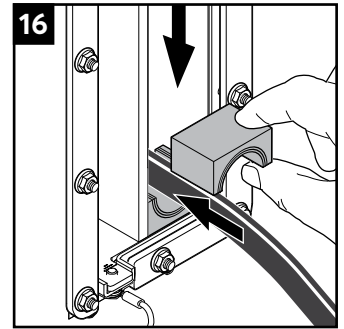
Consider the packing height of the frame. This is an example of a packing plan.



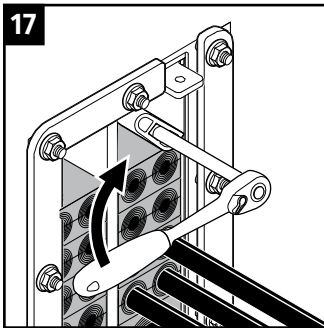
Push the modules in place. Ensure that the module rests against the stopping edge at the front.



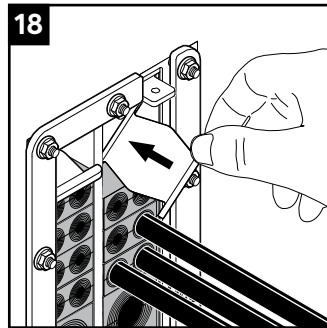
Insert the cables through the frame.



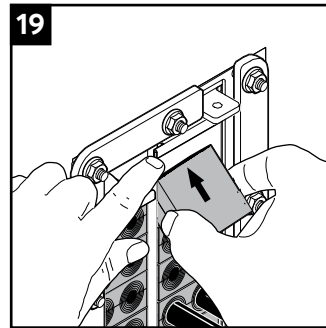
Insert the corresponding module half on top.



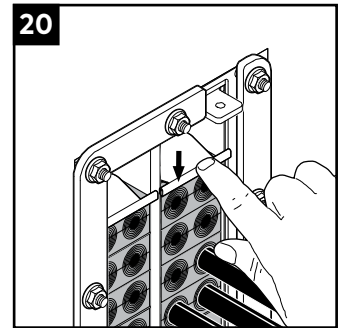
Use a Roxtec pre-compression tool to make space for the compression units if required.



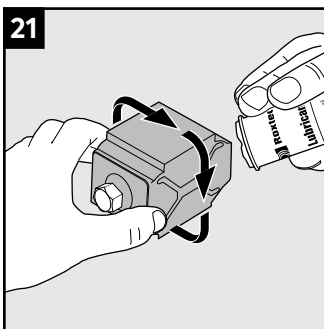
Before inserting the final module, insert a stayplate.



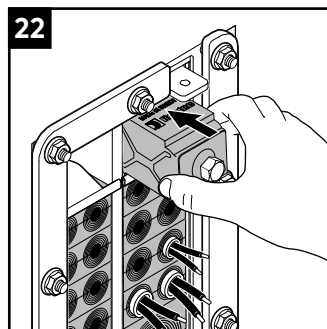
Lift up the stayplate and insert the last module underneath it.



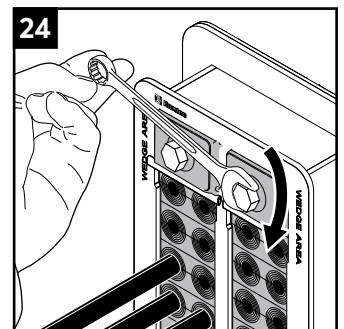
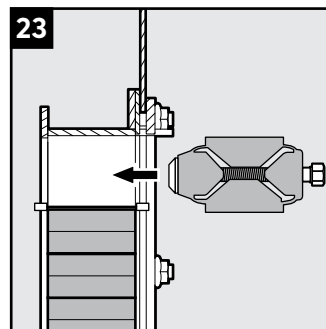
Drop the stayplate on top of the last module.



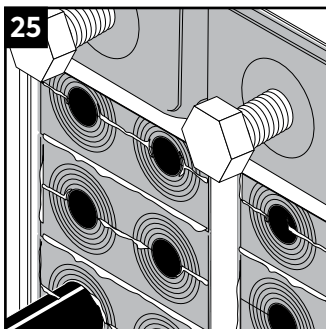
Lubricate the compression units on all sealing sides with Roxtec Lubricant.



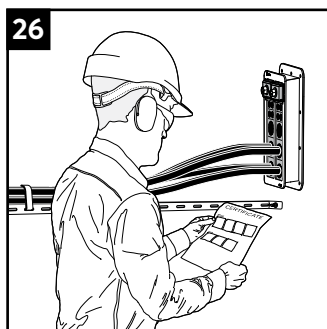
Insert the compression units from the inside of the openings until stop. The compression units can be placed with the screwhead facing either into or out of the opening. Do not tighten the first compression unit until the second compression unit is inserted.



Tighten the screws of the compression units alternately until full stop, approx. 20 Nm.

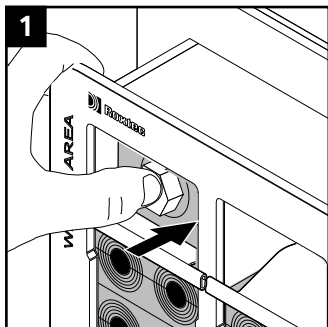


Visible excess lubricant indicates good compression. Make sure that all modules are placed correctly and fully inserted after compression.

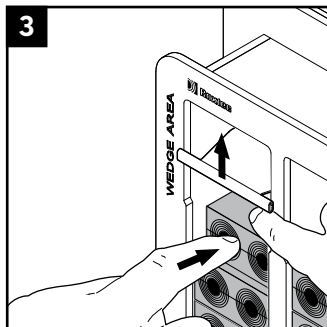
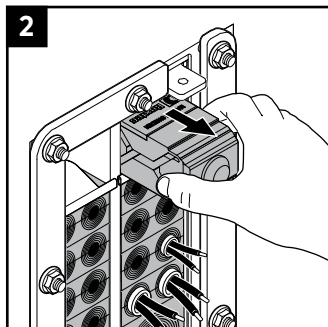


Make a final check! Different approvals or certificates may include amendments or limitations related to this application.

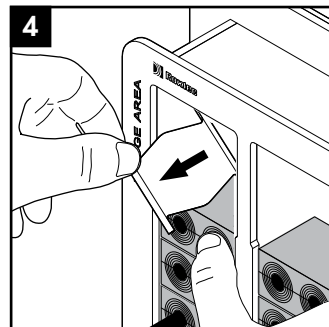
Disassembly and reinstallation



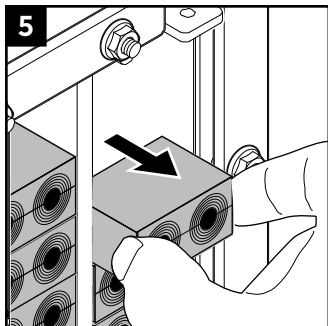
1 Untighten the screws of the compression units and remove them.



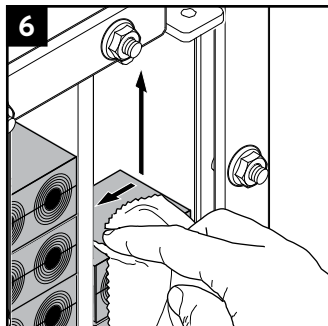
3 Lift up the stayplate and push out the first module from the front side.



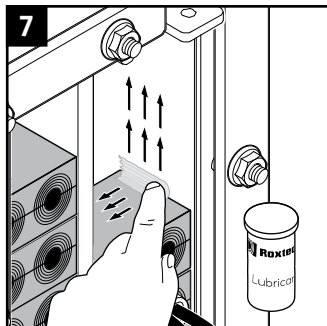
4 Remove the stayplate.



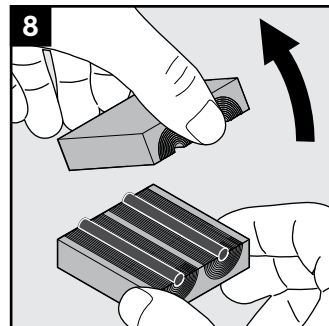
5 Continue to remove the modules by pulling them out from the backside of the frame.



6 Clean the exposed surfaces.



7 Lubricate the exposed surfaces. Especially in the corners.



8 Separate the module halves and continue the reinstallation at step 7 on page 3.

Note

- Wait 24 hours or longer after installation before exposing the cables/pipes to strain or pressure.
- To be used with: Roxtec HD components.
- Cables/pipes shall go straight through the frame.
- Approvals or certificates may include amendments or limitations related to this application.
- The latest version of this and related documents are found at roxtec.com.

Disclaimer

"The Roxtec cable entry sealing system ("the Roxtec system") is a modular-based system of sealing products consisting of different components. Each and every one of the components is necessary for the best performance of the Roxtec system. The Roxtec system has been certified to resist a number of different hazards. Any such certification, and the ability of the Roxtec system to resist such hazards, is dependent on all components that are installed as a part of the Roxtec system. Thus, the certification is not valid and does not apply unless all components installed as part of the Roxtec system are manufactured by or under license from Roxtec ("authorized manufacturer"). Roxtec gives no performance guarantee with respect to the Roxtec system, unless (I) all components installed as part of the Roxtec system are manufactured by an authorized manufacturer and (II) the purchaser is in compliance with (a), and (b), below.

(a) During storage, the Roxtec system or part thereof, shall be kept indoors in its original packaging at room temperature.

(b) Installation shall be carried out in accordance with Roxtec installation instructions in effect from time to time.

The product information provided by Roxtec does not release the purchaser of the Roxtec system, or part thereof, from the obligation to independently determine the suitability of the products for the intended process, installation and/or use.

Roxtec gives no guarantee for the Roxtec system or any part thereof and assumes no liability for any loss or damage whatsoever, whether direct, indirect, consequential, loss of profit or otherwise, occurred or caused by the Roxtec systems or installations containing components not manufactured by an authorized manufacturer and/or occurred or caused by the use of the Roxtec system in a manner or for an application other than for which the Roxtec system was designed or intended.

Roxtec expressly excludes any implied warranties of merchantability and fitness for a particular purpose and all other express or implied representations and warranties provided by statute or common law. User determines suitability of the Roxtec system for intended use and assumes all risk and liability in connection therewith. In no event shall Roxtec be liable for indirect, consequential, punitive, special, exemplary or incidental damages or losses.*



Roxtec International AB
Box 540, 371 23 Karlskrona, SWEDEN
+46 455 36 67 00, info@roxtec.com
www.roxtec.com