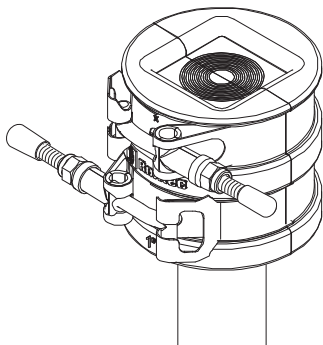
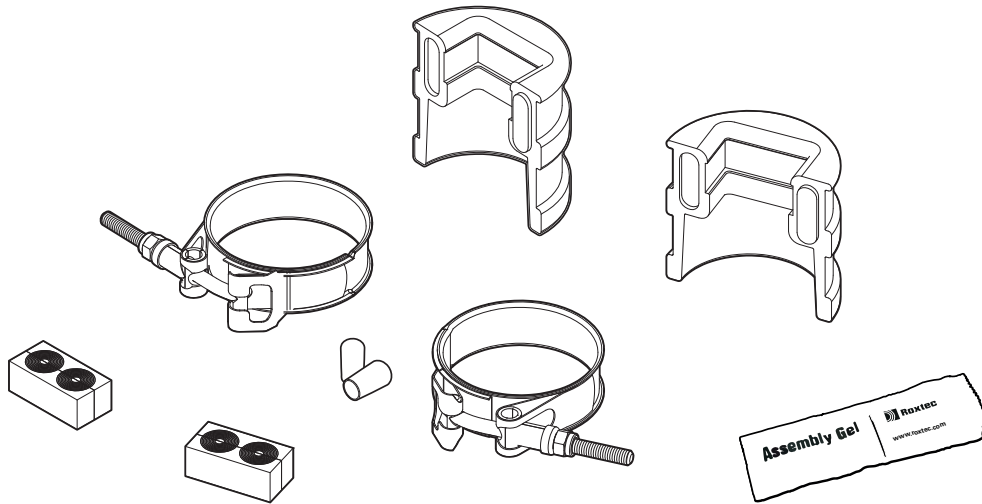
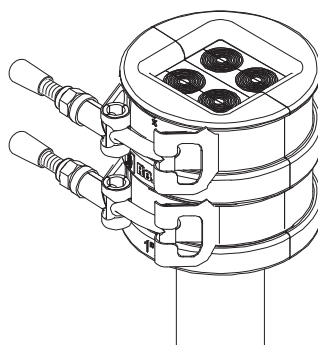


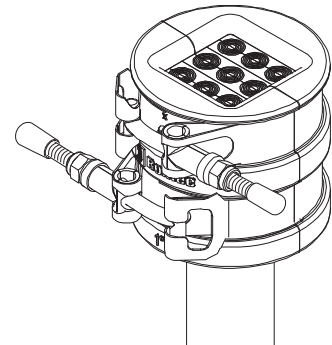
Products



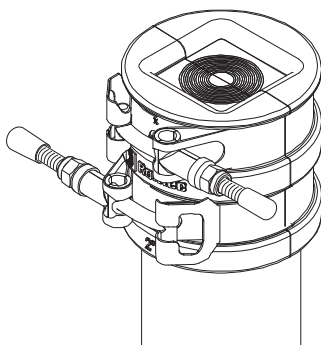
Roxtec Conduit Seal™ 1"/1



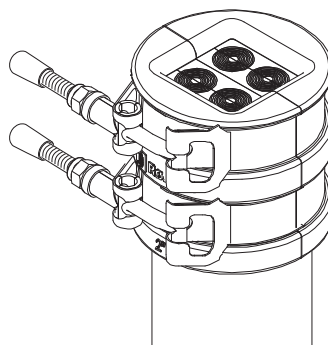
Roxtec Conduit Seal™ 1"/4



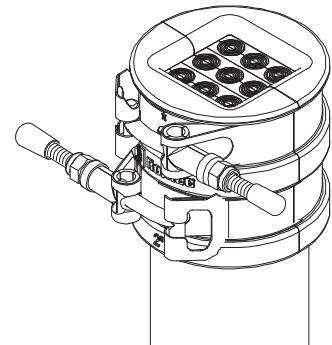
Roxtec Conduit Seal™ 1"/9



Roxtec Conduit Seal™ 2"/1

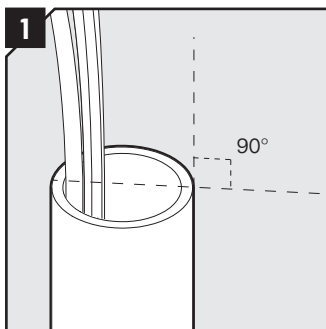


Roxtec Conduit Seal™ 2"/4

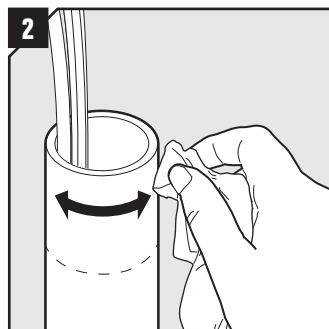


Roxtec Conduit Seal™ 2"/9

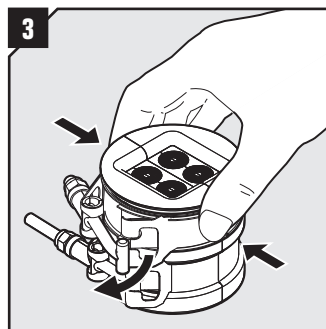
Installation of frame



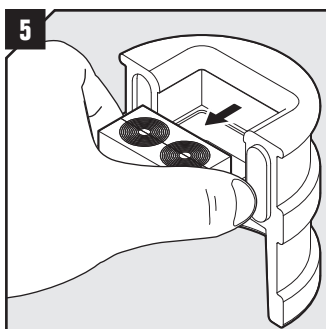
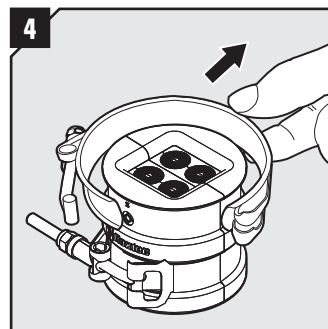
Ensure that the end cut of the conduit is even and perpendicular all around.



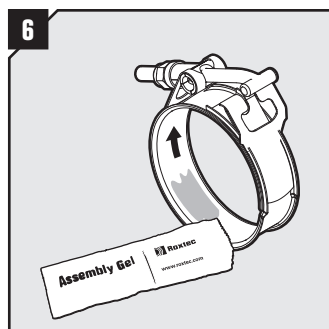
Clean the conduit tube all around.



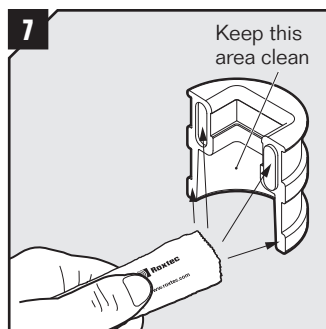
Untighten the nuts of the clamps as much as possible. Compress the clamps to open them. Remove both clamps from the rubber frame.



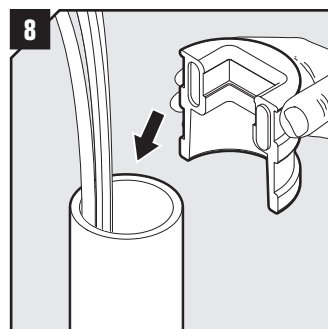
Remove the modules from the rubber frame.



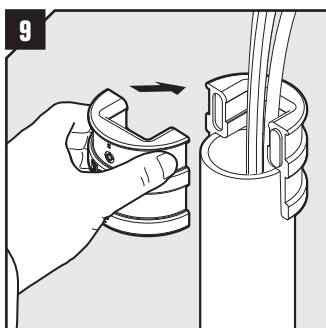
Lubricate one of the clamps all around on the inside surface.



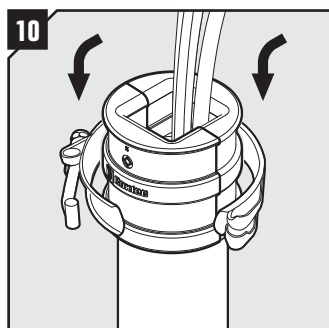
Lubricate the areas shown in the picture on both frame halves. Do not lubricate the area which will be in contact with the conduit tube.



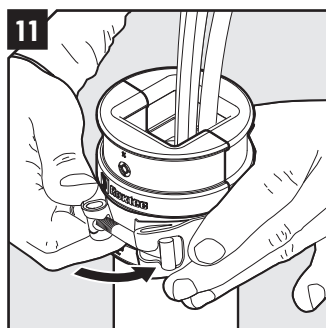
Place a rubber frame half on the conduit tube.



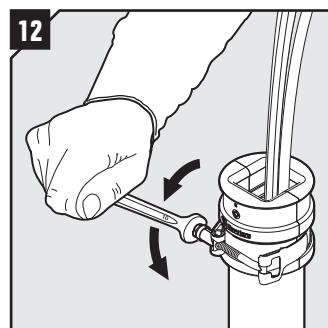
Put the other frame half on the conduit. Ensure that the frame halves sit properly on the end of the conduit.



Open up the clamp and wrap it around the rubber frame in the direction of your choice. Do not open it more than necessary.

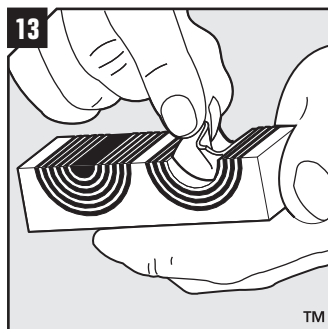


Reassemble the clamp.

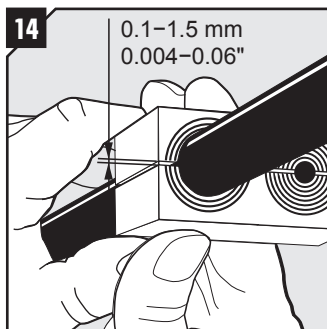


Compress the clamp by tightening the nut until it is secured on the conduit. It shall not be possible to turn the conduit seal.

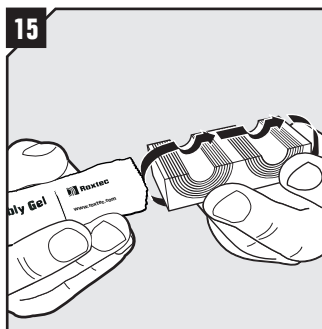
Installation of modules



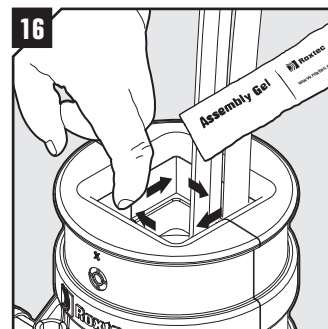
Adapt modules, which are to hold cables or pipes, by peeling off layers until you reach the gap seen in pic. 14. The remaining number of layers on the halves may not differ.



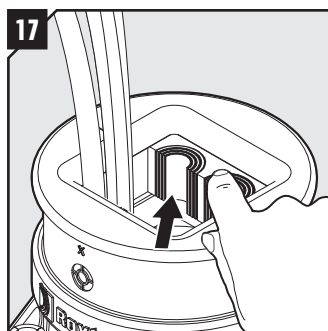
Achieve a 0.1–1.5 mm gap between the two halves when held against the cable. Ensure that both halves have an equal number of layers remaining.



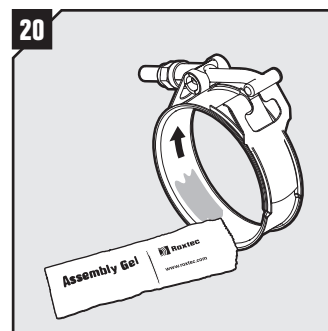
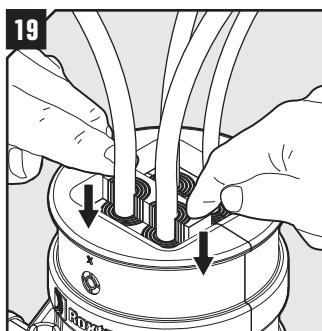
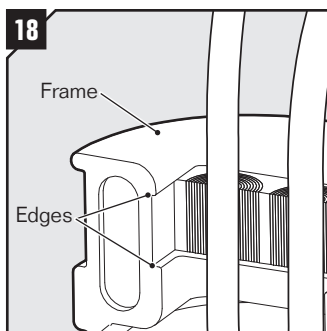
Lubricate all modules for the frame thoroughly, both the inside and the outside surfaces.



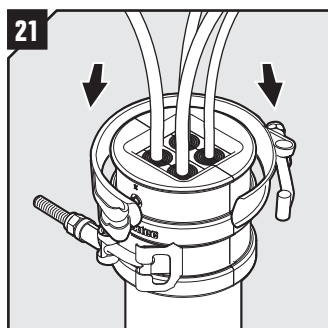
Lubricate the frame thoroughly on the inside surfaces.



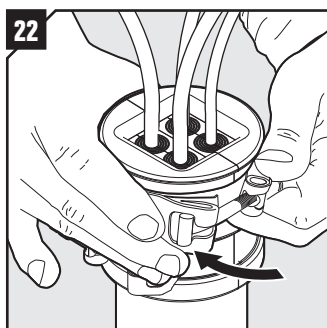
Insert the modules according to your installation plan (transit plan). Make sure that the module enters properly between the edges of the frame.



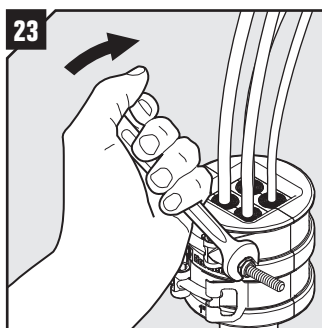
Lubricate the other clamp.



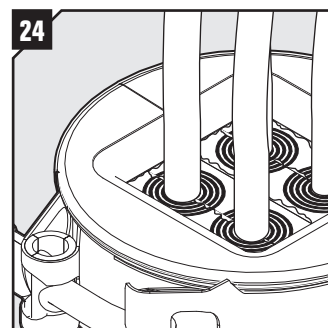
Open up the clamp and wrap it around the rubber frame. Do not open it more than necessary.

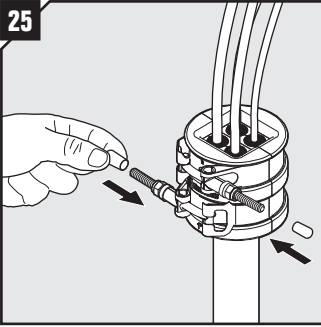


Assemble the clamp.



Compress the seal by tightening the nut of the clamp. Excess lubricant shall be visible directly after installation. Check that there are no visible gaps between cables and modules after compression.





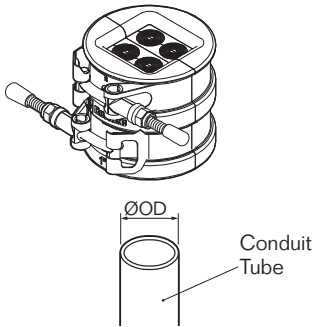
Complete the installation by putting the end caps on to the threads of both screws.

Disassembly

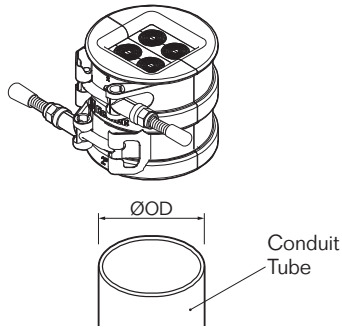
Reverse order

Conduit Tubes

Permitted outer diameter deviations of the Conduit Tube



DN 25/NPS 1" outer diameter span:
Ø32.61 mm (1.284") to Ø33.80 mm (1.331")



DN 50/NPS 2" outer diameter span:
Ø59.53 mm (2.344") to Ø60.72 mm (2.391")

Note

- An incorrectly adapted module shall be replaced (layers shall not be reused).
- Temperature range -60 to +80 °C.
- Cables shall go straight through the seal.
- To be used with GM modules.
- EMT 1" and EMT 2" variants for EMT pipes are available on request.

DISCLAIMER

"The Roxtec cable entry sealing system ("the Roxtec system") is a modular-based system of sealing products consisting of different components. Each and every one of the components is necessary for the best performance of the Roxtec system. The Roxtec system has been certified to resist a number of different hazards. Any such certification, and the ability of the Roxtec system to resist such hazards, is dependent on all components that are installed as a part of the Roxtec system. Thus, the certification is not valid and does not apply unless all components installed as part of the Roxtec system are manufactured by or under license from Roxtec ("authorized manufacturer"). Roxtec gives no performance guarantee with respect to the Roxtec system, unless (i) all components installed as part of the Roxtec system are manufactured by an authorized manufacturer and (ii) the purchaser is in compliance with (a), and (b), below.

(a) During storage, the Roxtec system or part thereof, shall be kept indoors in its original packaging at room temperature.

(b) Installation shall be carried out in accordance with Roxtec installation instructions in effect from time to time.

The product information provided by Roxtec does not release the purchaser of the

Roxtec system, or part thereof, from the obligation to independently determine the suitability of the products for the intended process, installation and/or use. Roxtec gives no guarantee for the Roxtec system or any part thereof and assumes no liability for any loss or damage whatsoever, whether direct, indirect, consequential, loss of profit or otherwise, occurred or caused by the Roxtec systems or installations containing components not manufactured by an authorized manufacturer and/or occurred or caused by the use of the Roxtec system in a manner or for an application other than for which the Roxtec system was designed or intended.

Roxtec expressly excludes any implied warranties of merchantability and fitness for a particular purpose and all other express or implied representations and warranties provided by statute or common law. User determines suitability of the Roxtec system for intended use and assumes all risk and liability in connection therewith. In no event shall Roxtec be liable for indirect, consequential, punitive, special, exemplary or incidental damages or losses."



Roxtec International AB
Box 540, 371 23 Karlskrona, SWEDEN
PHONE +46 455 36 67 00, FAX +46 455 820 12
EMAIL info@roxtec.com, www.roxtec.com