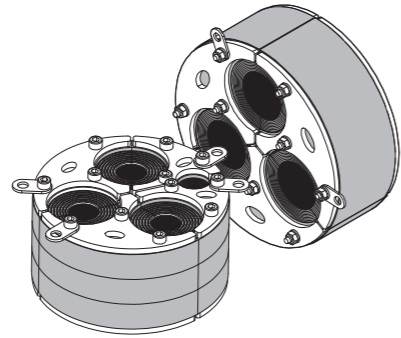


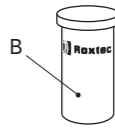
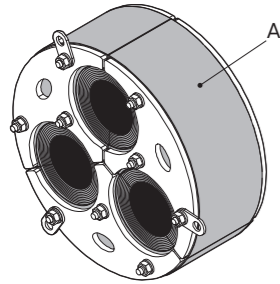
Installation instructions Roxtec H3 UG™ seal



Safety information

Roxtec recommends that all installations are performed without facility operation. Follow national regulations and installation codes. Any action affecting the routed service should be performed according to manufacturer recommendations.

Components



A. Roxtec H3 UG seal
B. Roxtec Lubricant

Additional information



Scan QR code or visit roxtec.com for additional information, such as drawings, apertures, videos, ratings and certificates.

Technical data

Name	Aperture dimension Ø (mm)	For cable/pipe Ø (mm)	Torque (Nm)	Tool size (mm)
H3 135 UG	135 – 138	23 – 43	6 – 9	6
H3 150 UG	150 – 153	24 – 52	6 – 9	6
H3 185 UG	185 – 188	48 – 64	6 – 9	6
H3 200 UG	200 – 203	48 – 68	6 – 9	6
H3+1 150 UG	150 – 153	10 – 53	6 – 9	10
H3+1 200 UG	200 – 203	10 – 68	6 – 9	10

The amount of torque needed to compress the seal depends on several things, e.g cable or pipe size, amount of used lubricant, aperture size or material in the cable sheath, etc.

Note

- For optimum reliability, wait 24 hours or longer after installation before exposing the cables/pipes to strain or pressure.
- Cables/pipes shall be parallel to the sleeve/aperture.
- Cable/pipe with a considerable weight needs to be supported to prevent damage or subsidence to the seal.
- Approvals or certificates may include amendments or limitations related to this application.
- A seal with core is spare capacity.
- The latest version of this and related documents are found at roxtec.com.

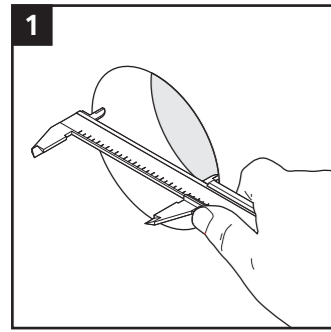
To be installed in

- Knock-out sleeve
- Core-drilled hole
- Non-perpendicular hole
- Bolted sleeve
- Welded sleeve

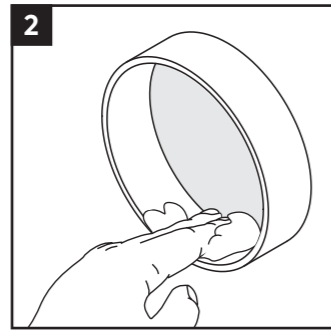
Tools

- Allen key (not included)
- Spanner (not included)
- Caliper (not included)
- Brush (not included)

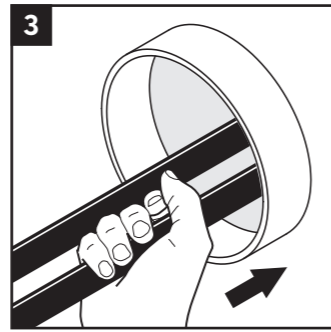
Installation



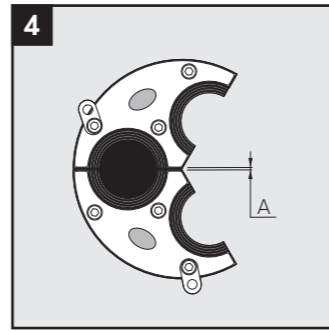
1 Make or verify an aperture.



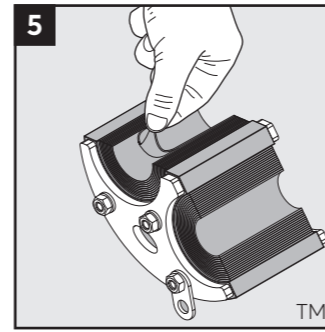
2 Clean the aperture from any residues.



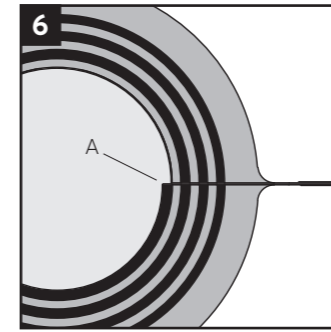
3 Pull the cables/pipes straight through the aperture.



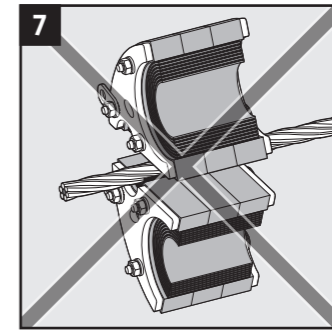
4 Achieve a gap of 0-1.0 mm (A) between the parts for all cables/pipes.



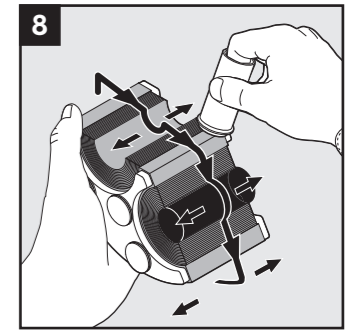
5 Adapt the seal by peeling off layers.



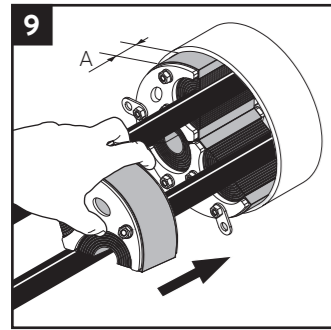
6 The number of layers may not differ (A) by more than one between the corresponding seal parts.



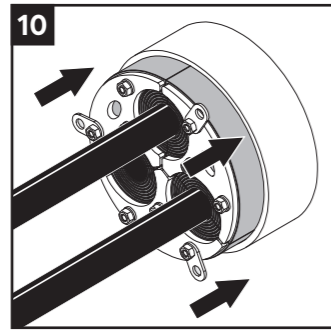
7 Irregular shaped ground wires or cables are not allowed.



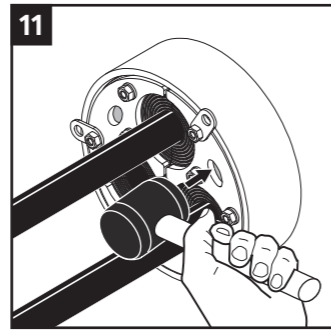
8 Lubricate all parts of the seal thoroughly all around. Lubricate remaining cores on the sealing surface.



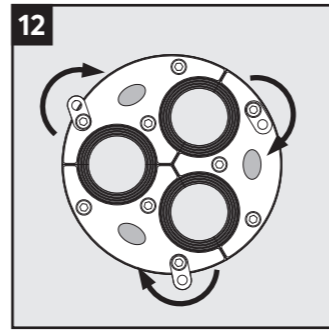
9 Insert the seal parts into the sleeve. Leave a 10 mm margin (A) to simplify installation.



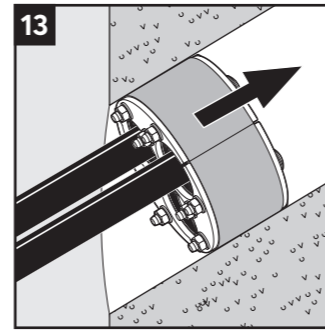
10 Press all three parts of the seal into the sleeve simultaneously.



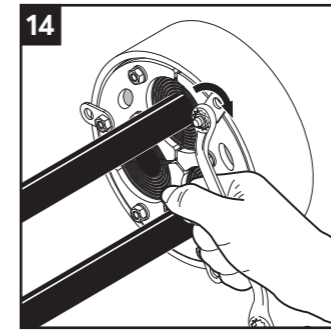
11 In small apertures, a hammer can be used to position the seal.



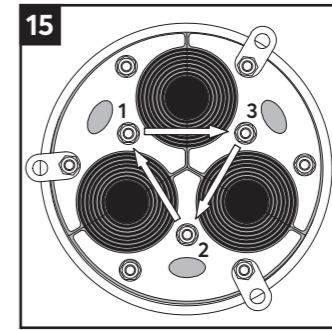
12 When the aperture is not perpendicular to the wall, fold in the tabs.



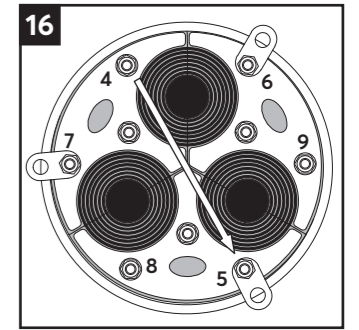
13 Insert the seal in the non perpendicular aperture.



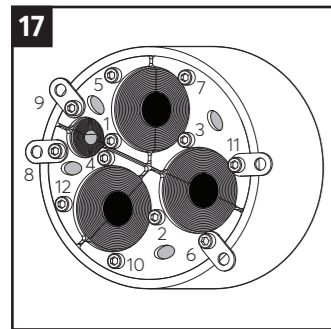
14 Fully tighten the nuts crosswise in small steps.



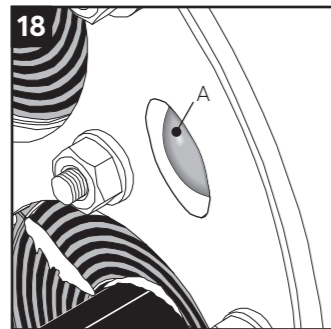
15 Tighten the inner nuts partially.



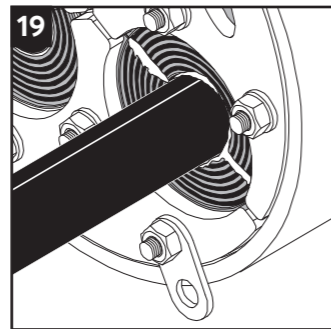
16 Tighten the outer nuts partially, and then continue with the inner nuts.



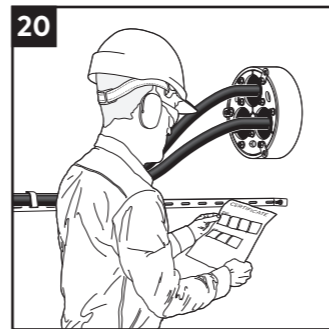
17 Tightening order for Roxel H3+1 seal.



18 The inner rubber part shall create a visible bulge (A) in each hole.



19 Excessive visible lubricant is a sign of good compression.

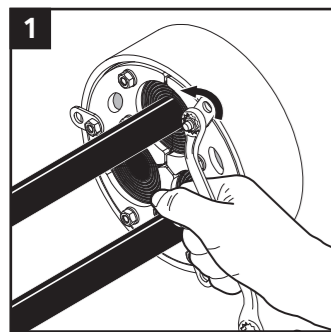


20 Make a final check! Different approvals or certificates may include amendments or limitations related to this application.

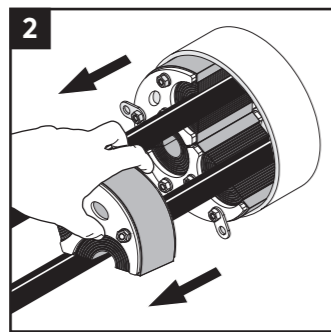
After installation inspection

- Are the screws tightened evenly?
- Are the layers peeled correctly?
- Is lubricant protruding?
- Is the rubber bulging?

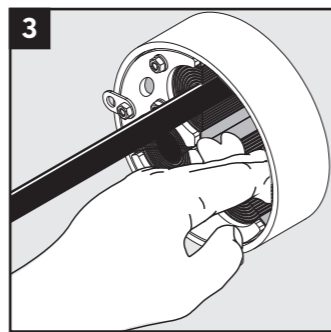
Disassembly and reinstallation



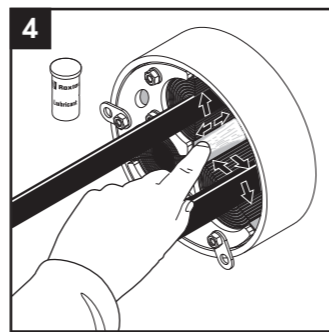
1 Untighten the nuts crosswise in small steps. Make sure the nuts are completely loose.



2 Remove the seal parts needed.



3 Clean the exposed sealing surfaces.



4 Lubricate the exposed sealing surfaces. Continue the reinstallation.

Disclaimer

"The Roxel cable and pipe entry sealing system ('the Roxel system') is a modular-based system of sealing products consisting of different components. Each and every one of the components is necessary for the best performance of the Roxel system. The Roxel system has been certified to resist a number of different hazards. Any such certification, and the ability of the Roxel system to resist such hazards, is dependent on all components that are installed as a part of the Roxel system. Thus, the certification is not valid and does not apply unless all components installed as part of the Roxel system are manufactured by or under license from Roxel (authorized manufacturer). Roxel gives no performance guarantee with respect to the Roxel system, unless (I) all components installed as part of the Roxel system are manufactured by an authorized manufacturer and (II) the purchaser is in compliance with (a), and (b), below.
(a) During storage, the Roxel system or part thereof, shall be kept indoors in its original packaging at room temperature.
(b) Installation shall be carried out in accordance with Roxel installation instructions in effect from time to time.
The product information provided by Roxel does not release the purchaser of the Roxel system, or part thereof, from the obligation to independently

determine the suitability of the products for the intended process, installation and/or use.
Roxel gives no guarantee for the Roxel system or any part thereof and assumes no liability for any loss or damage whatsoever, whether direct, indirect, consequential, loss of profit or otherwise, occurred or caused by the Roxel systems or installations containing components not manufactured by an authorized manufacturer and/or occurred or caused by the use of the Roxel system in a manner or for an application other than for which the Roxel system was designed or intended.
Roxel expressly excludes any implied warranties of merchantability and fitness for a particular purpose and all other express or implied representations and warranties provided by statute or common law. User determines suitability of the Roxel system for intended use and assumes all risk and liability in connection therewith. In no event shall Roxel be liable for indirect, consequential, punitive, special, exemplary or incidental damages or losses.
The Roxel products are offered and sold in accordance with the conditions of the Roxel General Terms of Sales. The latest version of the Roxel General Terms of Sales can be found and downloaded from roxtec.com/general-terms-of-sales."



Roxel International AB
Box 540, 371 23 Karlskrona, SWEDEN
+46 455 36 67 00, info@roxtec.com
www.roxtec.com