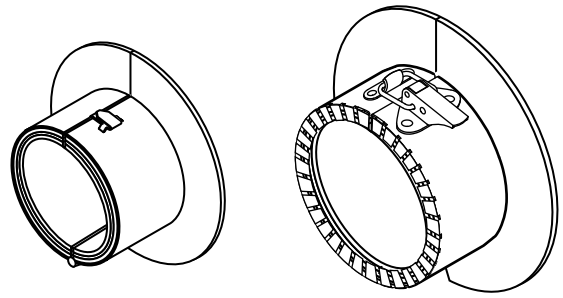


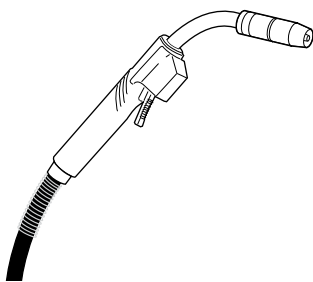
# Installation instructions

## Roxtec Sleev-it™

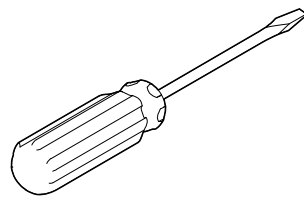
### Fire penetration seal



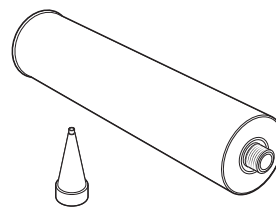
## Tools



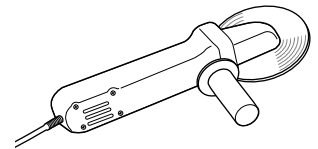
Weld equipment (not included)



Screwdriver (not included)



Sealant (not included)



Side grinder (not included)

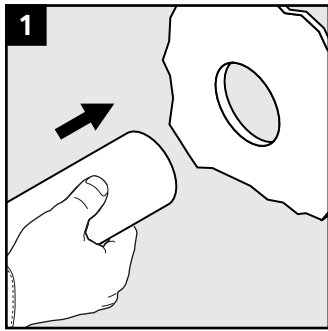
## Technical data

Note: Visit Roxtec database for optional sizes.

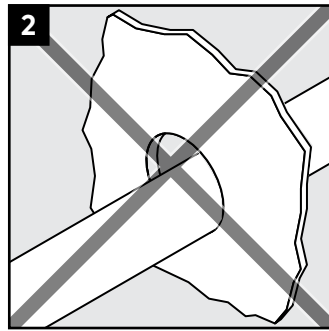
Name	Aperture dimension Ø (mm)	For cable/pipe Ø (mm)
SLEEV-IT FC-MAR16M	18 – 26	16
SLEEV-IT FC-MAR20M	22 – 30	20
SLEEV-IT FC-MAR25M	27 – 35	25
SLEEV-IT FC-MAR32M	34 – 42	32
SLEEV-IT FC-MAR40M	42 – 50	40
SLEEV-IT FC-MAR50M (1.5")	50 – 58	48.3
SLEEV-IT FC-MAR60M (2")	62 – 70	60.3
SLEEV-IT FC-MAR63M	65 – 73	63
SLEEV-IT FC-MAR66M	68 – 76	66
SLEEV-IT FC-MAR75M	77 – 85	75
SLEEV-IT FC-MAR82M	84 – 92	82
SLEEV-IT FC-MAR90M (3")	91 – 99	88.9
SLEEV-IT FC-MAR110M	112 – 120	110
SLEEV-IT FC-MAR115M (4")	116 – 124	114.3
SLEEV-IT FC-MAR125M	127 – 135	125
SLEEV-IT FC-MAR140M	142 – 150	140
SLEEV-IT FC-MAR160M	162 – 170	160
SLEEV-IT FC-MAR169M (6")	170 – 178	168.3
SLEEV-IT FC-MAR200M	202 – 210	200
SLEEV-IT FC-MAR219M (8")	221 – 229	219.1
SLEEV-IT FC-MAR225M	227 – 235	225

# Installation

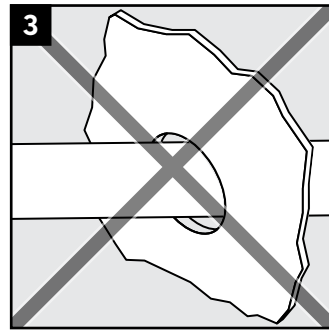
Pre-routed pipe



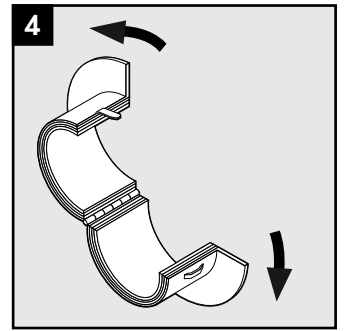
1 Route the pipe through the aperture. Clamp it straight and centered.



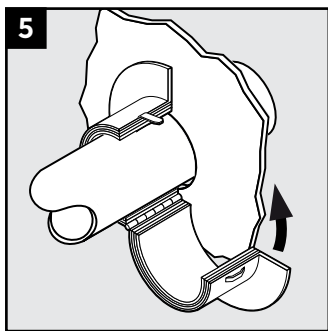
2 Not acceptable. The pipe shall not be in contact with the structure.



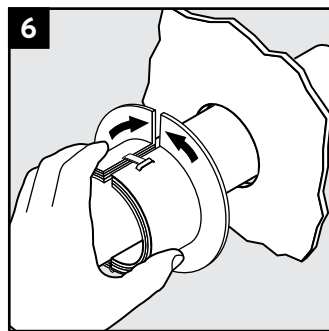
3 Not acceptable. The pipe shall go straight through the seal.



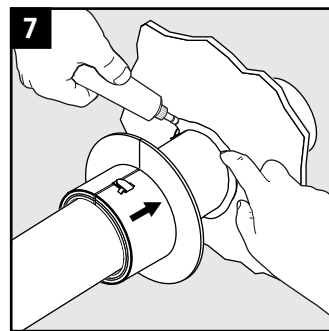
4 Open the fire penetration seal.



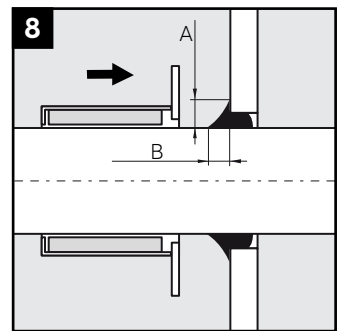
5 Wrap the seal around the pipe.



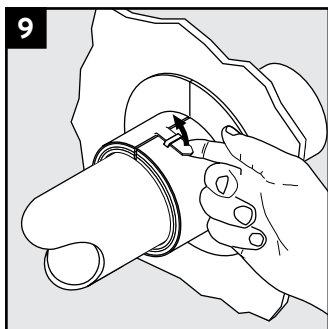
6 Close the fire penetration seal.



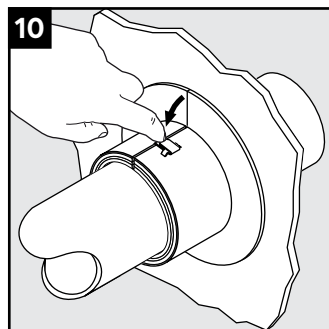
7 Apply Roxel sealant into the annular gap between the plastic pipe and the structure.



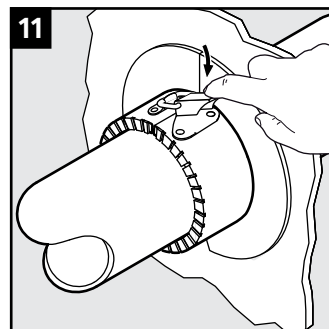
8 Arrange a chamfered filling extending at least 10 mm (B) along the plastic pipe and with an offset at least 10 mm (A) towards/onto the structure.



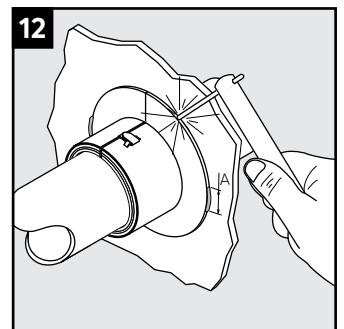
9 For size 16-40: Lock the fire penetration seal by pulling the tab over.



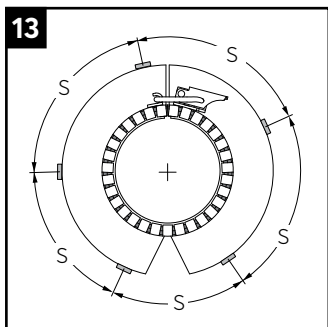
10 For size 16-40: Fire penetration seal locked.



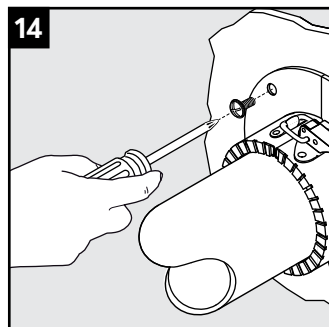
11 For size 50-324: Push down the lever to lock the fastener.



12 Fasten the sleeve to the structure at two opposing locations with tack welds. The length of the welds should be 15-20 mm (A).



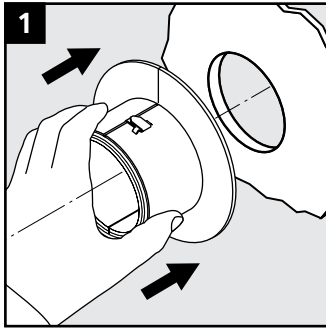
13 Evenly distribute tack welds around the flange separated by  $S = 100-150$  mm.



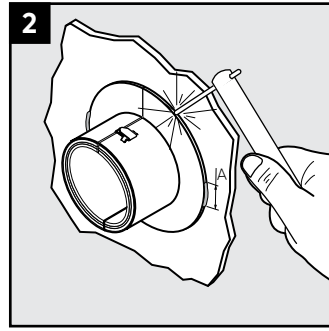
14 Alternative: Drill holes in the flange separated by 100-150 mm and use suitable fasteners to secure it to the structure.

## Installation

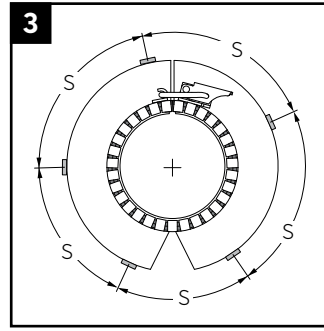
Non pre-routed pipe.



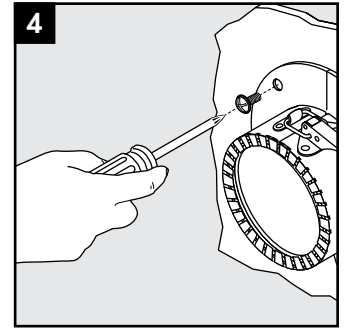
Align the centerlines of the sleeve and aperture so that the pipe will not collide when routed.



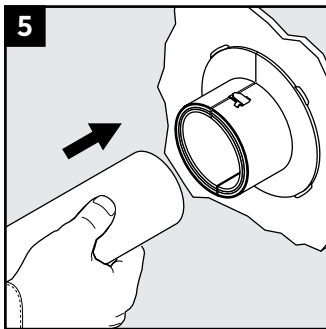
Fasten the sleeve to the structure at two opposing locations with tack welds. The length of the welds should be 15-20 mm (A).



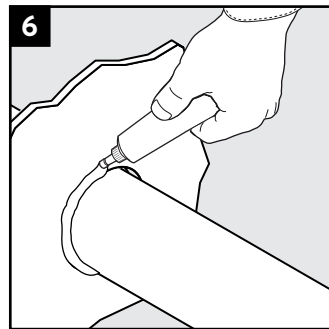
Evenly distribute tack welds around the flange separated by  $S = 100-150$  mm.



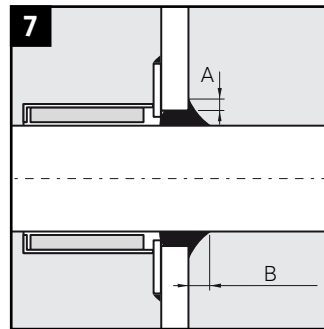
Alternative: Drill holes in the flange separated by 100-150 mm and use suitable fasteners to secure it to the structure.



Route the pipe through the aperture. Clamp it straight and centered.

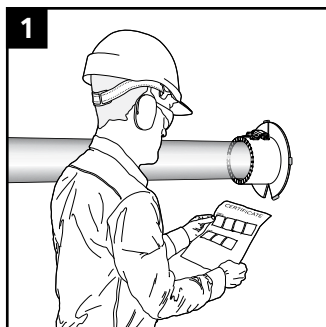


Fill up the annular gap with sealant from the other side of the structure.



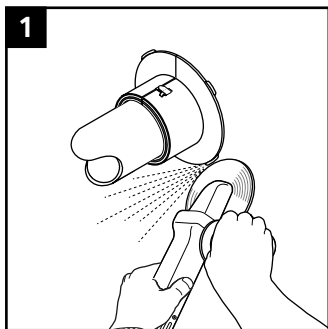
Arrange a chamfered filling extending at least 5 mm (B) along the plastic pipe and at least 5 mm (A) onto the structure.

## Final check

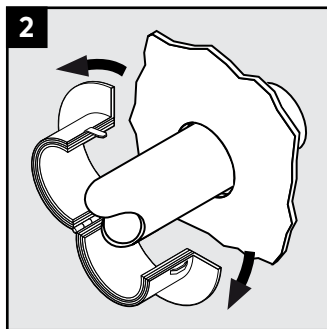


Make a final check! Different approvals or certificates may include amendments or limitations related to this application.

## Disassembly



Use a side grinder or similar tool to remove the welds holding the fire penetration seal.



Open the fire penetration seal and remove it.

## Note

- The sealant is used as cold smoke protection.
- Make sure the pipes are firmly clamped to avoid movement inside the sleeve.
- Fasteners penetrating the structure must be sealed for cold smoke.
- See type approval certificates for detailed application information.

## Disclaimer

\*The Roxtec cable entry sealing system ("the Roxtec system") is a modular-based system of sealing products consisting of different components. Each and every one of the components is necessary for the best performance of the Roxtec system. The Roxtec system has been certified to resist a number of different hazards. Any such certification, and the ability of the Roxtec system to resist such hazards, is dependent on all components that are installed as a part of the Roxtec system. Thus, the certification is not valid and does not apply unless all components installed as part of the Roxtec system are manufactured by or under license from Roxtec ("authorized manufacturer"). Roxtec gives no performance guarantee with respect to the Roxtec system, unless (I) all components installed as part of the Roxtec system are manufactured by an authorized manufacturer and (II) the purchaser is in compliance with (a), and (b), below.

(a) During storage, the Roxtec system or part thereof, shall be kept indoors in its original packaging at room temperature.

(b) Installation shall be carried out in accordance with Roxtec installation instructions in effect from time to time.

The product information provided by Roxtec does not release the purchaser of the Roxtec system, or part thereof, from the obligation to independently determine the suitability of the products for the intended process, installation and/or use.

Roxtec gives no guarantee for the Roxtec system or any part thereof and assumes no liability for any loss or damage whatsoever, whether direct, indirect, consequential, loss of profit or otherwise, occurred or caused by the Roxtec systems or installations containing components not manufactured by an authorized manufacturer and/or occurred or caused by the use of the Roxtec system in a manner or for an application other than for which the Roxtec system was designed or intended.

Roxtec expressly excludes any implied warranties of merchantability and fitness for a particular purpose and all other express or implied representations and warranties provided by statute or common law. User determines suitability of the Roxtec system for intended use and assumes all risk and liability in connection therewith. In no event shall Roxtec be liable for indirect, consequential, punitive, special, exemplary or incidental damages or losses.\*



Roxtec International AB  
Box 540, 371 23 Karlskrona, SWEDEN  
+46 455 36 67 00, info@roxtec.com  
www.roxtec.com