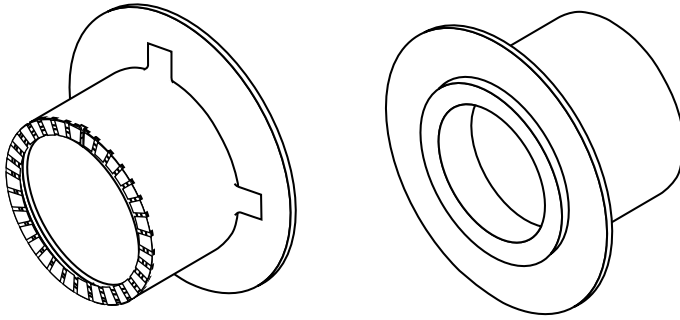
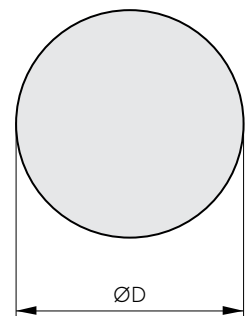


## Installation instructions Roxtec Sleeve-it™ Waterproof penetration seal

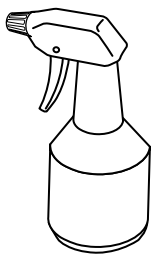


### Aperture dimensions

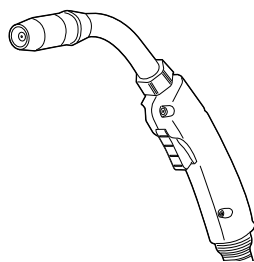
Type:	Pipe outer diam Ø (mm)	Recommended aperture ØD (mm)	Art. no
SLEEV-IT WT - MAR16M	16	41 +/-5	106315
SLEEV-IT WT - MAR20M	20	49 +/-5	106316
SLEEV-IT WT - MAR25M	25	51 +/-5	106319
SLEEV-IT WT - MAR32M	32	58 +/-5	106322
SLEEV-IT WT - MAR40M	40	69 +/-5	106325
SLEEV-IT WT - MAR50M (1.5")	48,3	79 +/-5	106359
SLEEV-IT WT - MAR50M	50	79 +/-5	106328
SLEEV-IT WT - MAR60M (2")	60,3	90 +/-5	106362
SLEEV-IT WT - MAR63M	63	93 +/-5	106331
SLEEV-IT WT - MAR75M	75	112 +/-5	106334
SLEEV-IT WT - MAR90M (3")	88,9	134 +/-5	106365
SLEEV-IT WT - MAR90M	90	132 +/-5	106337
SLEEV-IT WT - MAR110M	110	153 +/-5	106341
SLEEV-IT WT - MAR115M (4")	114,3	152 +/-5	106371
SLEEV-IT WT - MAR125M	125	172 +/-5	106344
SLEEV-IT WT - MAR140M	140	180 +/-5	106347
SLEEV-IT WT - MAR160M	160	215 +/-5	106350
SLEEV-IT WT - MAR169M (6")	168,3	225 +/-5	106373
SLEEV-IT WT - MAR200M	200	250 +/-5	106353
SLEEV-IT WT - MAR219M (8")	219,1	286 +/-5	106375
SLEEV-IT WT - MAR225M	225	290 +/-5	106356
SLEEV-IT WT - MAR273M (10")	273	356 +/-5	106378
SLEEV-IT WT - MAR324M (12")	323,9	406 +/-5	106381



### Tools needed

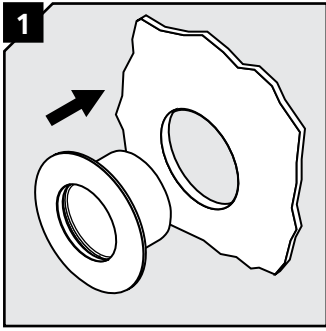


Spray bottle with soapy water

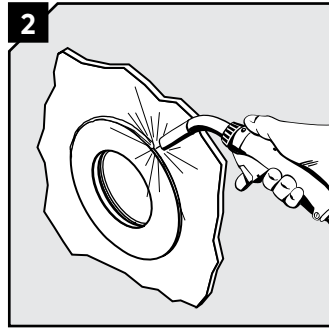


GMAW welder

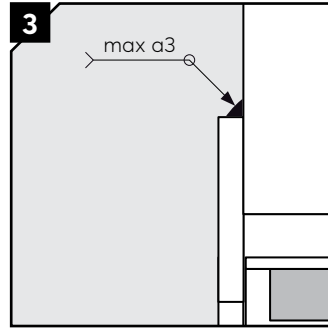
## Installation



Insert the Roxtec Sleeve-it Waterproof penetration seal into the aperture.

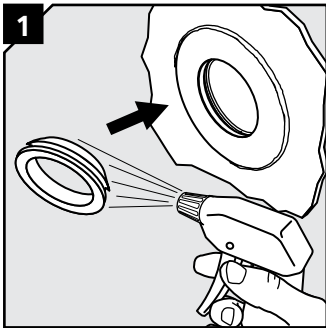


Remove the rubber grommet from the flange. Tight weld the flange to the structure using the GMAW-process.

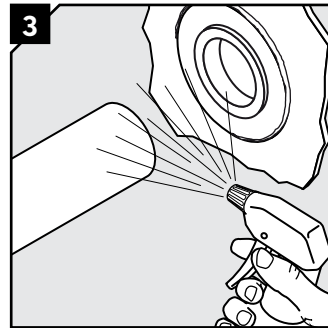
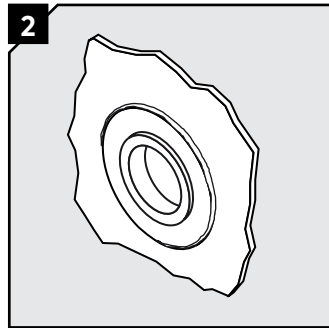


Make a waterproof weld using GMAW to reduce the heat input.

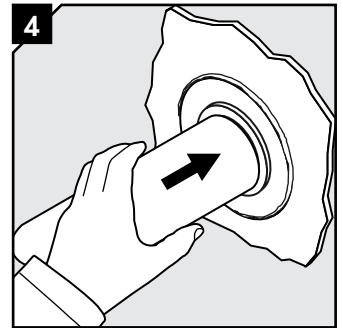
## Routing the pipe, alternative 1



Lubricate the grommet and flange with soap water and insert the rubber grommet.

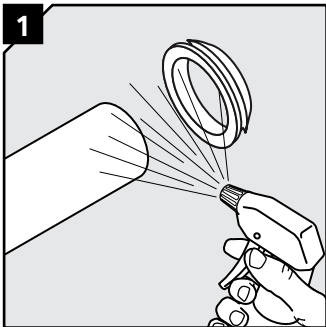


Lubricate the pipe and the rubber grommet thoroughly with soap water.

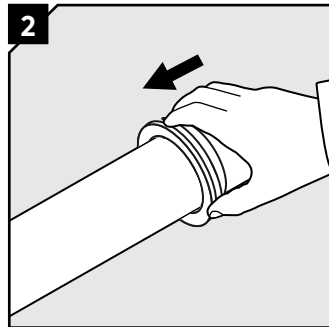


Gently route the pipe through the seal from the grommet side.

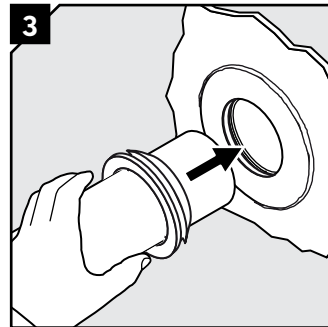
## Routing the pipe, alternative 2



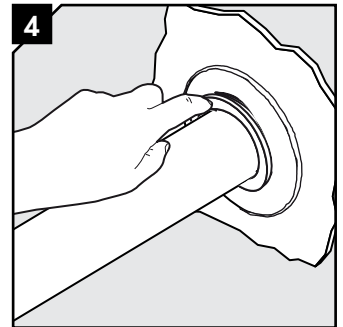
Lubricate the pipe and the rubber grommet thoroughly with soap water.



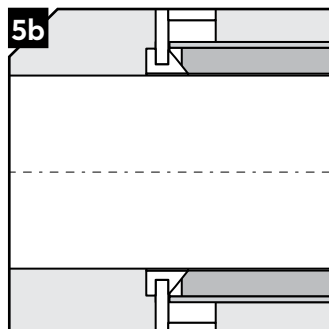
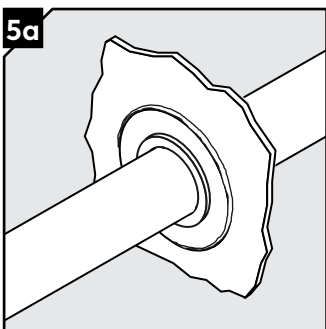
Mount the rubber grommet onto the pipe.



Gently route the pipe through the sleeve.

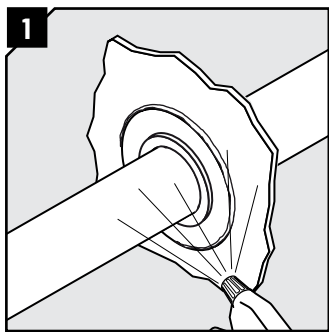


Lubricate the grommet with soap water. Insert the grommet into the sleeve.

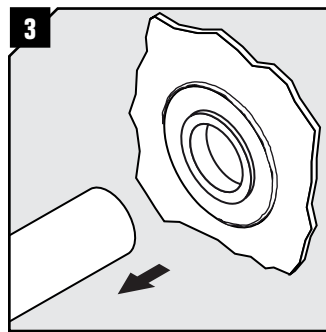
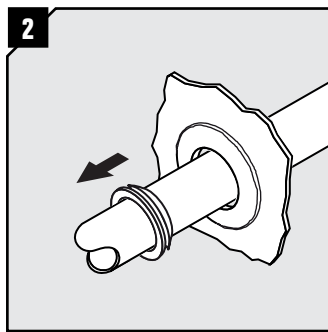


Make sure the grommet is properly inserted and secured in the sleeve.

## Disassembly



Lubricate the pipe and slide of the grommet



Alternatively remove the pipe.

## Note

- Please see type approval certificates for detailed application information.

## Disclaimer

\*The Roxtec cable entry sealing system ("the Roxtec system") is a modular-based system of sealing products consisting of different components. Each and every one of the components is necessary for the best performance of the Roxtec system. The Roxtec system has been certified to resist a number of different hazards. Any such certification, and the ability of the Roxtec system to resist such hazards, is dependent on all components that are installed as a part of the Roxtec system. Thus, the certification is not valid and does not apply unless all components installed as part of the Roxtec system are manufactured by or under license from Roxtec ("authorized manufacturer"). Roxtec gives no performance guarantee with respect to the Roxtec system, unless (I) all components installed as part of the Roxtec system are manufactured by an authorized manufacturer and (II) the purchaser is in compliance with (a), and (b), below.

(a) During storage, the Roxtec system or part thereof, shall be kept indoors in its original packaging at room temperature.

(b) Installation shall be carried out in accordance with Roxtec installation instructions in effect from time to time.

The product information provided by Roxtec does not release the purchaser of the Roxtec system, or part thereof, from the obligation to independently determine the suitability of the products for the intended process, installation and/or use.

Roxtec gives no guarantee for the Roxtec system or any part thereof and assumes no liability for any loss or damage whatsoever, whether direct, indirect, consequential, loss of profit or otherwise, occurred or caused by the Roxtec systems or installations containing components not manufactured by an authorized manufacturer and/or occurred or caused by the use of the Roxtec system in a manner or for an application other than for which the Roxtec system was designed or intended.

Roxtec expressly excludes any implied warranties of merchantability and fitness for a particular purpose and all other express or implied representations and warranties provided by statute or common law. User determines suitability of the Roxtec system for intended use and assumes all risk and liability in connection therewith. In no event shall Roxtec be liable for indirect, consequential, punitive, special, exemplary or incidental damages or losses.\*



Roxtec International AB  
Box 540, 371 23 Karlskrona, SWEDEN  
PHONE +46 455 36 67 00, FAX +46 455 820 12  
EMAIL info@roxtec.com, www.roxtec.com