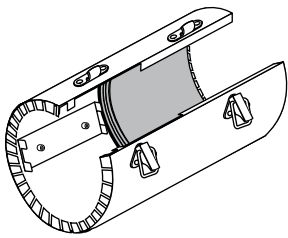
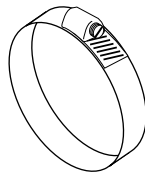


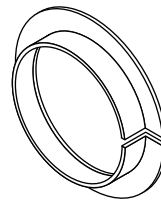
## Parts and tools



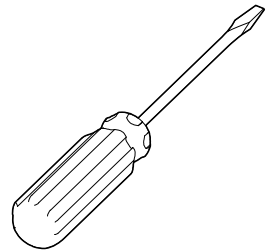
Transition collar



Jubilee clip

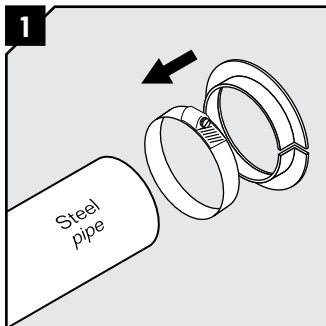


Hanging bracket

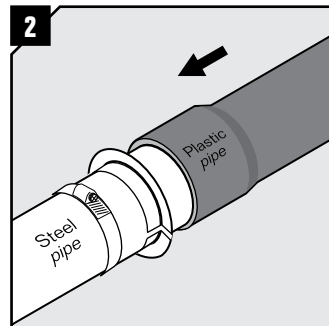


Screwdriver

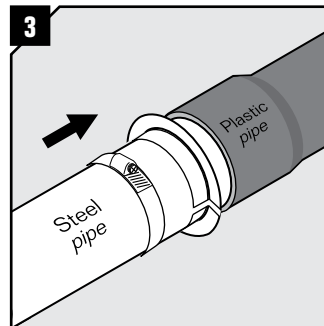
## Installation



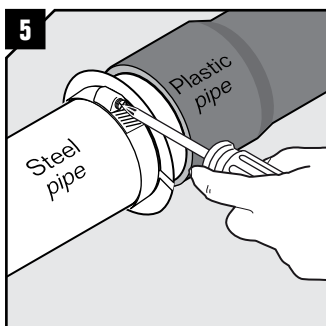
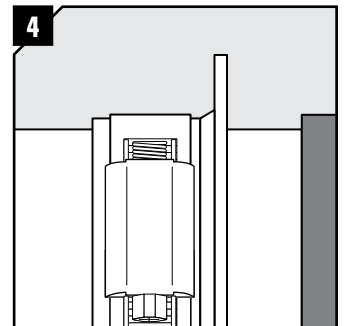
1 Position jubilee clip and hanging bracket on steel pipe.



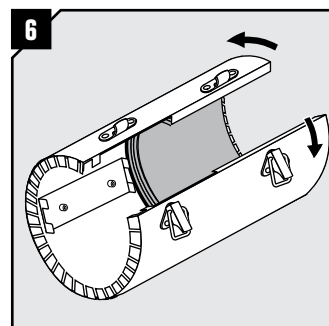
2 Position plastic pipe onto the steel pipe.



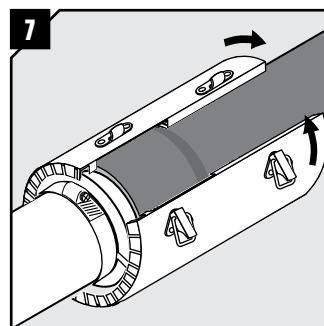
3 Position hanging bracket on steel pipe close to plastic pipe accommodating transition collar slot.



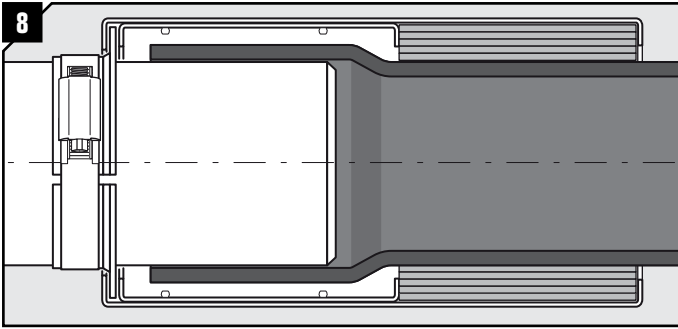
5 Tighten the jubilee clip to secure the hanging bracket.



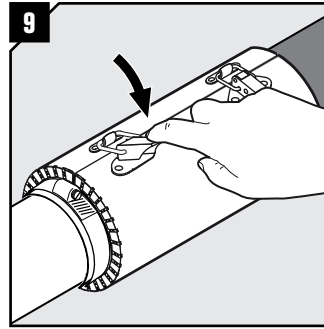
6 Open the transition collar.



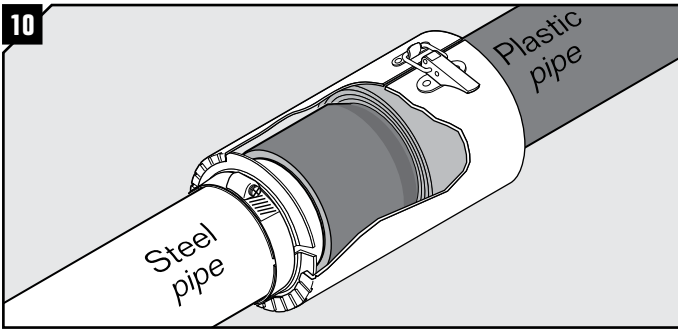
7 Install the transition collar onto the hanging bracket. Make sure that the intumescent material is on the plastic pipe, not on the steel pipe.



Make sure that the transition between the plastic pipe and the metal pipe is situated as shown in the picture.

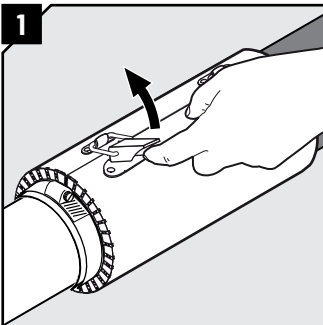


Close the transition collar.

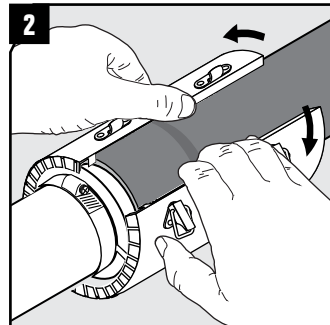


This cross-section view shows the finalized installation.

## Disassembly



Open the levers of the transition collar.



Open up the transition collar and remove it.

## Note

- Also applicable for bell housing type of plastic pipe joint.
- See type approval certificates for detailed application information.

## DISCLAIMER

"The Roxtec cable entry sealing system ("the Roxtec system") is a modular-based system of sealing products consisting of different components. Each and every one of the components is necessary for the best performance of the Roxtec system. The Roxtec system has been certified to resist a number of different hazards. Any such certification, and the ability of the Roxtec system to resist such hazards, is dependent on all components that are installed as a part of the Roxtec system. Thus, the certification is not valid and does not apply unless all components installed as part of the Roxtec system are manufactured by or under license from Roxtec ("authorized manufacturer"). Roxtec gives no performance guarantee with respect to the Roxtec system, unless (I) all components installed as part of the Roxtec system are manufactured by an authorized manufacturer and (II) the purchaser is in compliance with (a), and (b), below.

(a) During storage, the Roxtec system or part thereof, shall be kept indoors in its original packaging at room temperature.

(b) Installation shall be carried out in accordance with Roxtec installation instructions in effect from time to time.

The product information provided by Roxtec does not release the purchaser of the

Roxtec system, or part thereof, from the obligation to independently determine the suitability of the products for the intended process, installation and/or use. Roxtec gives no guarantee for the Roxtec system or any part thereof and assumes no liability for any loss or damage whatsoever, whether direct, indirect, consequential, loss of profit or otherwise, occurred or caused by the Roxtec systems or installations containing components not manufactured by an authorized manufacturer and/or occurred or caused by the use of the Roxtec system in a manner or for an application other than for which the Roxtec system was designed or intended.

Roxtec expressly excludes any implied warranties of merchantability and fitness for a particular purpose and all other express or implied representations and warranties provided by statute or common law. User determines suitability of the Roxtec system for intended use and assumes all risk and liability in connection therewith. In no event shall Roxtec be liable for indirect, consequential, punitive, special, exemplary or incidental damages or losses."



Roxtec International AB  
 Box 540, 371 23 Karlskrona, SWEDEN  
 PHONE +46 455 36 67 00, FAX +46 455 820 12  
 EMAIL info@roxtec.com, www.roxtec.com