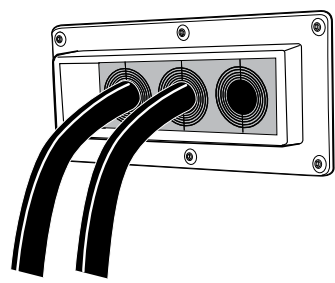
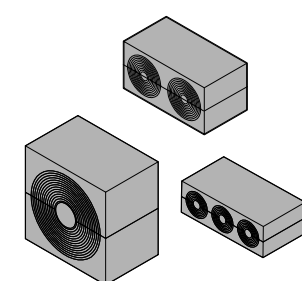


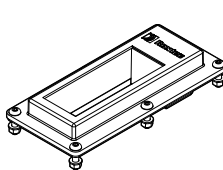
Installation instructions
Roxtec ComSeal™ AISI 316



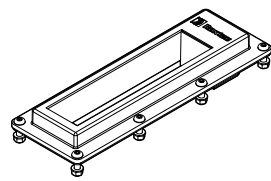
Components



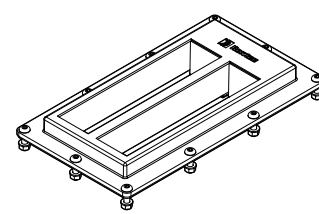
Sealing modules



ComSeal frame 10 AISI 316



ComSeal frame 16 AISI 316



ComSeal frame 32 AISI 316



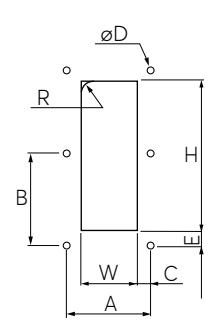
Roxtec Lubricant

Technical data

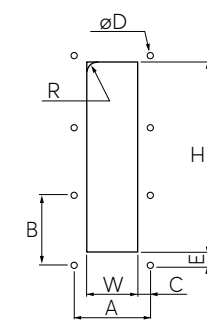
For modules.

Name	External dimensions WxHxD (mm)	For cable/pipe Ø (mm)
CM 15w40	40 x 15 x 30	3.5 – 10.5
CM 20	20 x 20 x 30	4 – 14.5
CM 20w40	40 x 20 x 30	3.5 – 16.5
CM 30	30 x 30 x 30	10 – 25
CM 30w40	40 x 30 x 30	10 – 25
CM 40	40 x 40 x 30	21.5 – 34.5
CM 40 10–32	40 x 40 x 30	9.5 – 32.5

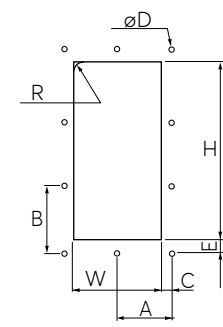
Aperture



ComSeal 10 AISI 316

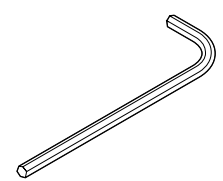


ComSeal 16 AISI 316

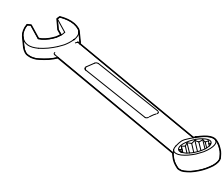


ComSeal 32 AISI 316

Tools



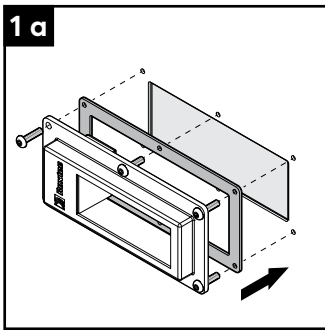
Allen key (not included)



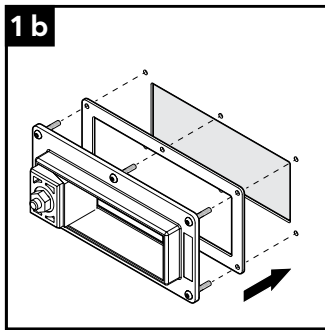
Spanner (not included)

	H	W	R	ØD	A	B	C	E
ComSeal 10	151±1	58.5±1	≤ 4	5.5	68.5±0.5	80.5±0.5	5±1	5±1
ComSeal 16	211±1	58.5±1	≤ 4	5.5	68.5±0.5	73.7±0.5	5±1	5±1
ComSeal 32	213±1	107±1	≤ 4	5.5	61.5±0.5	76.3±0.5	8±1	8±1

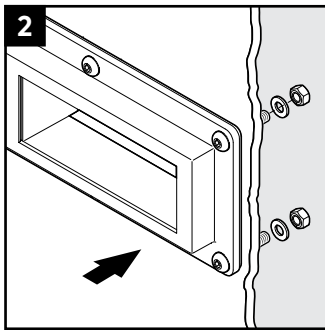
Installation



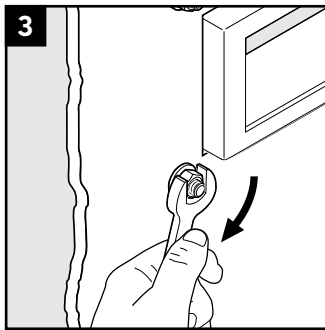
Insert the frame in the opening with gasket side towards the wall/ structure. Use the screws for keeping the gasket in place.



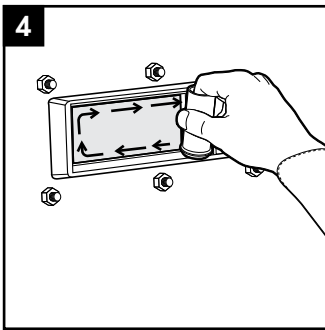
Alternatively, insert the frame with the compression nut facing outwards.



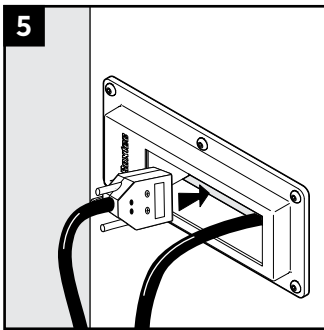
Attach the frame firmly, using the enclosed screws, washers and nuts.



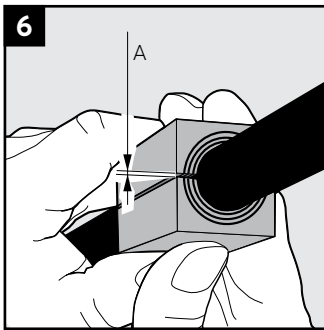
Tighten the nuts firmly, crosswise and in small steps.



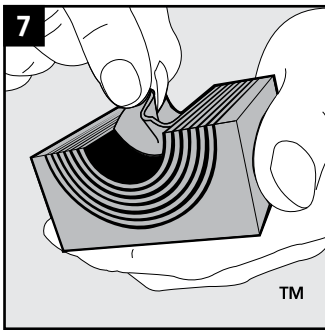
Lubricate the inside surfaces of the frame with Roxtec Lubricant, especially in the corners.



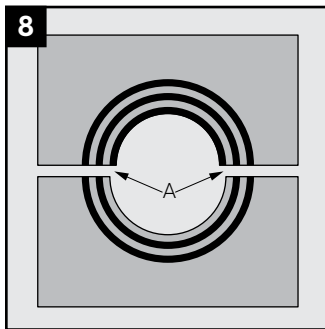
Insert the cables through the frame.



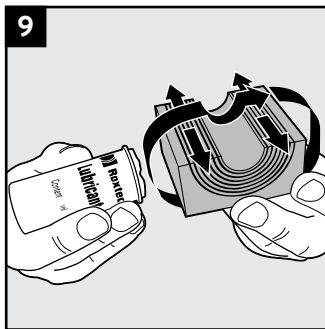
Achieve a 0.1-1.0 mm gap (A) between the two module halves when held against the cable/pipe.



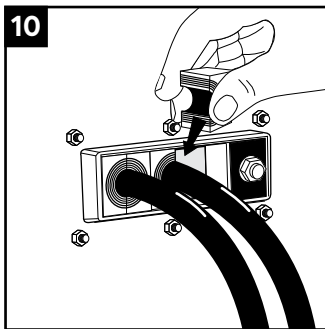
Adapt the modules by peeling off layers.



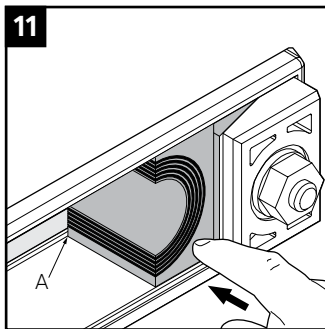
The number of layers may not differ (A) by more than one between the corresponding module halves.



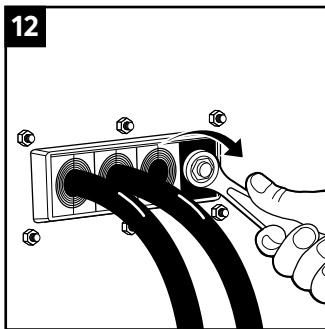
Lubricate all sealing surfaces on the modules.



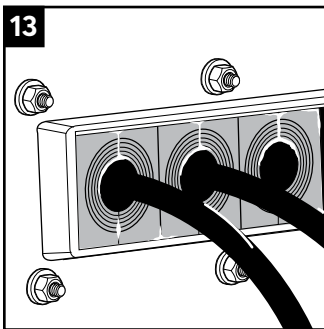
Insert the modules from the same side as the compression nut, according to the packing plan. If possible, start with the largest modules.



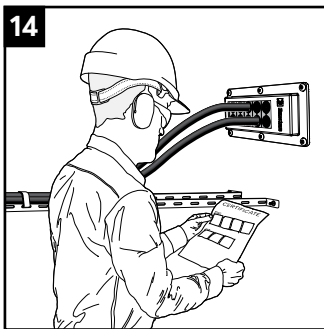
The modules shall rest against the edge (A).



Tighten the nut firmly to max. 10 Nm.

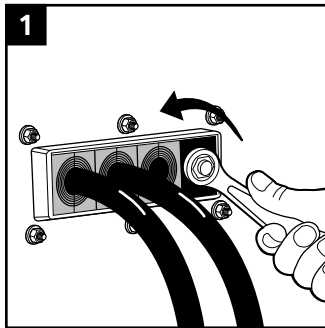


Excess lubricant is a sign of good compression.

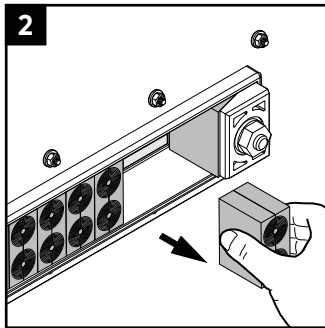


Make a final check! Different approvals or certificates may include amendments or limitations related to this application.

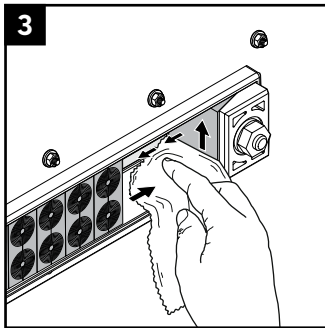
Disassembly and reinstallation



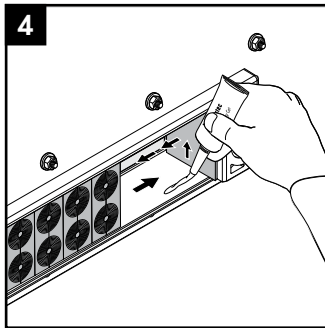
Untighten the nut.



Remove modules needed.



Clean the exposed sealing surfaces.



Lubricate the exposed sealing surfaces. Continue the reinstallation.

Note

- For optimum reliability, wait 24 hours or longer after installation before exposing the cables/pipes to strain or pressure.
- To be used together with CM modules.
- To simplify installation of Roxtec ComSeal™ 32, it is recommended to fill both openings before tightening the compression units.
- Try to route cables perpendicularly through the frame.

Disclaimer

"The Roxtec cable entry sealing system ("the Roxtec system") is a modular-based system of sealing products consisting of different components. Each and every one of the components is necessary for the best performance of the Roxtec system. The Roxtec system has been certified to resist a number of different hazards. Any such certification, and the ability of the Roxtec system to resist such hazards, is dependent on all components that are installed as a part of the Roxtec system. Thus, the certification is not valid and does not apply unless all components installed as part of the Roxtec system are manufactured by or under license from Roxtec ("authorized manufacturer"). Roxtec gives no performance guarantee with respect to the Roxtec system, unless (I) all components installed as part of the Roxtec system are manufactured by an authorized manufacturer and (II) the purchaser is in compliance with (a), and (b), below.

(a) During storage, the Roxtec system or part thereof, shall be kept indoors in its original packaging at room temperature.

(b) Installation shall be carried out in accordance with Roxtec installation instructions in effect from time to time.

The product information provided by Roxtec does not release the purchaser of the Roxtec system, or part thereof, from the obligation to independently determine the suitability of the products for the intended process, installation and/or use.

Roxtec gives no guarantee for the Roxtec system or any part thereof and assumes no liability for any loss or damage whatsoever, whether direct, indirect, consequential, loss of profit or otherwise, occurred or caused by the Roxtec systems or installations containing components not manufactured by an authorized manufacturer and/or occurred or caused by the use of the Roxtec system in a manner or for an application other than for which the Roxtec system was designed or intended.

Roxtec expressly excludes any implied warranties of merchantability and fitness for a particular purpose and all other express or implied representations and warranties provided by statute or common law. User determines suitability of the Roxtec system for intended use and assumes all risk and liability in connection therewith. In no event shall Roxtec be liable for indirect, consequential, punitive, special, exemplary or incidental damages or losses."



Roxtec International AB
Box 540, 371 23 Karlskrona, SWEDEN
+46 455 36 67 00, info@roxtec.com
www.roxtec.com