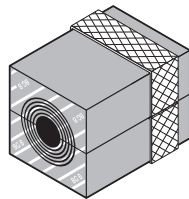


Installation instructions

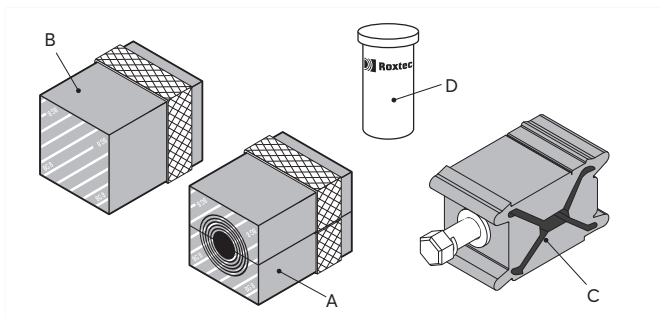
Roxtec CM BG™ B systems



Safety information

Roxtec recommends that all installations are performed without facility operation. Follow national regulations and installation codes. Any action affecting the routed service should be performed according to manufacturer recommendations.

Components



- A: Roxtec CM BG™ B module
B: Roxtec CM BG™ B solid module
C: Compression unit (if applicable)
D: Roxtec Lubricant

Additional information



Scan QR code or visit [roxtec.com](https://www.roxtec.com) for additional information such as drawings, aperture, videos, ratings and certificates.

Tools

- Roxtec installation tools (not included)
- Cable stripper, recommended by the cable manufacturer (not included)
- Continuity tester (not included)
- Spanner (not included)
- Allen key (not included)

Technical data

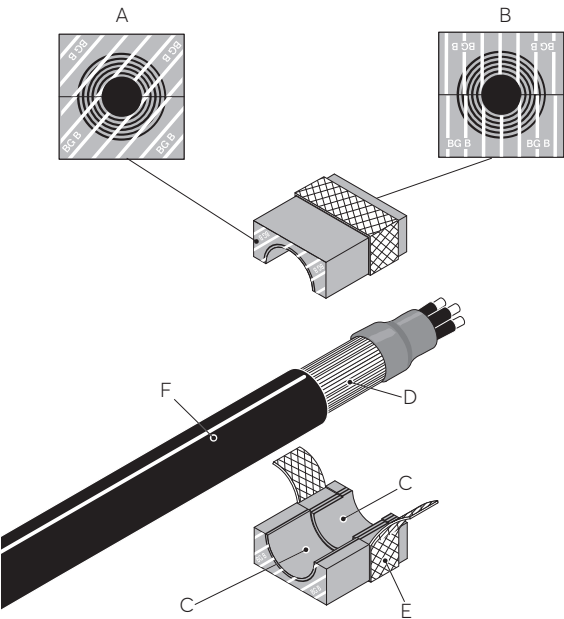
Name	External dimensions WxHxD (mm)	For cable/pipe Ø (mm)	Braid cross-section/cable (mm²)	Approximately equivalent AWG
CM 20 BG B	20 x 20 x 40	4 – 14.5	8	8
CM 20w40 BG B	40 x 20 x 40	3.5 – 16.5	4	11
CM 30w40 BG B	40 x 30 x 40	10 – 25	13	6
CM 40 BG B	40 x 40 x 40	21.5 – 34.5	21	4
CM 40 10–32 BG B	40 x 40 x 40	9.5 – 32.5	21	4
CM 10w40/0 BG B	40 x 10 x 40	0	–	–
CM 20/0 BG B	20 x 20 x 40	0	–	–
CM 40/0 BG B	40 x 40 x 40	0	–	–

The diameter range of the modules indicates the smallest diameter of the exposed cable armor to the largest diameter of the cable jacket. Modules with core can be used as spare parts.

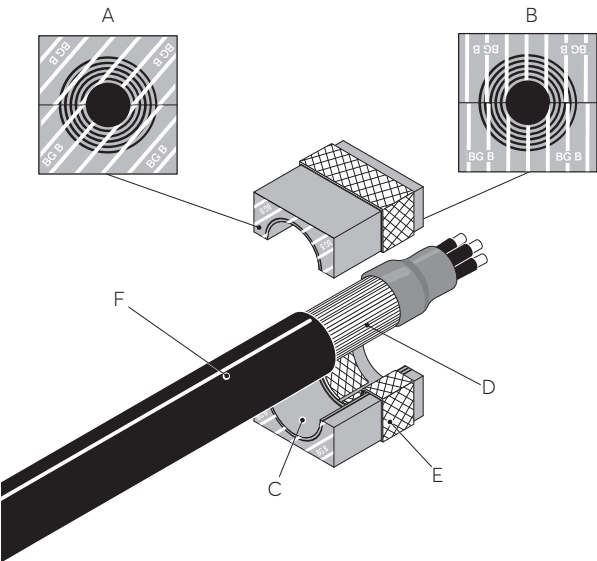
Cable placement in module

- A. Environmental side.
- B. Termination/interior side.
- C. Removable layers.

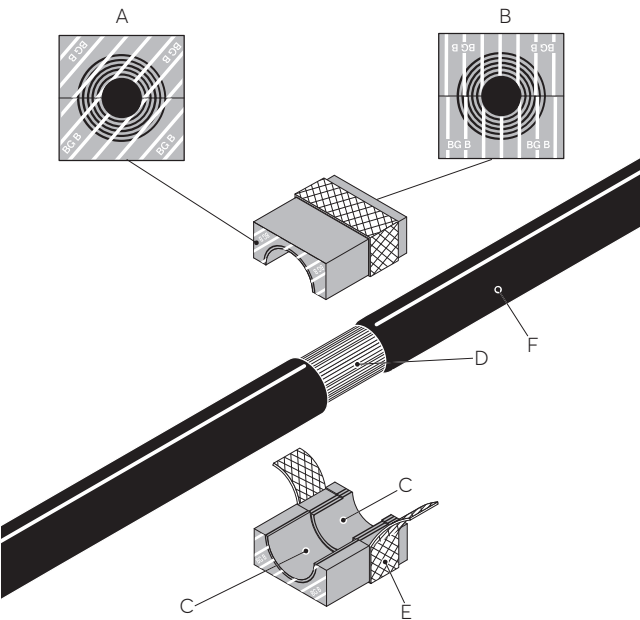
- D. Cable armor.
- E. Bonding/grounding braid.
- F. Cable jacket.



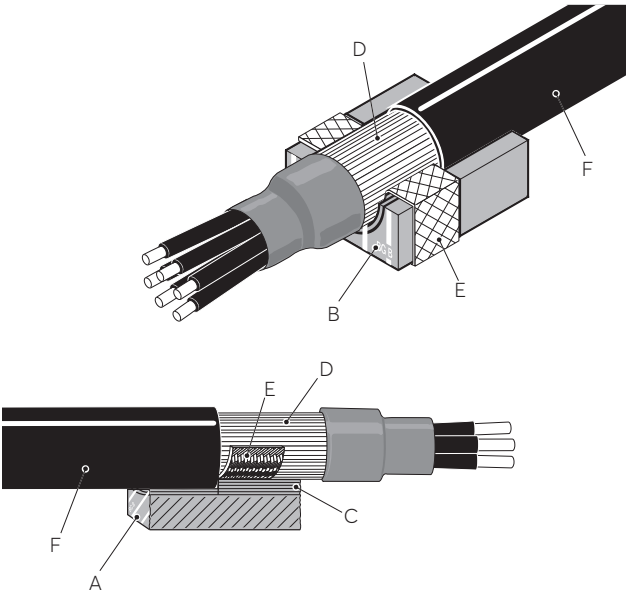
Cable with terminated armor.



The braid is folded in.

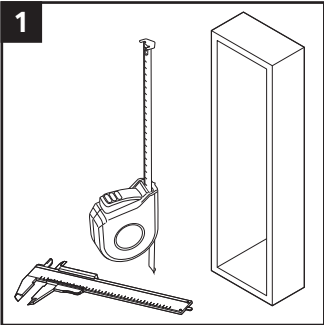


Cable with pass-through armor.

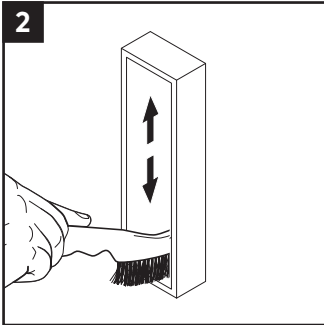


Cable placement in the module half. The cable jacket edge shall be in contact with the edge of the removable layers.

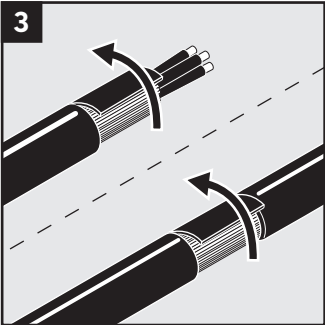
Installation



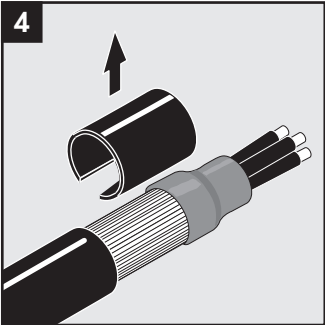
1 Consider your packing space.



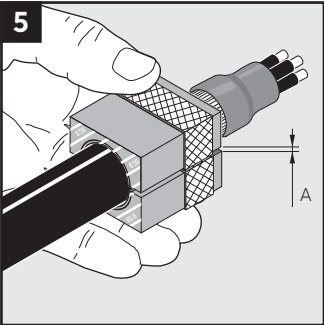
2 Clean the aperture.



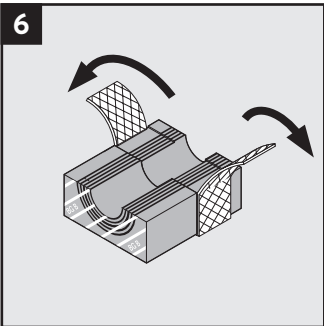
3 Remove the outer jacket and any plastic foil. The cable armor shall be clean and conductive.



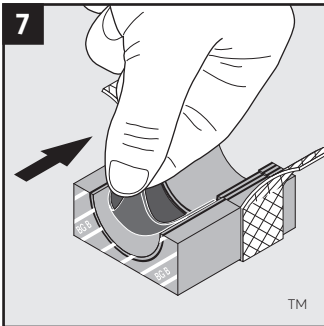
4 Secure the end of the cable armor.



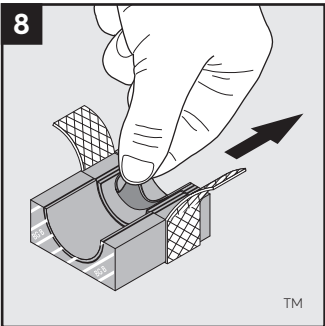
5 Achieve a gap of 0.1-1.0 mm (A) between the module halves by peeling off layers. The cable armor shall be in contact with the braid.



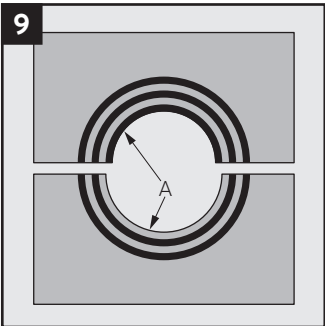
6 Remove the core and fold out the braid. Also see section for modules with multiple openings.



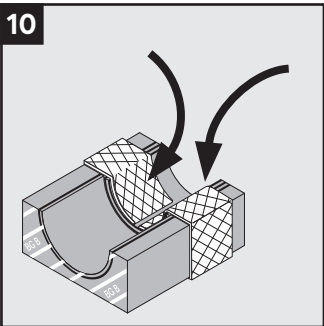
7 Adapt the layers that are in contact with the cable jacket.



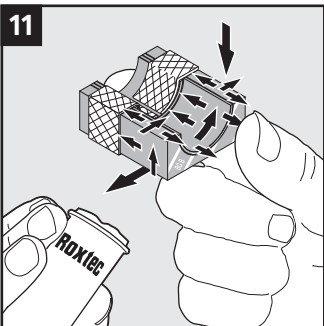
8 Adapt the layers that are in contact with the cable armor.



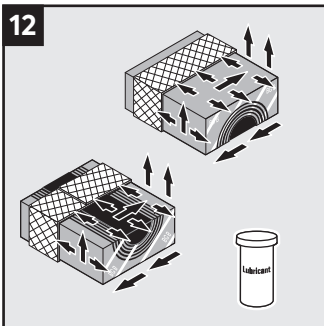
9 The number of layers may not differ (A) by more than one between the corresponding module halves.



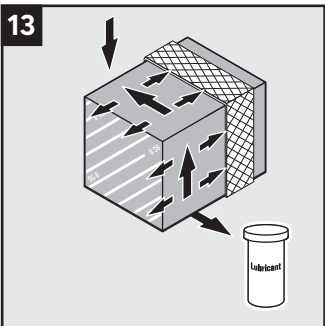
10 Fold the braid tightly inside the module half. Check the gap.



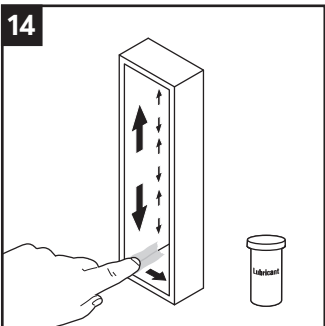
11 Lubricate the sealing surfaces of all modules with Rextec Lubricant. Avoid excess lubricant on the braid.



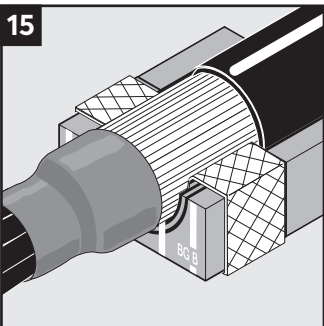
12 Lubricate the sealing surfaces of the spare modules. Do not remove the core.



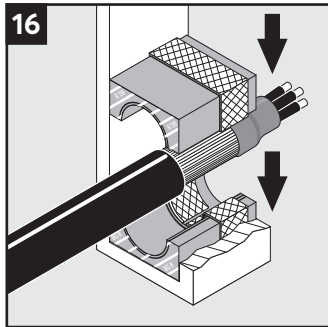
13 Lubricate the sealing surfaces of the solid modules.



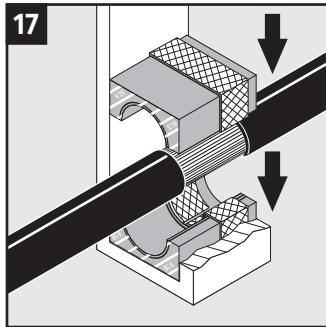
14 Lubricate the inside surfaces of the frame and especially its corners. Lubricate the area that will be in contact with the module braid sparsely.



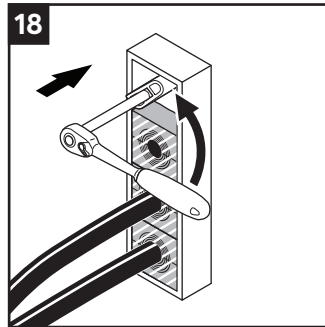
15 When placing cables in modules, the cable armor shall be visible outside the module at the termination side.



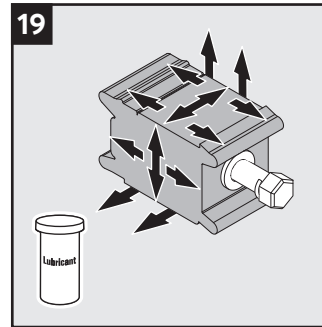
Place cables, according to your packing plan, in the module halves. Place corresponding module halves on top.



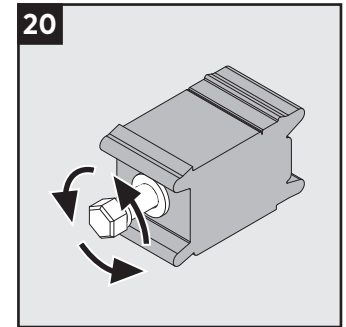
For pass-through cables, cable armor shall be visible on the termination side.



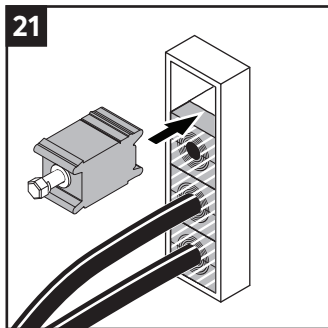
Use a Rextec pre-compression tool to make space for the compression unit, if required.



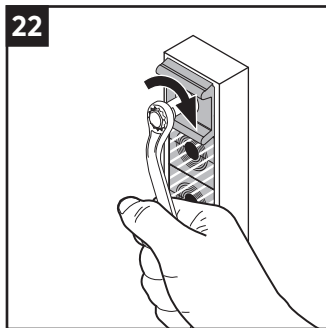
Lubricate the sealing surfaces of the compression unit.



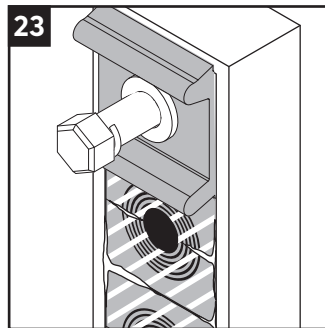
Turn the screw of the compression unit counter clock-wise to full stop before inserting it.



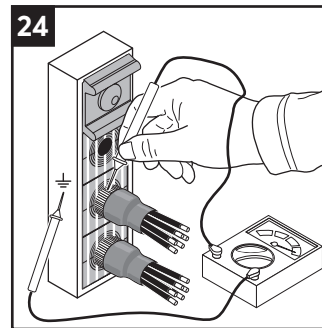
Insert the compression unit, if applicable.



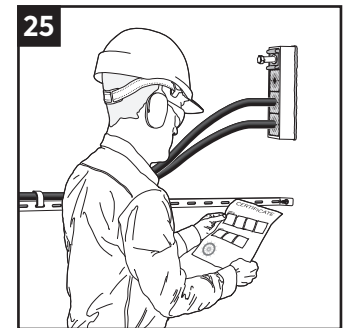
Tighten the screw to full mechanical stop, or recommended torque.



Excess lubricant indicates a tight seal.

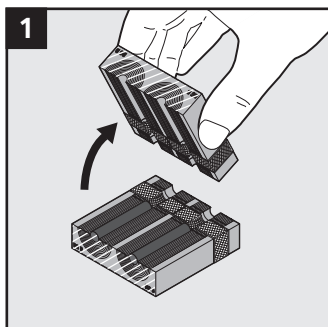


Electrical continuity testing is recommended.

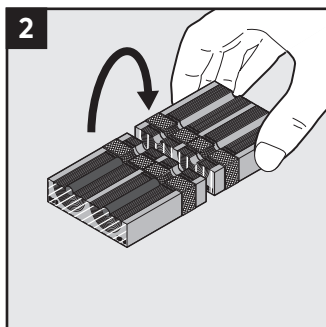


Check additional documentation, if applicable.

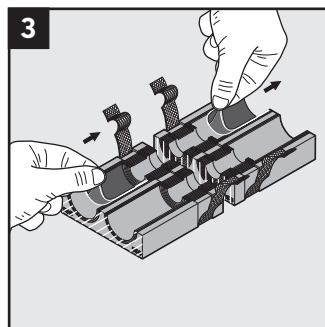
Modules with multiple openings



For modules with multiple openings, take extra care when peeling layers.



Folding the halves like this will line up corresponding openings.



Adapt one opening at a time by removing layers.

Note

- Integrated environmental sealing system for bonding and grounding applications. For use with armored/shielded cables or pipes.
- For non-armored/shielded cables, the cable jacket is not removed. No bonding/grounding functionality will be achieved for the cable.
- For optimum reliability, wait 24 hours or longer after installation before exposing the cables or pipes to strain or pressure.
- Suggestions for cable preparations are available on www.roxtec.com.
- Cables shall go straight through the frame.
- To be used with: Roxtec CM BG B modules.
- To simplify installation in frames with more than one opening, fill all openings before tightening the compression units.
- The final complete bonding/grounding installation has to comply with applicable codes and regulations.
- Approvals or certificates may include amendments or limitations related to this application.
- The latest version of this and related documents are found at roxtec.com.

After installation inspection

- Is there visible protruding lubricant?
- Is the combined height of modules correct according to the frame packing height?

Disclaimer

"The Roxtec cable and pipe entry sealing system ('the Roxtec system') is a modular-based system of sealing products consisting of different components. Each and every one of the components is necessary for the best performance of the Roxtec system. The Roxtec system has been certified to resist a number of different hazards. Any such certification, and the ability of the Roxtec system to resist such hazards, is dependent on all components that are installed as a part of the Roxtec system. Thus, the certification is not valid and does not apply unless all components installed as part of the Roxtec system are manufactured by or under license from Roxtec ('authorized manufacturer'). Roxtec gives no performance guarantee with respect to the Roxtec system, unless (i) all components installed as part of the Roxtec system are manufactured by an authorized manufacturer and (ii) the purchaser is in compliance with (a), and (b), below.

(a) During storage, the Roxtec system or part thereof, shall be kept indoors in its original packaging at room temperature.

(b) Installation shall be carried out in accordance with Roxtec installation instructions in effect from time to time.

The product information provided by Roxtec does not release the purchaser of the Roxtec system, or part thereof, from the obligation to independently

determine the suitability of the products for the intended process, installation and/or use.

Roxtec gives no guarantee for the Roxtec system or any part thereof and assumes no liability for any loss or damage whatsoever, whether direct, indirect, consequential, loss of profit or otherwise, occurred or caused by the Roxtec systems or installations containing components not manufactured by an authorized manufacturer and/or occurred or caused by the use of the Roxtec system in a manner or for an application other than for which the Roxtec system was designed or intended.

Roxtec expressly excludes any implied warranties of merchantability and fitness for a particular purpose and all other express or implied representations and warranties provided by statute or common law. User determines suitability of the Roxtec system for intended use and assumes all risk and liability in connection therewith. In no event shall Roxtec be liable for indirect, consequential, punitive, special, exemplary or incidental damages or losses.

The Roxtec products are offered and sold in accordance with the conditions of the Roxtec General Terms of Sales. The latest version of the Roxtec General Terms of Sales can be found and downloaded from roxtec.com/general-terms-of-sales.



Roxtec International AB
Box 540, 371 23 Karlskrona, SWEDEN
+46 455 36 67 00, info@roxtec.com
www.roxtec.com