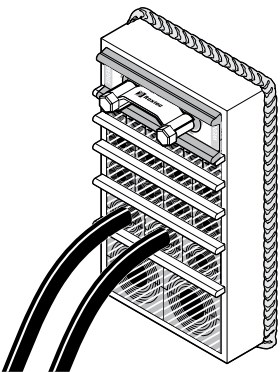


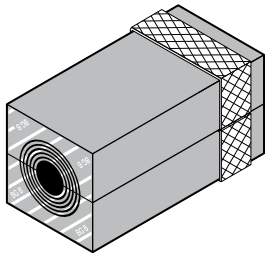
Installation instructions

Roxtec RM BG™ B systems

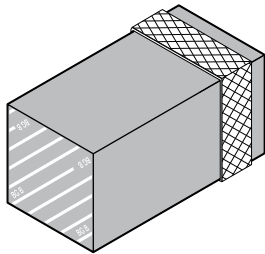


Safety information
Roxtec recommends that all installations are performed without facility operation. Follow national regulations and installation codes. Any action affecting the routed service should be performed according to manufacturer recommendations.

Components



Roxtec RM BG B module

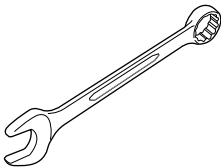


Roxtec RM BG B solid module

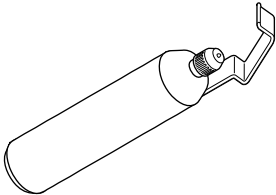


Roxtec Lubricant

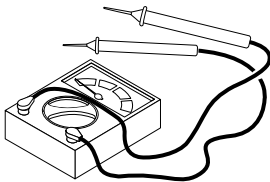
Tools



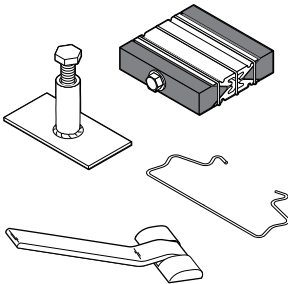
13 mm spanner
(not included)



Cable stripper tool.
Recommended by the cable
manufacturer
(not included)



Continuity tester
(not included)



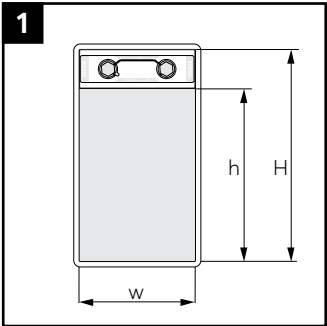
Roxtec tools
(not included)

Technical data

Name	External dimensions WxHxD (mm)	For cable/pipe Ø (mm)	Braid cross-section/ cable (mm²)	Approximately equivalent AWG
RM 20 BG B	20 x 20 x 60	4 – 14.5	8	8
RM 20w40 BG B	40 x 20 x 60	3.5 – 16.5	4	11
RM 30 BG B	30 x 30 x 60	10 – 25	13	6
RM 30H90 BG B	30 x 90 x 60	10 – 25	21	4
RM 40 BG B	40 x 40 x 60	21.5 – 34.5	21	4
RM 40 10–32 BG B	40 x 40 x 60	9.5 – 32.5	21	4
RM 40H80 BG B	40 x 80 x 60	21.5 – 34.5	42	1
RM 60 BG B	60 x 60 x 60	28 – 54	42	1
RM 60 24–54 BG B	60 x 60 x 60	24 – 54	42	1
RM 80 BG B	80 x 80 x 60	48 – 71	42	1
RM 90 BG B	90 x 90 x 60	48 – 71	42	1
RM 120 BG B	120 x 120 x 60	67.5 – 99	42	1
RM 10w120/0 BG B	120 x 10 x 60	0	–	–
RM 20/0 BG B	20 x 20 x 60	0	–	–
RM 30/0 BG B	30 x 30 x 60	0	–	–
RM 30H90/0 BG B	30 x 90 x 60	0	–	–
RM 40/0 BG B	40 x 40 x 60	0	–	–
RM 40H80/0 BG B	40 x 80 x 60	0	–	–
RM 60/0 BG B	60 x 60 x 60	0	–	–

The diameter range of the modules indicates the smallest diameter of the exposed cable armor to the largest diameter of the cable jacket. Modules with core are spare capacity.

Packing space



S	H	w	h
1	101	60	60
2	101	120	60
3	160	60	120
4	160	120	120
5	218	60	180
6	218	120	180
7	278	60	240
8	278	120	240

Measure your frame height (H) and check the corresponding packing height (h) in the table. Consider your packing height when inserting the modules.

Cable placement in module

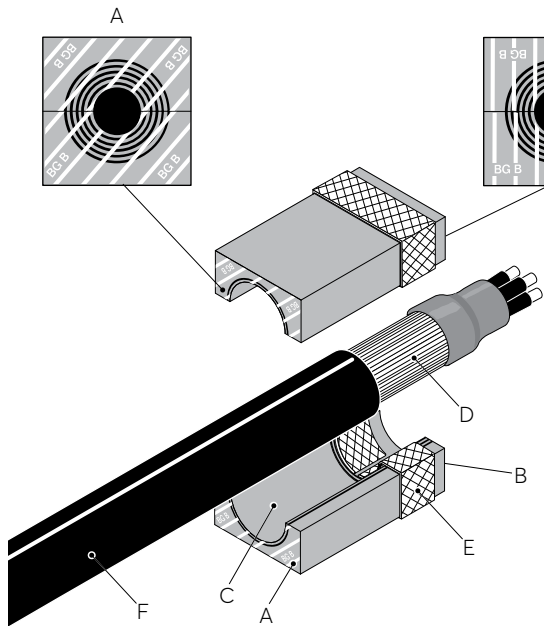
- A: Environmental side

B: Termination/interior side

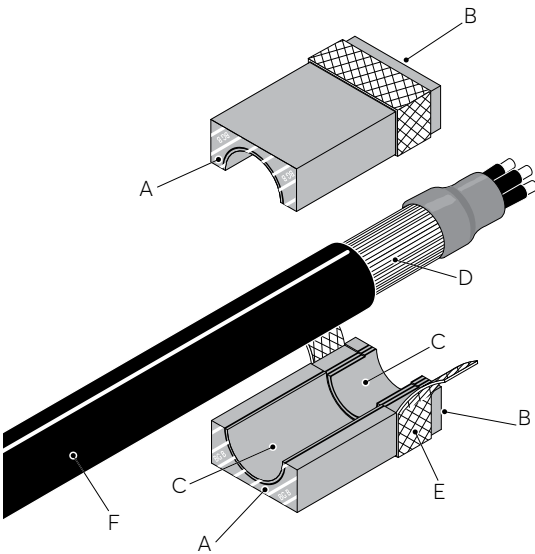
C: Removable layers
- D: Cable armor

E: Module braid

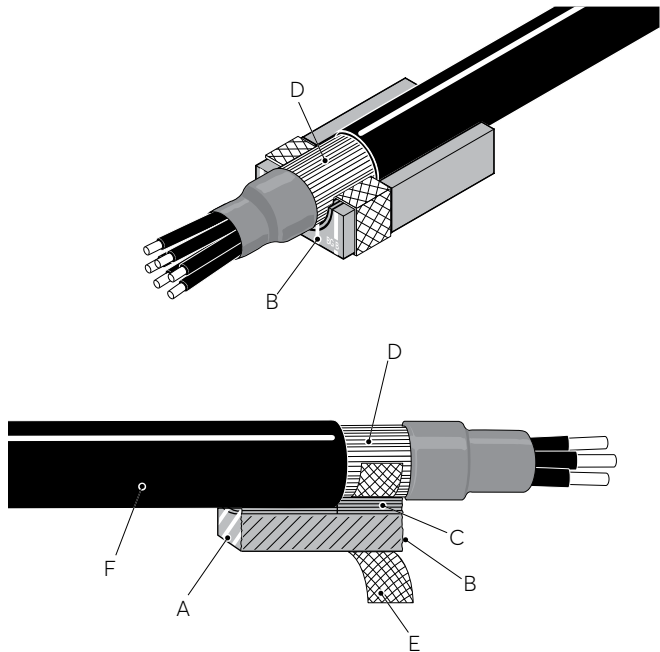
F: Cable jacket



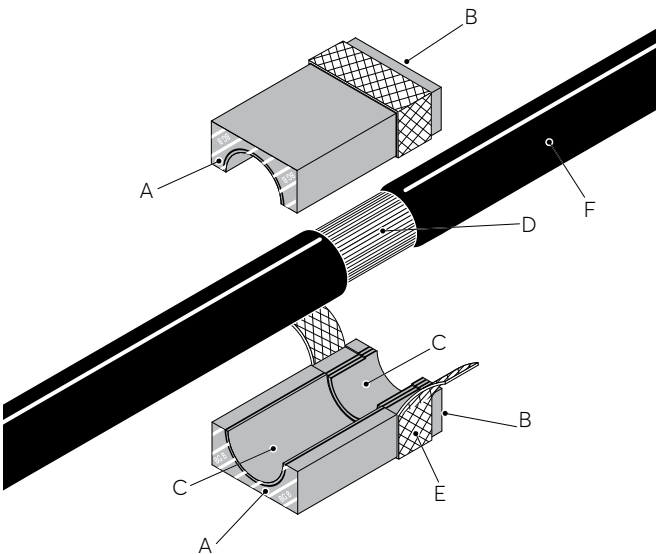
The braid is folded in



Cable with terminated armor.

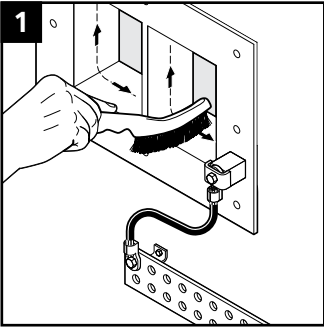


Cable placement in the module half. The cable jacket edge shall be in contact with the edge of the removable layers.

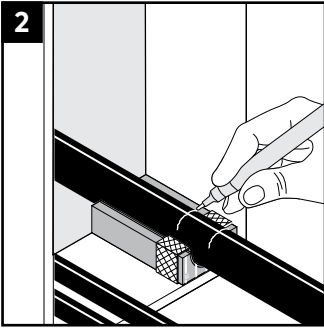


Cable with pass through armor.

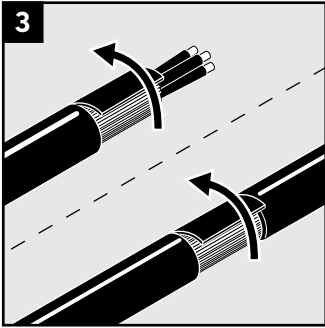
Installation



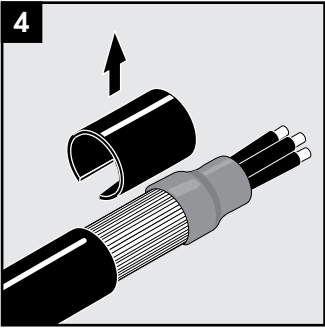
1 Clean the frame. Ensure continuous electrical contact with protective earth. National regulations apply.



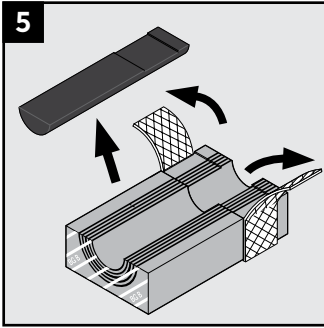
2 Hold the cable in its final position. Use a module half to mark where the cable jacket is to be removed.



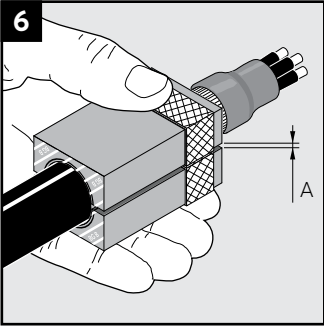
3 Remove the outer jacket and any plastic foil. The cable armor shall be clean and conductive.



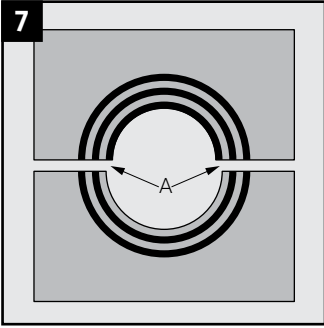
4 Secure the end of the cable armor. Suggestions for cable preparations, visit roxtec.com.



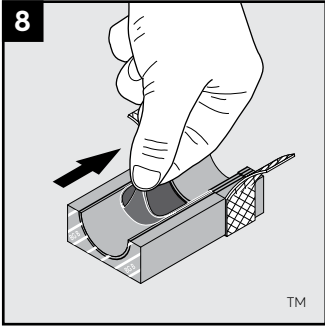
5 Remove the cores and fold out the braid on all modules except spares.



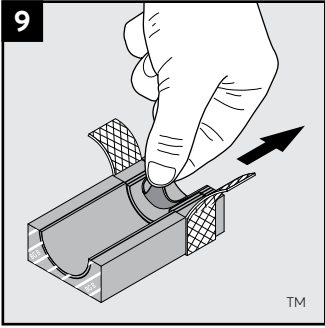
6 Achieve a gap of 0.1-1.0 mm (A) between the module halves by peeling off layers. The cable armor shall be in contact with the braid.



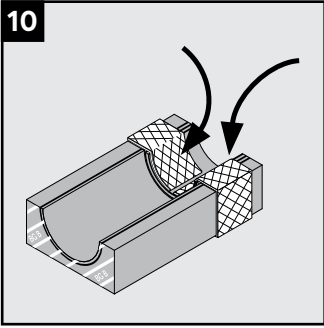
7 The number of layers between the corresponding module halves may not differ (A) by more than one layer.



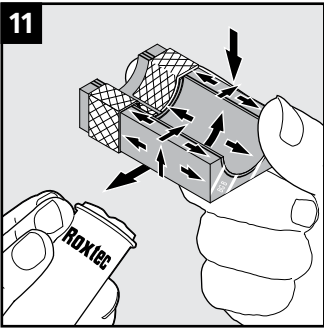
8 Adapt the layers that are in contact with the cable jacket.



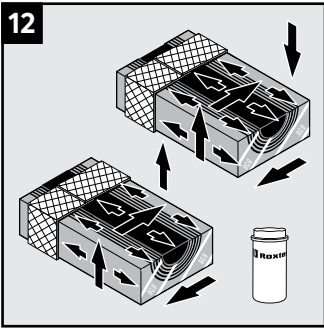
9 Adapt the layers that are in contact with the cable armor.



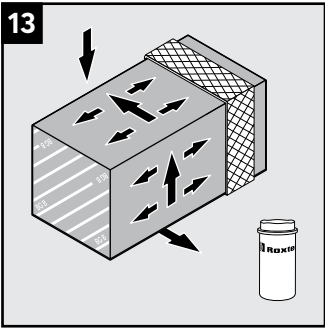
10 Fold the braid tightly inside the module half.



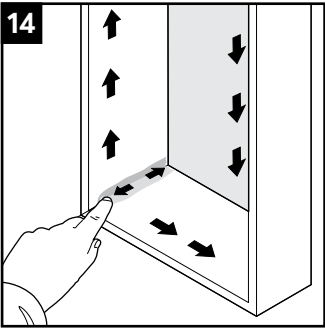
11 Lubricate the sealing surfaces of all modules. Avoid excess lubricant on the braid.



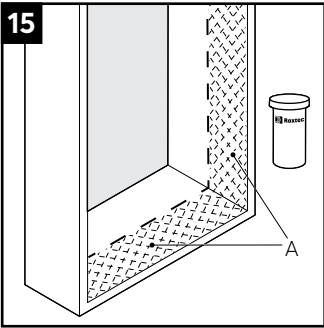
12 Lubricate the sealing surfaces of the spare modules. Do not remove the core.



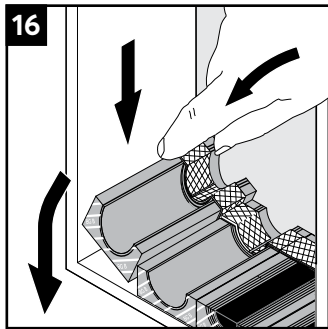
13 Lubricate the sealing surfaces of the solid modules.



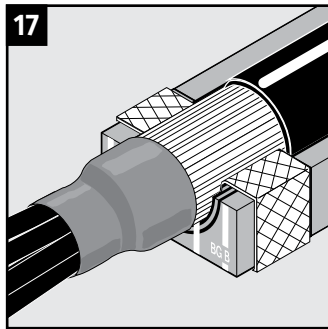
14 Lubricate the inside surfaces of the frame and especially its corners.



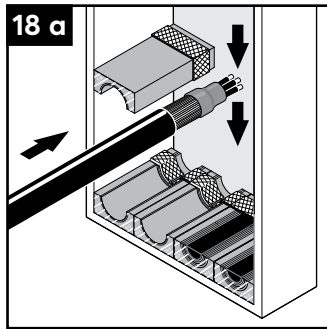
15 Lubricate the area (A) that will be in contact with the braid sparsely.



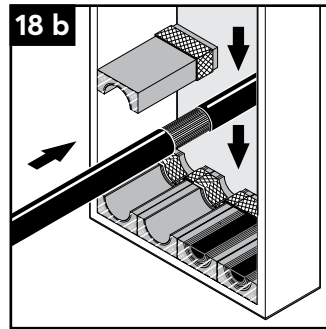
Place modules according to your packing plan.



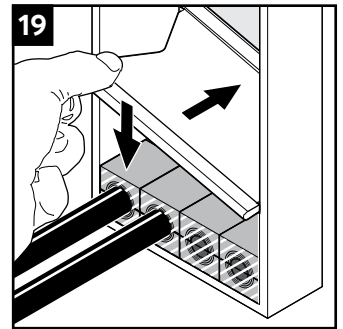
The cable armor shall be visible outside the module at the termination side.



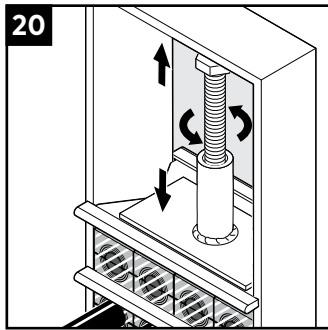
Place cables and the corresponding module halves on top.



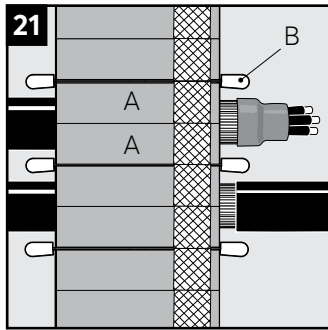
For pass-through cables, cable armor shall be visible on the termination side.



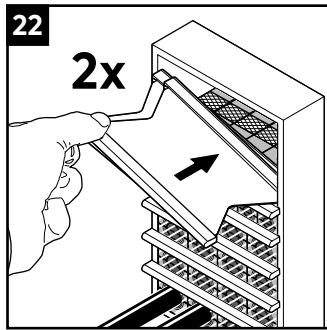
Insert a stayplate on top of every finished row of modules.



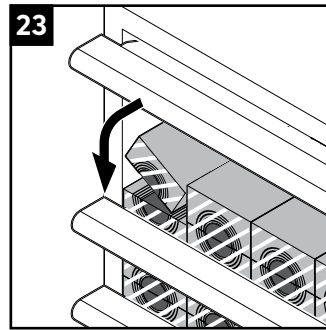
To simplify installation, the use of a pre-compression tool is recommended.



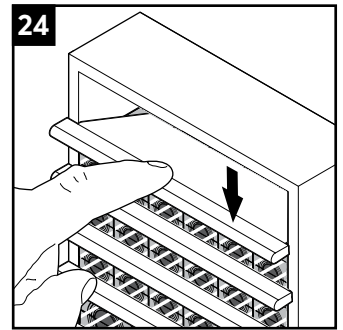
Ensure that the modules (A) are secured within the stayplate (B) edges.



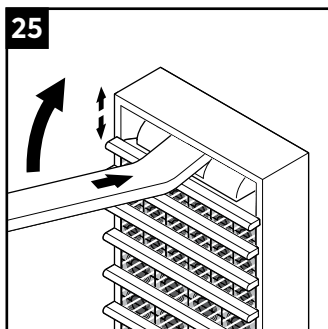
Before inserting the final row of modules, insert two stayplates.



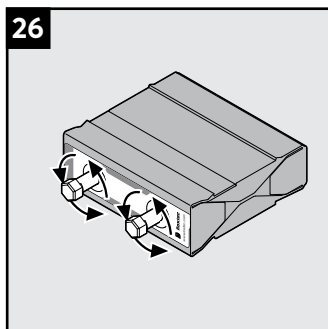
Separate the two stayplates and insert the final row of modules between the stayplates.



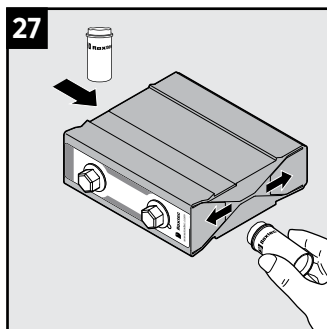
Place the upper stayplate on top of the modules.



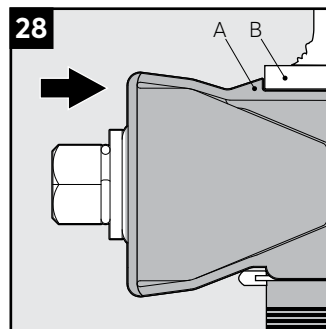
The use of a pre-compression tool is recommended.



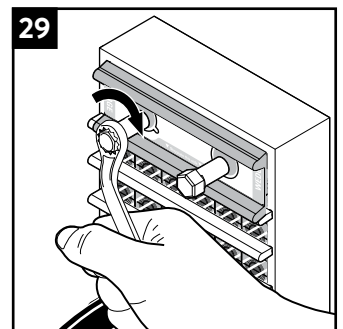
Turn the screws of the wedge counter clock-wise to full stop before inserting it.



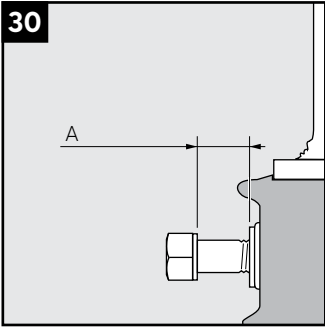
Lubricate the marked areas of the wedge.



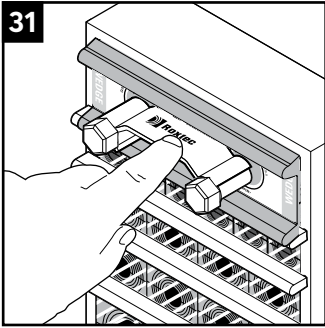
Insert the wedge so the stop flange (A) is in contact with the frame (B).



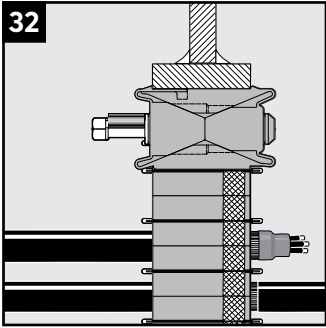
Tighten the screws alternately until full mechanical stop, max 20 Nm.



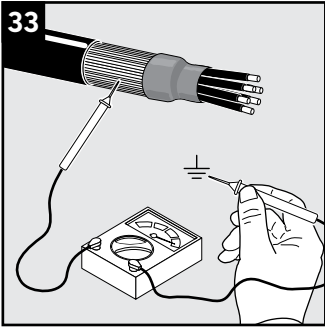
25 mm (A) of the screws shall be exposed.



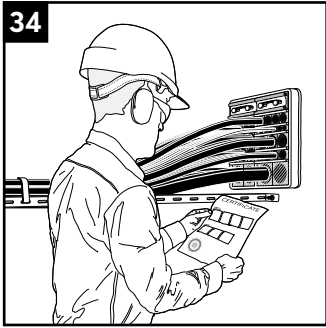
Attach the wedge clip to the wedge screws to complete the installation.



Completed installation.

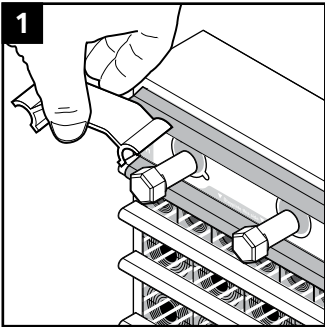


Electrical continuity testing is recommended.

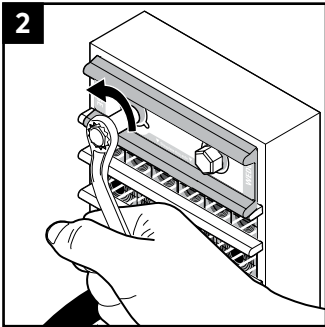


Check additional documentation, if applicable.

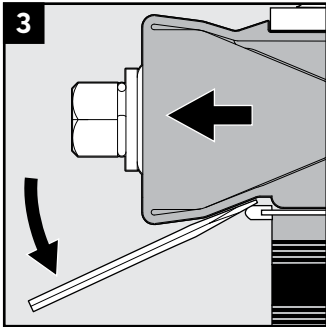
Disassembly



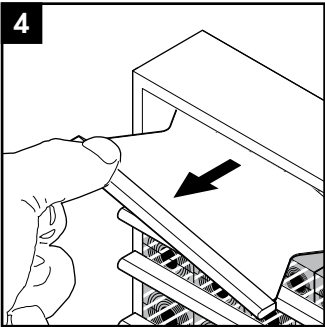
Remove the wedge clip from the wedge.



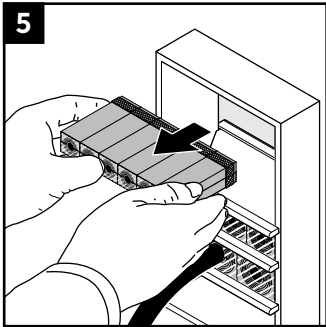
Loosen the screws alternately to full stop. Do not exceed 20 Nm.



Lift the wedge over the stop flange. Roxtec tools are available.

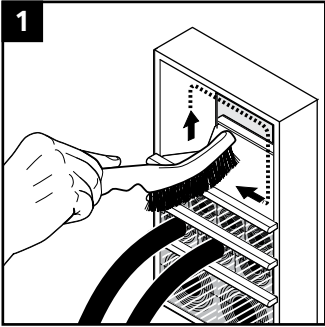


Remove modules and stayplates.

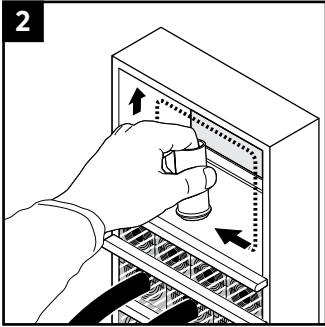


Keep the rows sorted. If a module is damaged or replaced, all modules in that row must be replaced.

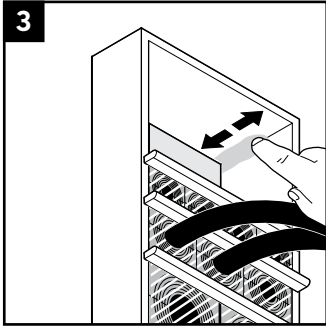
Reinstallation



The inside surfaces of the exposed packing space shall be clean and conductive.



Lubricate the inside surfaces. Lubricate the area that will be in contact with the braid sparsely.



Lubricate all corners carefully. Continue the reinstallation.

Note

- Integrated environmental sealing system for bonding and grounding applications. For use with armored cables.
- To be used with Roxtec RM BG B modules.
- An incorrectly adapted module shall be replaced (layers shall not be reused).
- For optimum reliability, wait 24 hours or longer after installation before exposing the cables or pipes to strain or pressure.
- Corrosion preventing primer must be removed to achieve electrical conductivity, where applicable.
- Cables shall go straight through the frame.
- Cable/pipe with a considerable weight needs to be supported.
- Partially installed openings shall be compressed if left unattended.
- Approvals or certificates may include amendments or limitations related to this application.
- The latest version of this and related documents are found at roxtec.com.

Disclaimer

"The Roxtec cable and pipe entry sealing system ('the Roxtec system') is a modular-based system of sealing products consisting of different components. Each and every one of the components is necessary for the best performance of the Roxtec system. The Roxtec system has been certified to resist a number of different hazards. Any such certification, and the ability of the Roxtec system to resist such hazards, is dependent on all components that are installed as a part of the Roxtec system. Thus, the certification is not valid and does not apply unless all components installed as part of the Roxtec system are manufactured by or under license from Roxtec ('authorized manufacturer'). Roxtec gives no performance guarantee with respect to the Roxtec system, unless (I) all components installed as part of the Roxtec system are manufactured by an authorized manufacturer and (II) the purchaser is in compliance with (a), and (b), below.

(a) During storage, the Roxtec system or part thereof, shall be kept indoors in its original packaging at room temperature.

(b) Installation shall be carried out in accordance with Roxtec installation instructions in effect from time to time.

The product information provided by Roxtec does not release the purchaser of the Roxtec system, or part thereof, from the obligation to independently

determine the suitability of the products for the intended process, installation and/or use.

Roxtec gives no guarantee for the Roxtec system or any part thereof and assumes no liability for any loss or damage whatsoever, whether direct, indirect, consequential, loss of profit or otherwise, occurred or caused by the Roxtec systems or installations containing components not manufactured by an authorized manufacturer and/or occurred or caused by the use of the Roxtec system in a manner or for an application other than for which the Roxtec system was designed or intended.

Roxtec expressly excludes any implied warranties of merchantability and fitness for a particular purpose and all other express or implied representations and warranties provided by statute or common law. User determines suitability of the Roxtec system for intended use and assumes all risk and liability in connection therewith. In no event shall Roxtec be liable for indirect, consequential, punitive, special, exemplary or incidental damages or losses. The Roxtec products are offered and sold in accordance with the conditions of the Roxtec General Terms of Sales. The latest version of the Roxtec General Terms of Sales can be found and downloaded from roxtec.com/general-terms-of-sales."



Roxtec International AB
Box 540, 371 23 Karlskrona, SWEDEN
+46 455 36 67 00, info@roxtec.com
www.roxtec.com