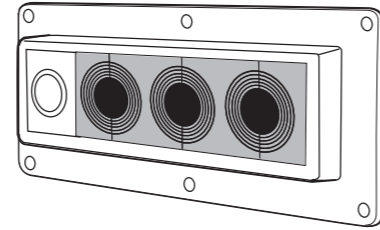
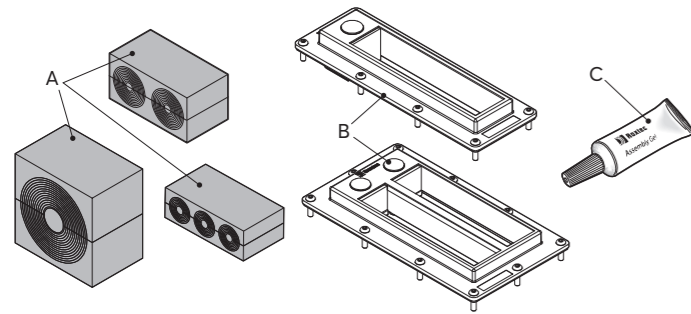


# Installation instructions

## Roxtec ComSeal™



### Components



- A. Sealing modules
- B. ComSeal frames
- C. Roxtec Assembly Gel

### Technical data

For modules.

Name	Aperture dimensions WxH (mm)	Packing space (mm)
COMSEAL 10	56(+1/-1) x 149(+1/-1)	40 x 100
COMSEAL 12	56(+1/-1) x 169(+1/-1)	40 x 120
COMSEAL 15	61(+1/-1) x 195(+1/-1)	50 x 150
COMSEAL 16	56(+1/-1) x 209(+1/-1)	40 x 160
COMSEAL 30	120(+1/-1) x 195(+1/-1)	50 x 150
COMSEAL 32	103(+1/-1) x 209(+1/-1)	40 x 160

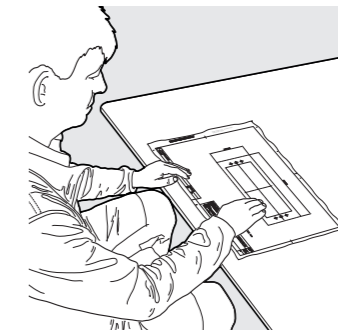
### Tools

- Allen key size 3 (not included)
- Spanner size 13 (not included)

### Note

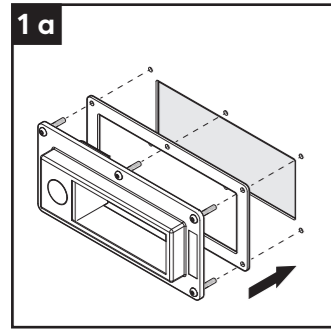
- For optimum reliability, wait 24 hours or longer after installation before exposing the cables/pipes to strain or pressure.
- To be used together with CM modules.
- To simplify installation of Roxtec ComSeal™ 30 and 32, it is recommended to fill both openings before tightening the compression units.
- Cables shall go straight through the frame.
- For Roxtec ComSeal™ 12, a standard FL 21 aperture can be used.
- Cores or cables/pipes must be present in all modules.
- A module with core is spare capacity.
- An incorrectly adapted module shall be replaced (layers shall not be reused).
- Cable/pipe with a considerable weight needs to be supported to prevent damage or subsidence to the Roxtec system.
- Always use the lubricant supplied with this product.
- Approvals or certificates may include amendments or limitations related to this application.
- The latest version of this and related documents are found at roxtec.com.

### Additional information

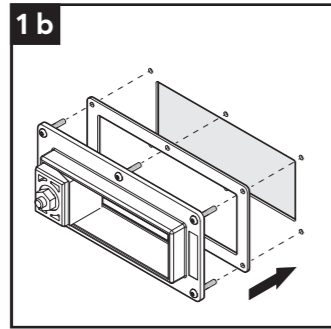


Scan QR code or visit [roxtec.com](http://roxtec.com) for additional information such as drawings, aperture, videos, ratings and certificates.

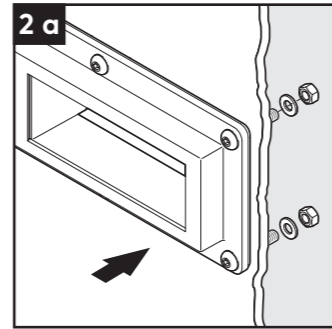
## Installation



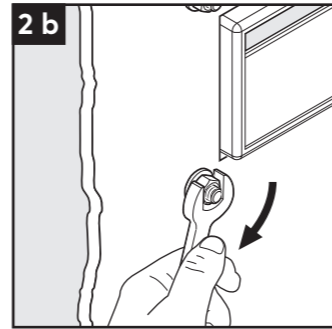
Insert the frame into the aperture. Place the gasket between the frame and the structure.



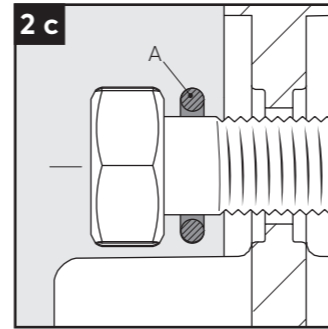
Alternatively, insert the frame with the compression nut facing outwards.



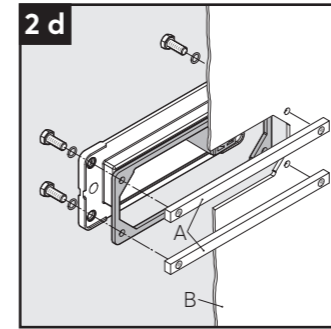
Attach the frame using the enclosed fasteners.



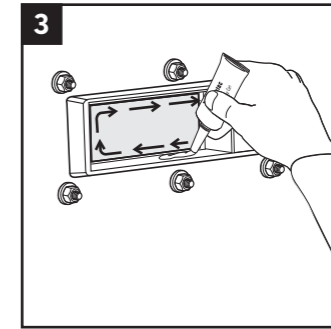
Tighten the nuts crosswise in small steps. Recommended torque 4 Nm.



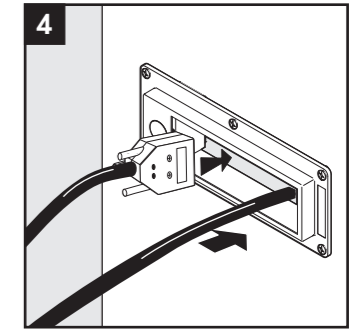
For ComSeal 12, the O-ring (A) shall be mounted under the bolt head.



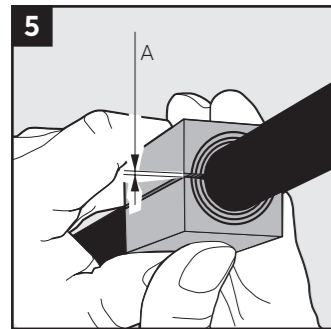
For ComSeal 12, counter frames with art. no. 2CV0001020219 (A) shall be used if the structure (B) is thinner than 2 mm.



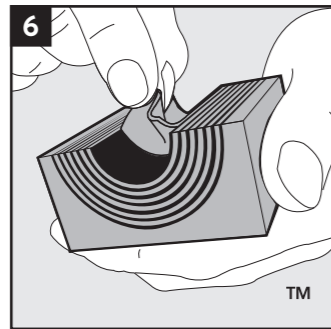
Lubricate the sealing surfaces of the frame with Roxtec Assembly Gel, especially in the corners.



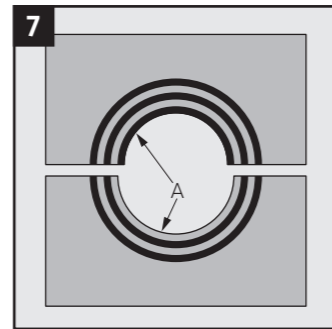
Insert the cables straight through the frame.



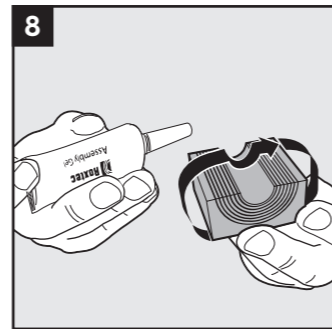
Achieve a 0.1-1.0 mm gap (A) between the two module halves when held against the cable/pipe.



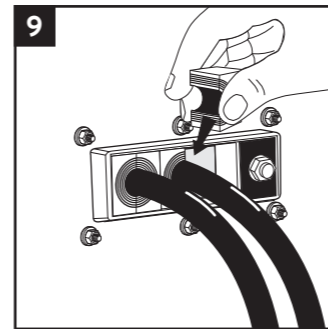
Adapt the modules by peeling off layers.



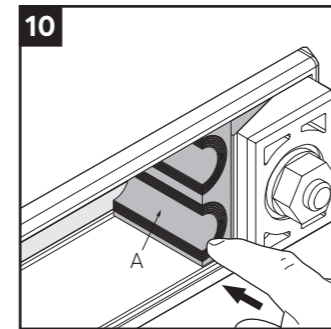
The number of layers may not differ (A) by more than one between the corresponding module halves.



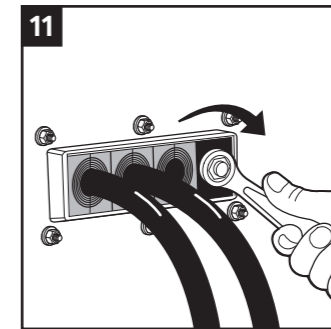
Lubricate all sealing surfaces on the modules.



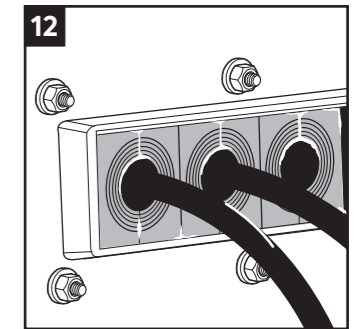
Insert the modules from the same side as the compression nut, according to the packing plan. If possible, start with the largest modules.



The modules shall rest against the edge (A).

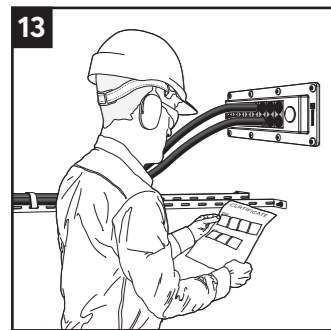


Tighten the nut firmly to max. 10 Nm.

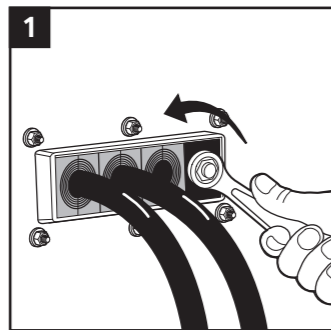


Excess assembly gel is a sign of good compression.

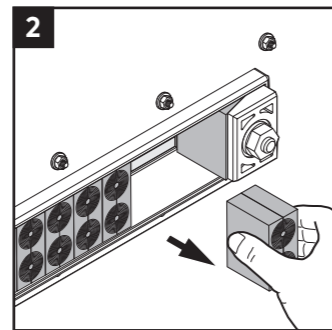
## Disassembly and reinstallation



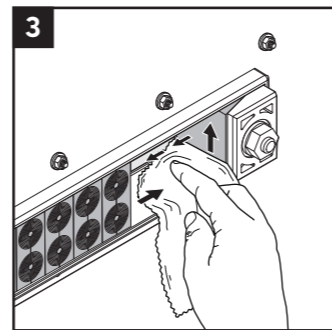
Check additional documentation, if applicable.



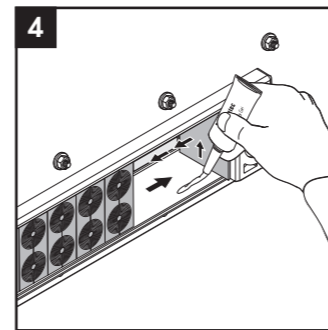
Untighten the nut.



Remove the modules needed.



Clean the exposed sealing surfaces.



Lubricate the exposed sealing surfaces. Continue the reinstallation.

## After installation inspection

- Is there visible protruding assembly gel?
- Is the combined height of modules correct according to the frame packing height?
- Make sure that all modules are placed correctly and fully inserted after compression.

### Disclaimer

"The Roxtec cable and pipe entry sealing system ('the Roxtec system') is a modular-based system of sealing products consisting of different components. Each and every one of the components is necessary for the best performance of the Roxtec system. The Roxtec system has been certified to resist a number of different hazards. Any such certification, and the ability of the Roxtec system to resist such hazards, is dependent on all components that are installed as a part of the Roxtec system. Thus, the certification is not valid and does not apply unless all components installed as part of the Roxtec system are manufactured by or under license from Roxtec ('authorized manufacturer'). Roxtec gives no performance guarantee with respect to the Roxtec system, unless (I) all components installed as part of the Roxtec system are manufactured by an authorized manufacturer and (II) the purchaser is in compliance with (a), and (b), below.

(a) During storage, the Roxtec system or part thereof, shall be kept indoors in its original packaging at room temperature.  
(b) Installation shall be carried out in accordance with Roxtec installation instructions in effect from time to time.  
The product information provided by Roxtec does not release the purchaser of the Roxtec system, or part thereof, from the obligation to independently

determine the suitability of the products for the intended process, installation and/or use.

Roxtec gives no guarantee for the Roxtec system or any part thereof and assumes no liability for any loss or damage whatsoever, whether direct, indirect, consequential, loss of profit or otherwise, occurred or caused by the Roxtec systems or installations containing components not manufactured by an authorized manufacturer and/or occurred or caused by the use of the Roxtec system in a manner or for an application other than for which the Roxtec system was designed or intended.

Roxtec expressly excludes any implied warranties of merchantability and fitness for a particular purpose and all other express or implied representations and warranties provided by statute or common law. User determines suitability of the Roxtec system for intended use and assumes all risk and liability in connection therewith. In no event shall Roxtec be liable for indirect, consequential, punitive, special, exemplary or incidental damages or losses. The Roxtec products are offered and sold in accordance with the conditions of the Roxtec General Terms of Sales. The latest version of the Roxtec General Terms of Sales can be found and downloaded from [roxtec.com/general-terms-of-sales](http://roxtec.com/general-terms-of-sales).



Roxtec International AB  
Box 540, 371 23 Karlskrona, SWEDEN  
+46 455 36 67 00, [info@roxtec.com](mailto:info@roxtec.com)  
[www.roxtec.com](http://www.roxtec.com)