

Fig 1:  
RS Seal

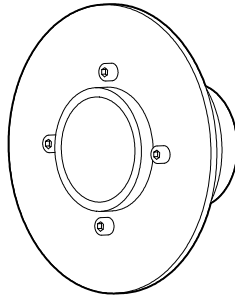
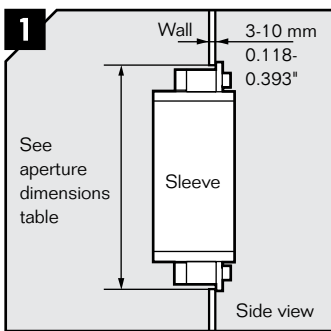


Fig 2:  
Sleeve

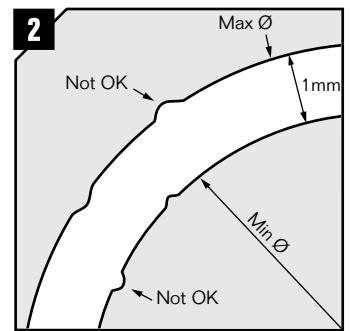
## Sleeve installation



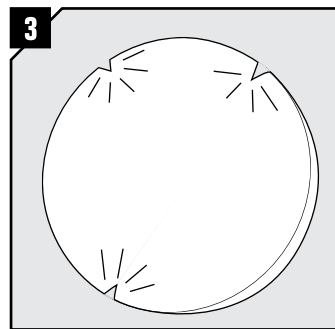
Make a hole for the sleeve.

## Aperture dimensions

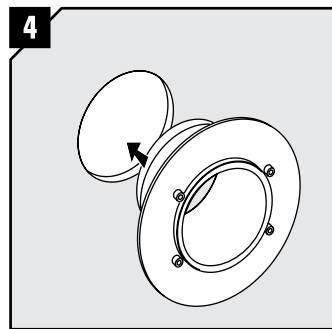
Type:	Min diameter $\varnothing$ (mm) (Max +2 mm)	$\varnothing$ (in)
RS X 43	82	3.228
RS X 50	90	3.543
RS X 75	115	4.528
RS X 100	145	5.709
RS X 125	170	6.693
RS X 150	199	7.835



Aperture irregularities are acceptable within min and max diameters.



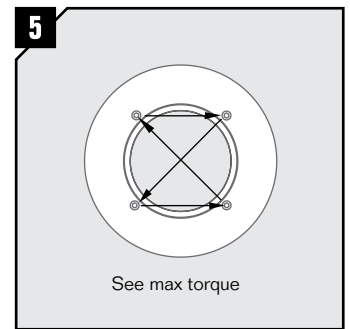
Remove all sharp edges that could damage the compression rubber.



Insert the sleeve.

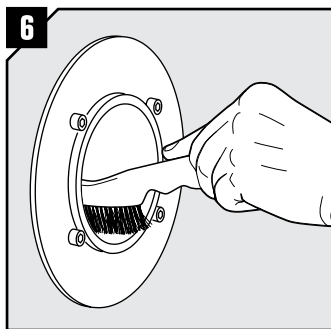
## Tightening torque

Type:	Rec. torque (Nm)
Sleeve	
23-50	5
68-150	9

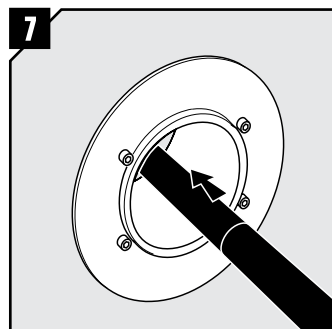


Tighten the bolts on the sleeve crosswise, in several turns. Use the same torque on each bolt.

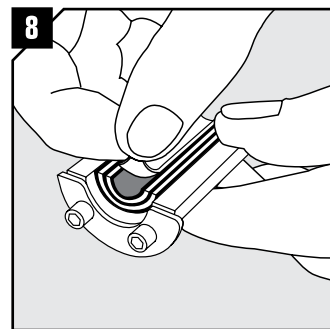
## Seal installation



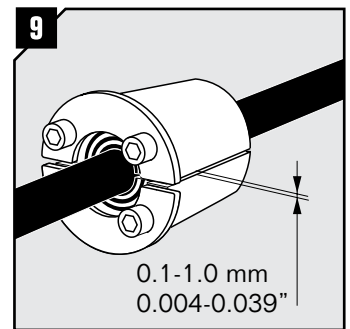
Remove any dirt in the sleeve.



Pull a cable/pipe through. Please see note.



Adapt the RS seal to the cable/pipe by peeling layers from the halves until you reach the gap seen in pic.9. The halves may not differ by more than one layer.

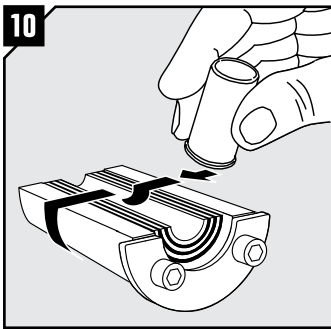


Achieve a 0.1–1.0 mm (0.004–0.039") gap between the two halves when held against the cable/pipe.

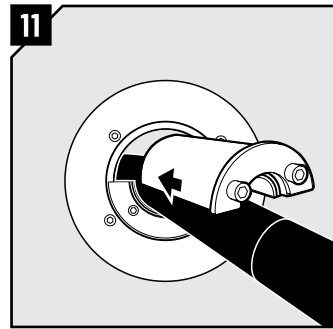
## Tightening torque

Type: RS	Approx. torque (Nm)
23-31	1
43-100	4
125-150	7

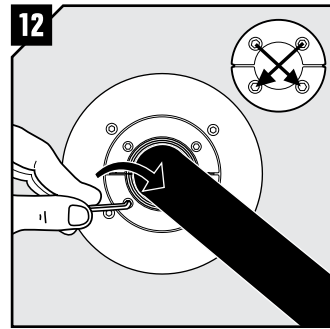
The torque depends on several things, e.g pipe size and material, amount of used lubricant or sleeve size etc.



Lubricate thoroughly on the inside surfaces and sparsely on the outside of the seal with Roxtec Lubricant.



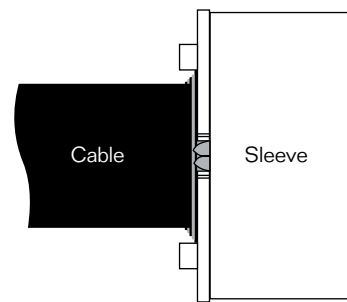
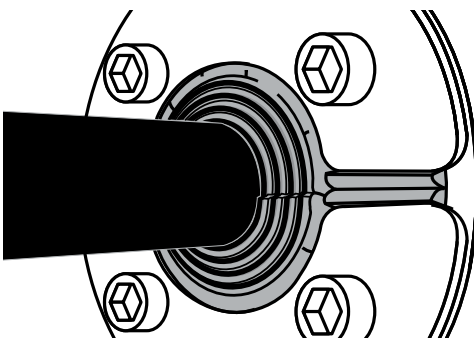
Insert the halves, one by one, into the sleeve.



Tighten the screws crosswise. The seal will compress and seal the transit. See table for approx. torque. See fig. 3 and 4 for reference.

Fig. 3

Fig. 4



The seal is compressed when rubber expands over the front fittings and the layers bulge outwards.

## Disassembly

Reverse order

## Note

- Wait 24 hours or longer after installation before exposing the cables/pipes to strain or pressure.
- Cable/pipe shall be routed perpendicularly to the sleeve or whole.
- Cable/pipe of considerable weight must be supported by surrounding structure or equipment to prevent damage or subsidence to the seal.

## DISCLAIMER

"The Roxtec cable entry sealing system ("the Roxtec system") is a modular-based system of sealing products consisting of different components. Each and every one of the components is necessary for the best performance of the Roxtec system. The Roxtec system has been certified to resist a number of different hazards. Any such certification, and the ability of the Roxtec system to resist such hazards, is dependent on all components that are installed as a part of the Roxtec system. Thus, the certification is not valid and does not apply unless all components installed as part of the Roxtec system are manufactured by or under license from Roxtec ("authorized manufacturer"). Roxtec gives no performance guarantee with respect to the Roxtec system, unless (I) all components installed as part of the Roxtec system are manufactured by an authorized manufacturer and (II) the purchaser is in compliance with (a), and (b), below.

(a) During storage, the Roxtec system or part thereof, shall be kept indoors in its original packaging at room temperature.

(b) Installation shall be carried out in accordance with Roxtec installation instructions in effect from time to time.

The product information provided by Roxtec does not release the purchaser of the Roxtec system, or part thereof, from the obligation to independently determine the suitability of the products for the intended process, installation and/or use.

Roxtec gives no guarantee for the Roxtec system or any part thereof and assumes no liability for any loss or damage whatsoever, whether direct, indirect, consequential, loss of profit or otherwise, occurred or caused by the Roxtec systems or installations containing components not manufactured by an authorized manufacturer and/or occurred or caused by the use of the Roxtec system in a manner or for an application other than for which the Roxtec system was designed or intended.

Roxtec expressly excludes any implied warranties of merchantability and fitness for a particular purpose and all other express or implied representations and warranties provided by statute or common law. User determines suitability of the Roxtec system for intended use and assumes all risk and liability in connection therewith. In no event shall Roxtec be liable for indirect, consequential, punitive, special, exemplary or incidental damages or losses."



Roxtec International AB  
Box 540, 371 23 Karlskrona, SWEDEN  
PHONE +46 455 36 67 00, FAX +46 455 820 12  
EMAIL info@roxtec.com, www.roxtec.com