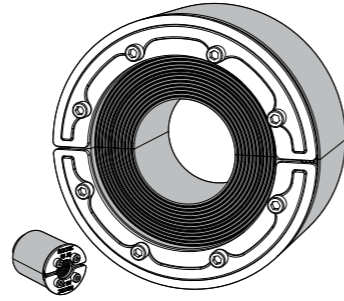


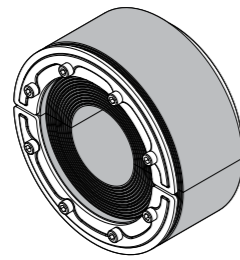
## Installation instructions Roxtec RS OMD seal



### Components



RS 25 OMD



RS 150 OMD



Roxtec Lubricant

### Technical data

The amount of torque needed to compress the seal depends on several things, e.g cable or pipe size, amount of used lubricant, aperture size or material in the cable sheath, etc.

Name	Aperture dimension Ø (mm)	For cable/pipe Ø (mm)	Torque (Nm)	Tool size (mm)
RS 25 OMD	26 – 30	3.6 – 12	~ 1	2.5
RS 31 OMD	32 – 35.5	4 – 17	~ 1	2.5
RS 43 OMD	44 – 51	4 – 23	~ 4	4
RS 50 OMD	51 – 58	8 – 30	~ 4	4
RS 68 OMD	69 – 76.5	26 – 48	~ 4	4
RS 100 OMD	101 – 108	48 – 70	~ 4	4
RS 125 OMD	126 – 143	66 – 98	~ 7	5
RS 150 OMD	151 – 168	93 – 119	~ 7	5

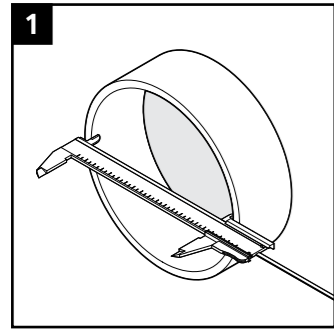
### Tools

- Allen key (not included)
- Caliper (not included)
- Brush (not included)

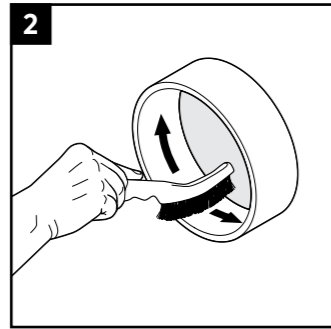
### To be installed in

- Welded sleeves
- Bolted sleeves
- Cast-in sleeves
- Core drilled holes

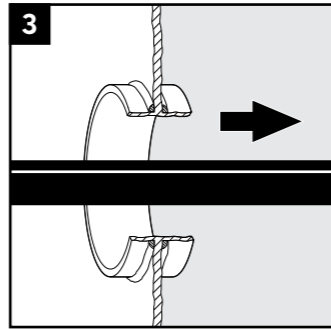
## Installation



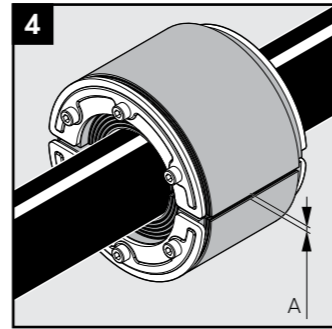
1 Make or verify an aperture.



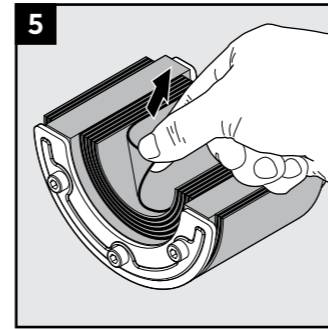
2 Clean the aperture.



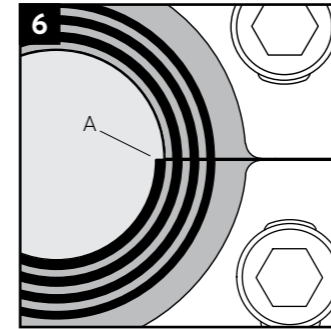
3 Pull the cable/pipe straight and centered through the aperture.



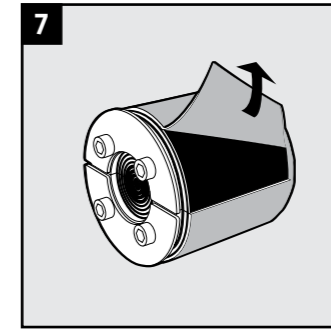
4 Achieve a 0-1.0 mm gap (A) between the two halves when held against the cable/pipe.



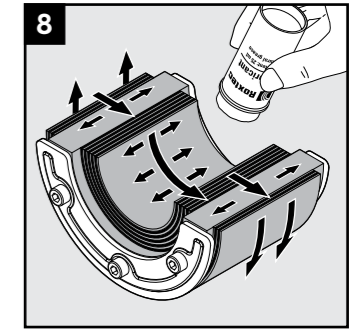
5 Adapt the seal by peeling off layers.



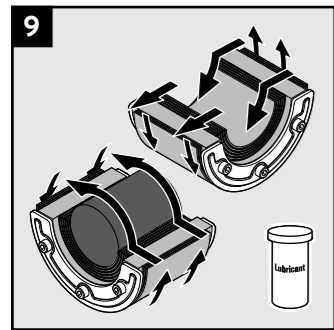
6 The number of layers may not differ (A) by more than one between the corresponding seal halves.



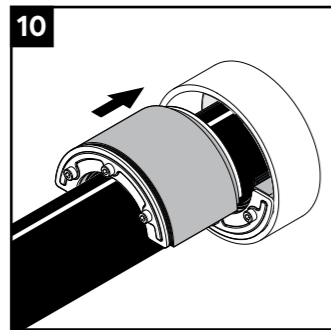
7 Adapt the seal to the aperture by peeling off layers.



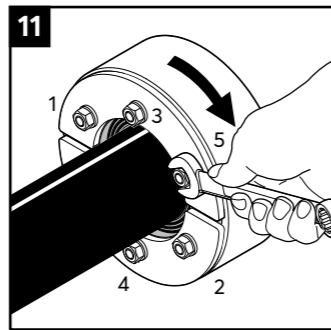
8 Lubricate the inside and the outside sealing surfaces with Roptec Lubricant.



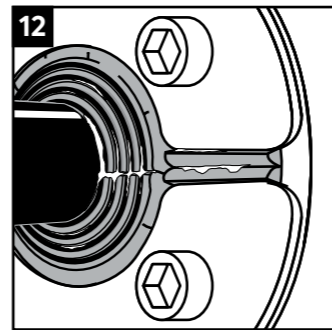
9 Lubricate the sealing surfaces of any spare seal. Do not remove the core.



10 Insert the halves into the aperture.



11 Tighten the bolts crosswise in small steps to firm compression.

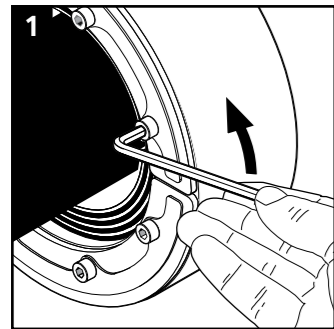


12 Bulging rubber and visible protruding lubricant indicate a tight seal.

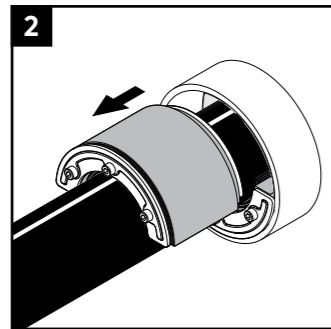


13 Check additional documentation, if applicable.

## Disassembly



1 Untighten the screws crosswise in small steps.



2 Remove the halves from the aperture.

## Note

- For optimum reliability, wait 24 hours or longer after installation before exposing the cables/pipes to strain or pressure.
- Cables/pipes shall be parallel to the sleeve/aperture.
- Cable/pipe with a considerable weight needs to be supported to prevent damage or subsidence to the seal.
- Approvals or certificates may include amendments or limitations related to this application.
- A seal with core is spare capacity.
- The latest version of this and related documents are found at [roxtec.com](http://roxtec.com).

## Disclaimer

"The Roptec cable entry sealing system ("the Roptec system") is a modular-based system of sealing products consisting of different components. Each and every one of the components is necessary for the best performance of the Roptec system. The Roptec system has been certified to resist a number of different hazards. Any such certification, and the ability of the Roptec system to resist such hazards, is dependent on all components that are installed as a part of the Roptec system. Thus, the certification is not valid and does not apply unless all components installed as part of the Roptec system are manufactured by or under license from Roptec ("authorized manufacturer"). Roptec gives no performance guarantee with respect to the Roptec system, unless (i) all components installed as part of the Roptec system are manufactured by an authorized manufacturer and (ii) the purchaser is in compliance with (a) and (b), below.

(a) During storage, the Roptec system or part thereof, shall be kept indoors in its original packaging at room temperature.

(b) Installation shall be carried out in accordance with Roptec installation instructions in effect from time to time.

The product information provided by Roptec does not release the purchaser of the Roptec system, or part thereof, from the obligation to independently determine the suitability of the products for the intended process, installation and/or use.

Roptec gives no guarantee for the Roptec system or any part thereof and assumes no liability for any loss or damage whatsoever, whether direct, indirect, consequential, loss of profit or otherwise, occurred or caused by the Roptec systems or installations containing components not manufactured by an authorized manufacturer and/or occurred or caused by the use of the Roptec system in a manner or for an application other than for which the Roptec system was designed or intended.

Roptec expressly excludes any implied warranties of merchantability and fitness for a particular purpose and all other express or implied representations and warranties provided by statute or common law. User determines suitability of the Roptec system for intended use and assumes all risk and liability in connection therewith. In no event shall Roptec be liable for indirect, consequential, punitive, special, exemplary or incidental damages or losses.\*



Roptec International AB  
 Box 540, 371 23 Karlskrona, SWEDEN  
 +46 455 36 67 00, [info@roxtec.com](mailto:info@roxtec.com)  
[www.roxtec.com](http://www.roxtec.com)