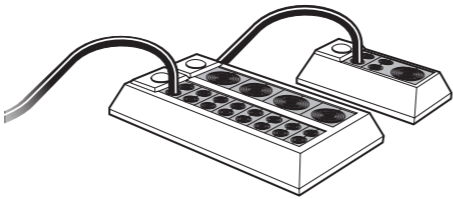


Installation instructions

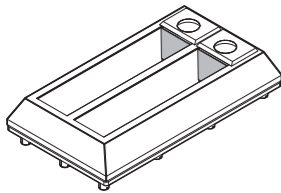
Roxtec CF 8, CF 32 transits



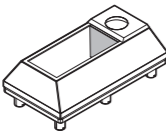
Safety information

Roxtec recommends that all installations are performed without facility operation. Follow national regulations and installation codes. Any action affecting the routed service should be performed according to manufacturer recommendations.

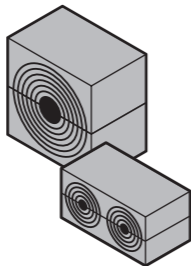
Components



Roxtec CF 32 frame



Roxtec CF 8 frame



Roxtec CM sealing modules

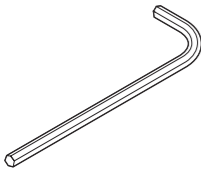


Roxtec Lubricant

Technical data

Name	Aperture dimensions WxH (mm)	Packing space (mm)	Torque (Nm)
CF 8	61(+1/-1) x 127(+1/-1)	40 x 80	8 – 12
CF 32	110(+1/-1) x 216(+1/-1)	40 x 160	8 – 12

Tools



Allen key
(not included)

Additional information



Additional information is available, such as drawings, apertures, videos, ratings and certificates.

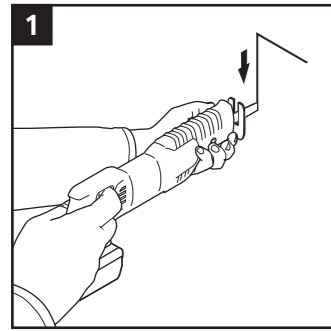


Scan QR code or visit roxtec.com for additional information.

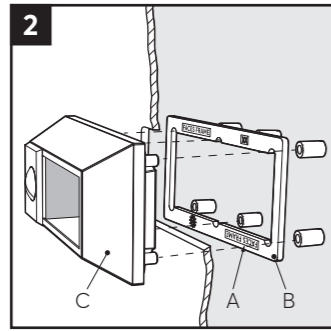
To be installed in

- Cabinets and enclosures

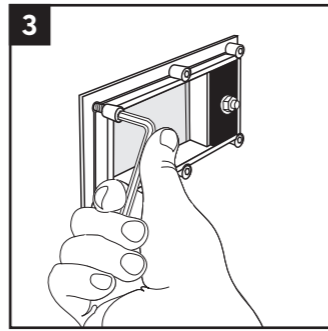
Installation



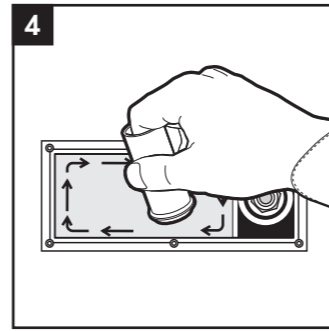
Make or verify an aperture.



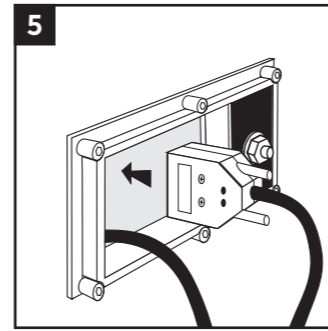
The text (A) on the counterframe (B) shall always face the frame (C).



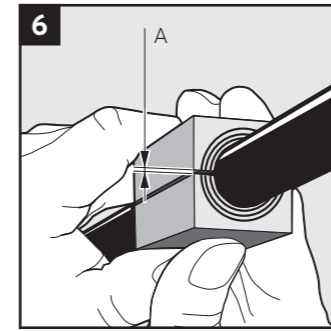
Fasten the hexagon nuts cross-wise in small steps, on the back-side. Recommended torque 4Nm.



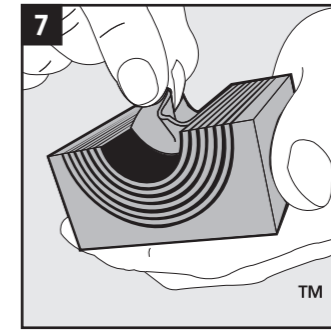
Lubricate the inside sealing surfaces of the frame with Roxtec Lubricant, especially into the corners.



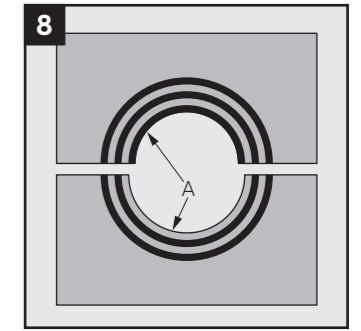
Insert the cables/pipes through the frame.



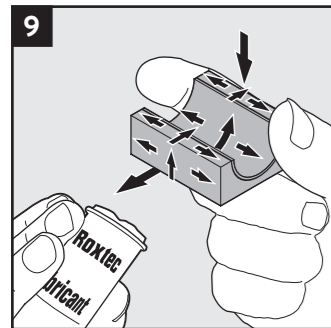
Achieve a 0.1-1.0 mm (A) gap between the two halves when held against the cable/pipe.



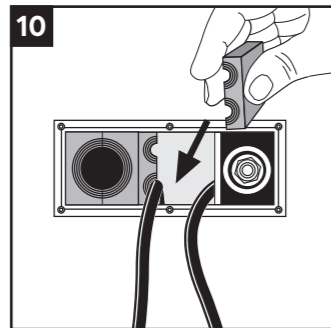
Adapt the modules by peeling off layers.



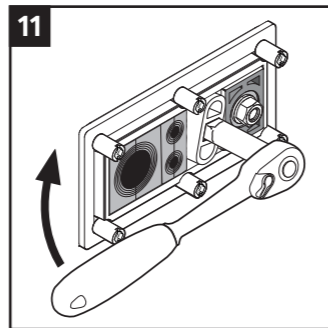
The number of layers may not differ (A) by more than one between the corresponding module halves.



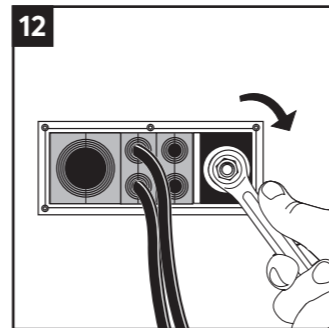
Lubricate the sealing surfaces of all modules.



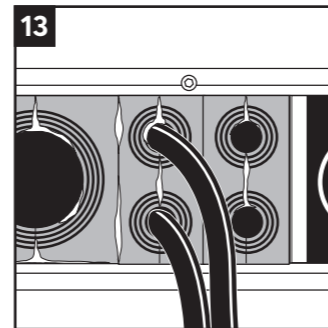
Insert the modules according to your packing plan.



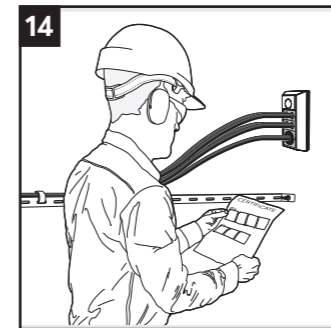
Roxtec special tools are available. The use of a Roxtec pre-compression tool will simplify the installation.



Tighten the nut on the compression unit firmly.

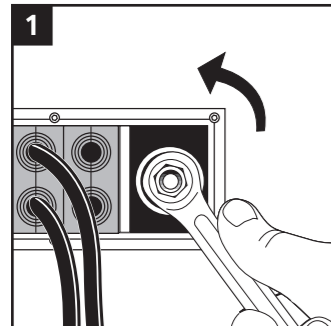


Visible excess lubricant is a sign of good compression.

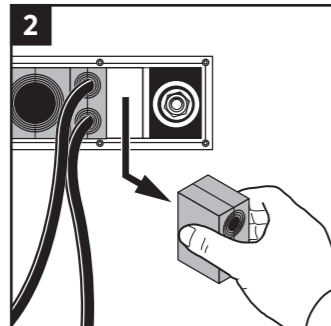


Check additional documentation, if applicable.

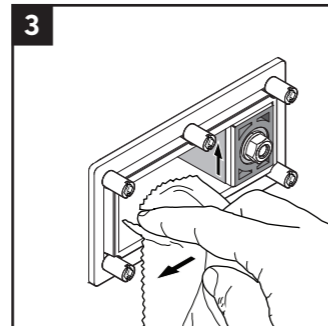
Disassembly and reinstallation



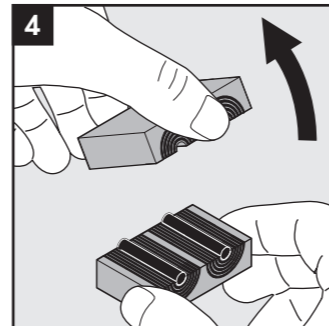
Untighten the nut.



Remove the modules needed.



Clean the exposed packing space.



Continue the reinstallation.

Note

- For optimum reliability, wait 24 hours or longer after installation before exposing the cables/pipes to strain or pressure.
- To be used with: CM components.
- Cables shall go straight through the frame.
- The latest version of this and related documents are found at roxtec.com.
- Approvals or certificates may include amendments or limitations related to this application.

After installation inspection

- Is there visible protruding lubricant?
- Is the combined height of modules correct according to the frame packing height?
- Make sure that all modules are placed correctly and fully inserted after compression.

Disclaimer

"The Roxtec cable and pipe entry sealing system ('the Roxtec system') is a modular-based system of sealing products consisting of different components. Each and every one of the components is necessary for the best performance of the Roxtec system. The Roxtec system has been certified to resist a number of different hazards. Any such certification, and the ability of the Roxtec system to resist such hazards, is dependent on all components that are installed as a part of the Roxtec system. Thus, the certification is not valid and does not apply unless all components installed as part of the Roxtec system are manufactured by or under license from Roxtec (authorized manufacturer). Roxtec gives no performance guarantee with respect to the Roxtec system, unless (I) all components installed as part of the Roxtec system are manufactured by an authorized manufacturer and (II) the purchaser is in compliance with (a), and (b), below.
(a) During storage, the Roxtec system or part thereof, shall be kept indoors in its original packaging at room temperature.
(b) Installation shall be carried out in accordance with Roxtec installation instructions in effect from time to time.
The product information provided by Roxtec does not release the purchaser of the Roxtec system, or part thereof, from the obligation to independently

determine the suitability of the products for the intended process, installation and/or use.
Roxtec gives no guarantee for the Roxtec system or any part thereof and assumes no liability for any loss or damage whatsoever, whether direct, indirect, consequential, loss of profit or otherwise, occurred or caused by the Roxtec systems or installations containing components not manufactured by an authorized manufacturer and/or occurred or caused by the use of the Roxtec system in a manner or for an application other than for which the Roxtec system was designed or intended.
Roxtec expressly excludes any implied warranties of merchantability and fitness for a particular purpose and all other express or implied representations and warranties provided by statute or common law. User determines suitability of the Roxtec system for intended use and assumes all risk and liability in connection therewith. In no event shall Roxtec be liable for indirect, consequential, punitive, special, exemplary or incidental damages or losses.
The Roxtec products are offered and sold in accordance with the conditions of the Roxtec General Terms of Sales. The latest version of the Roxtec General Terms of Sales can be found and downloaded from roxtec.com/general-terms-of-sales."



Roxtec International AB
Box 540, 371 23 Karlskrona, SWEDEN
+46 455 36 67 00, info@roxtec.com
www.roxtec.com