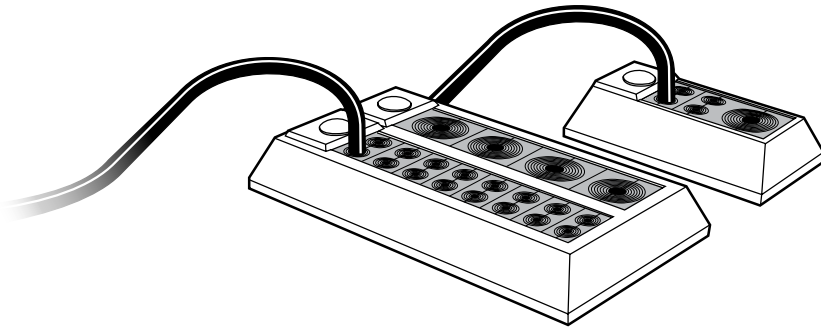
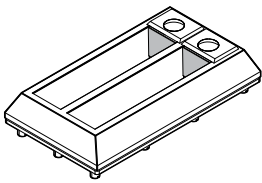


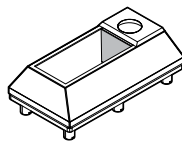
## Installation instructions Roxtec CF 8, CF 32 frames



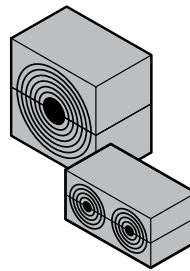
### Components



Roxtec CF 32 frame



Roxtec CF 8 frame

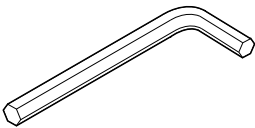


Roxtec CM sealing modules



Roxtec Lubricant

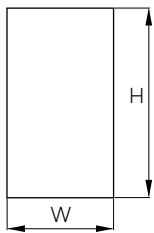
### Tools



Allen key

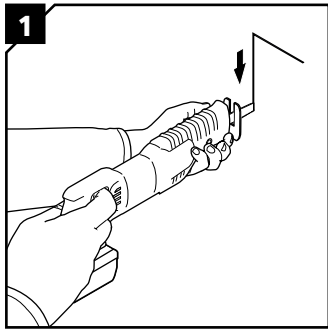
### Aperture dimensions

Measures in millimeters (mm). Maximum structural thickness: 4 mm. Dimension tolerances:  $\pm 0,5$  mm.

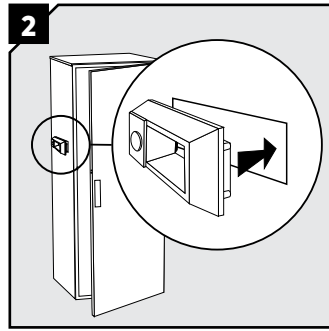


Frame size	Width (W)	Height (H)
CF 8	61	127
CF 32	110	216

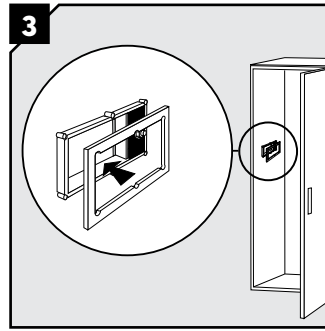
# Installation



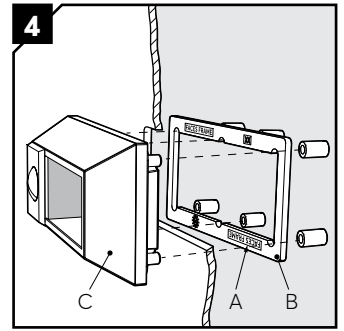
1 Make or verify an aperture.



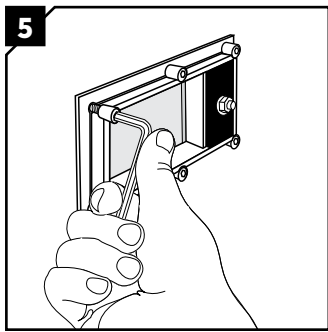
2 Insert the CF frame from the outside of the cabinet.



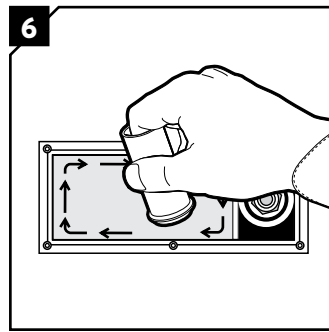
3 Insert the counter frame from the inside of the cabinet.



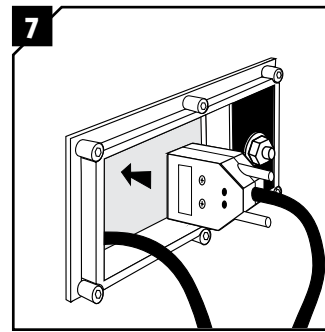
4 The text (A) on the counterframe (B) shall always face the frame (C).



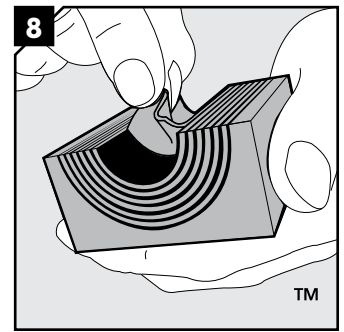
5 Fasten the hexagon nuts crosswise in small steps, on the backside.



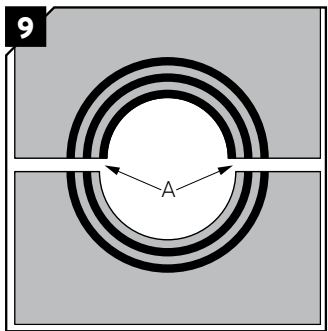
6 Lubricate the inside sealing surfaces of the frame with Roxtec Lubricant, especially into the corners.



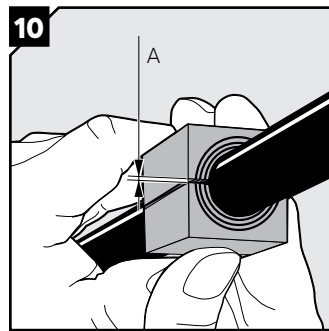
7 Insert the cables/pipes through the frame.



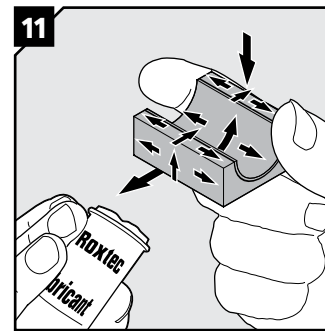
8 Adapt modules which are to hold cables or pipes by peeling off layers until you reach the gap seen in step 10.



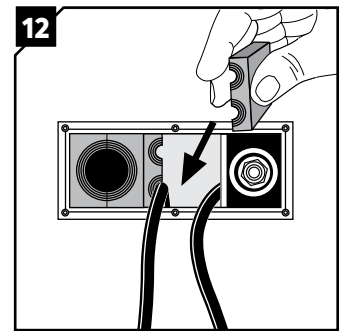
9 The number of layers may not differ (A) by more than one between the corresponding module halves.



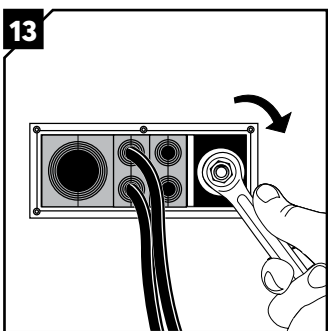
10 Achieve a 0.1-1.0 mm (A) gap between the two halves when held against the cable/pipe.



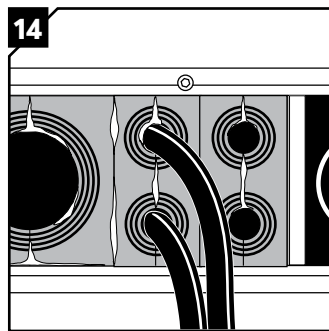
11 Lubricate the sealing surfaces of all modules.



12 Insert the modules according to your packing plan. Start with the largest modules.

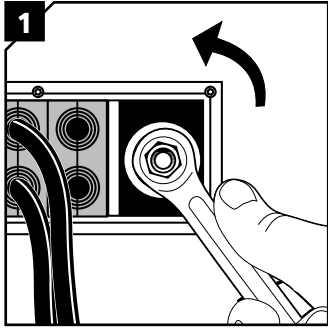


13 Tighten the nut on the compression unit firmly. Recommended torque 8-12 Nm.

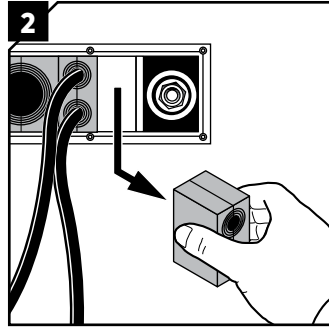


14 Visible excess lubricant are a sign of good compression.

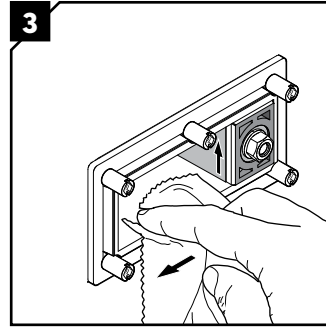
## Disassembly and reinstallation



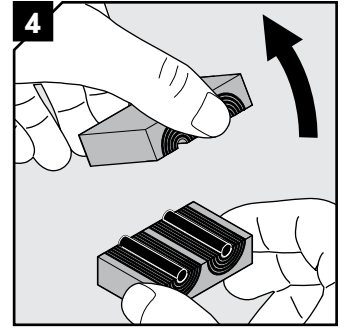
1  
Untighten the nut.



2  
Remove the modules needed.



3  
Clean the exposed packing space.



4  
Continue the reinstallation from step 6 on previous page.

## Note

- For optimum reliability, wait 24 hours or longer after installation before exposing the cables/pipes to strain or pressure.
- To be used with: CM components.
- Cables shall go straight through the frame.

## DISCLAIMER

"The Roxtec cable entry sealing system ("the Roxtec system") is a modular-based system of sealing products consisting of different components. Each and every one of the components is necessary for the best performance of the Roxtec system. The Roxtec system has been certified to resist a number of different hazards. Any such certification, and the ability of the Roxtec system to resist such hazards, is dependent on all components that are installed as a part of the Roxtec system. Thus, the certification is not valid and does not apply unless all components installed as part of the Roxtec system are manufactured by or under license from Roxtec ("authorized manufacturer"). Roxtec gives no performance guarantee with respect to the Roxtec system, unless (I) all components installed as part of the Roxtec system are manufactured by an authorized manufacturer and (II) the purchaser is in compliance with (a), and (b), below.

(a) During storage, the Roxtec system or part thereof, shall be kept indoors in its original packaging at room temperature.

(b) Installation shall be carried out in accordance with Roxtec installation instructions in effect from time to time.

The product information provided by Roxtec does not release the purchaser of the Roxtec system, or part thereof, from the obligation to independently determine the suitability of the products for the intended process, installation and/or use.

Roxtec gives no guarantee for the Roxtec system or any part thereof and assumes no liability for any loss or damage whatsoever, whether direct, indirect, consequential, loss of profit or otherwise, occurred or caused by the Roxtec systems or installations containing components not manufactured by an authorized manufacturer and/or occurred or caused by the use of the Roxtec system in a manner or for an application other than for which the Roxtec system was designed or intended.

Roxtec expressly excludes any implied warranties of merchantability and fitness for a particular purpose and all other express or implied representations and warranties provided by statute or common law. User determines suitability of the Roxtec system for intended use and assumes all risk and liability in connection therewith. In no event shall Roxtec be liable for indirect, consequential, punitive, special, exemplary or incidental damages or losses.\*



Roxtec International AB  
Box 540, 371 23 Karlskrona, SWEDEN  
PHONE +46 455 36 67 00  
EMAIL [info@roxtec.com](mailto:info@roxtec.com), [www.roxtec.com](http://www.roxtec.com)