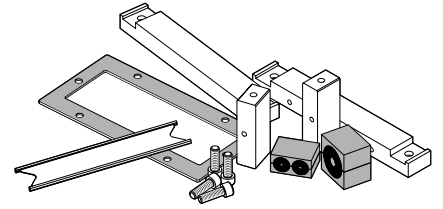
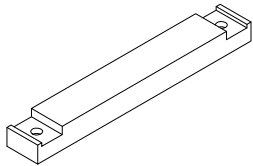


# Installation instructions

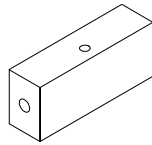
## Roxtec CF 24



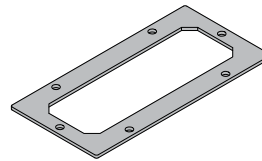
### Components



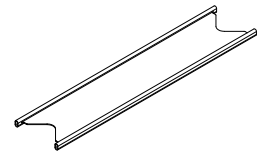
Long side



Short side

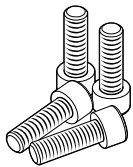


Gasket

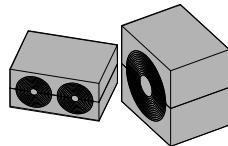


Stayplate

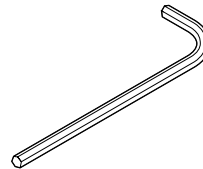
### Tools



Fasteners



Modules



Allen key (not included)

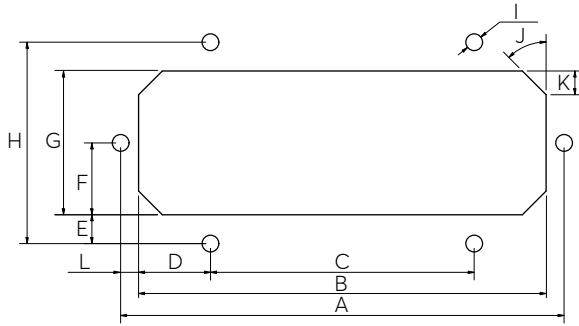
### Technical data

For modules.

Name	External dimensions WxHxD (mm)	For cable/pipe Ø (mm)
CM 15w40	40 x 15 x 30	3.5 – 10.5
CM 20	20 x 20 x 30	4 – 14.5
CM 20w40	40 x 20 x 30	3.5 – 16.5
CM 30	30 x 30 x 30	10 – 25
CM 30w40	40 x 30 x 30	10 – 25
CM 40	40 x 40 x 30	21.5 – 34.5
CM 40 10–32	40 x 40 x 30	9.5 – 32.5

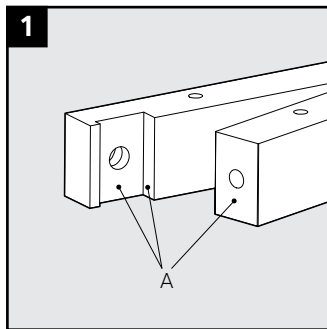
## Aperture dimensions

Measures in millimeters (mm).  
Angles in degrees (°).

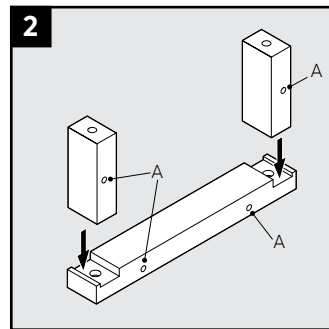


A	185
B	170
C	110
D	30
E	12
F	30
G	60
H	84
I	7
J	45
K	10
L	7.5

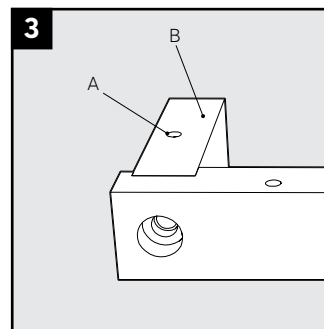
## Installation



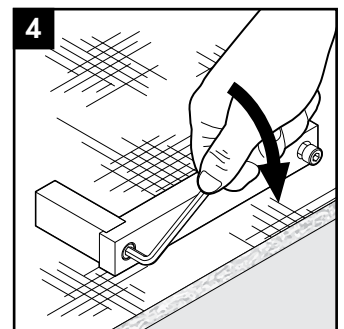
Lubricate the contact surfaces (A) of the frame parts.



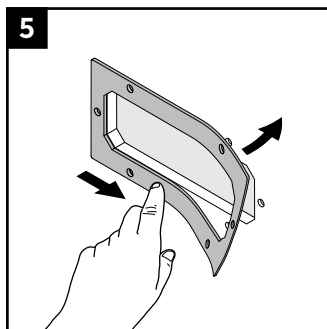
Put together the two short frame parts with one long part. The mounting holes (A) shall be on the same side.



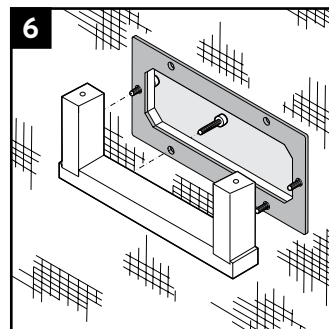
The mounting holes (A) on the short sides (B) shall face outwards.



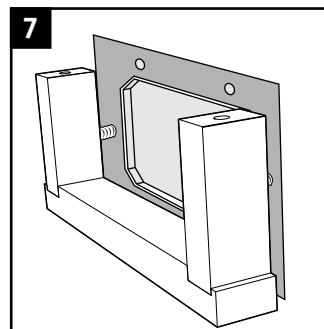
Tighten the screws.



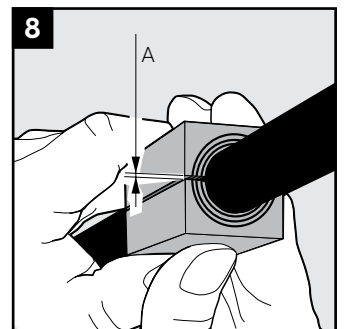
Place the self-adhesive gasket on the structure.



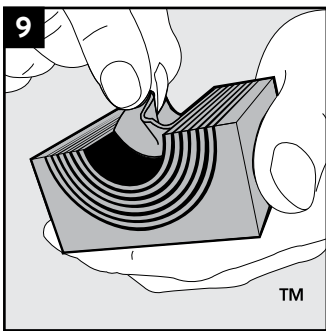
Fasten the frame loosely to the structure with four screws.



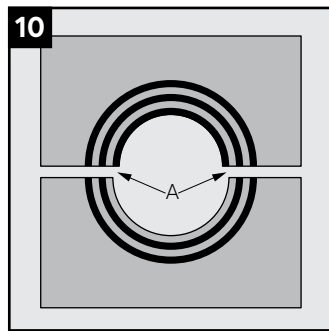
The frame loosely attached to the structure.



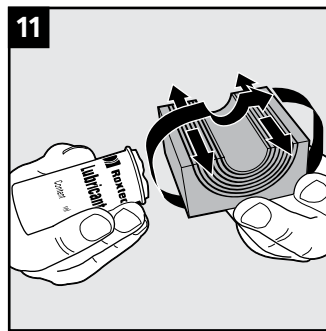
Achieve a 0.1-1.0 mm (A) gap between the two halves of the sealing module when held against the cable/pipe.



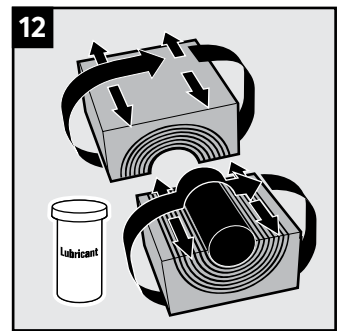
Adapt the modules by peeling off layers.



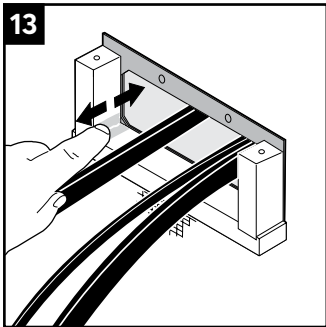
The number of layers may not differ (A) by more than one between the corresponding module halves.



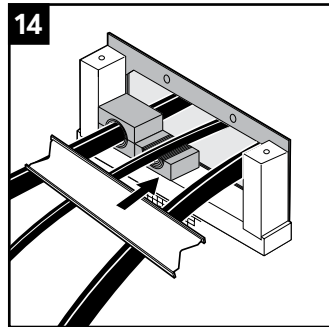
Lubricate all sealing surfaces on the modules.



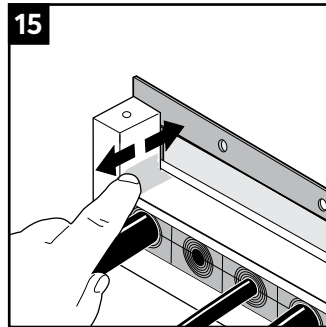
Lubricate the sealing surfaces of the spare modules.



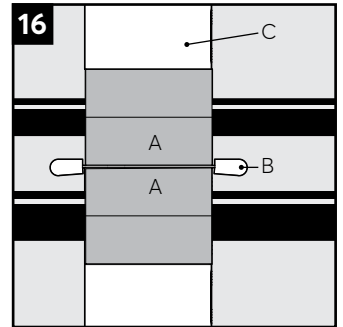
Lubricate the sealing surfaces of the frame, especially the corners.



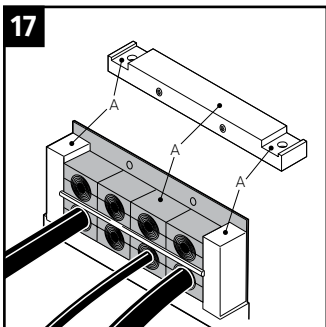
Insert the modules, cables/pipes and stayplate according to your packing plan.



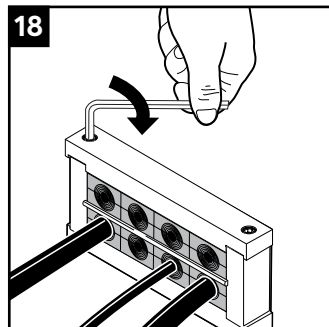
Lubricate the sealing surfaces, especially the corners.



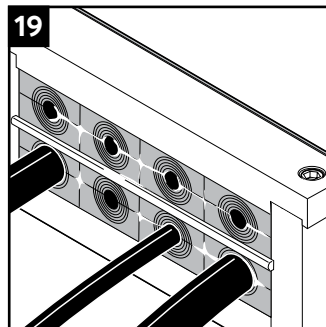
Ensure that the modules (A) are within the frame (C) and stayplate edges (B).



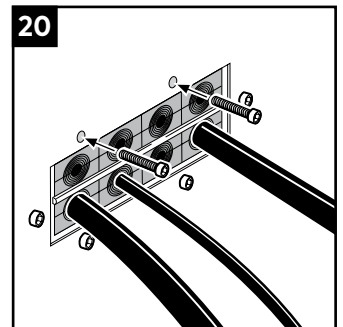
Lubricate the sealing surfaces (A) of the frame and modules.



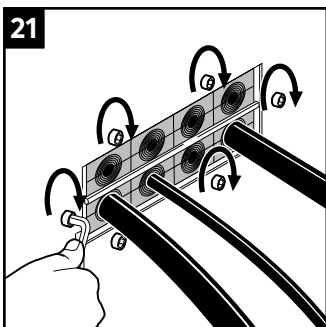
Attach the last long part with the mounting hole facing the structure. Tighten the screws to full stop alternately in small steps.



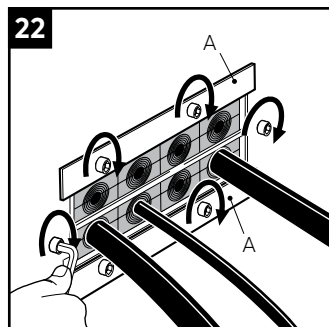
Visible excess lubricant is a sign of good compression.



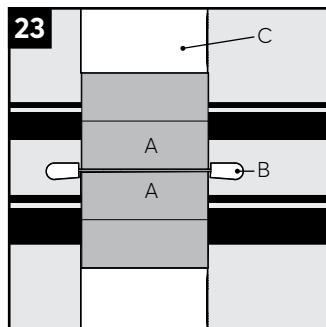
Fasten the frame to the wall from the backside using the last two screws.



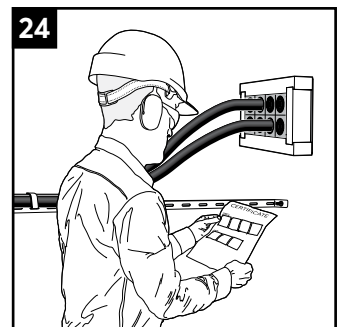
Tighten the screws crosswise on the backside.



For structures thinner than 2 mm, use a Roxtec counter frame (A).

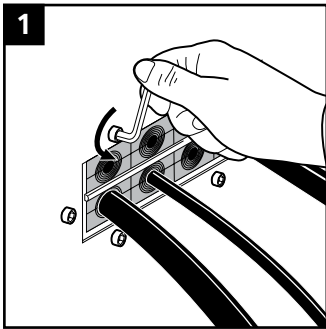


Ensure that the modules (A) are within the frame (C) and stayplate edges (B) after compression.

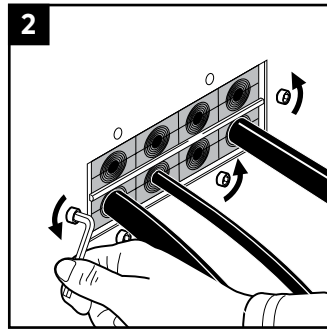


Make a final check! Different approvals or certificates may include amendments or limitations related to this application.

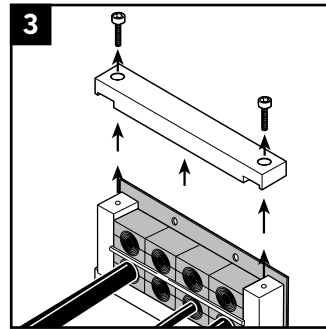
## Disassembly



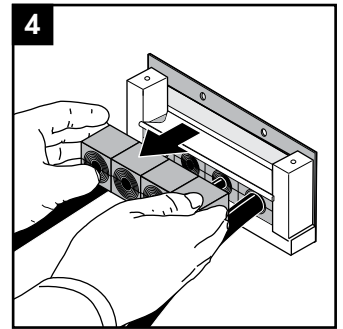
1 Untighten and remove the two screws holding the upper frame part.



2 Untighten the other screws slightly to allow movement of the frame.

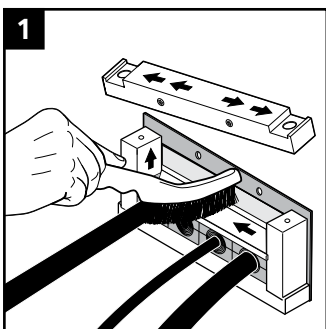


3 Remove the two screws.

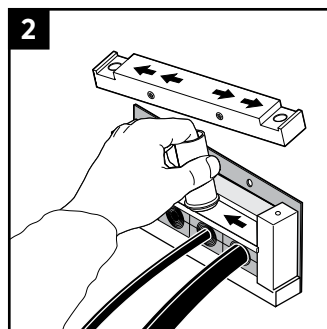


4 Remove the modules required. Keep the rows sorted until it is time to reinstall the transit. If a module is damaged or replaced, all modules in that row must be replaced.

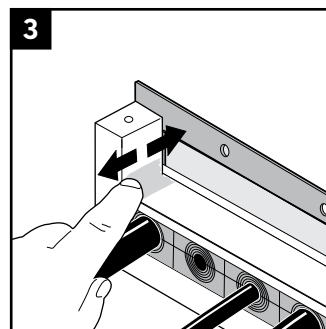
## Reinstallation



1 Clean the exposed sealing surfaces.



2 Lubricate the inside surfaces all around with Roxtec Lubricant, especially into the corners. Continue the installation.



## Note

- For optimum reliability, wait 24 hours or longer after installation before exposing the cables/pipes to strain or pressure.
- To be used with: CM components.
- Cables/pipes shall go straight through the frame.
- Cores or cables/pipes must be present in all seals.
- Cables/pipes shall be parallel to the sleeve/aperture.
- Cable/pipe with a considerable weight needs to be supported to prevent damage or subsidence to the seal.
- Approvals or certificates may include amendments or limitations related to this application.
- A seal with core is spare capacity.
- The latest version of this and related documents are found at [roxtec.com](http://roxtec.com).

## Disclaimer

"The Roxtec cable entry sealing system ("the Roxtec system") is a modular-based system of sealing products consisting of different components. Each and every one of the components is necessary for the best performance of the Roxtec system. The Roxtec system has been certified to resist a number of different hazards. Any such certification, and the ability of the Roxtec system to resist such hazards, is dependent on all components that are installed as a part of the Roxtec system. Thus, the certification is not valid and does not apply unless all components installed as part of the Roxtec system are manufactured by or under license from Roxtec ("authorized manufacturer"). Roxtec gives no performance guarantee with respect to the Roxtec system, unless (I) all components installed as part of the Roxtec system are manufactured by an authorized manufacturer and (II) the purchaser is in compliance with (a), and (b), below.

(a) During storage, the Roxtec system or part thereof, shall be kept indoors in its original packaging at room temperature.  
 (b) Installation shall be carried out in accordance with Roxtec installation instructions in effect from time to time.

The product information provided by Roxtec does not release the purchaser of the Roxtec system, or part thereof, from the obligation to independently determine the suitability of the products for the intended process, installation and/or use.

Roxtec gives no guarantee for the Roxtec system or any part thereof and assumes no liability for any loss or damage whatsoever, whether direct, indirect, consequential, loss of profit or otherwise, occurred or caused by the Roxtec systems or installations containing components not manufactured by an authorized manufacturer and/or occurred or caused by the use of the Roxtec system in a manner or for an application other than for which the Roxtec system was designed or intended.

Roxtec expressly excludes any implied warranties of merchantability and fitness for a particular purpose and all other express or implied representations and warranties provided by statute or common law. User determines suitability of the Roxtec system for intended use and assumes all risk and liability in connection therewith. In no event shall Roxtec be liable for indirect, consequential, punitive, special, exemplary or incidental damages or losses.\*



Roxtec International AB  
 Box 540, 371 23 Karlskrona, SWEDEN  
 +46 455 36 67 00, [info@roxtec.com](mailto:info@roxtec.com)  
[www.roxtec.com](http://www.roxtec.com)