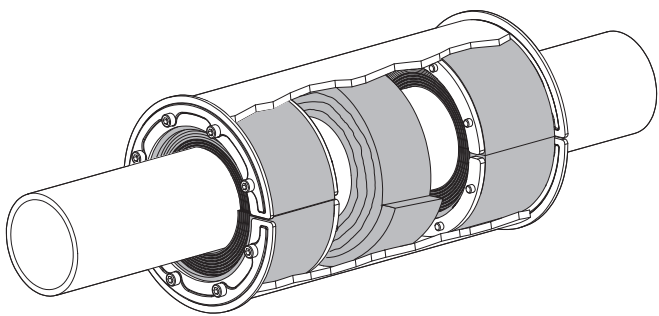


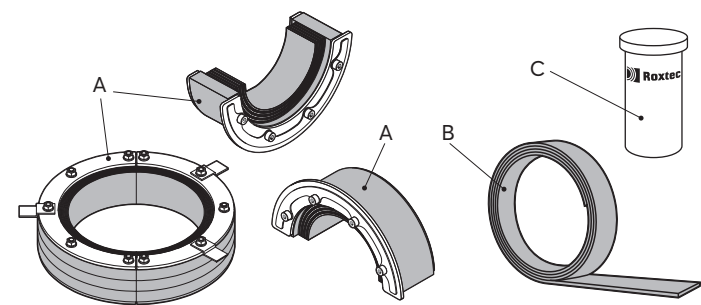


Installation instructions

Roxtec RS PPS seal



Components



A. Roxtec RS PPS seals
B. Intumescent strip
C. Roxtec Lubricant

Additional information



Scan QR code or visit roxtec.com for additional information, such as drawings, apertures, videos, ratings and certificates.

Technical data

The required tightening torque may vary depending on pipe diameter.

Name	Aperture dimension Ø (mm)	For cable/pipe Ø (mm)	Torque (Nm)	Tool size (mm)
RS PPS 31	31 – 32	4 – 17	~ 1	2.5
RS PPS 43	43 – 45	4 – 23	~ 4	4
RS PPS 50	50 – 52	8 – 30	~ 4	4
RS PPS 68	68 – 70	26 – 48	~ 4	4
RS PPS 75	75 – 77	24 – 54	~ 4	4
RS PPS 100	100 – 102	48 – 70	~ 4	4
RS PPS 125	125 – 127	66 – 98	~ 7	5
RS PPS 150	150 – 152	93 – 119	~ 7	5
RS PPS 175	175 – 177	119 – 145	~ 7	5
RS PPS 200	200 – 203	138 – 170	~ 7	5
RS PPS 225	225 – 228	151 – 181	~ 17	10
RS PPS 250	250 – 253	176 – 206	~ 17	10
RS PPS 300	300 – 303	206 – 236	~ 17	13
RS PPS 350	350 – 353	244 – 286	~ 17	13
RS PPS 400	400 – 403	294 – 336	~ 17	13
RS PPS 450	450 – 453	344 – 386	~ 35	17

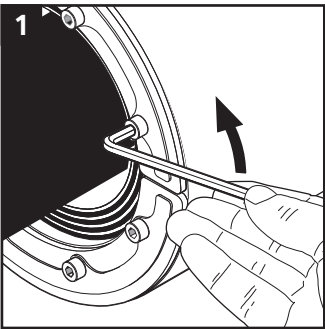
Tools

- Allen key (not included)
- Spanner (not included)
- Caliper (not included)

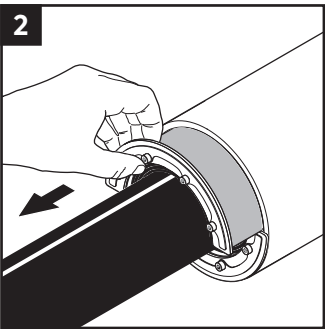
To be installed in

- Welded sleeves
- Bolted sleeves

Disassembly

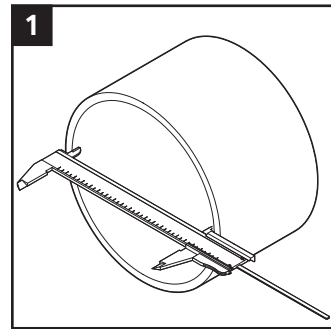


Untighten the screws crosswise in small steps.

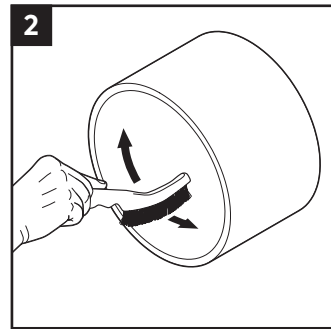


Remove the seal.

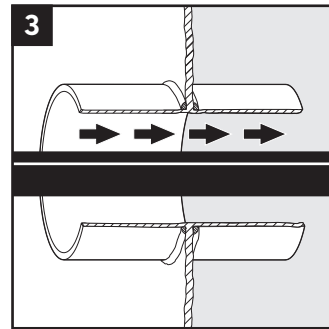
Installation



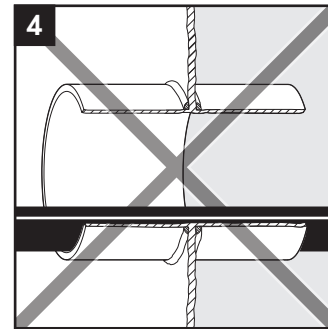
Make or verify an aperture.



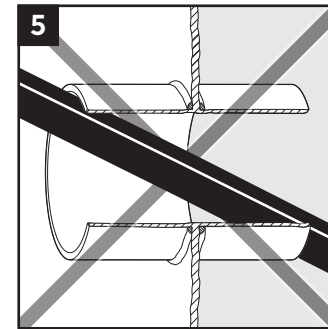
Clean the aperture.



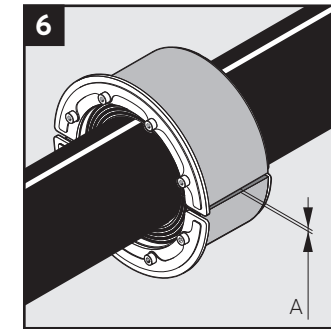
Pull the pipe straight and centered through the aperture.



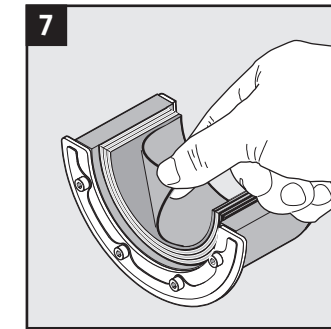
Not acceptable.



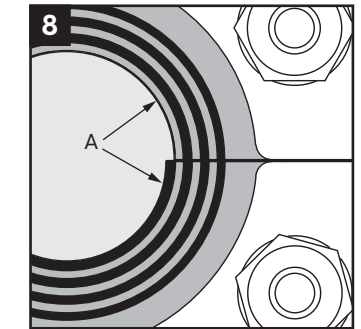
Not acceptable.



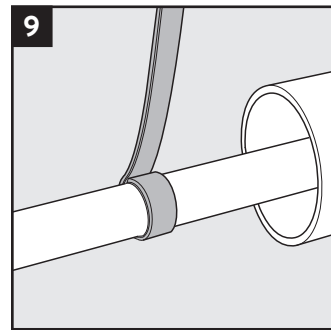
Achieve a 0-1.0 mm gap (A) between the two halves when held against the cable/pipe.



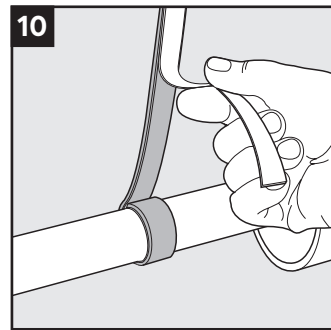
Adapt the seal by peeling off layers.



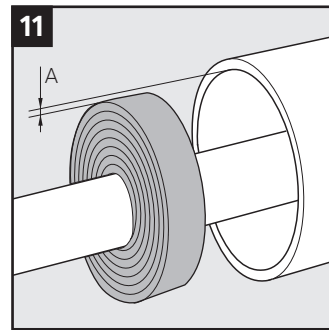
The number of layers may not differ (A) by more than one between the corresponding seal halves.



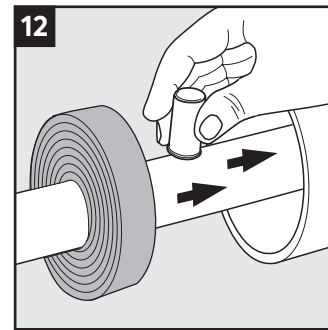
Wrap the intumescent strip once around the pipe without removing the protective tape to allow axial movement.



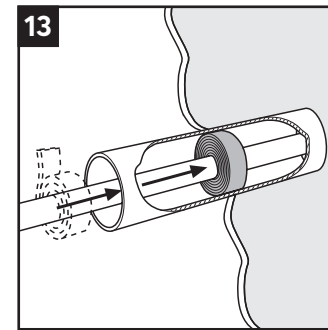
Break the protective tape from the strip and remove it.



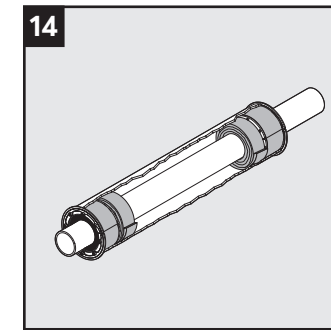
Continue to wrap the strip onto the pipe until there is 1.0-5.0 mm free space (A) left between the strip and sleeve.



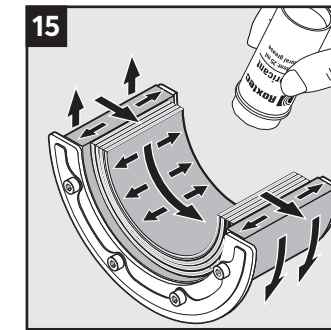
Lubricate the pipe with Roxtec Lubricant.



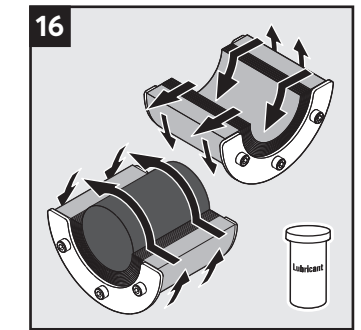
Place the intumescent material at the center of the sleeve. Continue to wrap all the remaining intumescent material onto the pipe and into the sleeve.



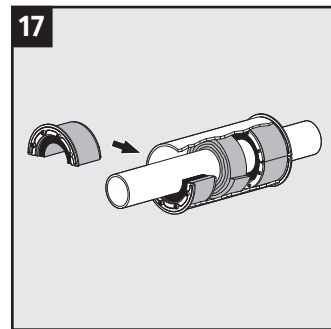
For longer sleeves it is recommended to have intumescent material divided evenly close to each seal.



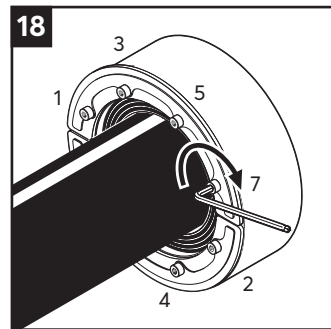
Lubricate the inside and the outside sealing surfaces with Roxtec Lubricant.



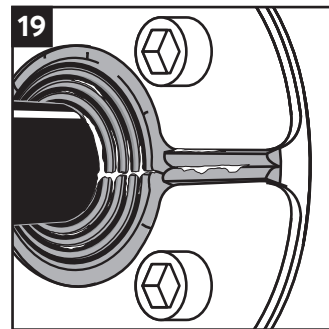
Lubricate the sealing surfaces of any spare seal. Do not remove the core.



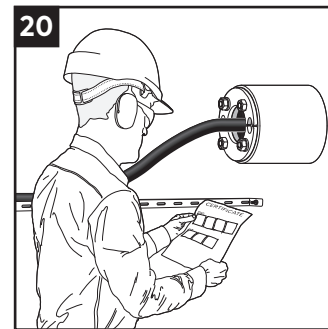
Insert the seal halves one by one into the sleeve from both sides.



Tighten the bolts crosswise in small steps to firm compression.



Bulging rubber and visible protruding lubricant indicate a tight seal.



Check additional documentation, if applicable.

After installation inspection

- Are the screws tightened evenly?
- Are the layers peeled correctly?
- Is there visible protruding lubricant?
- Is the rubber bulging?
- Is the intumescent material installed?

Note

- For optimum reliability, wait 24 hours or longer after installation before exposing the cables/pipes to strain or pressure.
- Pipes shall be parallel to the sleeve/aperture.
- Pipe with a considerable weight needs to be supported to prevent damage or subsidence to the seal.
- Approvals or certificates may include amendments or limitations related to this application.
- A seal with core is spare capacity.
- Sustained watertightness after fire exposure requires a longer sleeve.
- The latest version of this and related documents are found at roxtec.com.

Disclaimer

"The Roxtec cable and pipe entry sealing system ('the Roxtec system') is a modular-based system of sealing products consisting of different components. Each and every one of the components is necessary for the best performance of the Roxtec system. The Roxtec system has been certified to resist a number of different hazards. Any such certification, and the ability of the Roxtec system to resist such hazards, is dependent on all components that are installed as a part of the Roxtec system. Thus, the certification is not valid and does not apply unless all components installed as part of the Roxtec system are manufactured by or under license from Roxtec (authorized manufacturer). Roxtec gives no performance guarantee with respect to the Roxtec system, unless (i) all components installed as part of the Roxtec system are manufactured by an authorized manufacturer and (ii) the purchaser is in compliance with (a), and (b), below.

(a) During storage, the Roxtec system or part thereof, shall be kept indoors in its original packaging at room temperature.

(b) Installation shall be carried out in accordance with Roxtec installation instructions in effect from time to time.

The product information provided by Roxtec does not release the purchaser of the Roxtec system, or part thereof, from the obligation to independently

determine the suitability of the products for the intended process, installation and/or use.

Roxtec gives no guarantee for the Roxtec system or any part thereof and assumes no liability for any loss or damage whatsoever, whether direct, indirect, consequential, loss of profit or otherwise, occurred or caused by the Roxtec systems or installations containing components not manufactured by an authorized manufacturer and/or occurred or caused by the use of the Roxtec system in a manner or for an application other than for which the Roxtec system was designed or intended.

Roxtec expressly excludes any implied warranties of merchantability and fitness for a particular purpose and all other express or implied representations and warranties provided by statute or common law. User determines suitability of the Roxtec system for intended use and assumes all risk and liability in connection therewith. In no event shall Roxtec be liable for indirect, consequential, punitive, special, exemplary or incidental damages or losses.

The Roxtec products are offered and sold in accordance with the conditions of the Roxtec General Terms of Sales. The latest version of the Roxtec General Terms of Sales can be found and downloaded from roxtec.com/general-terms-of-sales."



Roxtec International AB
Box 540, 371 23 Karlskrona, SWEDEN
+46 455 36 67 00, info@roxtec.com
www.roxtec.com