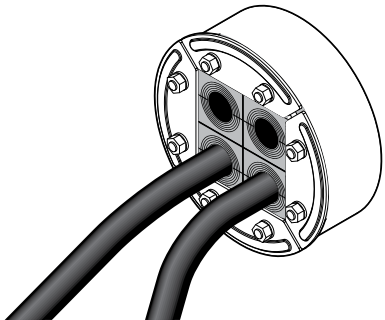
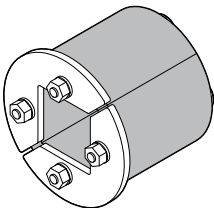


Installation instructions

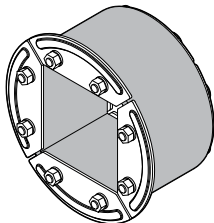
Roxtec R transit



Components



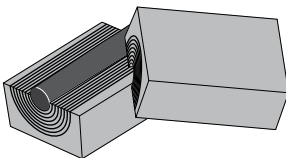
Roxtec R 50 - R 75 frame



Roxtec R 100 - R 200 frame



Roxtec Lubricant



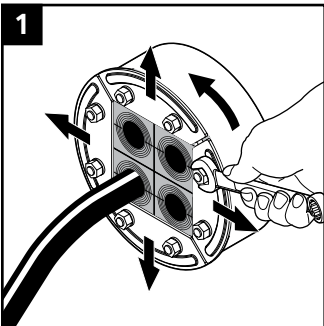
Roxtec RM sealing modules (not included)

Technical data

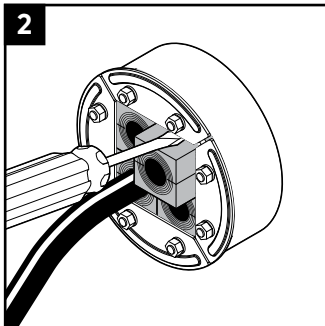
The amount of torque needed to compress the seal depends on several things, e.g cable or pipe size, amount of used lubricant, aperture size or material in the cable sheath, etc.

Name	Aperture dimension Ø (mm)	Packing space (mm)	Torque (Nm)	Tool size (mm)
R 50	50 – 52	30 x 30	4 – 5	3
R 70	70 – 72	40 x 40	6 – 7	10
R 75	75 – 77	40 x 40	6 – 7	10
R 100	100 – 102	60 x 60	6 – 7	10
R 125	125 – 127	80 x 80	6 – 7	10
R 127	127 – 129	80 x 80	6 – 7	10
R 150	150 – 152	90 x 90	9 – 11	13
R 200	200 – 202	120 x 120	9 – 11	13

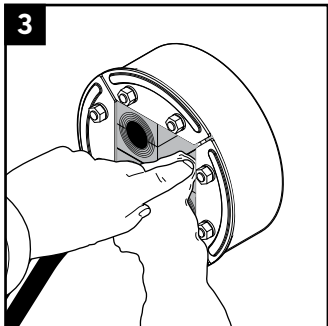
Disassembly and reinstallation



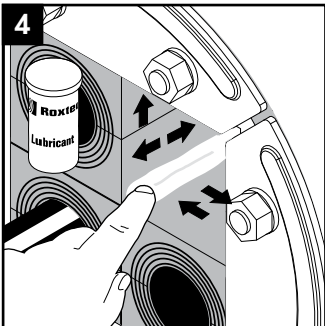
Untighten the nuts crosswise in small steps. Make sure the nuts are completely loose. Push the front fittings to the sides.



Remove the modules by using a flat tool. Replace any damaged modules.



Clean the inside surfaces of the exposed packing space.



Lubricate the inside surfaces all around with Roxtec Lubricant, especially into the corners. Continue the reinstallation.

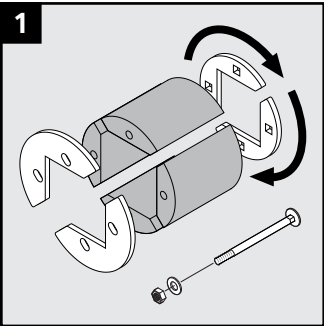
Tools

- Spanner (not included)
- Allen key (not included)
- Caliper (not included)

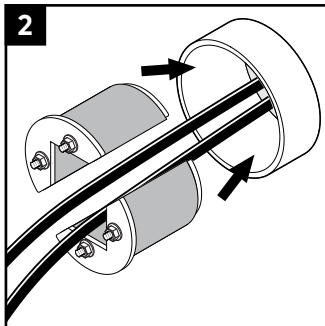
To be installed in

- Welded sleeves
- Bolted sleeves
- Cast-in sleeves
- Core drilled holes

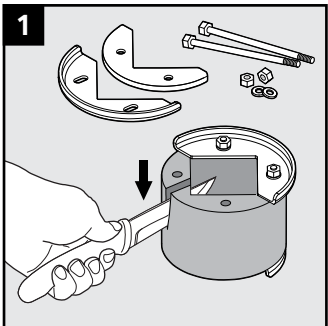
Pre-routed cables/pipes



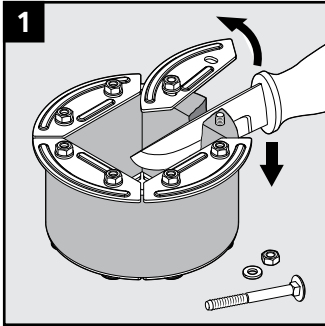
R 70 - 75: Disassemble the seal and orientate the fittings making the frame openable.



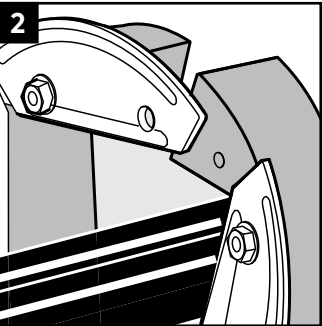
R 70 - 75: Install the frame around the cables.



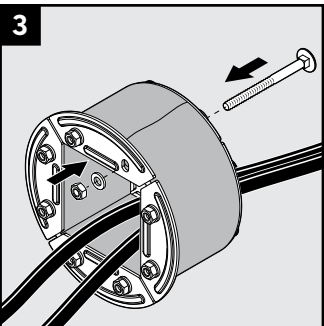
R 100: Remove fittings and cut the rubber between screw hole and corner.



R 125 - R 200: Remove fittings and cut the rubber between screw holes.

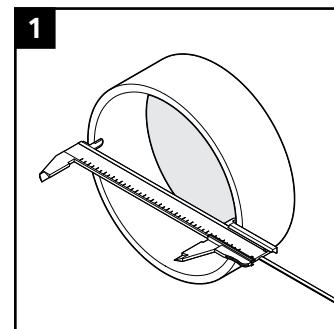


R 100 - R 200: Wrap the frame around the cables.

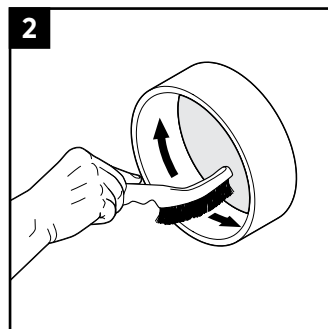


R 100 - R 200: Reassemble the frame around the cables.

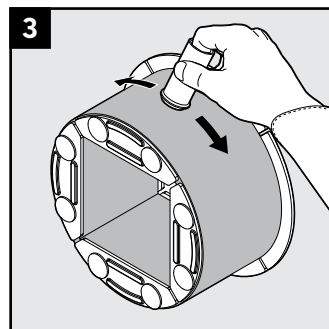
Installation R transit



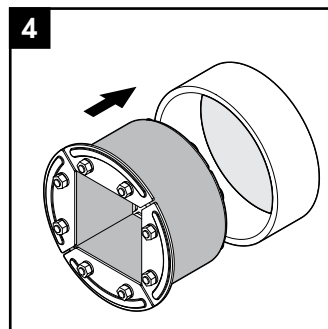
Make or verify an aperture.



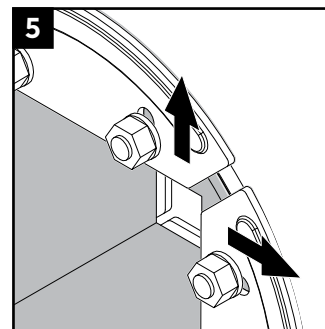
Clean the aperture.



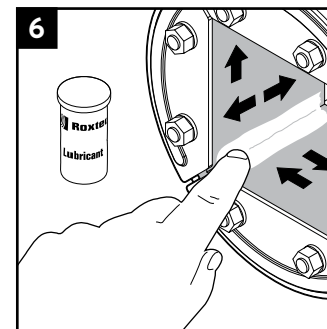
Lubricate the frame sparsely on the outside with Roxtec Lubricant.



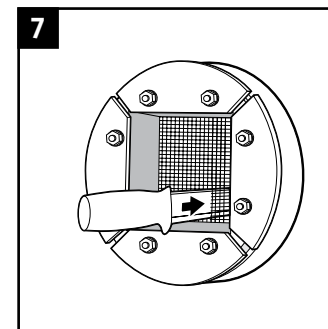
Insert the frame into the aperture.



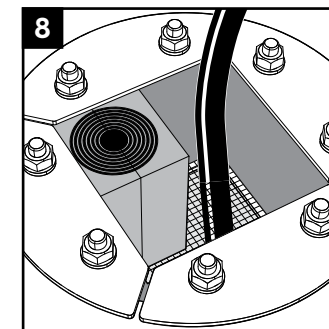
Push the front fittings to the sides.



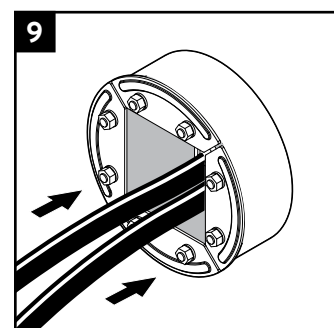
Lubricate the inside of the frame thoroughly, especially into the corners.



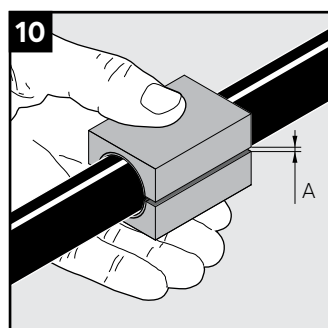
Perforate the net prior to routing cables/pipes if applicable.



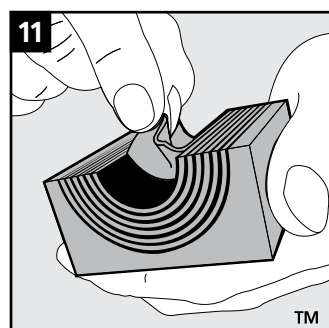
The net will simplify horizontal installations.



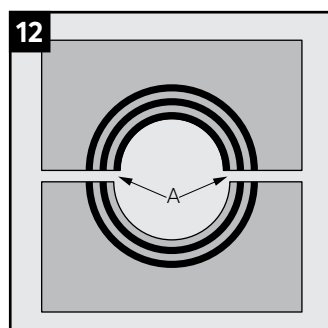
Route the cables/pipes through.



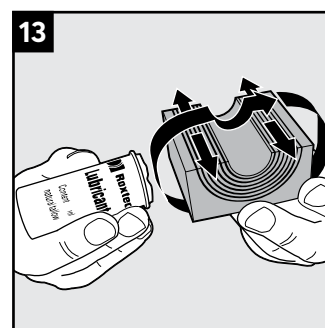
Achieve a 0.1-1.0 mm (A) gap between the two halves when held against the cable/pipe.



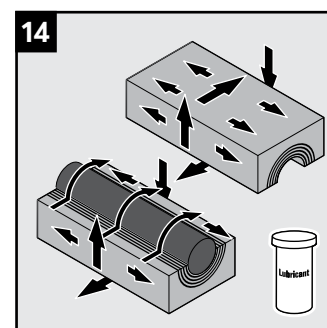
Adapt the modules by peeling off layers.



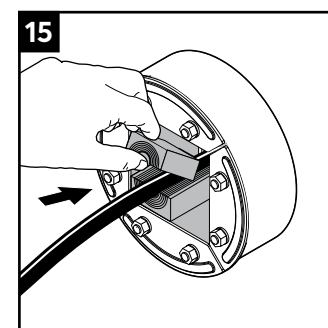
The number of layers may not differ (A) by more than one between the corresponding module halves.



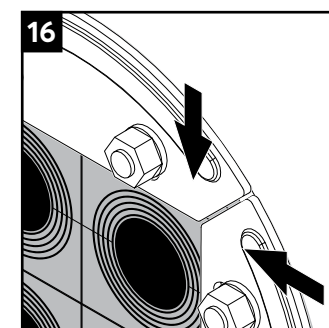
Lubricate all sealing surfaces on the modules.



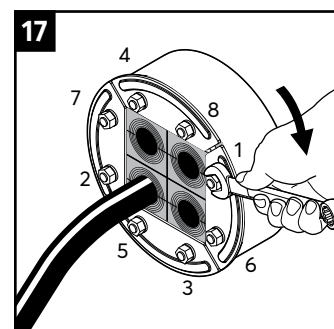
Lubricate the sealing surfaces of the spare modules. Do not remove the core.



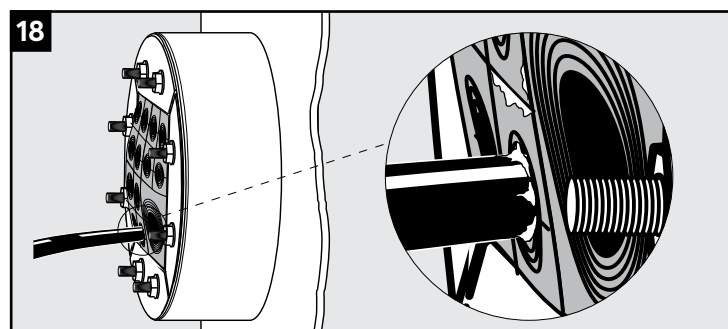
Insert the modules according to your packing plan. The cables/pipes shall be parallel to the sleeve.



Push the front fittings back towards the center.



Tighten the nuts crosswise in small steps.



Rubber surfaces bulging and protruding excess lubricant indicate a finalized transit.



Check additional documentation, if applicable.

Note

- For optimum reliability, wait 24 hours or longer after installation before exposing the cables/pipes to strain or pressure.
- To be used with: RM modules.
- Cables/pipes shall be parallel to the sleeve/aperture.
- Cable/pipe with a considerable weight needs to be supported to prevent damage or subsidence to the seal.
- Approvals or certificates may include amendments or limitations related to this application.
- The latest version of this and related documents are found at roxtec.com.

Disclaimer

"The Roxtec cable entry sealing system ("the Roxtec system") is a modular-based system of sealing products consisting of different components. Each and every one of the components is necessary for the best performance of the Roxtec system. The Roxtec system has been certified to resist a number of different hazards. Any such certification, and the ability of the Roxtec system to resist such hazards, is dependent on all components that are installed as a part of the Roxtec system. Thus, the certification is not valid and does not apply unless all components installed as part of the Roxtec system are manufactured by or under license from Roxtec ("authorized manufacturer"). Roxtec gives no performance guarantee with respect to the Roxtec system, unless (i) all components installed as part of the Roxtec system are manufactured by an authorized manufacturer and (ii) the purchaser is in compliance with (a), and (b), below.

(a) During storage, the Roxtec system or part thereof, shall be kept indoors in its original packaging at room temperature.

(b) Installation shall be carried out in accordance with Roxtec installation instructions in effect from time to time.

The product information provided by Roxtec does not release the purchaser of the Roxtec system, or part thereof, from the obligation to independently determine the suitability of the products for the intended process, installation and/or use.

Roxtec gives no guarantee for the Roxtec system or any part thereof and assumes no liability for any loss or damage whatsoever, whether direct, indirect, consequential, loss of profit or otherwise, occurred or caused by the Roxtec systems or installations containing components not manufactured by an authorized manufacturer and/or occurred or caused by the use of the Roxtec system in a manner or for an application other than for which the Roxtec system was designed or intended.

Roxtec expressly excludes any implied warranties of merchantability and fitness for a particular purpose and all other express or implied representations and warranties provided by statute or common law. User determines suitability of the Roxtec system for intended use and assumes all risk and liability in connection therewith. In no event shall Roxtec be liable for indirect, consequential, punitive, special, exemplary or incidental damages or losses."



Roxtec International AB
Box 540, 371 23 Karlskrona, SWEDEN
+46 455 36 67 00, info@roxtec.com
www.roxtec.com