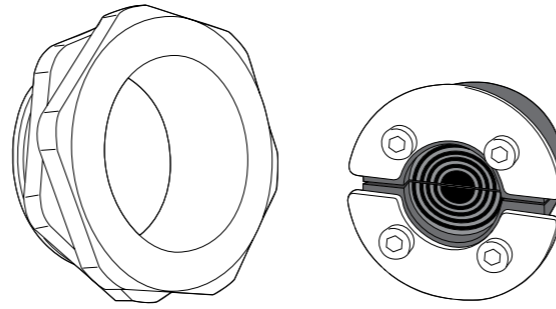
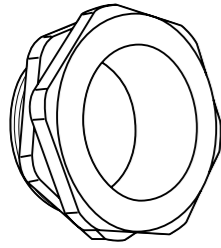


Installation instructions

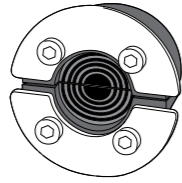
Roxtec C RS T seal



Components



Roxtec C RS T sleeve



Roxtec C RS T seal



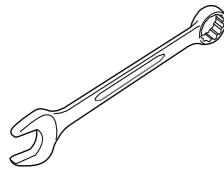
Roxtec Lubricant

Technical data

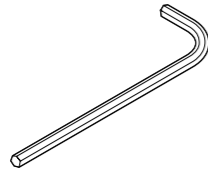
The amount of torque needed to compress the seal depends on several things, e.g cable or pipe size, amount of used lubricant, aperture size or material in the cable sheath, etc.

Name	For cable/pipe Ø (mm)	Torque (Nm)	Tool size (mm)
CRST 25	3.6 – 12	~ 1	2.5
CRST 31	4 – 17	~ 1	2.5
CRST 43	4 – 23	~ 4	4
CRST 50	8 – 30	~ 4	4

Tools



Spanner
(not included)



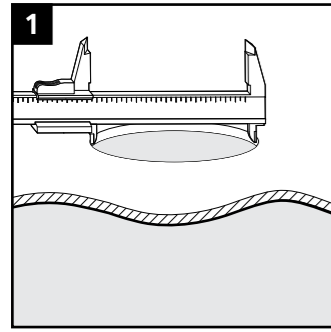
Allen key
(not included)

Aperture dimensions and structure thickness

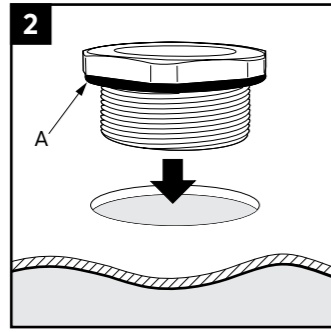


Scan QR code or visit roxtec.com for additional information such as information drawings, videos, ratings and certificates.

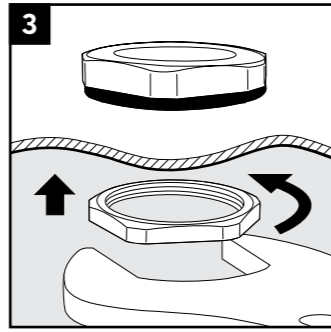
Installation



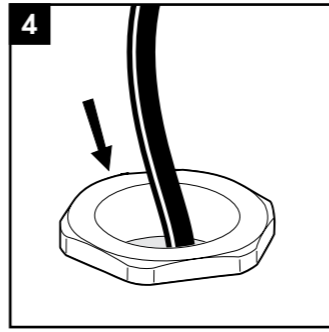
1 Make or verify an aperture.



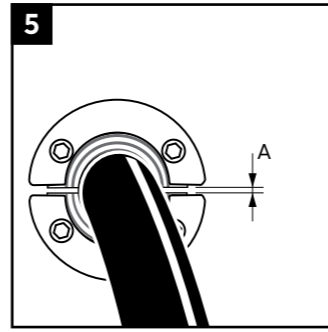
2 Make sure the rubber gasket (A) is in place.



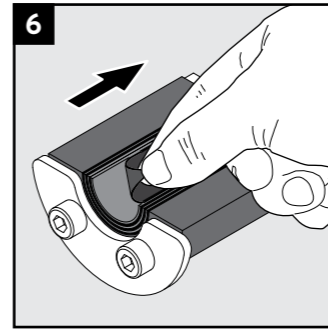
3 Attach and tighten the nut to 20-30 Nm.



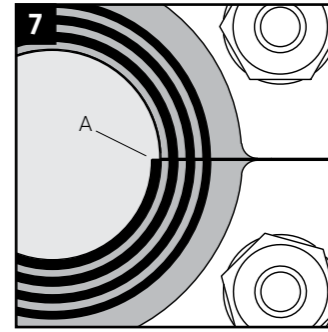
4 Pull the cable/pipe straight and centered through the aperture.



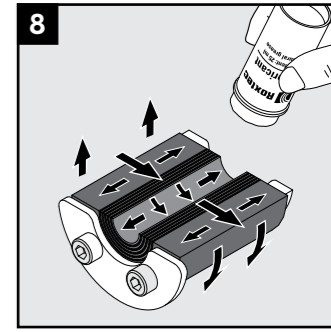
5 Achieve a 0-1.0 mm gap (A) between the two halves when held against the cable/pipe.



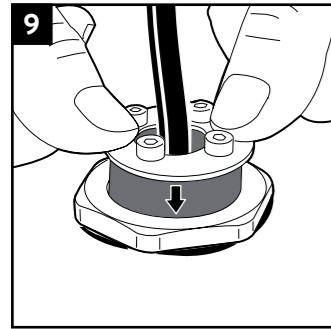
6 Adapt the seal by peeling off layers.



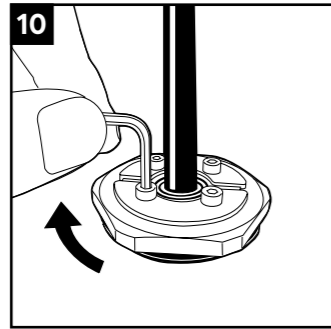
7 The number of layers may not differ (A) by more than one between the corresponding seal halves.



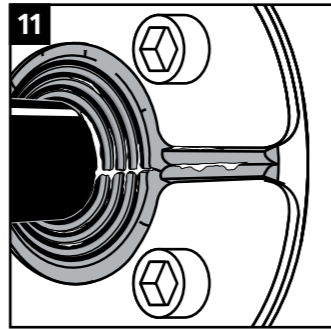
8 Lubricate the inside and the outside sealing surfaces with Rextec Lubricant.



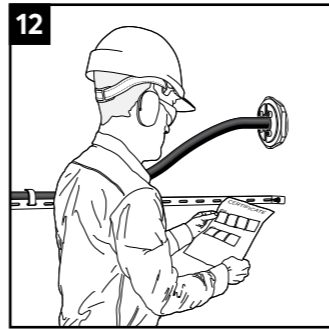
9 Insert the halves into the sleeve.



10 Using a suitable Allen key, tighten the bolts crosswise in small steps to the specified torque according to the table.

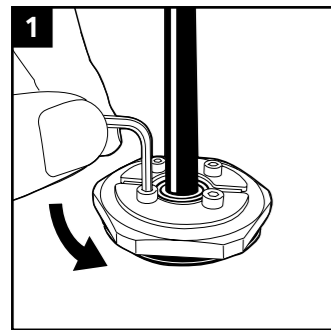


11 Bulging rubber and visible protruding lubricant indicate a tight seal.

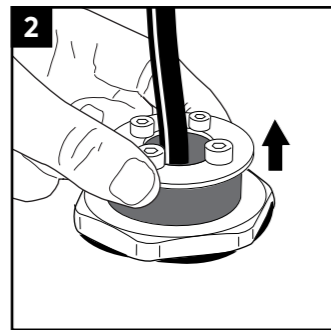


12 Check additional documentation, if applicable.

Disassembly



1 Untighten the screws crosswise.



2 Remove the seal.

Note

- For optimum reliability, wait 24 hours or longer after installation before exposing the cables/pipes to strain or pressure.
- Cables/pipes shall be parallel to the sleeve/aperture.
- Cable/pipe with a considerable weight needs to be supported to prevent damage or subsidence to the seal.
- Approvals or certificates may include amendments or limitations related to this application.
- A seal with core is spare capacity.
- The latest version of this and related documents are found at roxtec.com.

Disclaimer

"The Rextec cable and pipe entry sealing system ('the Rextec system') is a modular-based system of sealing products consisting of different components. Each and every one of the components is necessary for the best performance of the Rextec system. The Rextec system has been certified to resist a number of different hazards. Any such certification, and the ability of the Rextec system to resist such hazards, is dependent on all components that are installed as a part of the Rextec system. Thus, the certification is not valid and does not apply unless all components installed as part of the Rextec system are manufactured by or under license from Rextec (authorized manufacturer). Rextec gives no performance guarantee with respect to the Rextec system, unless (I) all components installed as part of the Rextec system are manufactured by an authorized manufacturer and (II) the purchaser is in compliance with (a), and (b), below.

(a) During storage, the Rextec system or part thereof, shall be kept indoors in its original packaging at room temperature.

(b) Installation shall be carried out in accordance with Rextec installation instructions in effect from time to time.

The product information provided by Rextec does not release the purchaser of the Rextec system, or part thereof, from the obligation to independently

determine the suitability of the products for the intended process, installation and/or use.

Rextec gives no guarantee for the Rextec system or any part thereof and assumes no liability for any loss or damage whatsoever, whether direct, indirect, consequential, loss of profit or otherwise, occurred or caused by the Rextec systems or installations containing components not manufactured by an authorized manufacturer and/or occurred or caused by the use of the Rextec system in a manner or for an application other than for which the Rextec system was designed or intended.

Rextec expressly excludes any implied warranties of merchantability and fitness for a particular purpose and all other express or implied representations and warranties provided by statute or common law. User determines suitability of the Rextec system for intended use and assumes all risk and liability in connection therewith. In no event shall Rextec be liable for indirect, consequential, punitive, special, exemplary or incidental damages or losses.

The Rextec products are offered and sold in accordance with the conditions of the Rextec General Terms of Sales. The latest version of the Rextec General Terms of Sales can be found and downloaded from roxtec.com/general-terms-of-sales.



Roxtec International AB
Box 540, 371 23 Karlskrona, SWEDEN
+46 455 36 67 00, info@roxtec.com
www.roxtec.com