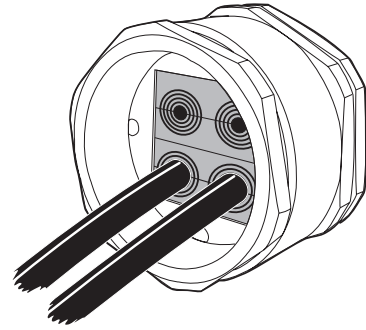


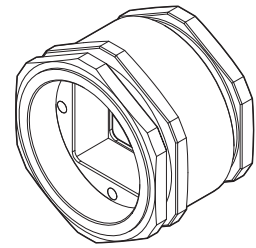
Installation instructions

Roxtec RG M63

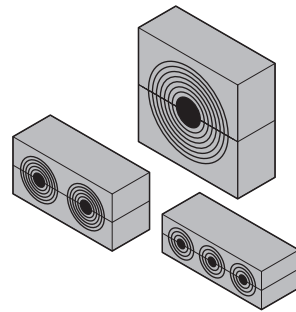
Roxtec RG M63 AISI 316



Components



Roxtec RG M63 housing

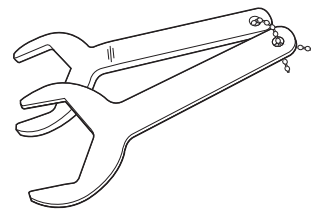


Roxtec GM modules

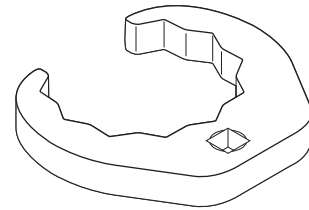


Roxtec Lubricant

Tools

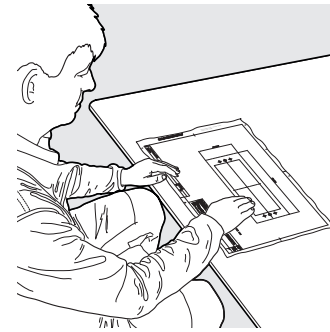


Spanners 64 and 68 mm (not included).

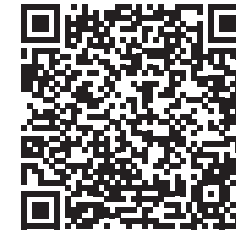


Crowfoot 64 mm (not included).

Additional information



Additional information such as drawings, aperture, videos, ratings and certificates are available.



Scan QR code or visit roxtec.com for additional information.

Note

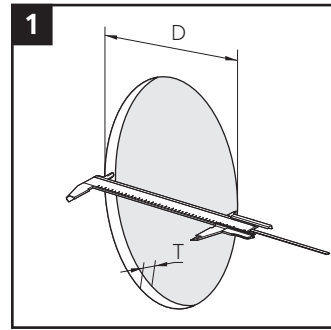
- For optimum reliability, wait 24 hours or longer after installation before exposing the cables/pipes to strain or pressure.
- To be used with: GM components.
- Cables passing through the seal shall be perpendicular to the visible module surface.
- Approvals or certificates may include amendments or limitations related to this application.
- The latest version of this and related documents are found at roxtec.com.

Technical data

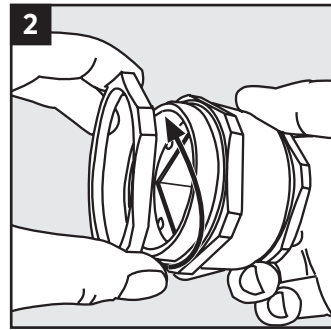
For modules.

Name	For cable/pipe Ø (mm)
GM 13.3w40	3.5 – 10.5
GM 20w40	3.5 – 16.5
GM 40 10–32	9.5 – 32.5

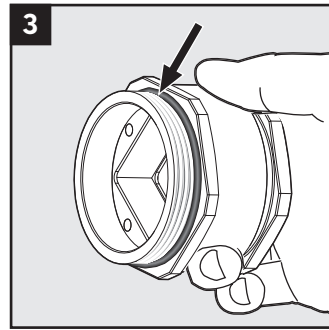
Installation



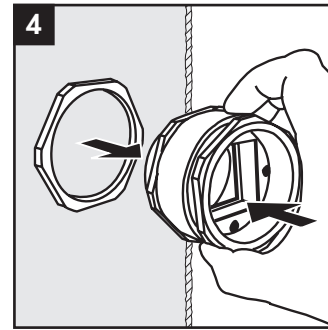
1 Make or verify a round aperture (D) \varnothing 63-64 mm. Max. wall thickness (T) = 4 mm.



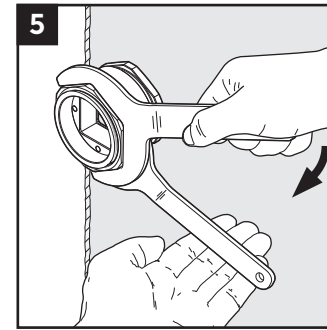
2 Separate the lock nut from the gland housing.



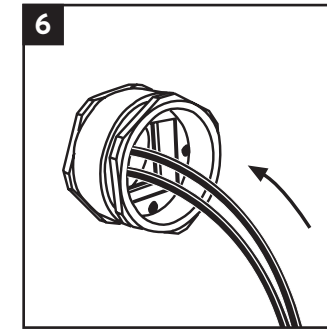
3 Check that the O-ring is in the right place.



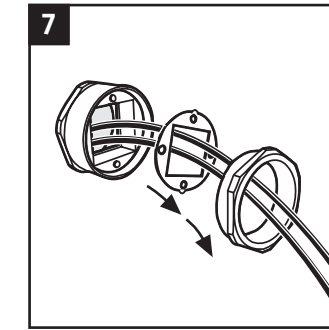
4 Insert the housing into the aperture.



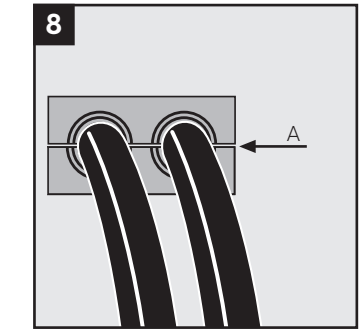
5 Tighten the nut to approx. 30 Nm. Use a counterhold to prevent the housing from rotating.



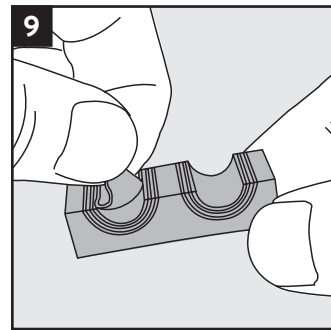
6 Pull all the cables through.



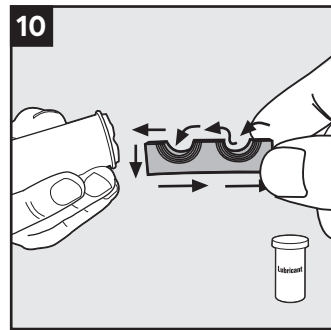
7 Remove the compression screw and the front washer.



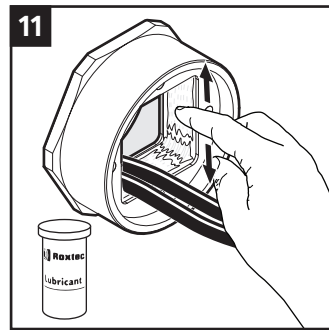
8 Achieve a 0.1-1.0 mm gap (A) between the two module halves.



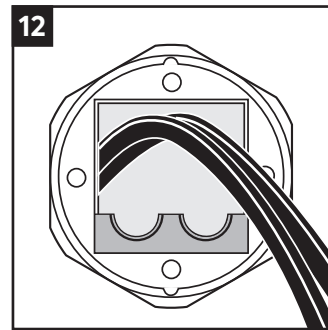
9 Adapt modules by peeling off layers. The halves may not differ by more than one layer.



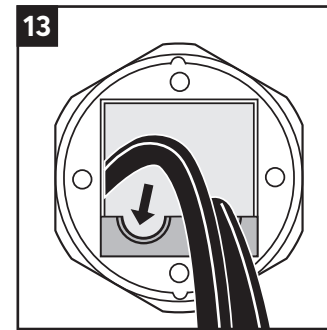
10 Lubricate all sealing surfaces of the modules thoroughly with Roxel Lubricant.



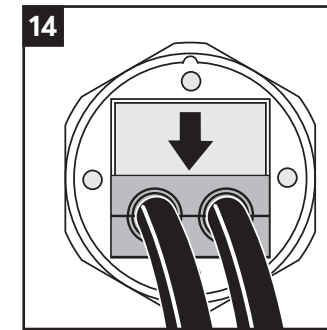
11 Lubricate the compression rubber. Especially in the corners.



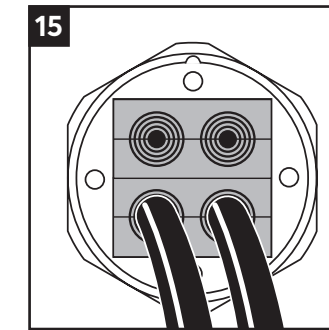
12 Place a module half.



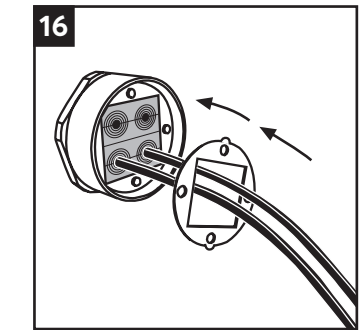
13 Place the cables in the module half.



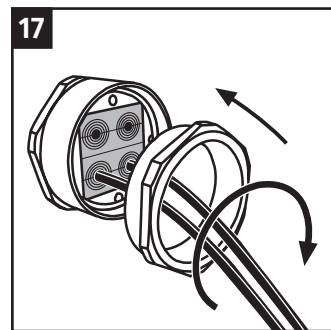
14 Place the corresponding module half.



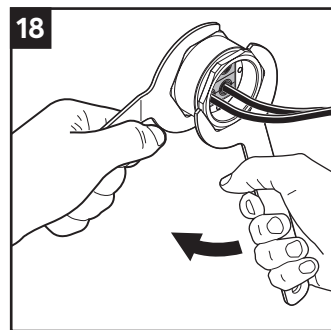
15 Continue to fill up the transit according to your packing plan.



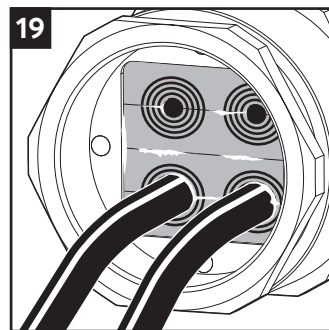
16 Insert and orientate the front washer in the housing using the locating tabs.



17 Insert the compression screw.



18 Tighten to approx. 35 Nm.

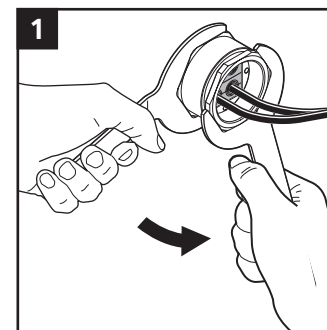


19 Excess lubricant shall be visible after compression.

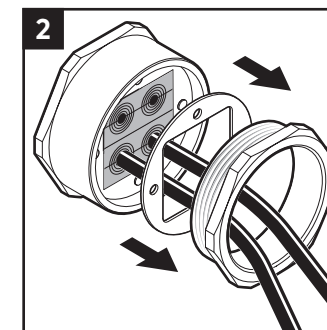


20 Check additional documentation, if applicable.

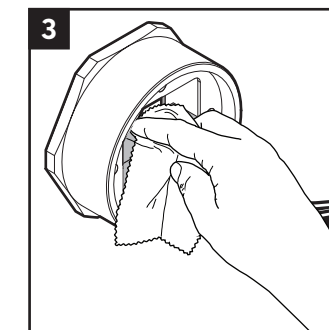
Disassembly and reinstallation



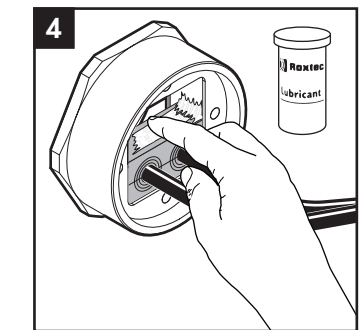
1 Untighten the compression screw.



2 Remove the compression screw and the front washer.



3 Clean the exposed surfaces.



4 Lubricate the exposed surfaces and continue the reinstallation.

Disclaimer

The Roxel cable and pipe entry sealing system (the Roxel system) is a modular-based system of sealing products consisting of different components. Each and every one of the components is necessary for the best performance of the Roxel system. The Roxel system has been certified to resist a number of different hazards. Any such certification, and the ability of the Roxel system to resist such hazards, is dependent on all components that are installed as a part of the Roxel system. Thus, the certification is not valid and does not apply unless all components installed as part of the Roxel system are manufactured by or under license from Roxel (authorized manufacturer). Roxel gives no performance guarantee with respect to the Roxel system, unless (I) all components installed as part of the Roxel system are manufactured by an authorized manufacturer and (II) the purchaser is in compliance with (a), and (b), below.

(a) During storage, the Roxel system or part thereof, shall be kept indoors in its original packaging at room temperature.

(b) Installation shall be carried out in accordance with Roxel installation instructions in effect from time to time.

The product information provided by Roxel does not release the purchaser of the Roxel system, or part thereof, from the obligation to independently

determine the suitability of the products for the intended process, installation and/or use.

Roxel gives no guarantee for the Roxel system or any part thereof and assumes no liability for any loss or damage whatsoever, whether direct, indirect, consequential, loss of profit or otherwise, occurred or caused by the Roxel systems or installations containing components not manufactured by an authorized manufacturer and/or occurred or caused by the use of the Roxel system in a manner or for an application other than for which the Roxel system was designed or intended.

Roxel expressly excludes any implied warranties of merchantability and fitness for a particular purpose and all other express or implied representations and warranties provided by statute or common law. User determines suitability of the Roxel system for intended use and assumes all risk and liability in connection therewith. In no event shall Roxel be liable for indirect, consequential, punitive, special, exemplary or incidental damages or losses.

The Roxel products are offered and sold in accordance with the conditions of the Roxel General Terms of Sales. The latest version of the Roxel General Terms of Sales can be found and downloaded from roxtec.com/general-terms-of-sales.



Roxel International AB
Box 540, 371 23 Karlskrona, SWEDEN
+46 455 36 67 00, info@roxtec.com
www.roxtec.com