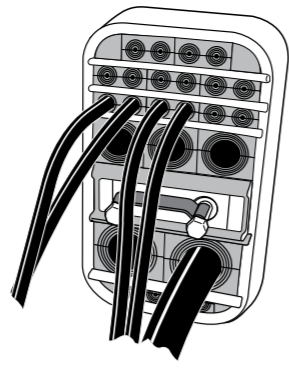
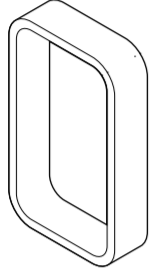


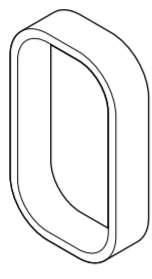
Installation instructions Roxtec SRC transits



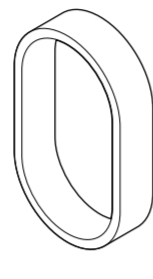
Components



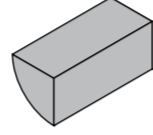
SRC r20 frame



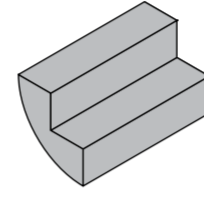
SRC r40 frame



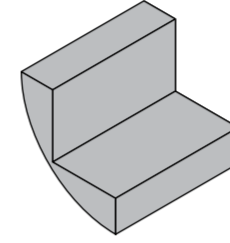
SRC r60 frame



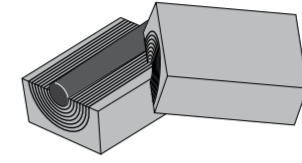
RC 20 module
4 pcs



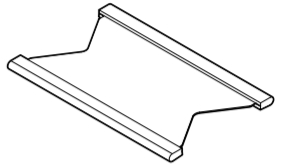
RC 40 module
4 pcs



RC 60 module
4 pcs



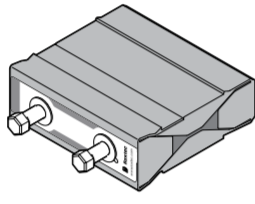
Roxtec RM sealing modules



Stayplates

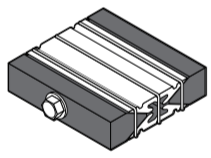


Roxtec Lubricant

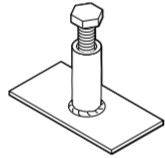


Roxtec Wedge

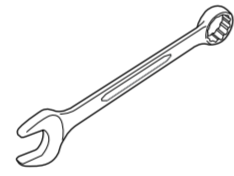
Tools



Roxtec pre-compression tool
(not included)

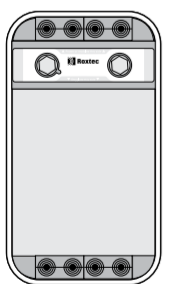


Roxtec pre-compression tool
(not included)



Spanner
(not included)

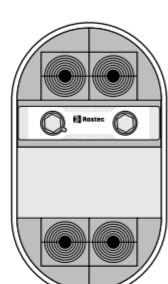
Configuration of RC modules



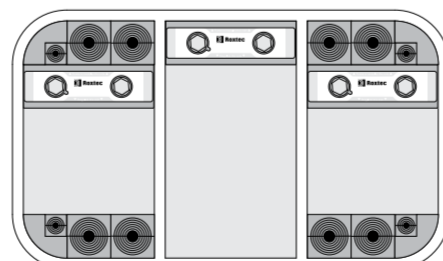
For frames with 20 mm inner radius, place RM 20w40 or RM 20 modules between the RC modules.



For frames with 40 mm inner radius, place one RM 40 and two RM 20 modules between the RC modules.



For frames with 60 mm inner radius, place two RM 40 modules between the RC modules.

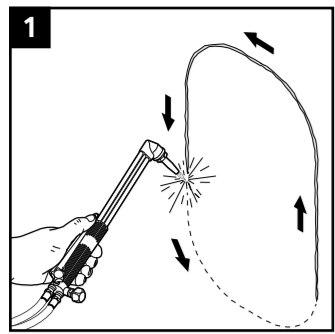


Example of available packing space in combination frames.

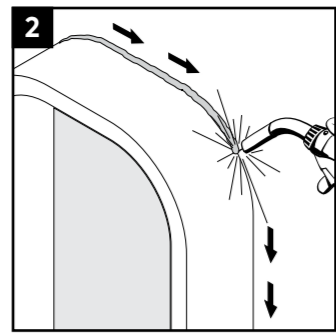
Note

- For optimum reliability, wait 24 hours or longer after installation before exposing the cables/pipes to strain or pressure.
- To be used with RM components.
- The wedge can be placed anywhere in the frame.
- Cable/pipe with a considerable weight needs to be supported to prevent damage or subsidence to the seal.
- Partially installed openings shall be compressed if left unattended.
- Approvals or certificates may include amendments or limitations related to this application.
- The latest version of this and related documents are found at roxtec.com.

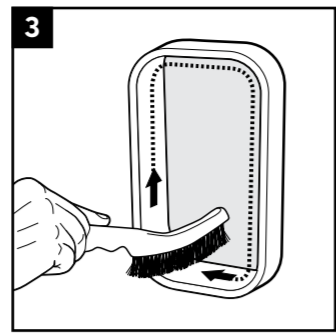
Installation



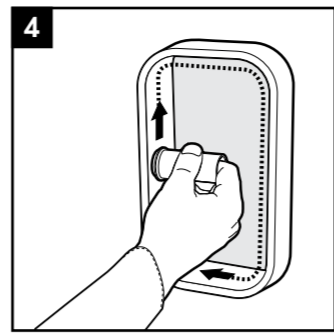
1 Make or verify an aperture. Roxeltec guidelines are available.



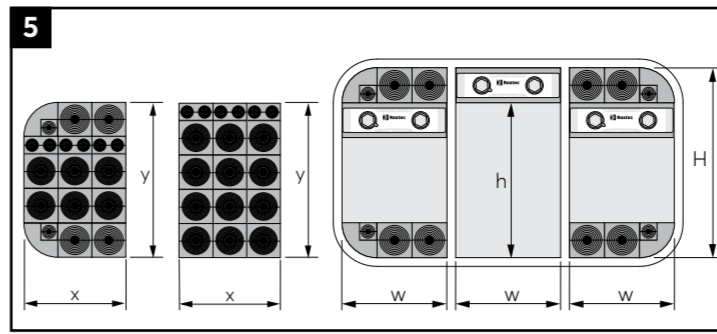
2 Fasten the frame to the structure. Roxeltec welding guidelines are available.



3 Clean the frame.



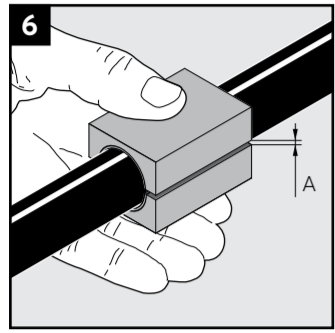
4 Lubricate the frame with Roxeltec Lubricant.



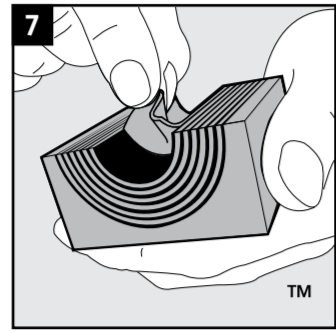
5 Consider your packing plan when installing modules. The total width (x) and total height (y) of the installed modules shall correspond to the packing width (w) and packing height (h) of the frame.

S	H	w	h
1	101	60	60
2	101	120	60
3	160	60	120
4	160	120	120
5	218	60	180
6	218	120	180
7	278	60	240
8	278	120	240

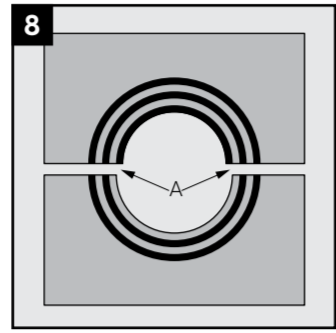
S = Frame size
H = Frame height
w = Packing width
h = Packing height



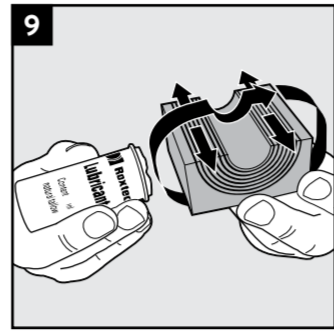
6 Achieve a 0.1-1.0 mm (A) gap between the two halves when held against the cable/pipe.



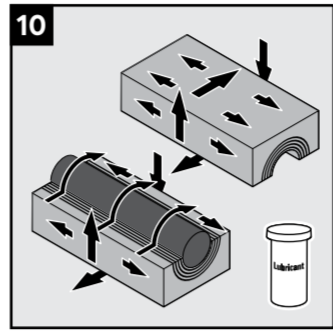
7 Adapt the modules by peeling off layers.



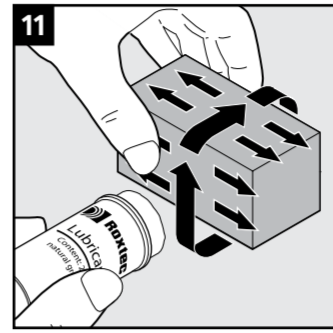
8 The number of layers may not differ (A) by more than one between the corresponding module halves.



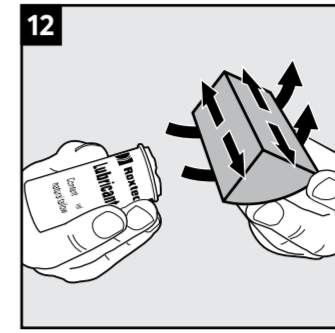
9 Lubricate all sealing surfaces on the modules.



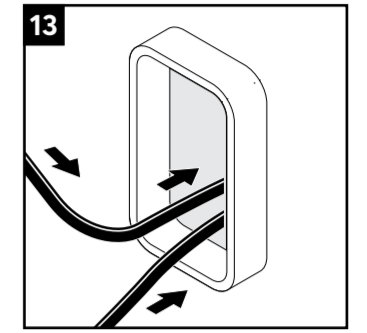
10 Lubricate the sealing surfaces of the spare modules. Do not remove the core.



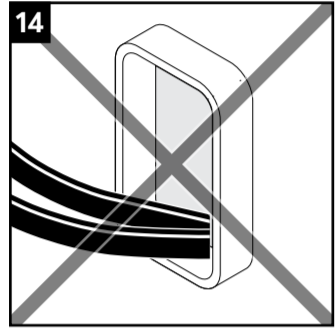
11 Lubricate the sealing surfaces of the solid modules.



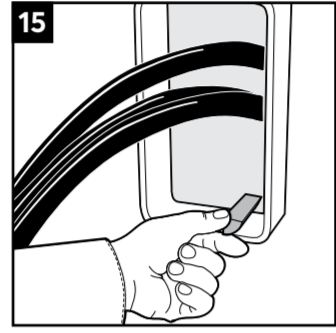
12 Lubricate the RC modules.



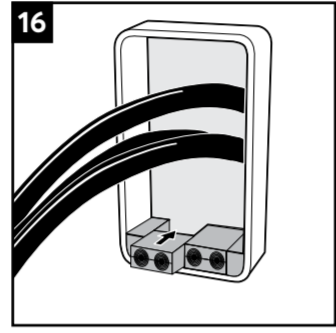
13 Pull the cables/pipes through. The cable/pipe shall go straight through the frame.



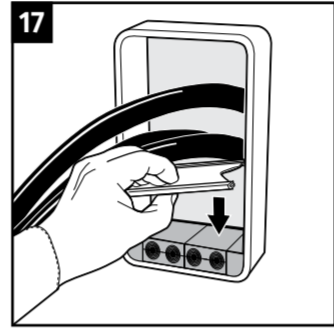
14 Not acceptable.



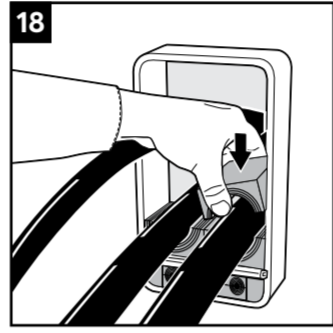
15 Insert RC modules in the bottom corners.



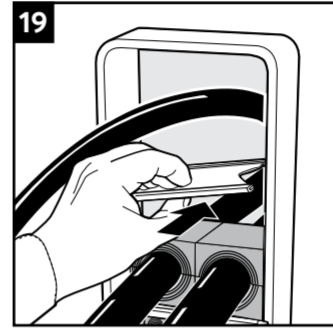
16 Insert the specified modules between the RC modules.



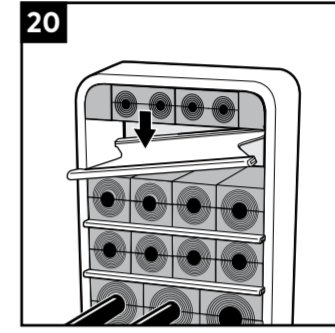
17 Insert a stayplate.



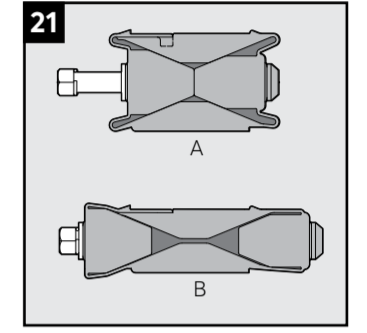
18 Continue to fill up the packing space of the frame, starting with the largest cables if possible.



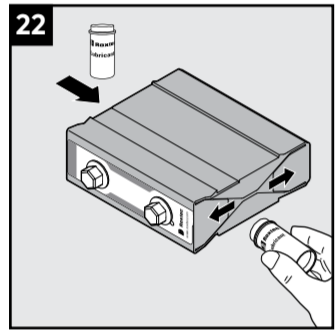
19 Insert a stayplate on top of every finished row of modules.



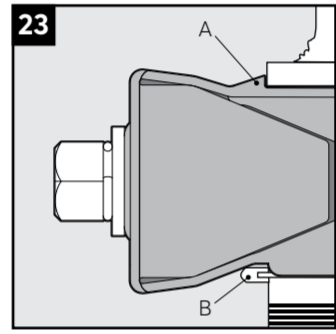
20 Insert the RC modules in the top corners and insert the specified modules. Install a stayplate.



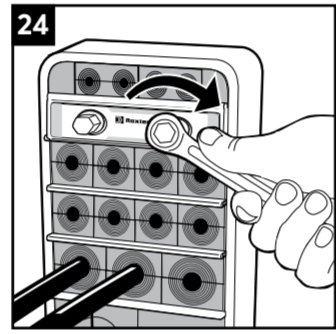
21 Ensure that the wedge is fully uncompressed (B) by untightening the screws.



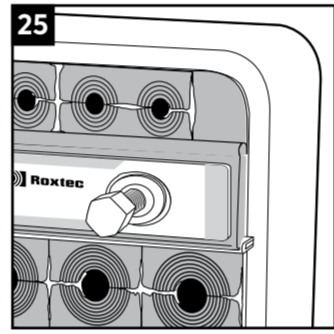
22 Lubricate the short sides of the wedge.



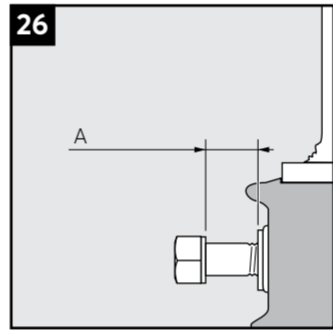
23 Orientate the wedge so the face marked "Stayplate this side" faces a stayplate (B). Insert the wedge to the stop flange (A). Ensure that the wedge is accommodated and secured by the stayplate (B).



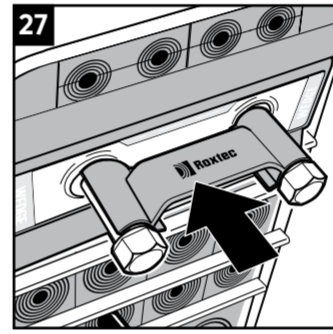
24 Tighten the screws alternately until full mechanical stop, approx 20 full revolutions per screw. Do not exceed 20 Nm.



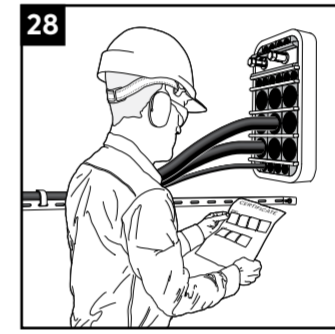
25 Excess lubricant is a sign of good compression.



26 25 mm (A) of the screws shall be exposed.

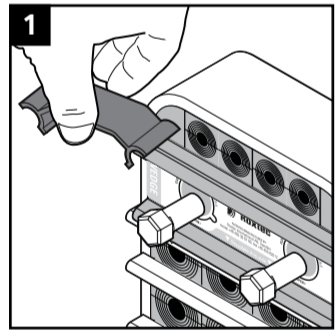


27 Attach the wedge clip to the wedge screws to complete the installation.

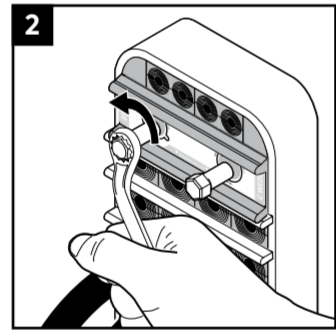


28 Make a final check! Different approvals or certificates may include amendments or limitations related to this application.

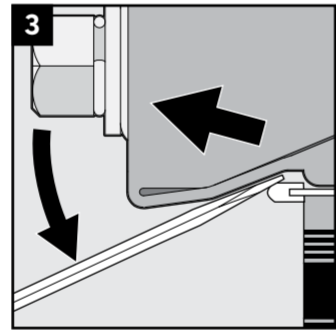
Disassembly



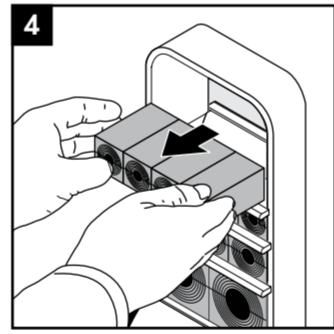
1 Remove the wedge clip from the wedge.



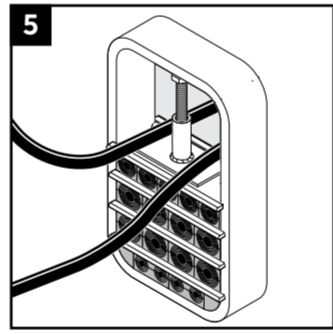
2 Loosen the screws alternately to full stop. Do not exceed 20 Nm.



3 Insert a flat tool between the wedge and the stayplate to lift the wedge over the stop flange. Roxeltec special tools are available.

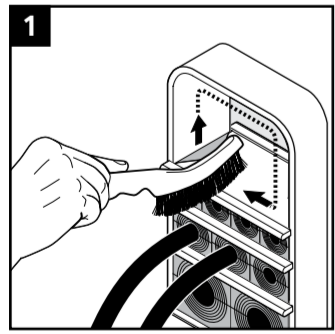


4 Remove the modules required. Keep the rows sorted until it is time to reinstall the transit. If a module is damaged or replaced, all modules in that row must be replaced.

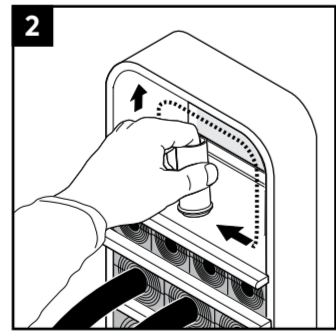


5 Partially installed openings shall be compressed if left unattended. Excess lubricant is a sign of good compression.

Reinstallation



1 Make sure that the inside surfaces of the exposed packing space are free from dirt or dust.



2 Lubricate the inside surfaces all around with Roxeltec Lubricant. Continue the reinstallation.

Disclaimer

The Roxeltec cable entry sealing system ("the Roxeltec system") is a modular-based system of sealing products consisting of different components. Each and every one of the components is necessary for the best performance of the Roxeltec system. The Roxeltec system has been certified to resist a number of different hazards. Any such certification, and the ability of the Roxeltec system to resist such hazards, is dependent on all components that are installed as a part of the Roxeltec system. Thus, the certification is not valid and does not apply unless all components installed as part of the Roxeltec system are manufactured by or under license from Roxeltec ("authorized manufacturer"). Roxeltec gives no performance guarantee with respect to the Roxeltec system, unless (i) all components installed as part of the Roxeltec system are manufactured by an authorized manufacturer and (ii) the purchaser is in compliance with (a) and (b) below.
(a) During storage, the Roxeltec system or part thereof, shall be kept indoors in its original packaging at room temperature.
(b) Installation shall be carried out in accordance with Roxeltec installation instructions in effect from time to time.

The product information provided by Roxeltec does not release the purchaser of the Roxeltec system, or part thereof, from the obligation to independently determine the suitability of the products for the intended process, installation and/or use.
Roxeltec gives no guarantee for the Roxeltec system or any part thereof and assumes no liability for any loss or damage whatsoever, whether direct, indirect, consequential, loss of profit or otherwise, occurred or caused by the Roxeltec systems or installations containing components not manufactured by an authorized manufacturer and/or occurred or caused by the use of the Roxeltec system in a manner or for an application other than for which the Roxeltec system was designed or intended.
Roxeltec expressly excludes any implied warranties of merchantability and fitness for a particular purpose and all other express or implied representations and warranties provided by statute or common law. User determines suitability of the Roxeltec system for intended use and assumes all risk and liability in connection therewith. In no event shall Roxeltec be liable for indirect, consequential, punitive, special, exemplary or incidental damages or losses.



Roxeltec International AB
Box 540, 371 23 Karlskrona, SWEDEN
+46 455 36 67 00, info@roxeltec.com
www.roxeltec.com